



Chipsmall Limited consists of a professional team with an average of over 10 year of expertise in the distribution of electronic components. Based in Hongkong, we have already established firm and mutual-benefit business relationships with customers from,Europe,America and south Asia,supplying obsolete and hard-to-find components to meet their specific needs.

With the principle of “Quality Parts,Customers Priority,Honest Operation,and Considerate Service”,our business mainly focus on the distribution of electronic components. Line cards we deal with include Microchip,ALPS,ROHM,Xilinx,Pulse,ON,Everlight and Freescale. Main products comprise IC,Modules,Potentiometer,IC Socket,Relay,Connector.Our parts cover such applications as commercial,industrial, and automotives areas.

We are looking forward to setting up business relationship with you and hope to provide you with the best service and solution. Let us make a better world for our industry!



Contact us

Tel: +86-755-8981 8866 Fax: +86-755-8427 6832

Email & Skype: info@chipsmall.com Web: www.chipsmall.com

Address: A1208, Overseas Decoration Building, #122 Zhenhua RD., Futian, Shenzhen, China

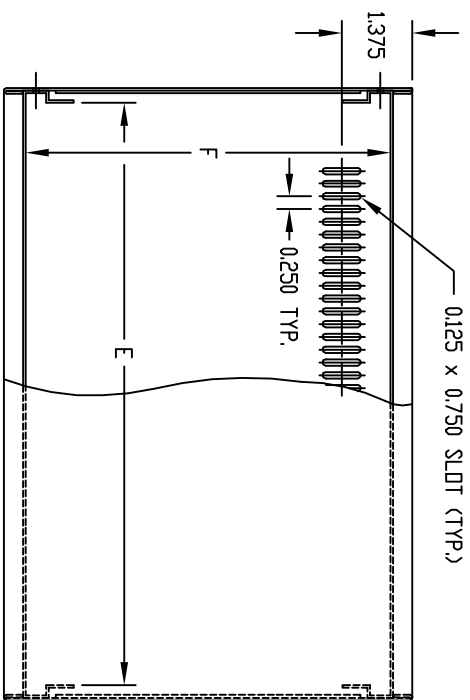


PART
NAME

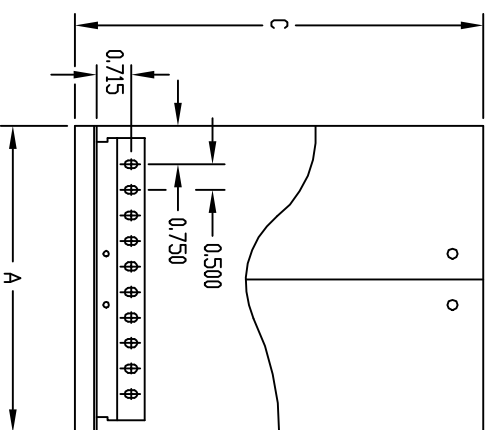
CHAMPION SERIES

PART
No.

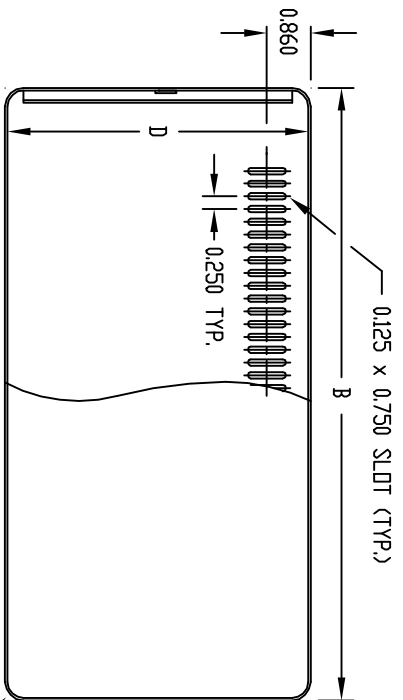
CS-11202 TD CS-11216



TOP VIEW



SIDE VIEW



FRONT VIEW

MATERIAL: 0050 THK. ALUMINUM
 QTY. (4) #F-3581 RUBBER FEET
 QTY. (8) #6 x 1/4 TRUSS HEAD
 TAPPING SCREW.
 FINISH: TWO COLOR COMBINATIONS
 SAND TEXTURED OR BLACK
 TEXTURED TOP & BOTTOM, BOTH
 WITH SMOOTH WHITE FRONT &
 REAR PANELS.

0.312 R. (INSIDE)

PART No.	HEIGHT A	WIDTH B	DEPTH C	CLEAR INSIDE HEIGHT D	CLEAR INSIDE WIDTH E	CLEAR INSIDE DEPTH F
CS-11202	4.000	6.000	6.000	3.875	5.375	5.141
CS-11204	4.000	9.000	8.000	3.875	8.375	7.141
CS-11206	4.000	12.000	8.000	3.875	11.375	7.141
CS-11208	6.000	9.000	8.000	5.875	8.375	7.141
CS-11210	6.000	12.000	8.000	5.875	11.375	7.141
CS-11212	6.000	12.000	10.000	5.875	11.375	9.141
CS-11214	8.000	9.000	8.000	7.875	8.375	7.141
CS-11216	8.000	12.000	10.000	7.875	11.375	9.141