



Chipsmall Limited consists of a professional team with an average of over 10 year of expertise in the distribution of electronic components. Based in Hongkong, we have already established firm and mutual-benefit business relationships with customers from,Europe,America and south Asia,supplying obsolete and hard-to-find components to meet their specific needs.

With the principle of “Quality Parts,Customers Priority,Honest Operation,and Considerate Service”,our business mainly focus on the distribution of electronic components. Line cards we deal with include Microchip,ALPS,ROHM,Xilinx,Pulse,ON,Everlight and Freescale. Main products comprise IC,Modules,Potentiometer,IC Socket,Relay,Connector.Our parts cover such applications as commercial,industrial, and automotives areas.

We are looking forward to setting up business relationship with you and hope to provide you with the best service and solution. Let us make a better world for our industry!



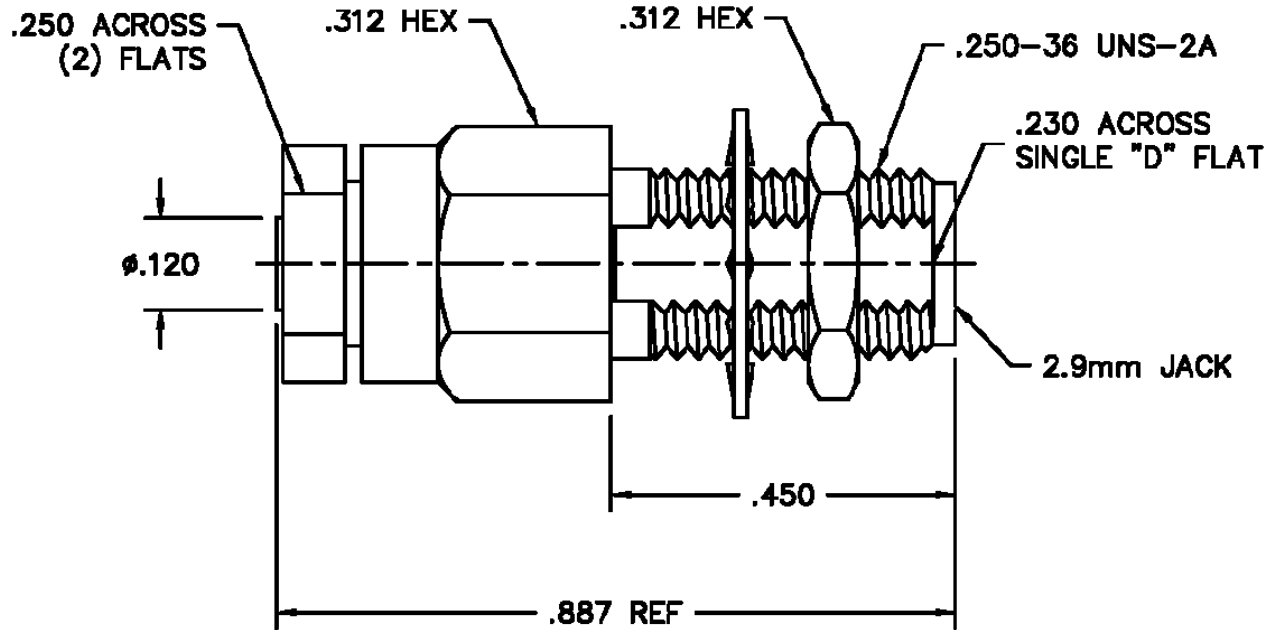
## Contact us

Tel: +86-755-8981 8866 Fax: +86-755-8427 6832

Email & Skype: info@chipsmall.com Web: www.chipsmall.com

Address: A1208, Overseas Decoration Building, #122 Zhenhua RD., Futian, Shenzhen, China





**NOTES:**

**1.0 Materials**

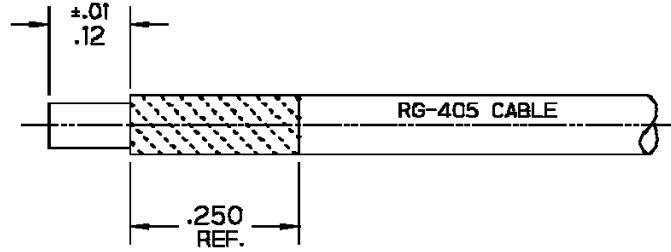
- 1.1 Contact: Heat Treated BeCu alloy per ASTM-B-196.
- 1.2 Body, Clamp Nut, and Jam Nut: 303 SST per ASTM-A-484 and ASTM-A-582.
- 1.3 Solder Ferrule: 360 Brass per ASTM-B16.
- 1.4 Lock Washer: 300 Series Stainless Steel.
- 1.5 O-Ring: Silicone per ZZ-R-765.

**2.0 Finishes**

- 2.1 Contact and Solder Ferrule: Gold Plate per ASTM-B-488 over nickel per QQ-N-290.
- 2.2 Body, Clamp Nut, Jam Nut, and Lock Washer: Passivated per ASTM-A-967-99.

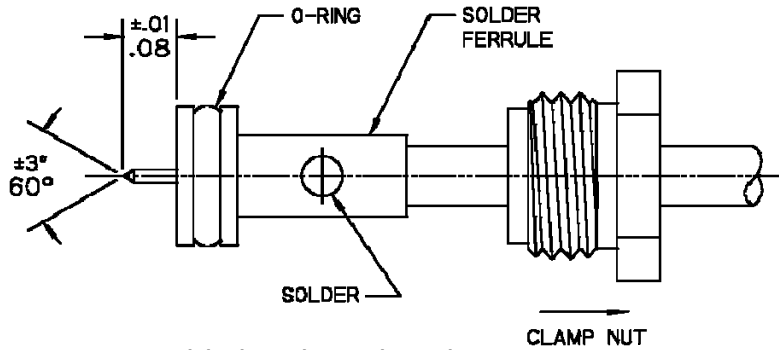
**Product Control:**

Crystek Part Number:	CS-FFB-MSR	Release Date:	15-Aug-11
Revision Level:	B	Responsible:	K. Piotrowicz



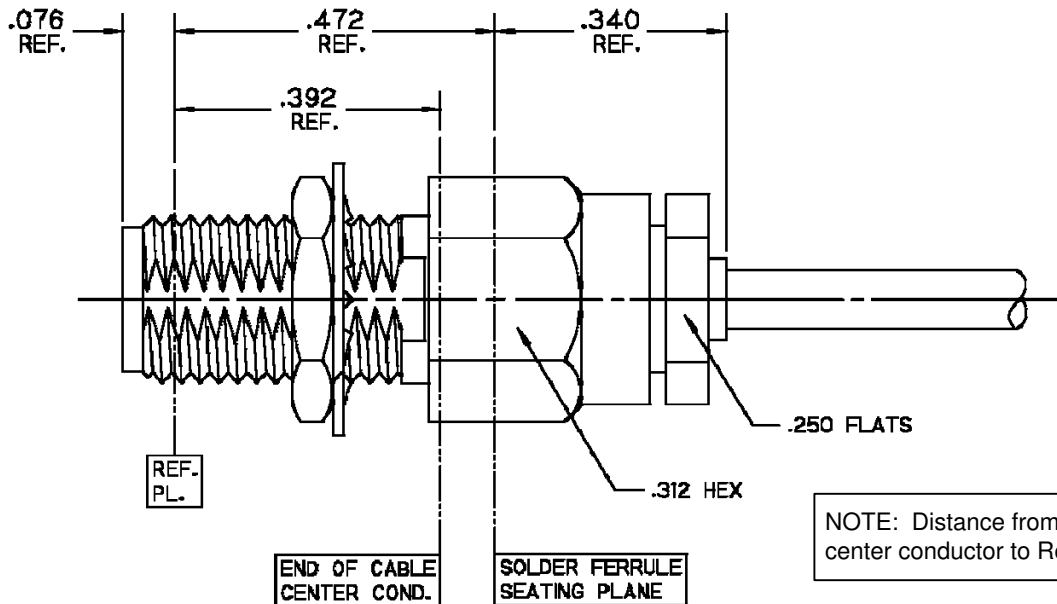
- 1.1 Trim cable to expose dielectric core as shown.  
 1.2 Pre-tin cable jacket to approximate dimension shown.

Step 1



- 2.1 Slide clamp nut onto cable in orientation shown.  
 2.2 Insert cable into solder ferrule until fully seated, then solder cable to ferrule where shown.  
 2.3 Trim cable dielectric flush with ferrule face (do not score center conductor), then point center conductor as shown.

Step 2



- 3.1 Insert cable sub-assembly into connector body until solder ferrule is seated and tighten clamp nut to 25-35 in. lbs.

Step 3

**Product Control:**

Crystek Part Number:	CS-FFB-MSR	Release Date:	15-Aug-11
Revision Level:	B	Responsible:	K. Piotrowicz

