



Chipsmall Limited consists of a professional team with an average of over 10 year of expertise in the distribution of electronic components. Based in Hongkong, we have already established firm and mutual-benefit business relationships with customers from,Europe,America and south Asia,supplying obsolete and hard-to-find components to meet their specific needs.

With the principle of “Quality Parts,Customers Priority,Honest Operation,and Considerate Service”,our business mainly focus on the distribution of electronic components. Line cards we deal with include Microchip,ALPS,ROHM,Xilinx,Pulse,ON,Everlight and Freescale. Main products comprise IC,Modules,Potentiometer,IC Socket,Relay,Connector.Our parts cover such applications as commercial,industrial, and automotives areas.

We are looking forward to setting up business relationship with you and hope to provide you with the best service and solution. Let us make a better world for our industry!



Contact us

Tel: +86-755-8981 8866 Fax: +86-755-8427 6832

Email & Skype: info@chipsmall.com Web: www.chipsmall.com

Address: A1208, Overseas Decoration Building, #122 Zhenhua RD., Futian, Shenzhen, China



Precision Low-voltage Amplifier; DC to 2kHz

Features

- Low Offset: 10 μ V Max
- Low Drift: 0.05 μ V/ $^{\circ}$ C Max
- Low Noise
 - 6nV/ $\sqrt{\text{Hz}}$ @ 0.5Hz
 - 0.1 to 10Hz = 125nVpp
 - 1/f corner @ 0.08Hz
- Open-loop Voltage Gain
 - 300dB Typical
 - 200dB Minimum
- Rail-to-rail Output Swing
- Slew Rate: 5V/ μ s

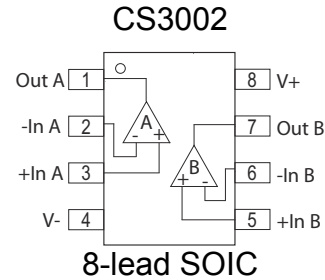
Applications

- Thermocouple/Thermopile Amplifiers
- Load Cell and Bridge Transducer Amplifiers
- Precision Instrumentation
- Battery-powered Systems

Description

The CS3002 dual amplifier is designed for precision amplification of low-level signals and is ideally suited for applications that require very high closed-loop gains. These amplifiers achieve excellent offset stability, super-high open-loop gain, and low noise over time and temperature. The devices also exhibit excellent CMRR and PSRR. The common mode input range includes the negative supply rail. The amplifiers operate with any total supply voltage from 2.7V to 6.7V ($\pm 1.35\text{V}$ to $\pm 3.35\text{V}$).

Pin Configuration



Noise vs. Frequency (Measured)

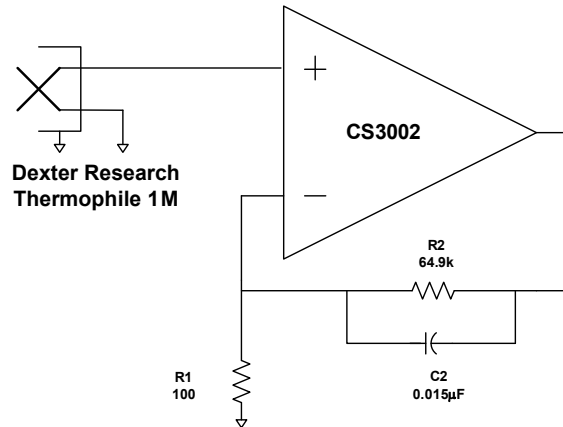
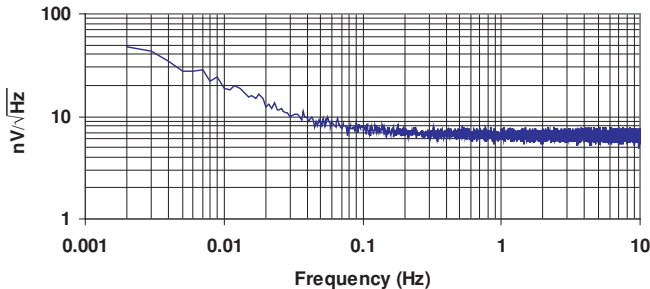


TABLE OF CONTENTS

1. Characteristics and Specifications	3
1.1 Electrical Characteristics	3
1.2 Absolute Maximum Ratings	3
2. Typical Performance Plots	4
3. Overview	8
3.1 Open-loop Gain and Phase Response	8
3.2 Open-loop Gain and Stability	9
3.2.1 Discussion	9
3.2.2 Gain Calculation Recommendations	11
Calculate the Compensation Capacitor Value:	11
Verify the Op Amp Compensation:	11
3.3 Applications	12
4. Package Drawing	13
5. Ordering Information	13
6. Environmental, Manufacturing, & Handling Information	13
7. Revision History	14

LIST OF FIGURES

Figure 1. Noise vs. Frequency (Measured).....	4
Figure 2. Noise vs. Frequency	4
Figure 3. 0.01Hz to 10Hz Noise	4
Figure 4. Offset Voltage Stability (DC to 3.2Hz)	4
Figure 5. Supply Current vs. Temperature.....	4
Figure 6. Supply Current vs. Supply Voltage	4
Figure 7. Open-loop Gain and Phase vs. Frequency.....	5
Figure 8. Open-loop Gain and Phase vs. Frequency (Expanded).....	5
Figure 9. Input Bias Current vs. Supply Voltage	6
Figure 10. Input Bias Current vs. Common Mode Voltage	6
Figure 11. Voltage Swing vs. Output Current	7
Figure 12. Voltage Swing vs. Output Current (5V)	7
Figure 13. Open-loop Gain and Phase Response	8
Figure 14. Non-inverting Gain Configuration	9
Figure 15. Non-inverting Gain Configuration with Compensation	9
Figure 16. Loop Gain Plot: Unity Gain and with Pole-zero Compensation	10
Figure 17. Thermopile Amplifier with a Gain of 650V/V	12
Figure 18. Load Cell Bridge Amplifier and A/D Converter	12

1. CHARACTERISTICS AND SPECIFICATIONS

1.1 Electrical Characteristics

Typical characteristics conditions:

- $T_A = 25^\circ\text{C}$, $V_+ = +5\text{V}$, $V_- = 0\text{V}$, $V_{CM} = 2.5\text{V}$
- All voltages are measured with respect to V_-

Minimum/Maximum characteristics conditions:

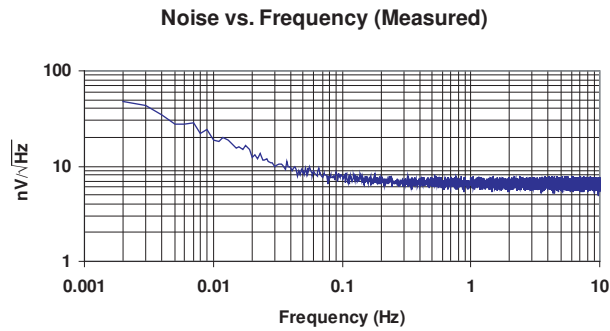
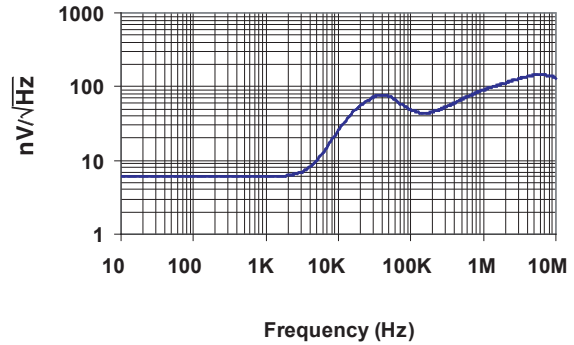
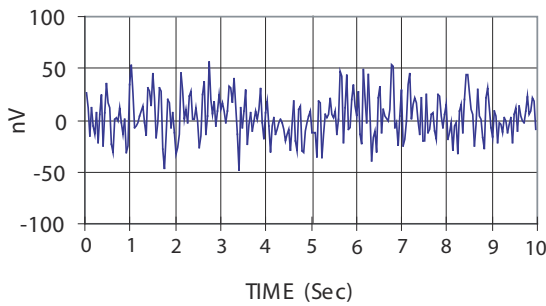
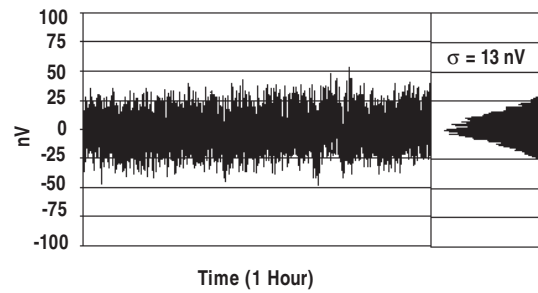
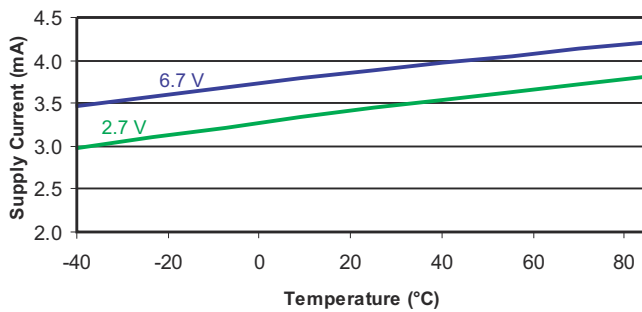
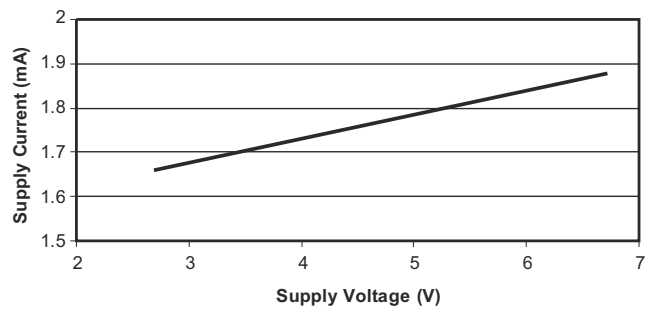
- $T_J = -40^\circ\text{C}$ to $+125^\circ\text{C}$, $V_+ = +5\text{V}$, $V_- = 0\text{V}$, $V_{CM} = 2.5\text{V}$

Parameter	Condition	Min	Typ	Max	Unit
Input Offset Voltage (Note 1)		-	-	± 10	μV
Average Input Offset Drift (Note 1)		-	± 0.01	± 0.05	$\mu\text{V}/^\circ\text{C}$
Long Term Input Offset Voltage Stability		(Note 2)			
Input Bias Current	$T_A = 25^\circ\text{C}$	-	± 100 -	- ± 1000	pA pA
Input Offset Current	$T_A = 25^\circ\text{C}$	-	± 200 -	- ± 2000	pA pA
Input Noise Voltage Density	$R_S = 100\Omega$, $f_0 = 1\text{Hz}$ $R_S = 100\Omega$, $f_0 = 1\text{kHz}$	-	6 6		$\text{nV}/\sqrt{\text{Hz}}$ $\text{nV}/\sqrt{\text{Hz}}$
Input Noise Voltage	0.1 to 10Hz	-	125		nV_{pp}
Input Noise Current Density	$f_0 = 1\text{Hz}$	-	100		$\text{fA}/\sqrt{\text{Hz}}$
Input Noise Current	0.1 to 10Hz	-	1.9		pA_{p-p}
Input Common Mode Voltage Range		-0.1	-	$(V_+) - 1.25$	V
Common Mode Rejection Ratio (DC) (Note 3)		115	120	-	dB
Power Supply Rejection Ratio		120	136	-	dB
Large Signal Voltage Gain (Note 4)	$R_L = 2\text{k}\Omega$ to $V_+/2$	200	300	-	dB
Output Voltage Swing	$R_L = 2\text{k}\Omega$ to $V_+/2$ $R_L = 100\text{k}\Omega$ to $V_+/2$	+4.7	- +4.99	-	V V
Slew Rate	$R_L = 2\text{k}$, 100pF		5	-	$\text{V}/\mu\text{s}$
Overload Recovery Time		-	100	-	μs
PWDN Threshold (Note 5)		$(V_+) - 1.0$	-	-	V
Start-up Time (Note 5)		-	9	12	ms

- Notes:
1. This parameter is guaranteed by design and laboratory characterization. Thermocouple effects prohibit accurate measurement of these parameters in automatic test systems.
 2. 1000-hour life test data @ 125°C indicates randomly distributed variation approximately equal to measurement repeatability of $1\mu\text{V}$.
 3. Measured within the specified common mode range limits.
 4. Guaranteed within the output limits of $(V_+ - 0.3\text{V})$ to $(V_- + 0.3\text{V})$. Tested with proprietary production test method.
 5. The device has a controlled start-up behavior due to its complex open-loop gain characteristics. Start-up time applies when supply voltage is applied or when $\overline{\text{PDWN}}$ is released.

1.2 Absolute Maximum Ratings

Parameter	Min	Typ	Max	Unit
Supply Voltage [$(V_+) - (V_-)$]			6.8	V
Input Voltage	$(V_-) - 0.3$		$(V_+) + 0.3$	V
Storage Temperature Range	-65		+150	$^\circ\text{C}$

2. TYPICAL PERFORMANCE PLOTS

Figure 1. Noise vs. Frequency (Measured)

Figure 2. Noise vs. Frequency

Figure 3. 0.01 Hz to 10 Hz Noise

Figure 4. Offset Voltage Stability (DC to 3.2 Hz)

Figure 5. Supply Current vs. Temperature

Figure 6. Supply Current vs. Supply Voltage

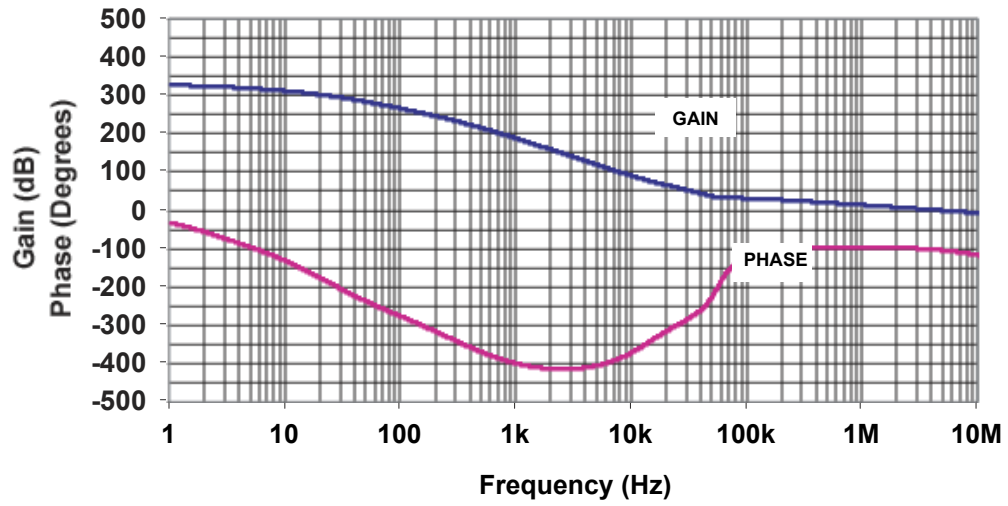


Figure 7. Open-loop Gain and Phase vs. Frequency

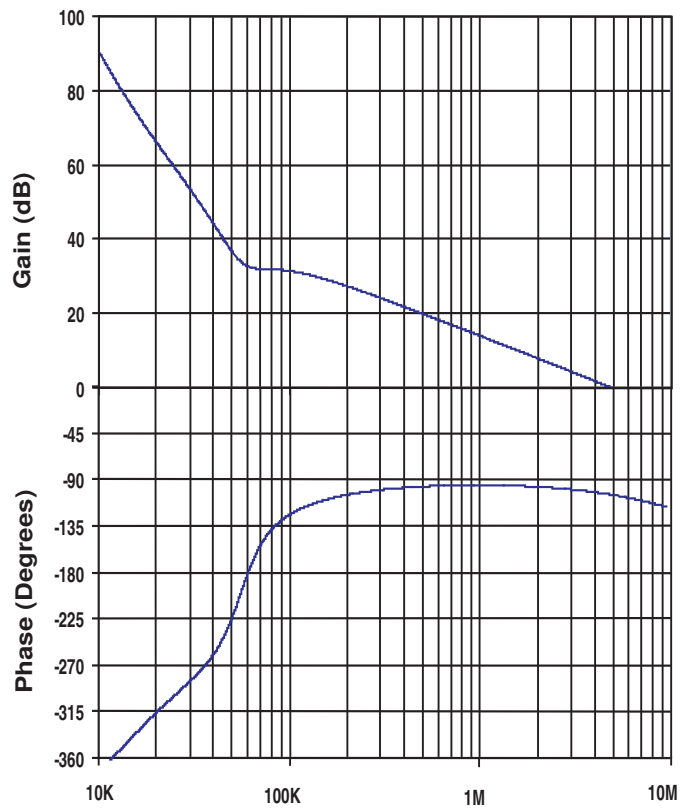


Figure 8. Open-loop Gain and Phase vs. Frequency (Expanded)

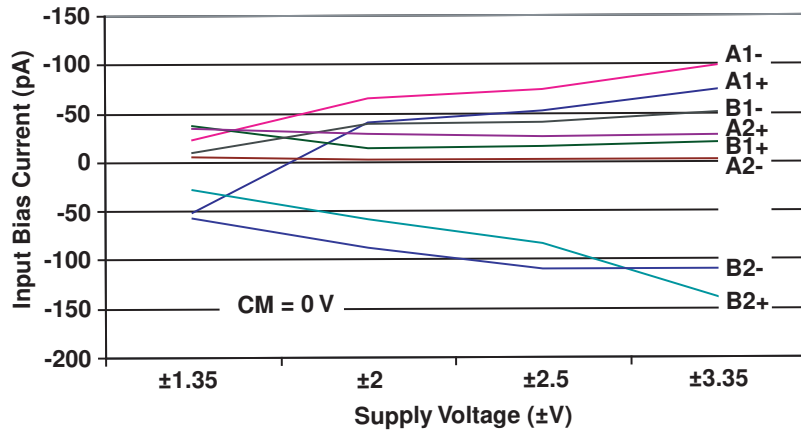


Figure 9. Input Bias Current vs. Supply Voltage

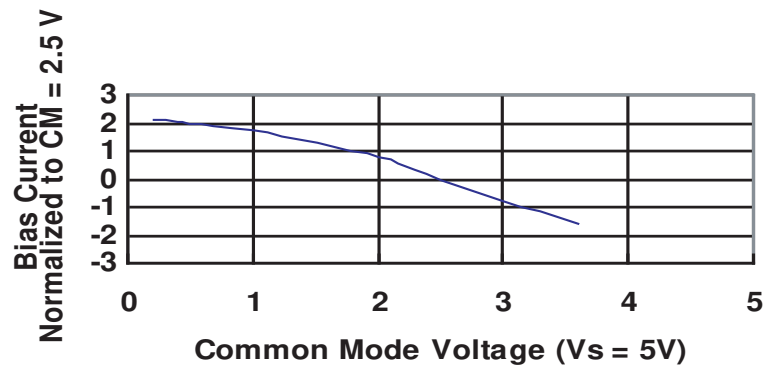


Figure 10. Input Bias Current vs. Common Mode Voltage

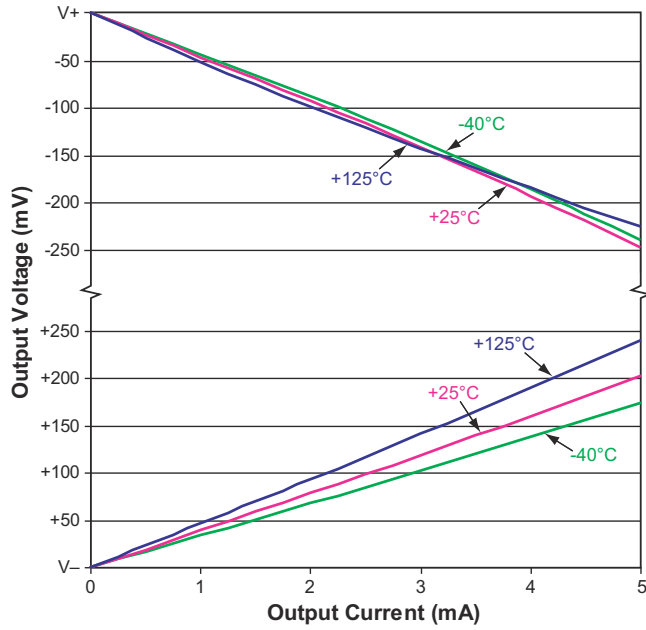


Figure 11. Voltage Swing vs. Output Current

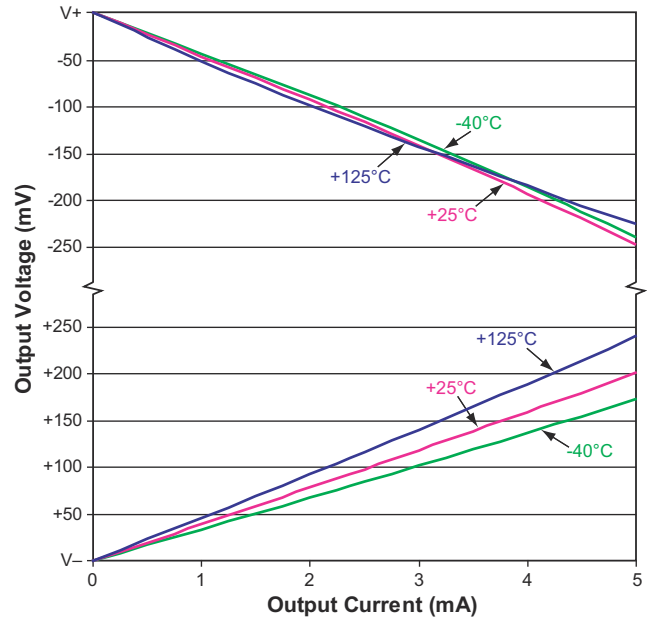


Figure 12. Voltage Swing vs. Output Current (5V)

3. OVERVIEW

The CS3002 amplifiers are designed for precision measurement of signals from DC to 2kHz when operating from a supply voltage of +2.7V to +6.7V ($\pm 1.35V$ to $\pm 3.35V$). The amplifiers are designed with a patented architecture that utilizes multiple amplifier stages to yield very high open-loop gain at frequencies of 10 kHz and below.

The amplifiers yield low noise and low offset drift while consuming relatively low supply current. An increase in noise floor above 2kHz is the result of intermediate stages of the amplifier being operated at very low currents. The amplifiers are intended for amplifying

small signals with large gains in applications where the output of the amplifier can be band-limited to frequencies below 2kHz.

3.1 Open-loop Gain and Phase Response

Figure 13 illustrates the open-loop gain and phase response of the CS3002. The gain slope of the amplifier is approximately -100dB/decade between 500Hz and 60kHz and transitions to -20dB/decade between 60kHz and its unity gain crossover frequency at approximately 4.8MHz. Phase margin at unity gain is about 70° and the gain margin is approximately 20dB.

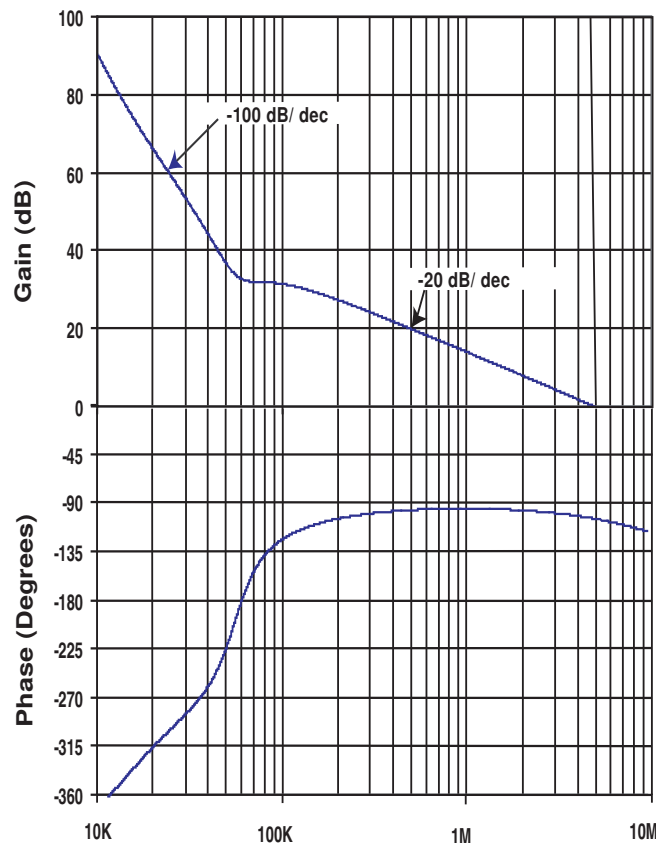


Figure 13. Open-loop Gain and Phase Response

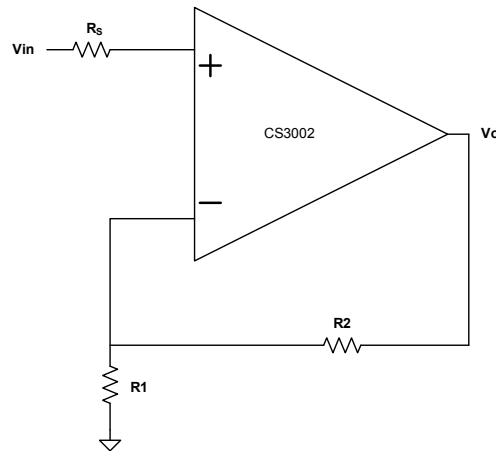


Figure 14. Non-inverting Gain Configuration

3.2 Open-loop Gain and Stability

3.2.1 Discussion

The CS3002 achieves ultra-high open-loop gain. Figure 14 illustrates the amplifier in a non-inverting gain configuration. The open-loop gain and phase plots indicate that the amplifier is stable for closed-loop gains less than 50V/V and $R1 \leq 100\Omega$. For a gain of 50, the phase margin is between 40° and 60° depending upon the loading conditions. As shown in Figure 15, on page 9, the operational amplifier has an input capacitance at the + and – signal inputs of typically 50pF. This capacitance adds an additional pole in the loop gain transfer function at a frequency defined using Equation 1:

$$f = \frac{1}{2\pi R \times C_{in}} \quad [\text{Eq. 1}]$$

where

$R = R1 \parallel R2$; the parallel combination of R1 and R2

A higher value for R produces a pole at a lower frequency, thus reducing the phase margin. Resistor R1 is recommended to be less than or equal to 100Ω, which results in a pole at 30MHz or higher. If a higher value of R1 is desired, compensation capacitor C2 should be added in parallel with resistor R2. Capacitor C2 should be chosen using Equation 2:

$$R2 \times C2 \geq R1 \times C_{in} \quad [\text{Eq. 2}]$$

The feedback capacitor C2 is required for closed-loop gains greater than 50V/V. The capacitor introduces a pole P_1 and a zero Z_1 in the loop gain transfer function $T(s)$, see Equation 3

$$T(s) = \left[\frac{-(1 + \frac{s}{Z_1})}{(1 + \frac{s}{P_1})} \right] \times A_{ol} \quad [\text{Eq. 3}]$$

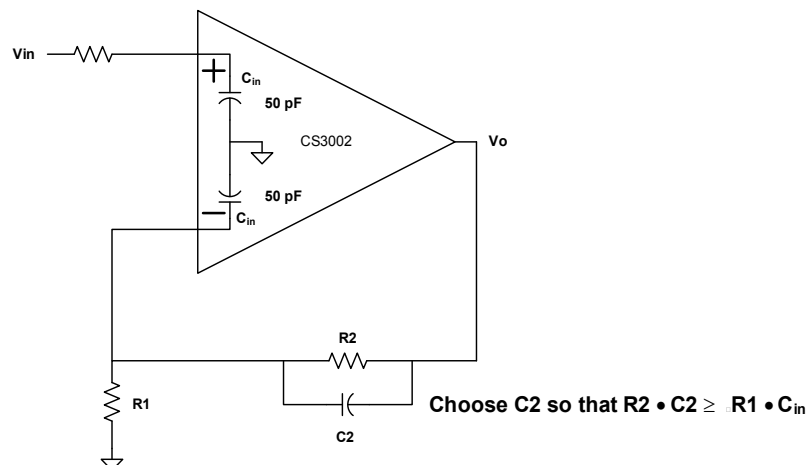


Figure 15. Non-inverting Gain Configuration with Compensation

Equation 4 is used to determine transfer function zero Z_1 .

$$Z_1 = \frac{1}{2\pi \times (A \times R1) \times C2} \quad [\text{Eq. 4}]$$

where

$$|A| = R2/R1$$

Substituting A into Equation 4 then zero Z_1 is:

$$Z_1 = \frac{1}{2\pi \times R2 \times C2} \quad [\text{Eq. 5}]$$

Equation 6 is used to determine the transfer function pole P_1 .

$$P_1 = \frac{1}{2\pi \times (R1 \parallel R2) \times C2} \cong \frac{1}{2\pi \times R1 \times C2} \quad [\text{Eq. 6}]$$

where

$$R2 \gg R1$$

This indicates that the separation of the pole and the zero is governed by the closed loop gain. It is required that the zero falls on the steep slope (-100dB/decade) of the loop gain plot so that there is some gain higher than 0dB (typically 20dB) at the hand-over frequency

(the frequency at which the slope changes from -100dB/decade to -20dB/decade). The loop gain plot shown in Figure 16 illustrates the unity gain configuration, and indicates how this is modified when using the amplifier in a higher gain configuration with compensation. If it is configured for higher gain, for example, 60dB, the x-axis will move up by 60dB (line B). Capacitor C2 adds a zero and a pole. The modified plot indicates the effects of introducing the pole and zero due to capacitor C2. The pole can be located at any frequency higher than the hand-over frequency, the zero has to be at a frequency lower than the hand-over frequency so as to provide adequate gain margin. The separation between the pole and the zero is governed by the closed loop gain. The zero (Z_1) occurs at the intersection of the -100dB/decade and -80dB/decade slopes. The point X in the figure should be at closed loop gain plus 20dB gain margin. The value for capacitor C2 is determined by Equation 7. Setting the

$$C2 = \frac{1}{2\pi \times R1 \times P_1} \quad [\text{Eq. 7}]$$

pole of the filter to $P_1 = 1\text{MHz}$ works very well and is independent of gain. As the closed loop gain is changed, the zero location is also modified if R1 remains fixed. Capacitor C2 can be increased in value to limit the amplifier's rising noise above 2kHz.

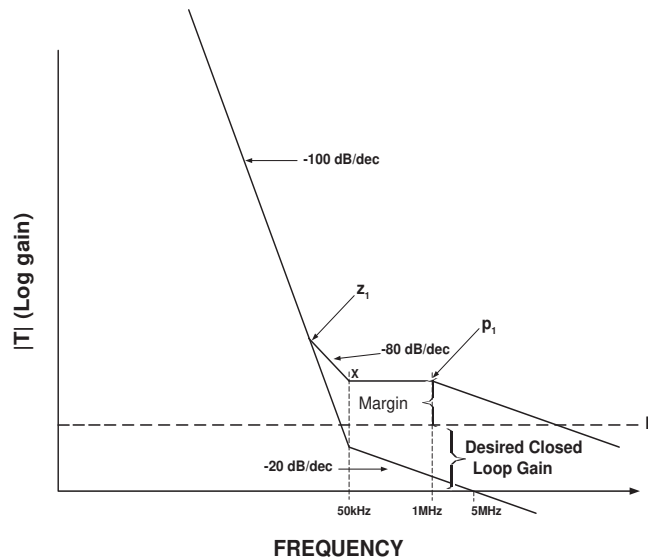


Figure 16. Loop Gain Plot: Unity Gain and with Pole-zero Compensation

3.2.2 Gain Calculation Recommendations

Condition 1: $|Av| \leq 50$ and $R1 \leq 100\Omega$

The op amp is inherently stable for $|Av| \leq 50$ and $R1 \leq 100\Omega$. Capacitor C2 is not required for compensation across resistor R2.

- 1) $|Av| = 1$ configuration has 70° phase margin and 20dB gain margin.
- 2) $|Av| = 50$ configuration has phase margin between 40° for $C_{LOAD} \leq 100$ pF and 60° for $C_{LOAD} = 0$ pF.

Condition 2: $|Av| \leq 50$ and $R1 > 100\Omega$

Compensation capacitor C2 across resistor R2 is required. Calculate C2 using Equation 8:

$$C2 \geq \frac{(R1 \times C_{in})}{R2} \quad [\text{Eq. 8}]$$

where

$$C_{in} = 50\text{pF}$$

Condition 3: $|Av| > 50$

Compensation capacitor C2 across resistor R2 is required. Calculate and verify a value for C2 using the following steps.

Calculate the Compensation Capacitor Value:

- 1) Calculate a value for C2 using Equation 9:

$$C2 = \frac{1}{[2\pi(R1 \parallel R2) \times P_1]} \quad [\text{Eq. 9}]$$

where

$$P_1 = 1\text{MHz}$$

To simplify the calculation, set the pole of the filter to $P_1 = 1\text{MHz}$. Pole P_1 must be set higher than the op amp's internal 50kHz crossover frequency.

- 2) Calculate a second value for C2 using Equation 10:

$$C2 \geq \frac{(R1 \times C_{in})}{R2} \quad [\text{Eq. 10}]$$

where

$$C_{in} = 50\text{pF}$$

- 3) Use the larger of the two values calculated in steps 1 and 2.

Verify the Op Amp Compensation:

Verify the op amp compensation using the open-loop gain and phase response Bode plot in [Figure 13](#). Plot the calculated closed loop gain transfer function and verify the following design criteria are met:

- 1) Pole $P_1 >$ op amp internal 50kHz crossover frequency

$$P_1 = \frac{1}{2\pi(R1 \parallel R2) \times C2} \quad [\text{Eq. 11}]$$

where

$$P_1 = 1\text{MHz}$$

To simplify the calculation, set the pole to $P_1 = 1\text{MHz}$.

- 2) $Z1 <$ op amp internal 50kHz crossover frequency

$$Z1 = \frac{1}{2\pi(R2 \times C2)} \quad [\text{Eq. 12}]$$

- 3) Gain margin above the open-loop gain transfer function is required. A gain margin of +20dB above the open-loop gain transfer function is optimal.

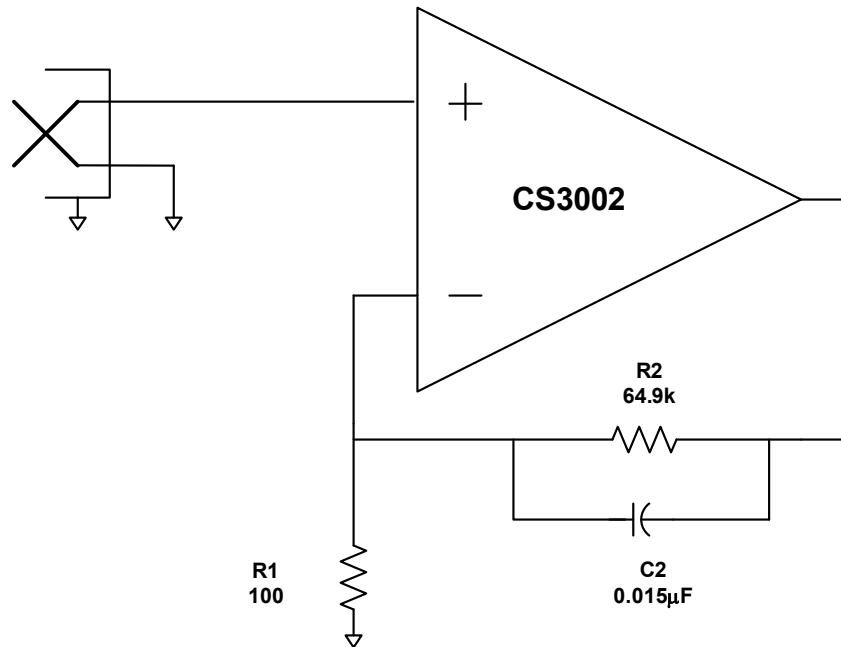


Figure 17. Thermopile Amplifier with a Gain of 650V/V

3.3 Applications

The CS3002 amplifiers are optimum for applications that require high gain and low drift. [Figure 17](#) illustrates a thermopile amplifier with a gain of 650V/V. The thermopile outputs only a few millivolts when subjected to infrared radiation. The amplifier is compensated and bandlimited by capacitor C2 in combination with resistor R2.

[Figure 18, on page 12](#) illustrates a load cell bridge amplifier with a gain of 768V/V. The load cell is excited with +5V and has a 1mV/V sensitivity. Its full scale output signal is amplified to produce a fully differential $\pm 3.8V$ into the CS5510/12 A/D converter. This circuit operates from +5V.

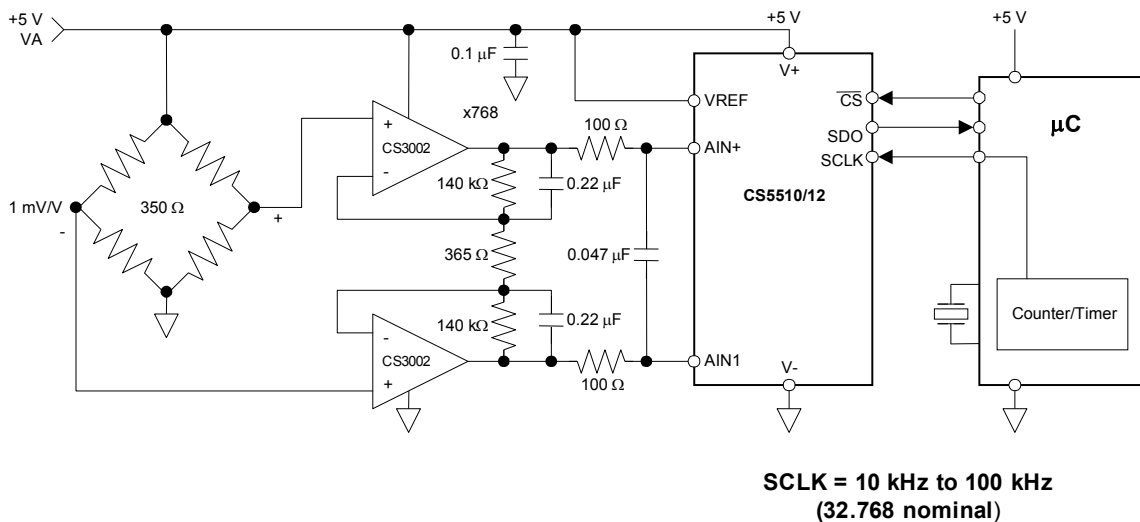
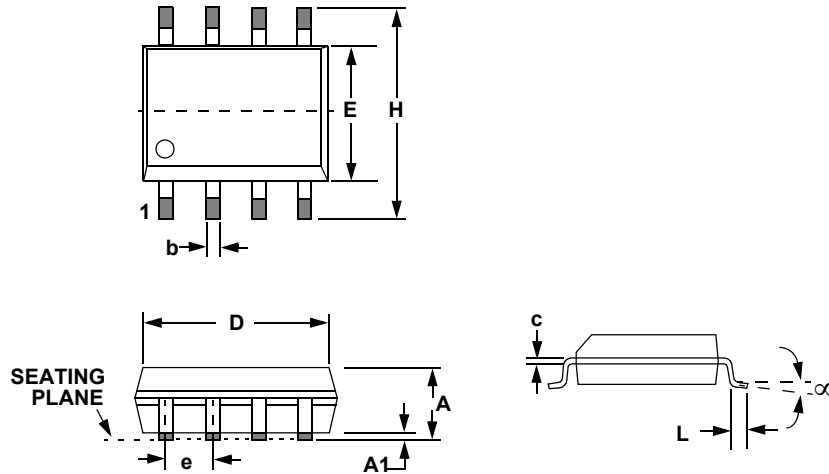


Figure 18. Load Cell Bridge Amplifier and A/D Converter

4. PACKAGE DRAWING
8L SOIC (150 MIL BODY) PACKAGE DRAWING


DIM	INCHES		MILLIMETERS	
	MIN	MAX	MIN	MAX
A	0.053	0.069	1.35	1.75
A1	0.004	0.010	0.10	0.25
B	0.013	0.020	0.33	0.51
C	0.007	0.010	0.19	0.25
D	0.189	0.197	4.80	5.00
E	0.150	0.157	3.80	4.00
e	0.040	0.060	1.02	1.52
H	0.228	0.244	5.80	6.20
L	0.016	0.050	0.40	1.27
∞	0°	8°	0°	8°

JEDEC #: MS-012

5. ORDERING INFORMATION

Model	Container	Temperature	Package
CS3002-ISZ (lead free)	Bulk	-40 to +85 °C	8-pin SOIC (Lead Free)
CS3002-ISZR (lead free)	Tape & Reel		

6. ENVIRONMENTAL, MANUFACTURING, & HANDLING INFORMATION

Model Number	Peak Reflow Temp	MSL Rating*	Max Floor Life
CS3002-ISZ (lead free)	260 °C	2	365 Days

* MSL (Moisture Sensitivity Level) as specified by IPC/JEDEC J-STD-020.

7. REVISION HISTORY

Revision	Date	Changes
F3	OCT 2004	Added lead-free device ordering information.
F4	AUG 2005	Added MSL specifications. Updated legal notice. Added leaded (Pb) devices.
F5	AUG 2006	Updated <i>Typical Performance Plots</i> .
F6	SEP 2006	Corrected error in Ordering Information section.
F7	NOV 2007	Added additional information regarding open-loop and gain stability compensation.
F8	OCT 2008	Minor, cosmetic correction to caption for Figure 10.
F9	JUL 2009	Removed lead-containing devices from ordering information.
F10	DEC 2012	Removed CS3001 and corrected typographical errors.

Contacting Cirrus Logic Support

For all product questions and inquiries contact a Cirrus Logic Sales Representative.

To find the one nearest to you go to www.cirrus.com

IMPORTANT NOTICE

Cirrus Logic, Inc. and its subsidiaries ("Cirrus") believe that the information contained in this document is accurate and reliable. However, the information is subject to change without notice and is provided "AS IS" without warranty of any kind (express or implied). Customers are advised to obtain the latest version of relevant information to verify, before placing orders, that information being relied on is current and complete. All products are sold subject to the terms and conditions of sale supplied at the time of order acknowledgment, including those pertaining to warranty, indemnification, and limitation of liability. No responsibility is assumed by Cirrus for the use of this information, including use of this information as the basis for manufacture or sale of any items, or for infringement of patents or other rights of third parties. This document is the property of Cirrus and by furnishing this information, Cirrus grants no license, express or implied under any patents, mask work rights, copyrights, trademarks, trade secrets or other intellectual property rights. Cirrus owns the copyrights associated with the information contained herein and gives consent for copies to be made of the information only for use within your organization with respect to Cirrus integrated circuits or other products of Cirrus. This consent does not extend to other copying such as copying for general distribution, advertising or promotional purposes, or for creating any work for resale.

CERTAIN APPLICATIONS USING SEMICONDUCTOR PRODUCTS MAY INVOLVE POTENTIAL RISKS OF DEATH, PERSONAL INJURY, OR SEVERE PROPERTY OR ENVIRONMENTAL DAMAGE ("CRITICAL APPLICATIONS"). CIRRUS PRODUCTS ARE NOT DESIGNED, AUTHORIZED OR WARRANTED FOR USE IN PRODUCTS SURGICALLY IMPLANTED INTO THE BODY, AUTOMOTIVE SAFETY OR SECURITY DEVICES, LIFE SUPPORT PRODUCTS OR OTHER CRITICAL APPLICATIONS. INCLUSION OF CIRRUS PRODUCTS IN SUCH APPLICATIONS IS UNDERSTOOD TO BE FULLY AT THE CUSTOMER'S RISK AND CIRRUS DISCLAIMS AND MAKES NO WARRANTY, EXPRESS, STATUTORY OR IMPLIED, INCLUDING THE IMPLIED WARRANTIES OF MERCHANTABILITY AND FITNESS FOR PARTICULAR PURPOSE, WITH REGARD TO ANY CIRRUS PRODUCT THAT IS USED IN SUCH A MANNER. IF THE CUSTOMER OR CUSTOMER'S CUSTOMER USES OR PERMITS THE USE OF CIRRUS PRODUCTS IN CRITICAL APPLICATIONS, CUSTOMER AGREES, BY SUCH USE, TO FULLY INDEMNIFY CIRRUS, ITS OFFICERS, DIRECTORS, EMPLOYEES, DISTRIBUTORS AND OTHER AGENTS FROM ANY AND ALL LIABILITY, INCLUDING ATTORNEYS' FEES AND COSTS, THAT MAY RESULT FROM OR ARISE IN CONNECTION WITH THESE USES.

Cirrus Logic, Cirrus, and the Cirrus Logic logo designs are trademarks of Cirrus Logic, Inc. All other brand and product names in this document may be trademarks or service marks of their respective owners.