



Chipsmall Limited consists of a professional team with an average of over 10 year of expertise in the distribution of electronic components. Based in Hongkong, we have already established firm and mutual-benefit business relationships with customers from,Europe,America and south Asia,supplying obsolete and hard-to-find components to meet their specific needs.

With the principle of “Quality Parts,Customers Priority,Honest Operation,and Considerate Service”,our business mainly focus on the distribution of electronic components. Line cards we deal with include Microchip,ALPS,ROHM,Xilinx,Pulse,ON,Everlight and Freescale. Main products comprise IC,Modules,Potentiometer,IC Socket,Relay,Connector.Our parts cover such applications as commercial,industrial, and automotives areas.

We are looking forward to setting up business relationship with you and hope to provide you with the best service and solution. Let us make a better world for our industry!



Contact us

Tel: +86-755-8981 8866 Fax: +86-755-8427 6832

Email & Skype: info@chipsmall.com Web: www.chipsmall.com

Address: A1208, Overseas Decoration Building, #122 Zhenhua RD., Futian, Shenzhen, China



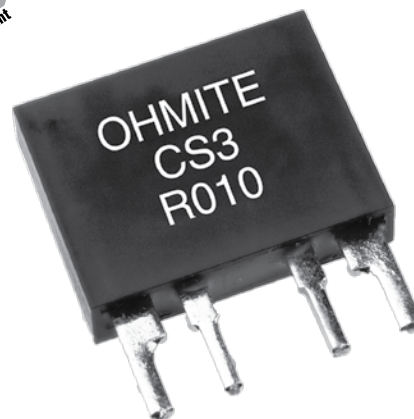
CS3 Series

Wire Element Four Terminal Precision Current Sense

The CS3 Series utilizes state of the art technology to achieve highly reliable non-inductive performance. The CS3 is ideal for current monitoring and control applications.

FEATURES

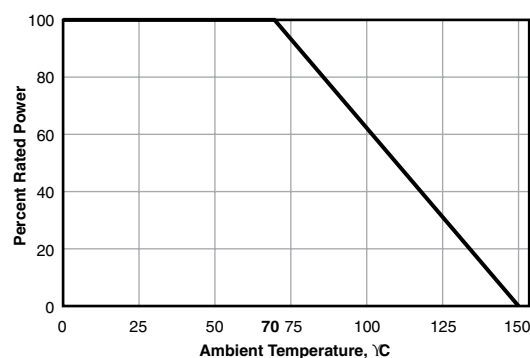
- Values beginning at 1 milliohm
- Non Inductive Design
- Four terminal Kelvin connection



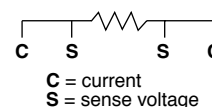
CHARACTERISTICS

Terminal Material	Kelvin Terminals; 97% Sn / 3% Ag solder over copper
Encapsulation	Polyester over resistance element
Standard Resistance Values	1 mΩ - 50 mΩ
Resistance Tolerances	1%, 2%, 5%
Temperature Coefficient	TC referenced to 25°C, ΔR taken at -15°C and +105°C, 60ppm/°C
Power Rating	3W at 70°C max. 40Amp permanent
Operating Temp.	-55°C to 150°C
Storage Temp.	-40°C to 85°C

Derating



Internal Circuit



PERFORMANCE DATA

Load Life	(1,000 hours at rated power at 70°C)	ΔR 0.2% max.
Moisture Resistance	(Mil-Std-202, Method 106, Cond. A)	ΔR 0.2% max.
Thermal Shock	(Mil-Std-202, Method 107)	ΔR 0.2% max.

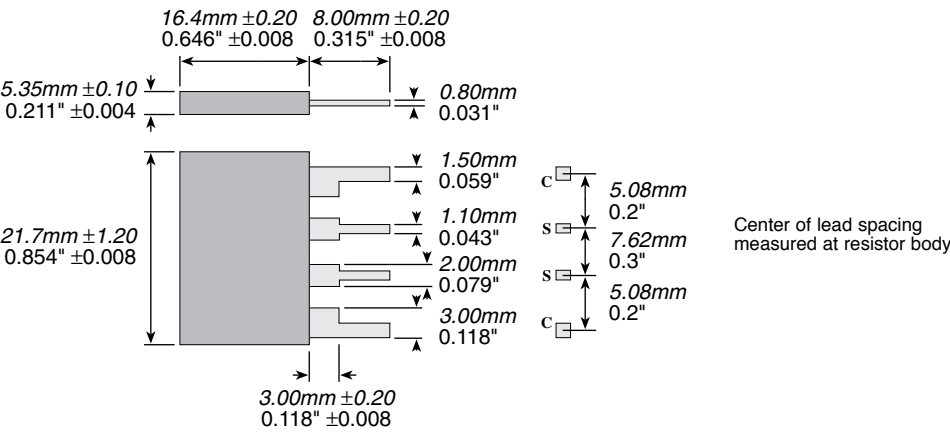
(continued)

CS3 Series

Wire Element Four Terminal Precision Current Sense

DIMENSIONS

(mm/in.)



ORDERING INFORMATION

C	S	3	J	R	0	5	0	E
Style	Tolerance			Ohms				RoHS Compliant
	F = 1%			R = Decimal				Non-compliant
	G = 2%			Example:				version not
	J = 5%			R010 = 0.010				recommended for
				R005 = 0.005				new designs

Standard part numbers for CS3 series

Series Tolerance	CS3F 1%	Series Tolerance	CS3F 1%
Ohms		Ohms	
0.001	CS3FR001E	0.015	CS3FR015E
0.002	CS3FR002E	0.02	CS3FR020E
0.003	CS3FR003E	0.025	CS3FR025E
0.005	CS3FR005E	0.03	CS3FR030E
0.01	CS3FR010E	0.036	CS3FR036E
		0.05	CS3FR050E