



Chipsmall Limited consists of a professional team with an average of over 10 year of expertise in the distribution of electronic components. Based in Hongkong, we have already established firm and mutual-benefit business relationships with customers from,Europe,America and south Asia,supplying obsolete and hard-to-find components to meet their specific needs.

With the principle of "Quality Parts,Customers Priority,Honest Operation,and Considerate Service",our business mainly focus on the distribution of electronic components. Line cards we deal with include Microchip,ALPS,ROHM,Xilinx,Pulse,ON,Everlight and Freescale. Main products comprise IC,Modules,Potentiometer,IC Socket,Relay,Connector.Our parts cover such applications as commercial,industrial, and automotives areas.

We are looking forward to setting up business relationship with you and hope to provide you with the best service and solution. Let us make a better world for our industry!



Contact us

Tel: +86-755-8981 8866 Fax: +86-755-8427 6832

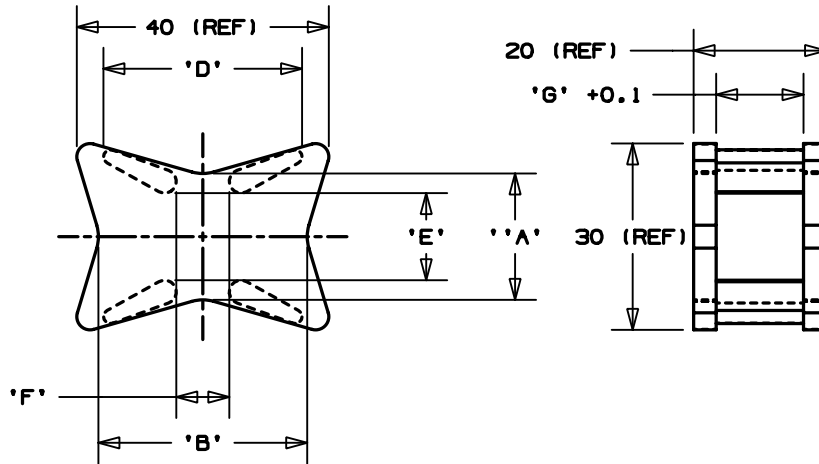
Email & Skype: info@chipsmall.com Web: www.chipsmall.com

Address: A1208, Overseas Decoration Building, #122 Zhenhua RD., Futian, Shenzhen, China



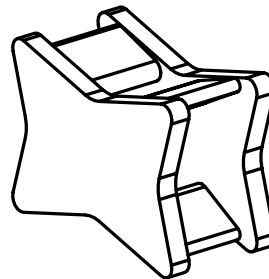
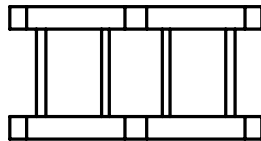
THIS COPY IS PROVIDED ON A RESTRICTED BASIS AND IS NOT TO BE USED IN ANY WAY DETRIMENTAL TO THE INTERESTS OF PANDUIT CORP.

PANDUIT PART NO.	DIMENSIONS							WEIGHT grams / 100 pcs
	'A'	'B'	'C'	'D'	'E'	'F'	'G'	
CSEH15A30-_20	18.6	31	26.8	30	11.6	8	13.2	833
CSEH15A30-_0								
CSEH15A30-_100								



NOTES:

- MATERIAL:**
 -_20 NYLON 6/6
 -_0 NYLON 6/6 UV STABILIZED
 -_100 POLYPROPYLENE UV STABILIZED
 IMPACT MODIFIED
- COLOR:** -_20, -_0, & -_100 BLACK
- FOR USE WITH PANDUIT CABLE TIE TYPE:**
 M- MINATURE I- INTERMEDIATE
 S- STANDARD H- HEAVY
 EH- EXTRA HEAVY
- SEE CURRENT PRICE SHEET FOR PART NUMBER SUFFIX DESIGNATION PACKAGE SIZE AND COLOR.**



DIMENSIONS ARE METRIC [mm]	
DWG FILENAME/LAYERS G1932BV_PB_CSEH15A30_00	
PANDUIT CORP. TINLEY PARK, ILLINOIS	
SPACER	
UNLESS OTHERWISE SPECIFIED, DIMENSIONAL TOLERANCES ARE: ±0.5mm	UNLESS OTHERWISE SPECIFIED, ALL DIMENSIONS ARE GIVEN IN METRIC, THIRD ANGLE PROJECTION.
DRAWN BY JAD	MAT'L:
DATE 4/28/03	SEE NOTE 1
CHK'D	SCALE NONE
REV	DWG NO. GB1932BV
DATE	SIZE A
BY	
CHK	

REV	DATE	BY	CHK	DESCRIPTION	ECN	R	CUST	SUP
R	4/28/03	JAD		INITIAL RELEASE	GB1932BV	R		