



Chipsmall Limited consists of a professional team with an average of over 10 year of expertise in the distribution of electronic components. Based in Hongkong, we have already established firm and mutual-benefit business relationships with customers from,Europe,America and south Asia,supplying obsolete and hard-to-find components to meet their specific needs.

With the principle of “Quality Parts,Customers Priority,Honest Operation,and Considerate Service”,our business mainly focus on the distribution of electronic components. Line cards we deal with include Microchip,ALPS,ROHM,Xilinx,Pulse,ON,Everlight and Freescale. Main products comprise IC,Modules,Potentiometer,IC Socket,Relay,Connector.Our parts cover such applications as commercial,industrial, and automotives areas.

We are looking forward to setting up business relationship with you and hope to provide you with the best service and solution. Let us make a better world for our industry!



Contact us

Tel: +86-755-8981 8866 Fax: +86-755-8427 6832

Email & Skype: info@chipsmall.com Web: www.chipsmall.com

Address: A1208, Overseas Decoration Building, #122 Zhenhua RD., Futian, Shenzhen, China



CSG series

Switch guards for switch series 5000M - 600H



DISTINCTIVE FEATURES

Modern, patented design

Lightweight

Anti-tamper wire seal hole as standard



GENERAL SPECIFICATIONS

- APEM SAS patented design
- Operating temperature : -20 °C to +55 °C (-4 °F to +131 °F)
- Storage temperature : -40 °C to +85 °C (-40 °F to +185 °F)
- Switch guards are designed to prevent accidental lever operation on switches with \varnothing 11.9 (.468) or \varnothing 12 (.472) threaded bushing and lever length 17.5 (.688) outside bushing.
When the guard is raised, the lever can be operated freely.
When the guard is fully depressed, the lever is locked in a stable position.
Please note that these guards are not intended to reset the actuator in the desired position.
For correct switch operation, the switch guard should be adjusted properly (see "Mounting" below).

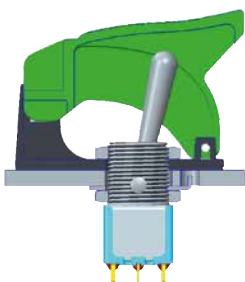


MATERIALS

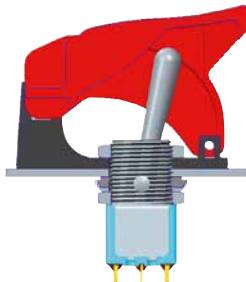
- Support plate : thermoplastic
- Cap : thermoplastic



MOUNTING



Standard



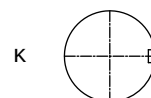
With K sealing option

The company reserves the right to change specifications without notice.



PANEL CUT-OUT

FOR BUSHING WITH KEYWAY

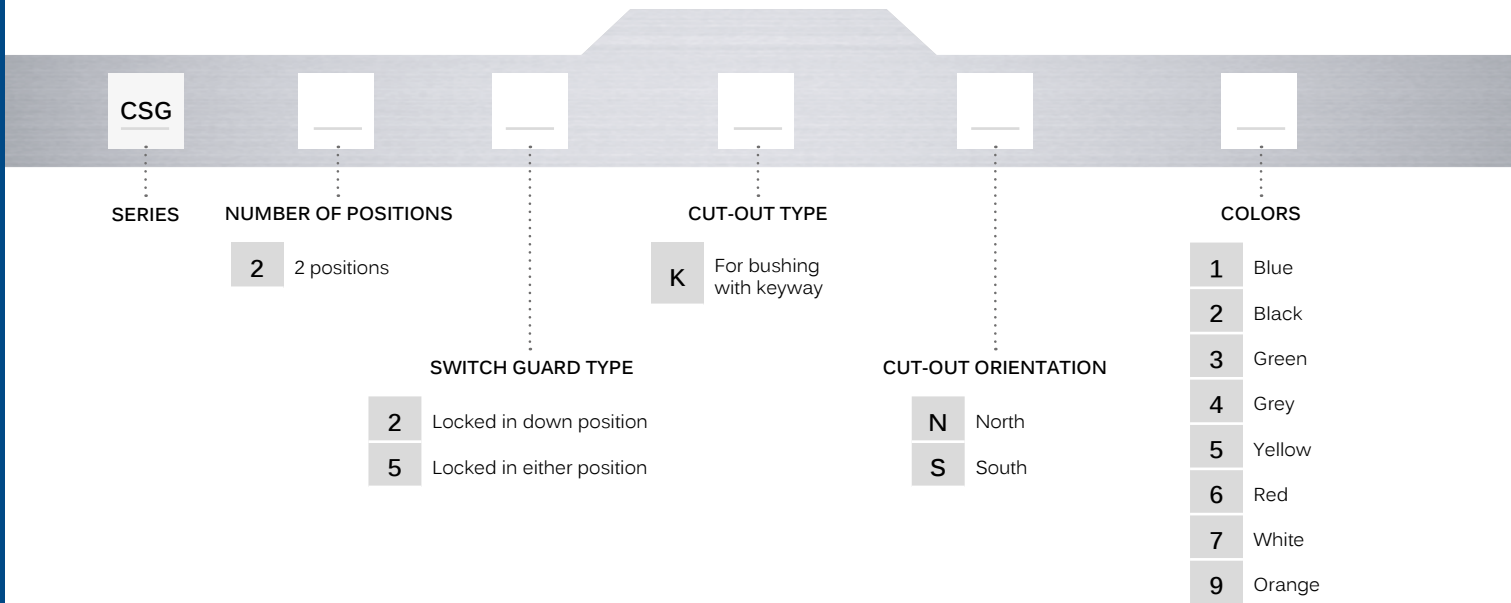


K

CSG series



Switch guards for switch series 5000M - 600H

BUILD YOUR PART NUMBER



ABOUT THIS SERIES

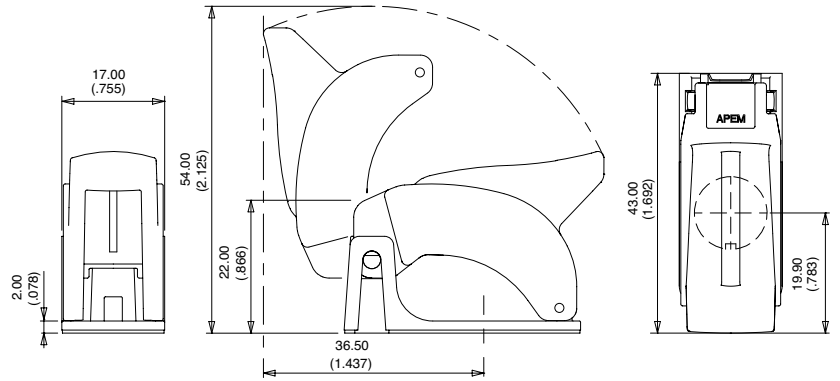
On the following pages, you will find successively basic part numbers and options in the same order as in above chart.

-  **Notice** : please note that not all combinations of above numbers are available. Refer to the following pages for further information.
-  **Mounting accessories** : supplied with the switch or to order separately (see "Hardware" section of website).

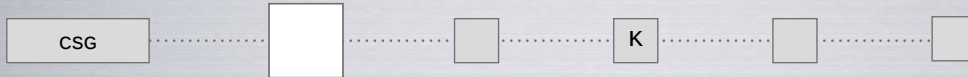
DIMENSIONS



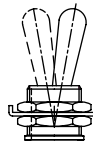
Note : Ø 1.60 mm holes for wiring a seal are standard on all models.



NUMBER OF POSITIONS



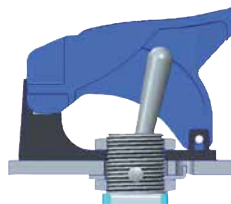
2 2 positions



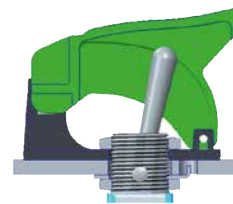
SWITCH GUARD TYPE



2 Locked in down position
5 Locked in either position

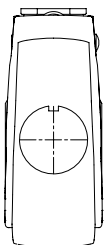
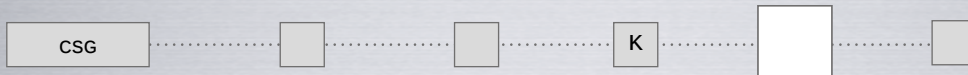


2

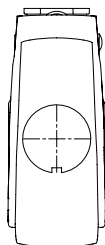


5

CUT-OUT ORIENTATION



N

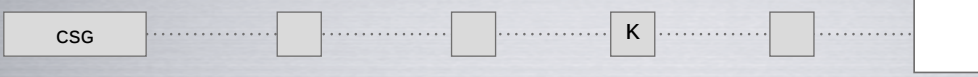


S

CSG series

Switch guards for switch series 5000M - 600H

COLORS



- 1 Blue
- 2 Black
- 3 Green
- 4 Grey
- 5 Yellow
- 6 Red
- 7 White
- 9 Orange

