



Chipsmall Limited consists of a professional team with an average of over 10 year of expertise in the distribution of electronic components. Based in Hongkong, we have already established firm and mutual-benefit business relationships with customers from,Europe,America and south Asia,supplying obsolete and hard-to-find components to meet their specific needs.

With the principle of “Quality Parts,Customers Priority,Honest Operation,and Considerate Service”,our business mainly focus on the distribution of electronic components. Line cards we deal with include Microchip,ALPS,ROHM,Xilinx,Pulse,ON,Everlight and Freescale. Main products comprise IC,Modules,Potentiometer,IC Socket,Relay,Connector.Our parts cover such applications as commercial,industrial, and automotives areas.

We are looking forward to setting up business relationship with you and hope to provide you with the best service and solution. Let us make a better world for our industry!



Contact us

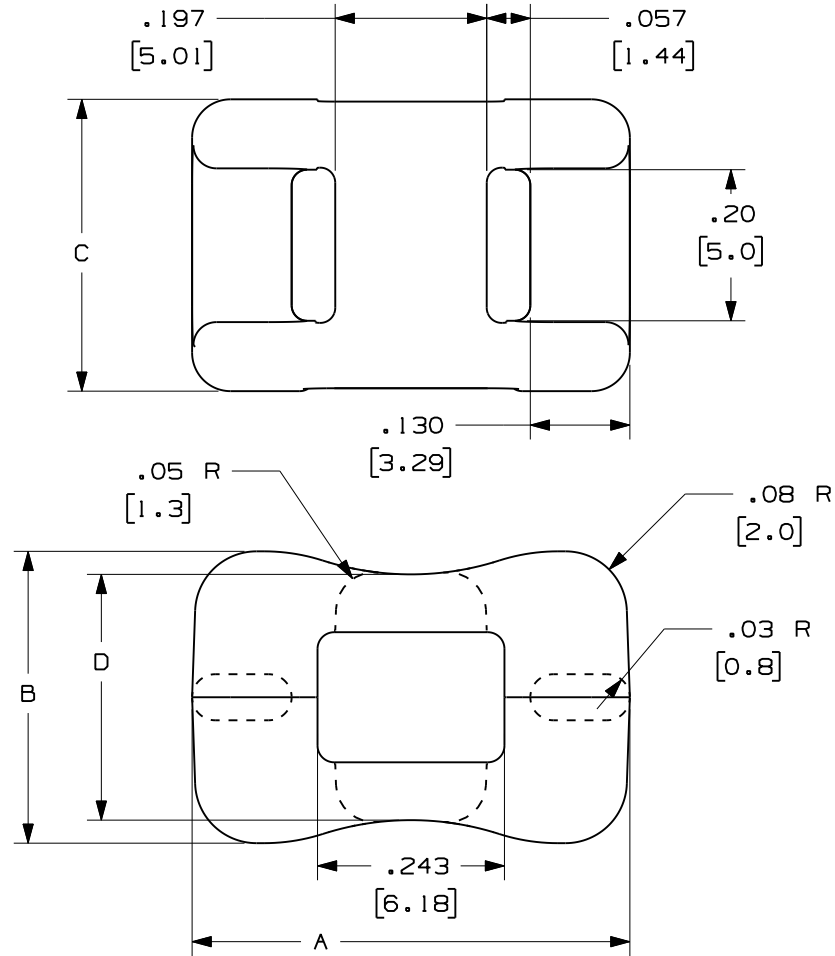
Tel: +86-755-8981 8866 Fax: +86-755-8427 6832

Email & Skype: info@chipsmall.com Web: www.chipsmall.com

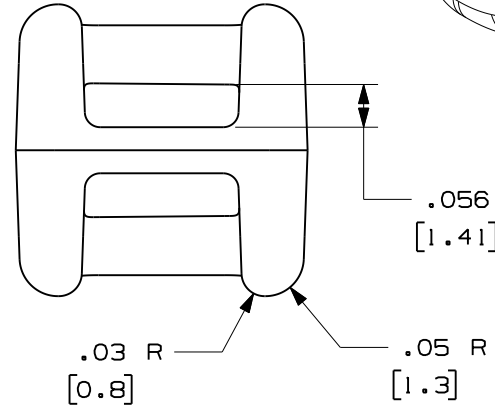
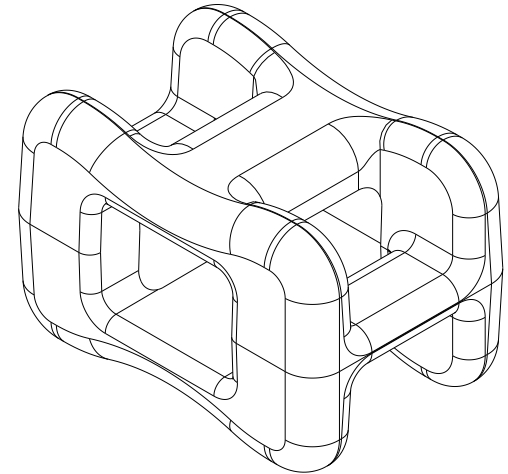
Address: A1208, Overseas Decoration Building, #122 Zhenhua RD., Futian, Shenzhen, China



THIS COPY IS PROVIDED ON A RESTRICTED BASIS AND IS NOT TO BE USED IN ANY WAY DETRIMENTAL TO THE INTERESTS OF PANDUIT CORP.



PANDUIT PART NO.	A in (mm)	B in (mm)	C in (mm)	D in (mm)	TENSILE STRENGTH lbs. (N)	WEIGHT lbs. (g)/100pcs.
CSMS-D71	.570 (14.48)	.38 (9.7)	.38 (9.7)	.320 (8.13)	50 (222)	.155 (10.69)



NOTES:

- 1) DIMENSIONS IN () ARE IN METRIC UNITS
- 2) SEE WWW.PANDUIT.COM FOR PART NUMBER SUFFIX DESIGNATION FOR PACKAGE SIZE AND PART COLOR.
- 3) ALL DIMENSIONS NOT INCLUDED IN TABLE ARE REFERENCE ONLY

CAD FILENAME

10B012DP_DC/00B

PANDUIT CORP TINLEY PARK, ILLINOIS

LIGHTWEIGHT CABLE SPACER

DIMENSIONAL TOLERANCES ARE:
 (.X) ±0.05 (1.3) (.XXX) ±.010 (0.25)
 (.XX) ±0.02 (0.5) ANGLES ±5 DEG

UNLESS OTHERWISE SPECIFIED, ALL DIMENSIONS ARE GIVEN IN INCHES, THIRD ANGLE PROJECTION

REV	DATE	BY	CHK	DESCRIPTION	ECN	CHK	CUST	SUP
01	10/21/11	SHOR	PBC	REVISED DIMENSIONAL DETAIL	10B012DP_DC			
R	4/4/2011	JADE	MJVE	INITIAL RELEASE				

DRAWN BY	JADE
DATE	4-APR-11
CK'D	MJVE

MAT'L/COLOR:
PEEK

SCALE	4/1
DRAWING NO.	10B012DP_DC
DWG SIZE	A