



Chipsmall Limited consists of a professional team with an average of over 10 year of expertise in the distribution of electronic components. Based in Hongkong, we have already established firm and mutual-benefit business relationships with customers from,Europe,America and south Asia,supplying obsolete and hard-to-find components to meet their specific needs.

With the principle of “Quality Parts,Customers Priority,Honest Operation,and Considerate Service”,our business mainly focus on the distribution of electronic components. Line cards we deal with include Microchip,ALPS,ROHM,Xilinx,Pulse,ON,Everlight and Freescale. Main products comprise IC,Modules,Potentiometer,IC Socket,Relay,Connector.Our parts cover such applications as commercial,industrial, and automotives areas.

We are looking forward to setting up business relationship with you and hope to provide you with the best service and solution. Let us make a better world for our industry!



Contact us

Tel: +86-755-8981 8866 Fax: +86-755-8427 6832

Email & Skype: info@chipsmall.com Web: www.chipsmall.com

Address: A1208, Overseas Decoration Building, #122 Zhenhua RD., Futian, Shenzhen, China



Type 1 Mild Steel Splitter Trough *CST Series*

Hinged Door with Screw



Application

- The splitter troughs are designed for distribution of up to 600 A (max) service using either 3 or 4 wires.

Standards

- CSA Certified
- Complies with
 - IEC 60529, IP20

Construction

- Formed and spot welded from 14 or 16 gauge steel.
- Factory installed splitter blocks.
- Series of knockouts on each side.
- Padlocking hasp.

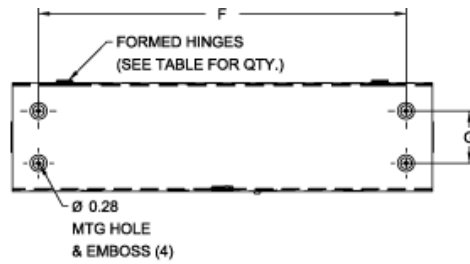
Finish

- Cover and enclosure are finished in recoatable smooth ANSI 61 gray powder coating.

Accessories

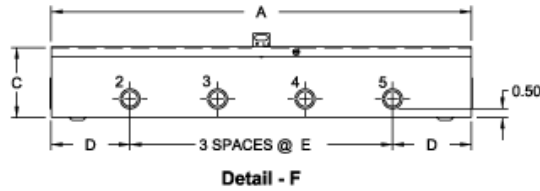
- Splitter Blocks
- Grounding Kits



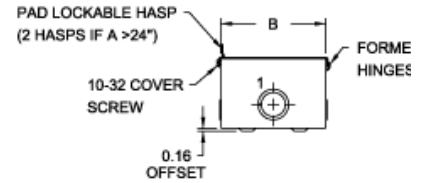


NOTE: KNOCKOUTS TYPICAL ON OPPOSITE SIDES

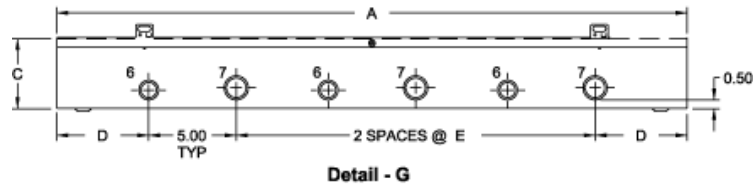
Top View



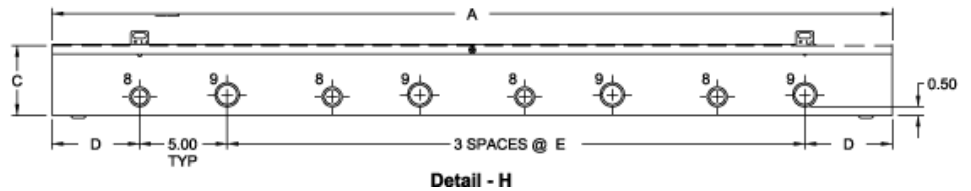
Detail - F



End View



Detail - G



Detail - H

3 Wire	Part Number		CU/AL Amps	Dimensions			Ship Wt. lbs
	4 Wire	Less Blocks		H	W	D	
CST273	CST274	-	70/70	24.00	6.00	4.00	12
CST373	CST374	-	70/70	36.00	6.00	4.00	17
CST473	CST474	-	70/70	48.00	6.00	4.00	21
CST2103	CST2104	CST2100	125/120	24.00	6.00	4.00	12
CST3103	CST3104	CST3100	125/120	36.00	6.00	4.00	17
CST4103	CST4104	CST4100	125/120	48.00	6.00	4.00	21
CST6103*	CST6104*	CST6100*	125/120	72.00	8.00	5.00	39
CST2203*	-	CST2200*	225/225	24.00	8.00	5.00	16
CST3203*	CST3204*	CST3200*	225/225	36.00	8.00	5.00	22
CST4203*	CST4204*	CST4200*	225/225	48.00	8.00	5.00	27
CST5203*	CST5204*	CST5200*	225/225	60.00	8.00	5.00	33
CST6203*	CST6204*	-	225/225	72.00	8.00	5.00	39
CST3403*	-	CST3400*	400/340	36.00	10.00	6.00	35
CST4403*	CST4404*	CST4400*	400/340	48.00	10.00	6.00	45
CST5403*	CST5404*	CST5400*	400/340	60.00	10.00	6.00	58
CST6403*	CST6404*	CST6400*	400/340	72.00	10.00	6.00	62
CST4603*	CST4604*	-	600/574	48.00	10.00	6.00	45
CST5603*	CST5604*	-	600/574	60.00	10.00	6.00	58
CST6603*	CST6604*	-	600/574	72.00	10.00	6.00	62

* 14 gauge steel

