



Chipsmall Limited consists of a professional team with an average of over 10 year of expertise in the distribution of electronic components. Based in Hongkong, we have already established firm and mutual-benefit business relationships with customers from,Europe,America and south Asia,supplying obsolete and hard-to-find components to meet their specific needs.

With the principle of “Quality Parts,Customers Priority,Honest Operation,and Considerate Service”,our business mainly focus on the distribution of electronic components. Line cards we deal with include Microchip,ALPS,ROHM,Xilinx,Pulse,ON,Everlight and Freescale. Main products comprise IC,Modules,Potentiometer,IC Socket,Relay,Connector.Our parts cover such applications as commercial,industrial, and automotives areas.

We are looking forward to setting up business relationship with you and hope to provide you with the best service and solution. Let us make a better world for our industry!



Contact us

Tel: +86-755-8981 8866 Fax: +86-755-8427 6832

Email & Skype: info@chipsmall.com Web: www.chipsmall.com

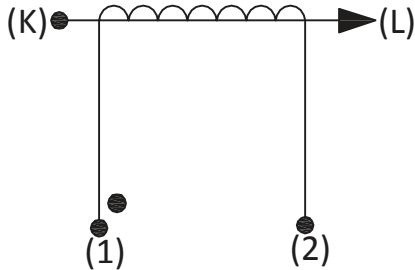
Address: A1208, Overseas Decoration Building, #122 Zhenhua RD., Futian, Shenzhen, China





Product Type	Current Transformer
AMGIS Part Number	CT1075

SCHEMATIC:



ELECTRICAL SPECIFICATION:

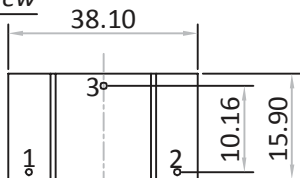
Rated input current = 75Amps
 Primary to Secondary isolation = 2500VAC
 Operating Frequency = 50 / 60 Hz
 Turns Ratio = 1 : 1000
 DC Resistance = 24.00 Ω
 Output Voltage = 7.5V @ 75A / 100Ω, 0.5700W
 I_o @ V_{rms} : 9.26V = 1520μArms
 Ratio Correction factor (RCF*) = 1.001@10% (Multiply current reading by this factor to compensate for transformer losses)

100Ω	500Ω	2000Ω	5000Ω
0.10	0.39	0.57	0.65

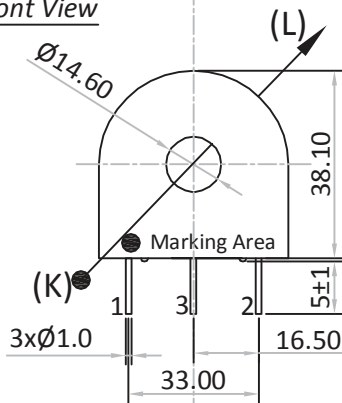
MECHANICAL SPECIFICATION:

OUTPUT RESPONSE vs INPUT CURRENT @ RATED BURDEN :

Pin Side View

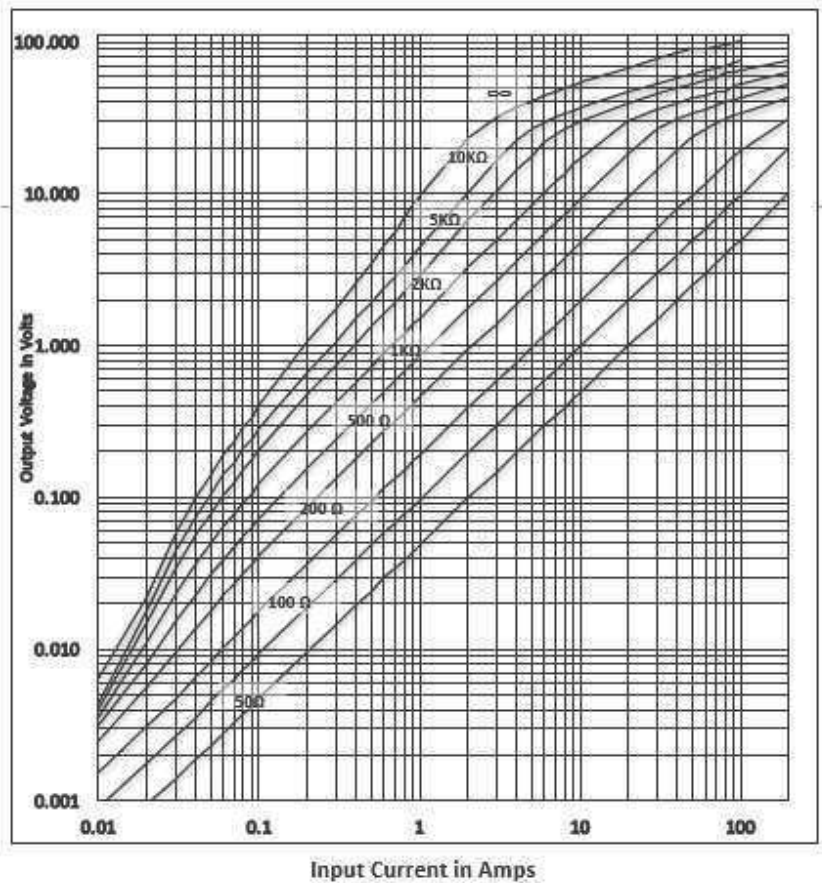


Front View

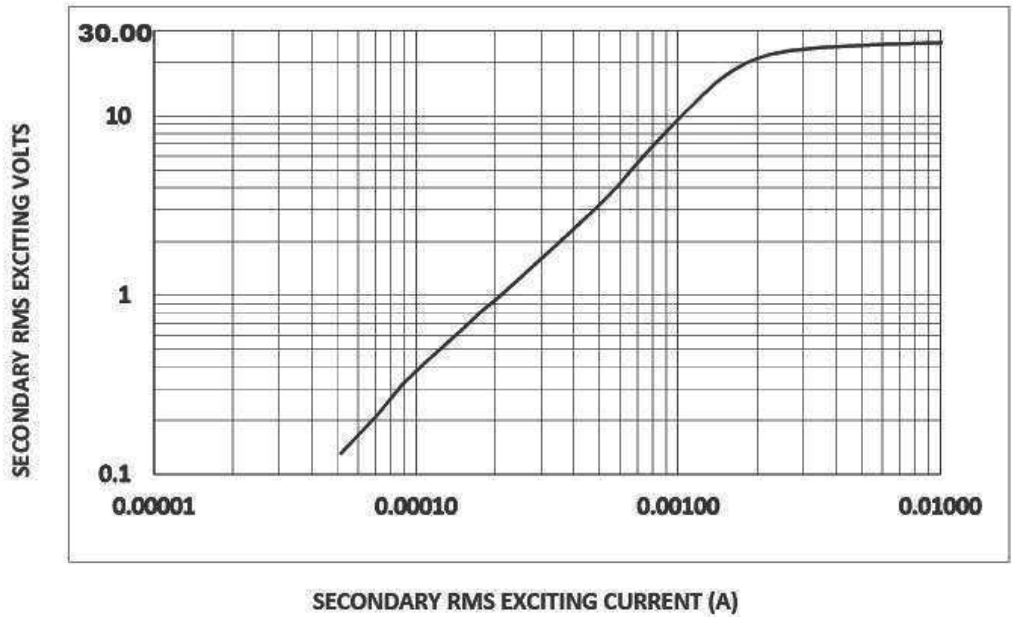


All dimensions are in mm
Linear dimensional tolerance ±0.2mm

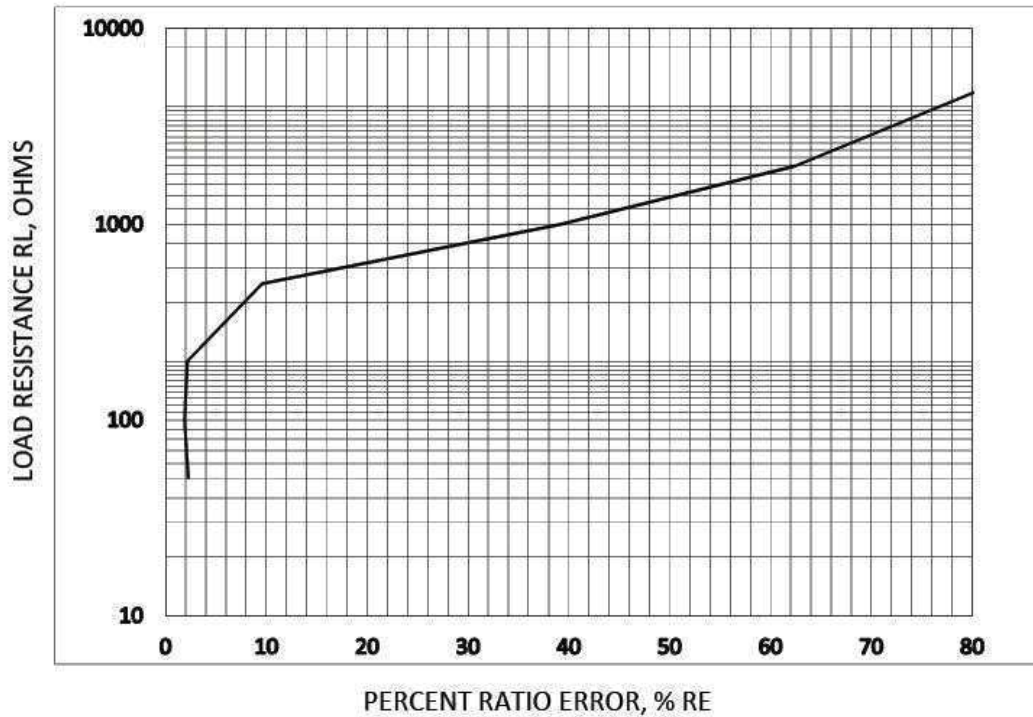
Note : Un-Used pin → #3



TYPICAL EXCITATION CURVE :



RATIO ERROR (%) vs RATED BURDEN @ INPUT CURRENT :



TRAFO WEIGHT:

Approx. Weight = 0.0652 kg / pc

MARKING INFORMATION:

Amgis
CT1075
Yr/Wk code
●
Dot mark for Start pin identification

-----Initial Issue-----	1	0	Balaji. R	18-Nov'2015
Changes	Issue	Rev	Initial	Date