



Chipsmall Limited consists of a professional team with an average of over 10 year of expertise in the distribution of electronic components. Based in Hongkong, we have already established firm and mutual-benefit business relationships with customers from,Europe,America and south Asia,supplying obsolete and hard-to-find components to meet their specific needs.

With the principle of “Quality Parts,Customers Priority,Honest Operation,and Considerate Service”,our business mainly focus on the distribution of electronic components. Line cards we deal with include Microchip,ALPS,ROHM,Xilinx,Pulse,ON,Everlight and Freescale. Main products comprise IC,Modules,Potentiometer,IC Socket,Relay,Connector.Our parts cover such applications as commercial,industrial, and automotives areas.

We are looking forward to setting up business relationship with you and hope to provide you with the best service and solution. Let us make a better world for our industry!



Contact us

Tel: +86-755-8981 8866 Fax: +86-755-8427 6832

Email & Skype: info@chipsmall.com Web: www.chipsmall.com

Address: A1208, Overseas Decoration Building, #122 Zhenhua RD., Futian, Shenzhen, China



THIS IS ISSUED IN STRICT CONFIDENCE THAT IT IS NOT USED AS A BASIS FOR MANUFACTURE OR SALE AND THAT IT IS NOT COPIED, REPRINTED OR DISCLOSED TO A THIRD PARTY EITHER WHOLLY OR IN PART WITHOUT THE PRIOR WRITTEN CONSENT OF CAL TEST ELECTRONICS, INC.

REVISIONS			
REV.	DESCRIPTIONS	DATE	APPROVED
—	CLASS A RELEASED	11/12/07	

- DO-IT-YOURSELF (DIY) Ø4mm RIGHT-ANGLE SHEATH BANANA PLUG, SCREW ATTACHMENT
- SPECIFICATIONS:
INSULATOR BODY: POLYPROPYLENE
PLUG BODY: BRASS, NICKEL PLATED
CONTACT SPRING: BECU, NICKEL PLATED
- RATING:
VOLTAGE: 1000 V CATIII P2 (* Instructions)
REINFORCED INSULATION, CE MARK
CURRENT: 20 A MAX.
INTERNAL RESISTANCE: <10 mΩ
TEMPERATURE: -20° TO +80° C.
- MAXIMUM WIRE SIZES:
CONDUCTOR: Ø .090 (12AWG)
INSULATION: Ø .16 (Ø 4.0)
STRIP LENGTH: .20 (5)

PART NUMBER

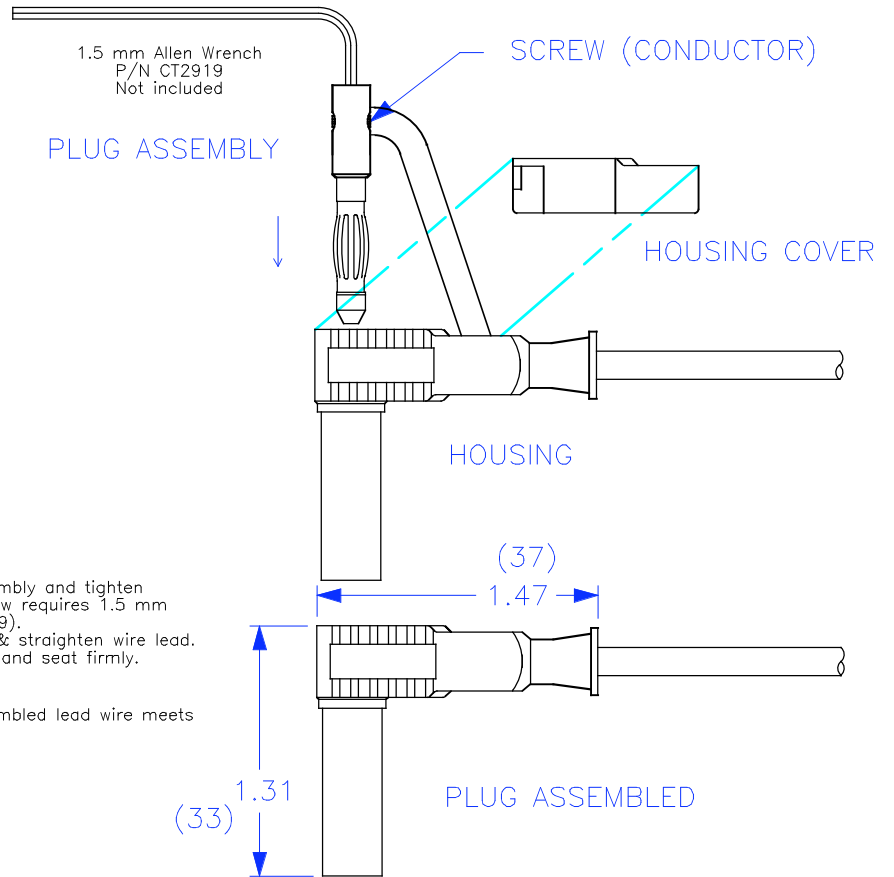
CT3203-#

- COLOR:
- 0 - BLACK
 - 2 - RED
 - 4 - YELLOW
 - 5 - GREEN
 - 6 - BLUE
 - 9 - WHITE

Assembly Instructions:

- Slide wire through Housing.
- Strip wire .20" (5 mm).
- Insert stripped wire into Plug Assembly and tighten Set-Screw (conductor). Set-Screw requires 1.5 mm Allen Wrench (Cal Test P/N CT2919).
- Push Plug Assembly into Housing & straighten wire lead.
- Push Housing Cover onto Housing and seat firmly.
- Plug is assembled.

* IEC specification is met only if assembled lead wire meets requirement and voltage rating.



THIRD ANGLE PROJECTION		UNLESS OTHERWISE SPECIFIED DIMENSIONS ARE IN INCHES TOLERANCES ARE: FRACTIONS DECIMALS ± 1/32 .XX ± .02 DO NOT SCALE DRAWING .XXX ± .005	CONTRACT NO.		Cal Test Electronics 22820 Savi Ranch Parkway Yorba Linda, CA 92887-4610			
			APPROVALS	DATE	TITLE			
NEXT ASSY		MATERIAL	DRAWN	11/12/07	DIY 4mm RIGHT-ANGLE SHEATH PLUG, SCREW ATTACHMENT			
USED ON		FINISH	CHECKED		SIZE	CAGE CODE	DWG. NO.	REV.
APPLICATION			ENGR.		A	43F45	P320300	—
			DESIGN ACTIVITY		SCALE	1:1	SHEET	1 OF 1