



Chipsmall Limited consists of a professional team with an average of over 10 year of expertise in the distribution of electronic components. Based in Hongkong, we have already established firm and mutual-benefit business relationships with customers from,Europe,America and south Asia,supplying obsolete and hard-to-find components to meet their specific needs.

With the principle of “Quality Parts,Customers Priority,Honest Operation,and Considerate Service”,our business mainly focus on the distribution of electronic components. Line cards we deal with include Microchip,ALPS,ROHM,Xilinx,Pulse,ON,Everlight and Freescale. Main products comprise IC,Modules,Potentiometer,IC Socket,Relay,Connector.Our parts cover such applications as commercial,industrial, and automotives areas.

We are looking forward to setting up business relationship with you and hope to provide you with the best service and solution. Let us make a better world for our industry!



## Contact us

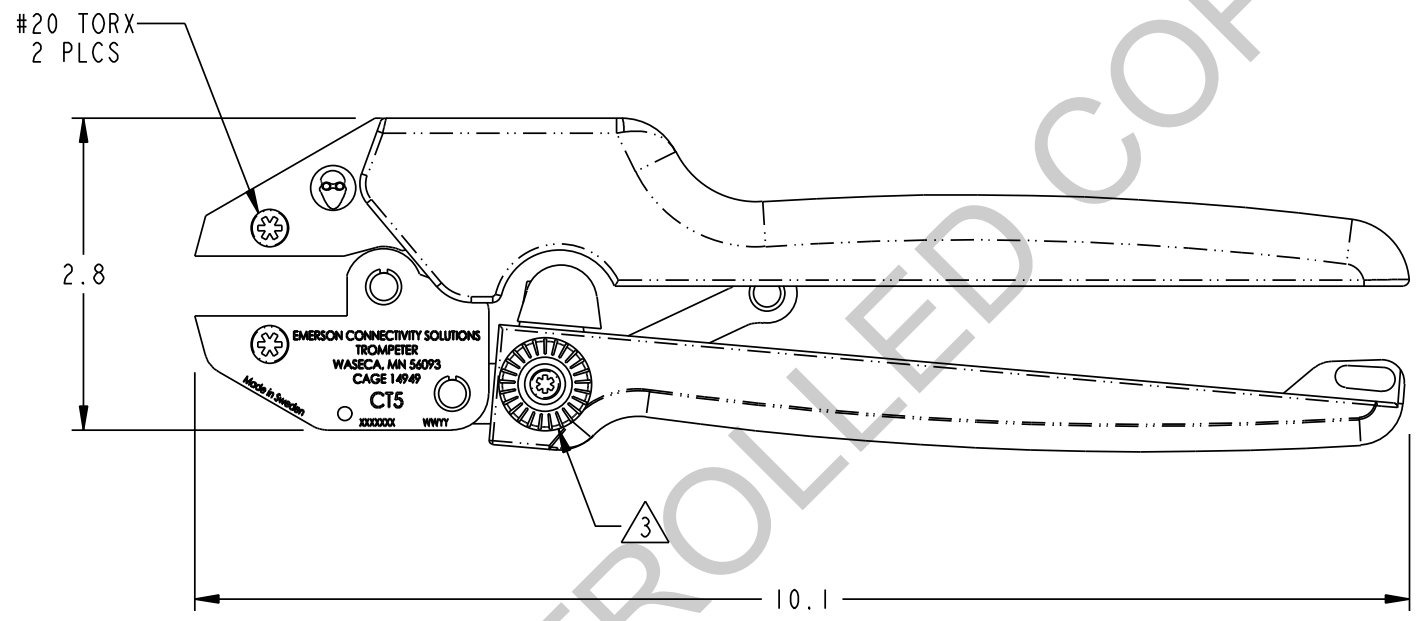
Tel: +86-755-8981 8866 Fax: +86-755-8427 6832

Email & Skype: info@chipsmall.com Web: www.chipsmall.com

Address: A1208, Overseas Decoration Building, #122 Zhenhua RD., Futian, Shenzhen, China



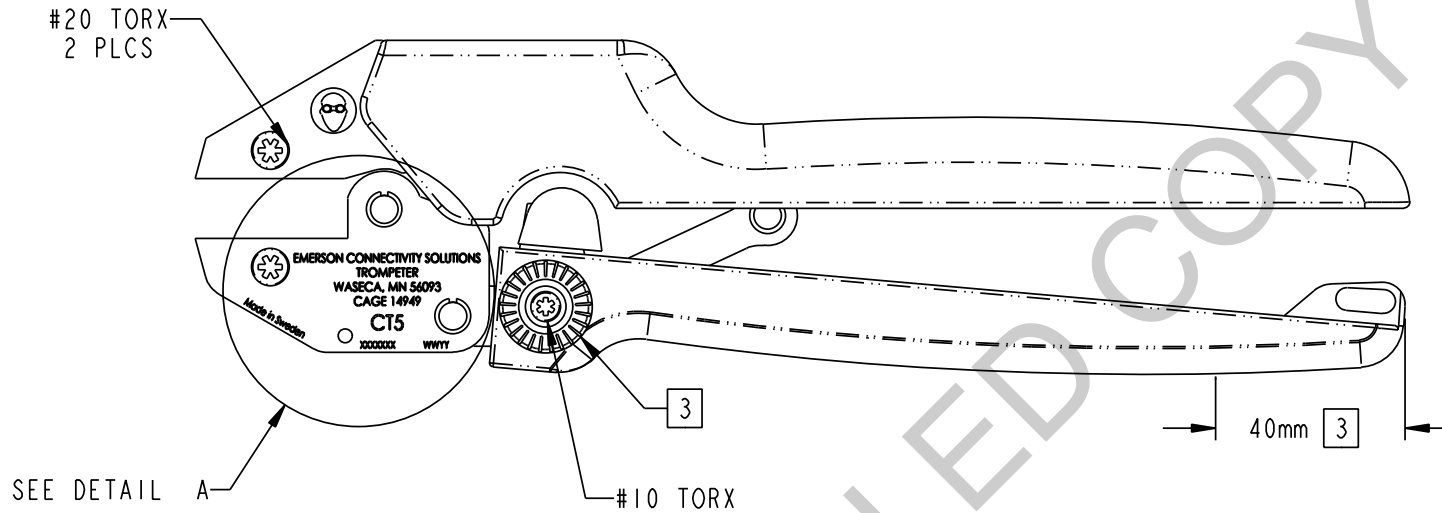
REVISIONS			
REV	DESCRIPTIONS	DATE	APPROVED
B	ECO 53442	6/29/11	C. MONAHAN



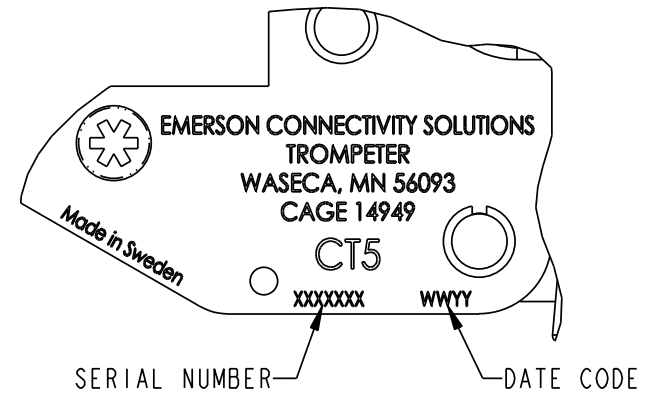
- 4. FOR USE WITH CD3 DIE SETS.
- 3. FACTORY SET TO CALIBRATED CLOSURE FORCE. MARK SETTING AND ETCH FORCE.
- 2. OPEN HANDLE SPAN 8.75 MAX.
- 1. FINISH: HAND GRIPS; BLUE MOLDED TPE (THERMO PLASTIC POLYMER) FRAME ASSEMBLY; BLACK OXIDE COATED CRS WITH LASER ENGRAVED MARKING.

NOTES: UNLESS OTHERWISE SPECIFIED.

INTERPRET DRAWING PER MIL-STD-100. DIMENSIONS ARE IN INCHES AND INCLUDE FINISH THICKNESS UNLESS OTHERWISE SPECIFIED.		TOL: UNLESS SPECIFIED. .XX ± .01 .XXX ± .003 .XXXX ± .0010 ANGLE ± 1° 00' CRITICAL				Cinch Connectivity Solutions 299 Johnson Ave. Ste. 100 Waseca, MN 56093 1-800-247-8256	
DRN C. WALLACE	6/29/11	MATERIAL:			TITLE: <b>CT5 HAND CRIMPING TOOL</b>		
CHR C. MONAHAN	6/30/11	FINISH:					
QUALITY		MANUF		SIZE	CAGE CODE	DRAWING NO.	REV.
APPROVED				<b>A</b>	<b>14949</b>	<b>010-0215</b>	<b>B</b>
SURFACE AREA	PROJ/ FILE NO. 010-0215	DO NOT SCALE DWG	SCALE	5/8	DATE	5/18/11	SHEET 1 OF 2



6. TO BE MARKED WITH "EMERSON CONNECTIVITY SOLUTIONS", "TROMPETER", "WASECA, MN 56093", "CAGE 14949", "CT5", DATE CODE AND SERIAL NUMBER AS SHOWN.
5. HANDLE COLOR TO BE MEDIUM BLUE (PRESSMASTER #NCS 1060-R90B).
4. EACH SHIPMENT TO INCLUDE A CERTIFICATION OF CALIBRATION AND CITE SERIAL NUMBER AND DATE CALIBRATED.
3. MANUFACTURE TO SET TOOL TO ACHIEVE THE HANDLE CLOSURE FORCE, WHEN  $300N \pm 30N$  APPLIED 40MM FROM HANDLE END USING 010-0039-201 DIE SET. AFTER SETTING TOOL, LASER ENGRAVE OPPOSING ARROWS AND "FACTORY SETTING" AND INDICATED.
2. LASER ENGRAVE CHARACTERS IN UPPER CASE GOthic, LOCATED APPROX AS SHOWN, SIZE OF CHARACTERS TO BE DETERMINED AS ARAE PERMITS.
1. PRESSMASTER TOOL 43003957.



DETAIL A  
SCALE 1.25:1

SIZE	CAGE CODE	DRAWING NO.	REV.
A	14949	010-0215	B
SCALE	SHEET		
5/8	2 OF 2		