



Chipsmall Limited consists of a professional team with an average of over 10 year of expertise in the distribution of electronic components. Based in Hongkong, we have already established firm and mutual-benefit business relationships with customers from,Europe,America and south Asia,supplying obsolete and hard-to-find components to meet their specific needs.

With the principle of “Quality Parts,Customers Priority,Honest Operation,and Considerate Service”,our business mainly focus on the distribution of electronic components. Line cards we deal with include Microchip,ALPS,ROHM,Xilinx,Pulse,ON,Everlight and Freescale. Main products comprise IC,Modules,Potentiometer,IC Socket,Relay,Connector.Our parts cover such applications as commercial,industrial, and automotives areas.

We are looking forward to setting up business relationship with you and hope to provide you with the best service and solution. Let us make a better world for our industry!



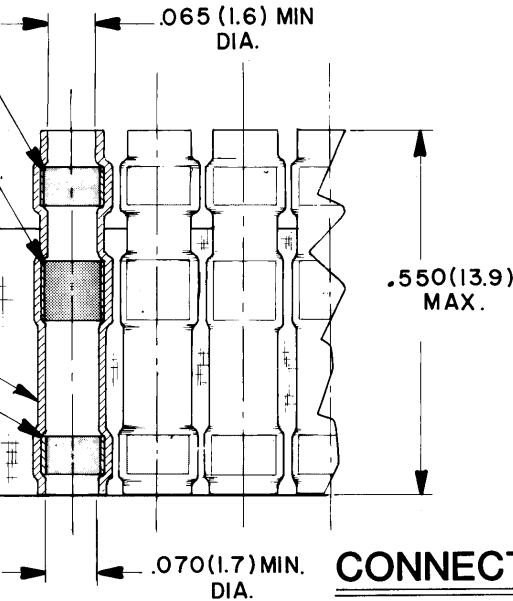
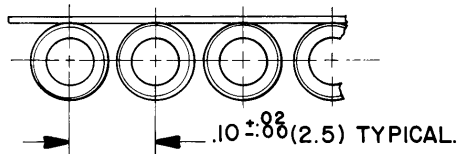
Contact us

Tel: +86-755-8981 8866 Fax: +86-755-8427 6832

Email & Skype: info@chipsmall.com Web: www.chipsmall.com

Address: A1208, Overseas Decoration Building, #122 Zhenhua RD., Futian, Shenzhen, China





MELTABLE INSERT (WIRE END) (PINK)

SOLDER PREFORM (WITH FLUX)

CARRIER STRIP

INSULATION SLEEVE

MELTABLE INSERT (WAFER CONNECTOR END) (YELLOW)

REVISIONS				
ZONE	LTR	DESCRIPTION	DATE	APPROVED
	B	CHANGE PER DCO	06/175	1/24/80 <i>Blair</i>

If this document is printed it becomes uncontrolled.
Check with the web for latest revision.

NOTES:

- MATERIALS
 - I-A INSULATION SLEEVE; HEAT SHRINKABLE, RADIATION CROSSLINKED MODIFIED POLYVINYLIDENE FLUORIDE, TRANSPARENT BLUE.
 - I-B SOLDER PREFORM; SOLDER PREFORM WITH FLUX TYPE: Sb5 SRAP PER QQ-S-571.
 - I-C MELTABLE INSERTS; LOW OUTGASSING IMMERSION RESISTANT THERMOPLASTIC
 - I-D CARRIER STRIP; ADHESIVE COATED HIGH TEMPERATURE TAPE.
2. A CTA-0027 ASSEMBLY CONSISTS OF 20 EACH CTA-0025 SOLDER SLEEVE WIRE TERMINATORS.
3. THESE SLEEVES ARE DESIGNED TO ATTACH "20 THROUGH" "26 GAGE TIN PLATED OR SILVER PLATED CONDUCTORS TO TERMINALS OF A **Raychem** MTC100 SERIES WAFER.

© Raychem Corporation 1979

CONNECTOR SPECIFICATION CONTROL DRAWING

UNLESS OTHERWISE SPECIFIED DIMENSIONS ARE IN INCHES BRACKETED DIMENSIONS () ARE METRIC AND TOLERANCES ARE: .XXX: ± (M. M.) .XX: ± (M. M.) Δ: ±	DRAWN	SA. LOPEZ	5/19/79
	CHECKED	<i>Roy</i>	
	APPROVED	<i>B. Yates</i>	5/19/79
	APPROVED	<i>E. Steuler</i>	6/5/79
	APPROVED	<i>ffo</i>	6/11/79
	PROJECT	6448 - 7055	

Raychem			RAYCHEM CORPORATION 300 CONSTITUTION DRIVE MENLO PARK, CALIFORNIA 94025
TITLE SOLDER PAK ASSEMBLY, DOUBLE MELTABLE INSERT - 20 SLEEVES TEMP RATING 150°C(Sb5) MTC100 SERIES			
SIZE	CODE IDENT	DWG. NO.	
B	NO. 06090	CTA-0027	
WEIGHT		SHEET 1 OF 1	

DO NOT SCALE THIS DRAWING