



Chipsmall Limited consists of a professional team with an average of over 10 year of expertise in the distribution of electronic components. Based in Hongkong, we have already established firm and mutual-benefit business relationships with customers from,Europe,America and south Asia,supplying obsolete and hard-to-find components to meet their specific needs.

With the principle of “Quality Parts,Customers Priority,Honest Operation,and Considerate Service”,our business mainly focus on the distribution of electronic components. Line cards we deal with include Microchip,ALPS,ROHM,Xilinx,Pulse,ON,Everlight and Freescale. Main products comprise IC,Modules,Potentiometer,IC Socket,Relay,Connector.Our parts cover such applications as commercial,industrial, and automotives areas.

We are looking forward to setting up business relationship with you and hope to provide you with the best service and solution. Let us make a better world for our industry!



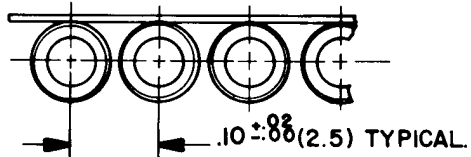
Contact us

Tel: +86-755-8981 8866 Fax: +86-755-8427 6832

Email & Skype: info@chipsmall.com Web: www.chipsmall.com

Address: A1208, Overseas Decoration Building, #122 Zhenhua RD., Futian, Shenzhen, China





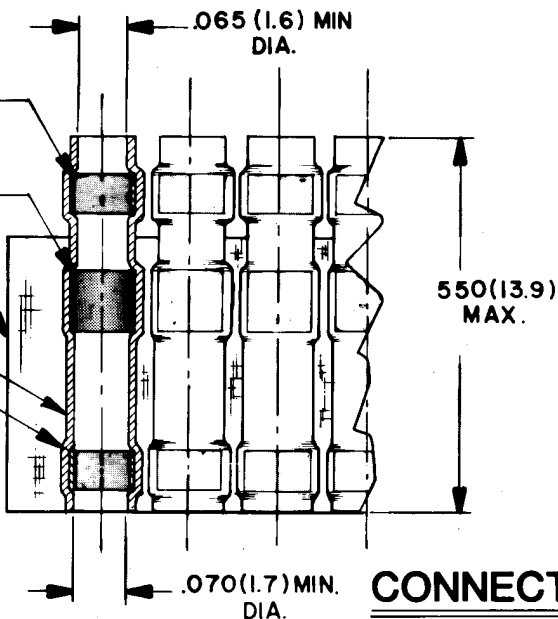
MELTABLE INSERT
(WIRE END BLUE)

SOLDER PREFORM
(WITH FLUX)

CARRIER STRIP

INSULATION SLEEVE

MELTABLE INSERT
(WAFER CONNECTOR END YELLOW)



NOTES:

1. MATERIALS:

- I-A INSULATION SLEEVE; HEAT SHRINKABLE, RADIATION CROSSLINKED MODIFIED POLYVINYLIDENE FLUORIDE, TRANSPARENT BLUE.
- I-B SOLDER PREFORM; SOLDER PREFORM WITH FLUX TYPE: Sn63 RMAP PER QQ-S-571.
- I-C MELTABLE INSERTS; LOW OUTGASSING IMMERSION RESISTANT THERMOPLASTIC.
- I-D CARRIER STRIP; ADHESIVE COATED HIGH TEMPERATURE TAPE.

2. A CTA-0036 ASSEMBLY CONSISTS OF 20 EACH CTA-0034 SOLDER SLEEVE WIRE TERMINATORS.

3. THESE SLEEVES ARE DESIGNED TO ATTACH TO "20 THROUGH "26 GAGE TIN PLATED OR SILVER PLATED CONDUCTORS TO TERMINALS OF A **Raychem** MTC100 SERIES WAFER.

CONNECTOR SPECIFICATION CONTROL DRAWING

UNLESS OTHERWISE SPECIFIED DIMENSIONS ARE IN INCHES BRACKETED DIMENSIONS () ARE METRIC AND TOLERANCES ARE: .XXX: ± _____ () .XX: ± _____ () Δ: ± _____	DRAWN	SA. LOPEZ	5/19/79
	CHECKED	JB	9-13-79
	APPROVED	<i>J. Plain</i>	9-13-79
	APPROVED	<i>BY ab</i>	10-24-79
	APPROVED		
PROJECT	6448 - 7055		

Raychem		RAYCHEM CORPORATION 300 CONSTITUTION DRIVE MENLO PARK, CALIFORNIA 94025	
		TITLE SOLDER PAK ASSEMBLY DOUBLE SEAL, 100 CENTERS - 20 SLEEVES TEMP RATING 125°C (Sn63) MTC100 SERIES	
SIZE	CODE IDENT	DWG. NO.	
B	NO. 06090	CTA-0036	
PROJECT		WEIGHT	SHEET 1 OF 1

REVISIONS				
ZONE	LTR	DESCRIPTION	DATE	APPROVED
	N/C	INITIAL RELEASE DCO# 60805	10-26-79	BY ab

© 1979 RAYCHEM CORPORATION
If this document prints in black, it is unclassified.
Check with the web for latest revision.

DO NOT SCALE THIS DRAWING