



Chipsmall Limited consists of a professional team with an average of over 10 year of expertise in the distribution of electronic components. Based in Hongkong, we have already established firm and mutual-benefit business relationships with customers from,Europe,America and south Asia,supplying obsolete and hard-to-find components to meet their specific needs.

With the principle of “Quality Parts,Customers Priority,Honest Operation,and Considerate Service”,our business mainly focus on the distribution of electronic components. Line cards we deal with include Microchip,ALPS,ROHM,Xilinx,Pulse,ON,Everlight and Freescale. Main products comprise IC,Modules,Potentiometer,IC Socket,Relay,Connector.Our parts cover such applications as commercial,industrial, and automotives areas.

We are looking forward to setting up business relationship with you and hope to provide you with the best service and solution. Let us make a better world for our industry!



Contact us

Tel: +86-755-8981 8866 Fax: +86-755-8427 6832

Email & Skype: info@chipsmall.com Web: www.chipsmall.com

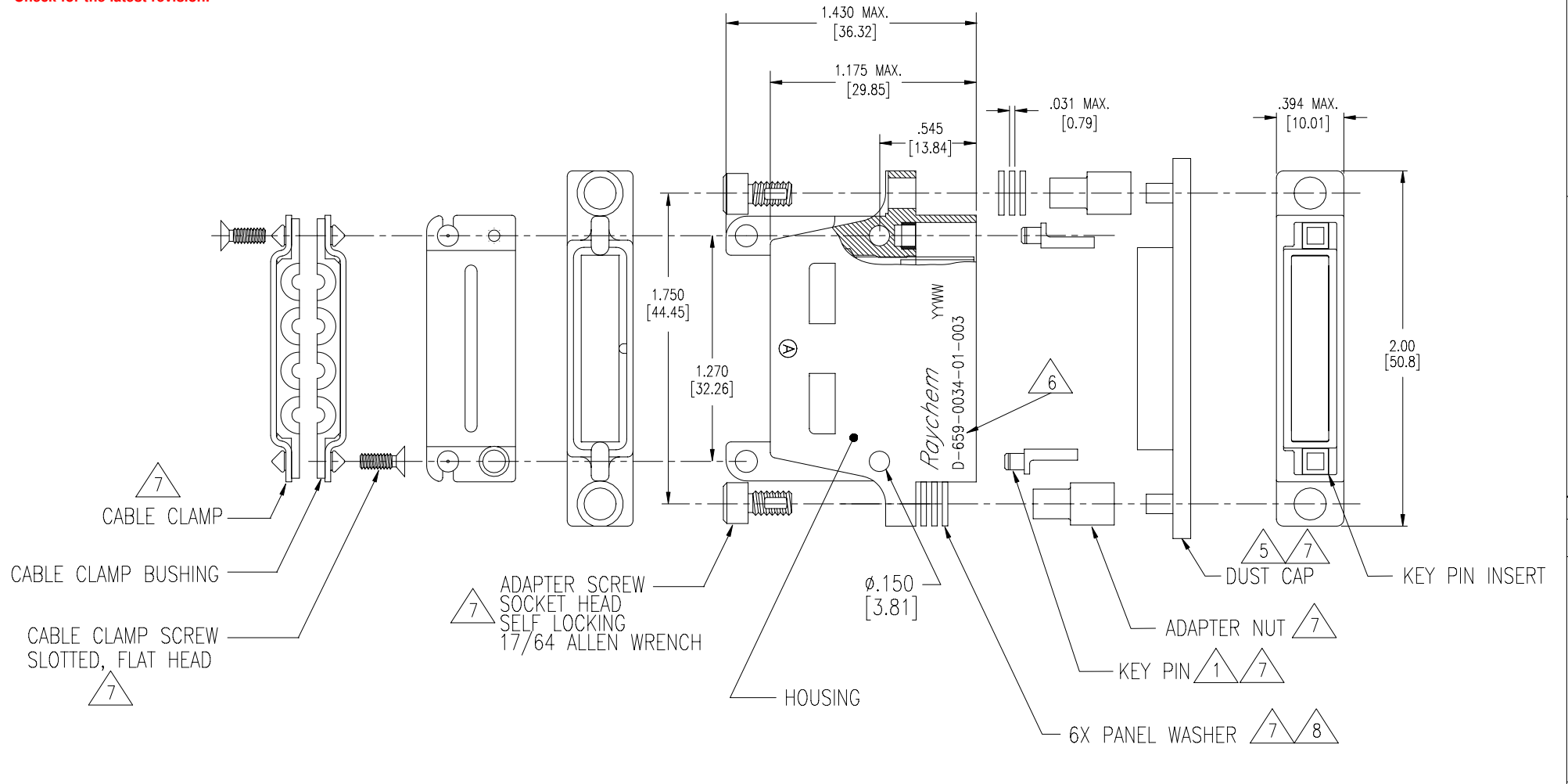
Address: A1208, Overseas Decoration Building, #122 Zhenhua RD., Futian, Shenzhen, China



TYCO ELECTRONICS RESERVES THE RIGHT TO AMEND THIS DRAWING AT ANY TIME.
 USERS SHOULD EVALUATE THE SUITABILITY OF THE PRODUCT FOR THEIR APPLICATION.

REVISIONS			
LTR	DESCRIPTION	DATE	APPROVED
A	INITIAL RELEASE PER DCR# T-32027	OCT/3/03	M.HIGGY

If this document is printed it becomes uncontrolled.
 Check for the latest revision.



SPECIFICATION CONTROL DRAWING

UNLESS OTHERWISE SPECIFIED DIMENSIONS ARE IN INCHES. METRIC DIMENSIONS ARE IN BRACKETS. DECIMALS .XXX ±.005 [.13mm] .XX ±.02 [.51mm] ANGLE ± X° WEIGHT lbs. [g] MAX.	DRAWN ZS. ORBAN CHECKED DATE September/9/03	DATE September/9/03	tyco Electronics	TYCO ELECTRONICS 300 Constitution Drive Menlo Park, CA. 94025 USA	Raychem	
	APPROVED M.HIGGY CAD NAME T32027a.DWG	DATE September/9/03				TITLE 1 INCH SUB-ASSEMBLY RECEPTACLE SHELL, CADMIUM PLATED MTCR SERIES
	THIRD ANGLE PROJECTION		SIZE C	CAGE CODE: 06090	DWG. NO. D-659-0034-01-003	REV A
	DO NOT SCALE THIS DRAWING SCALE NONE SHEET 1 OF 2					

DWG NO. D-659-0034-01-003 SHEET 1

NOTES:

1 KEYING PIN CODE DOES NOT FORM A PART OF RAYCHEM PART NUMBERING SYSTEM AND SHOULD BE OMITTED WHEN ORDERING. FOR MOUNTING / MATING AND KEYING INFORMATION, SEE RAYCHEM SPECIFICATION D-652-0004.

2. CONNECTOR SUB-ASSEMBLY SUPPLIED IN KIT FORM AND SHALL BE ASSEMBLED BY USER. THE COMPLETED ASSEMBLY DESIGNED TO MEET APPLICABLE REQUIREMENTS OF SPECIFICATION C-6115.

3. MATERIAL:

- A) SHELL ALUMINUM ALLOY PER QQ-A-591
- B) ADAPTOR SCREW STAINLESS STEEL, 300 SERIES PER QQ-S-763
- C) ADAPTOR NUT STAINLESS STEEL, 300 SERIES PER QQ-S-763
- D) PANEL WASHER 300 SERIES PER ASTM A666 CONDITION 1/2 HARD
- E) KEYING PIN HIGH GRADE POLYARYLENE THERMOPLASTIC, MOLDED
- F) KEY PINS INSERT HIGH GRADE POLYARYLENE THERMOPLASTIC, MOLDED
- G) CABLE CLAMP STAINLESS STEEL, 300 SERIES PER QQ-S-763
- H) CABLE CLAMP BUSHING 70 SHORE FLUROSILICONE WITH OIL RESISTANCE PER MIL-R-25988
- I) CABLE CLAMP SCREW STAINLESS STEEL, 300 SERIES PER QQ-S-763
- J) DUST CAP POLYETHYLENE LOW DENSITY PER L-P-390, COLOR RED

4. FINISH:

- A) SHELL CADMIUM PLATED PER SAE-AMS-QQ-P-416
- B) ADAPTOR SCREW CADMIUM PLATED PER SAE-AMS-QQ-P-416
- C) ADAPTOR NUT CADMIUM PLATED PER SAE-AMS-QQ-P-416
- D) PANEL WASHER CADMIUM PLATED PER SAE-AMS-QQ-P-416
- E) CABLE CLAMP CADMIUM PLATED PER SAE-AMS-QQ-P-416
- F) CABLE CLAMP SCREW CADMIUM PLATED PER SAE-AMS-QQ-P-416

5 DUST CAP SUPPLIED WITH EACH RECEPTACLE SHELL.

6 APPROPRIATE PART NUMBER AND DATE CODE ARE STAMPED APPROXIMATELY AS SHOWN.

7 THESE ITEMS ARE SUPPLIED UNASSEMBLED.

8 THIS RECEPTACLE IS REAR PANEL MOUNTED BY REMOVING AS MANY PANEL WASHERS AS REQUIRED TO ACCOMMODATE THE THICKNESS OF THE PANEL BEING USED. (SEE TABLE I)

9. CONNECTOR COMPONENTS AND ACCESSORIES ARE INDIVIDUALLY BAGGED AND LABELED.

TABLE I	
PANEL THICKNESS	NUMBER OF PANEL WASHERS FOR EACH FASTENER
0.031/0.036 [0.8]/[0.9]	2
0.062/0.067 [1.5]/[1.7]	1
0.093/0.097 [2.3]/[2.4]	0

If this document is printed it becomes uncontrolled. Check for the latest revision.

DWG. NO. D-659-0034-01-003	REV A
CAD FILE No.: T32027b.DWG SHEET 2 OF 2	