



Chipsmall Limited consists of a professional team with an average of over 10 year of expertise in the distribution of electronic components. Based in Hongkong, we have already established firm and mutual-benefit business relationships with customers from,Europe,America and south Asia,supplying obsolete and hard-to-find components to meet their specific needs.

With the principle of “Quality Parts,Customers Priority,Honest Operation,and Considerate Service”,our business mainly focus on the distribution of electronic components. Line cards we deal with include Microchip,ALPS,ROHM,Xilinx,Pulse,ON,Everlight and Freescale. Main products comprise IC,Modules,Potentiometer,IC Socket,Relay,Connector.Our parts cover such applications as commercial,industrial, and automotives areas.

We are looking forward to setting up business relationship with you and hope to provide you with the best service and solution. Let us make a better world for our industry!



Contact us

Tel: +86-755-8981 8866 Fax: +86-755-8427 6832

Email & Skype: info@chipsmall.com Web: www.chipsmall.com

Address: A1208, Overseas Decoration Building, #122 Zhenhua RD., Futian, Shenzhen, China



THIS DRAWING IS UNPUBLISHED.

RELEASED FOR PUBLICATION

-,-



COPYRIGHT - By -

ALL RIGHTS RESERVED.

LOC

DIST

REVISIONS

P

LTR

DESCRIPTION

DATE

DWN

APVD

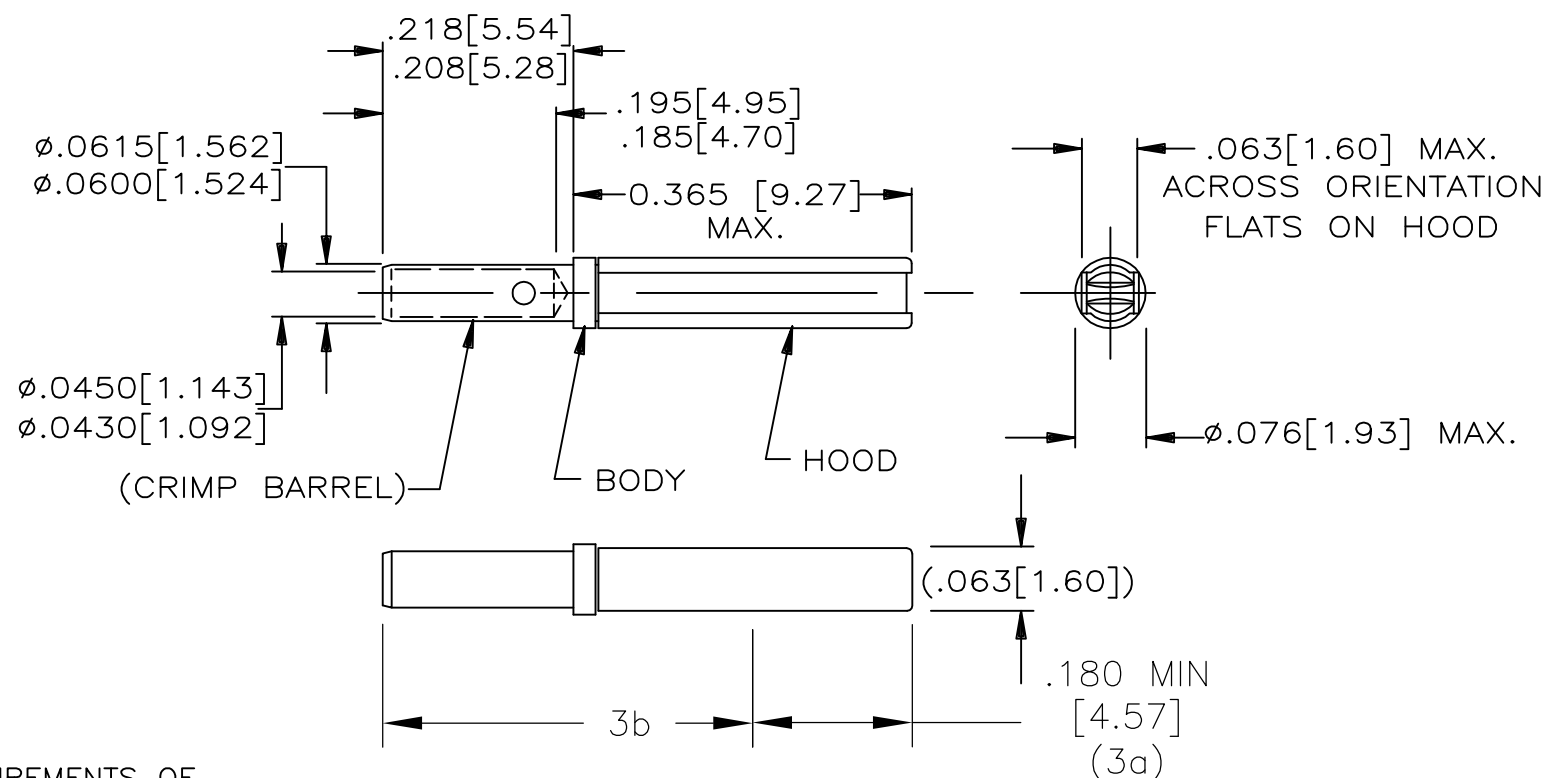
H

REV PER ECO 14-015585

12-23-14

CT

KH



1. THIS CONTACT IS DESIGNED TO MEET THE APPLICABLE REQUIREMENTS OF RAYCHEM SPECIFICATION C-6114 AND C-6115.
2. MATERIAL:
BODY: COPPER ALLOY CDA C19160 (BOILLAT C97), TESTED PER ASTM B 249.
HOOD: STAINLESS STEEL 305, PER ASTM A 240.
3. FINISH:
BODY: GOLD PLATE PER ASTM B 488, CLASS 1
3a: GOLD THICKNESS: 50-100 μ in
3b: GOLD THICKNESS: 10 μ in MIN
HOOD: PASSIVATED PER SAE AMS 2700.
4. CRIMP TOOL RECOMMENDATION:
A: TOOL NUMBER M22520/2-01
B: POSITIONER NUMBER CE-16-06000
5. THIS CONTACT MATES WITH TYCO PIN CONTACT NUMBER CTA-0166
6. CRIMP BARREL DESIGNED TO ACCOMMODATE A WIRE RANGE OF AWG 20-26
7. THESE CONTACTS ARE USED IN TYCO INSERTS MTCP-X22-XXS. SEE DRAWING D-659-0097 FOR INSERT CONFIGURATION.
8. RECOMMENDED WIRE STRIP LENGTH: 0.195-0.215 [4.95-5.46].

THIS DRAWING IS A CONTROLLED DOCUMENT.

DWN C.C.THOMAS 23DEC2014

CHK K.HOGAN 12-23-14

APVD K.HOGAN 12-23-14

PRODUCT SPEC

APPLICATION SPEC

WEIGHT 0.192 GR MAX

CUSTOMER DRAWING

TE Connectivity

NAME

CONTACT, SOCKET, CRIMP,
SIZE 22-20, MTC SERIES

SIZE

CAGE CODE

DRAWING NO

RESTRICTED TO

A3

06090

C-CTA-0165

SCALE NTS

SHEET

1 OF 1

REV

H