



Chipsmall Limited consists of a professional team with an average of over 10 year of expertise in the distribution of electronic components. Based in Hongkong, we have already established firm and mutual-benefit business relationships with customers from,Europe,America and south Asia,supplying obsolete and hard-to-find components to meet their specific needs.

With the principle of “Quality Parts,Customers Priority,Honest Operation,and Considerate Service”,our business mainly focus on the distribution of electronic components. Line cards we deal with include Microchip,ALPS,ROHM,Xilinx,Pulse,ON,Everlight and Freescale. Main products comprise IC,Modules,Potentiometer,IC Socket,Relay,Connector.Our parts cover such applications as commercial,industrial, and automotives areas.

We are looking forward to setting up business relationship with you and hope to provide you with the best service and solution. Let us make a better world for our industry!



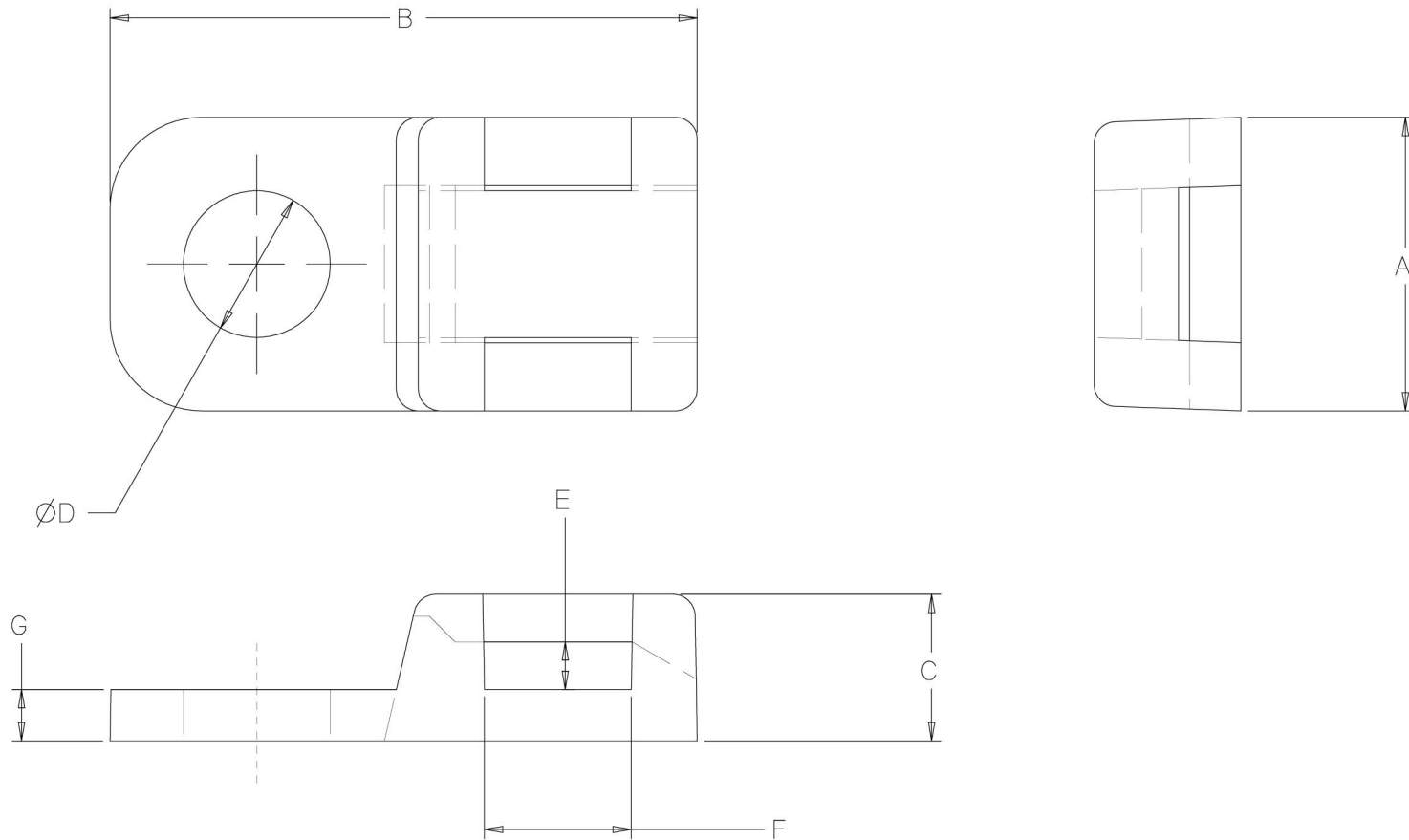
Contact us

Tel: +86-755-8981 8866 Fax: +86-755-8427 6832

Email & Skype: info@chipsmall.com Web: www.chipsmall.com

Address: A1208, Overseas Decoration Building, #122 Zhenhua RD., Futian, Shenzhen, China





G	F	E	D	C	B	A	CABLE TIE SERIES	MOUNTING	TYTON P/N
.070 [1.78]	.197 [5.00]	.065 [1.65]	.171 [4.34]	.200 [5.08]	.803 [20.40]	.402 [10.21]	T18 THRU T50	#8 SCREW	CTAM1
.070 [1.78]	.199 [5.05]	.066 [1.68]	.203 [5.16]	.201 [5.10]	.804 [20.42]	.403 [10.24]	T18 THRU T50	#10 SCREW	CTAM2

INVENTORS

HellermannTyton

ALL PROPRIETARY RIGHTS IN THE SUBJECT MATTER SHOWN ON THIS DRAWING ARE EXCLUSIVE PROPERTY OF HELLERMANN TYTON

name	date	city, state

REVISION

level	A
by	SSL
date	1/28/98
ECN #	000452
part level	A

DIMENSIONS

.XXXX=
 .XXX= .010/[.25]
 .XX=
 .X=
 ∟=
 unless otherwise specified
 units inches/[mm]

PART

number	SEE CHART	phase	PRODUCTION
name	CABLE TIE ANCHOR MOUNT		
material	NYLON 6/6		

DRAWING

FORMAT	AH version J	CAD	PD	scale	4X
computer file number	MT\SER\2009001A	previous number			
drawn	SSL	checked		approved	
date	1/28/98				
type	SERIES	sheet	1 of 1		
number	MT2009001SER				