



Chipsmall Limited consists of a professional team with an average of over 10 year of expertise in the distribution of electronic components. Based in Hongkong, we have already established firm and mutual-benefit business relationships with customers from,Europe,America and south Asia,supplying obsolete and hard-to-find components to meet their specific needs.

With the principle of "Quality Parts,Customers Priority,Honest Operation,and Considerate Service",our business mainly focus on the distribution of electronic components. Line cards we deal with include Microchip,ALPS,ROHM,Xilinx,Pulse,ON,Everlight and Freescale. Main products comprise IC,Modules,Potentiometer,IC Socket,Relay,Connector.Our parts cover such applications as commercial,industrial, and automotives areas.

We are looking forward to setting up business relationship with you and hope to provide you with the best service and solution. Let us make a better world for our industry!



## Contact us

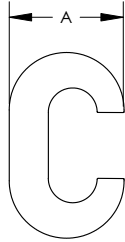
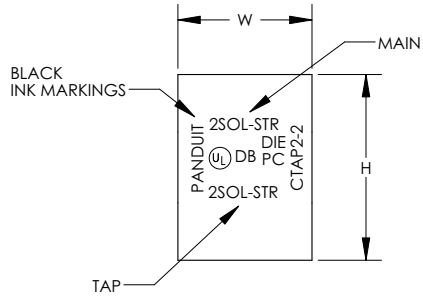
Tel: +86-755-8981 8866 Fax: +86-755-8427 6832

Email & Skype: info@chipsmall.com Web: www.chipsmall.com

Address: A1208, Overseas Decoration Building, #122 Zhenhua RD., Futian, Shenzhen, China



THIS COPY IS PROVIDED ON A RESTRICTED BASIS AND IS NOT TO BE USED IN ANY WAY DETRIMENTAL TO THE INTERESTS OF PANDUIT CORP.



PANDUIT PART NUMBER	COPPER CONDUCTOR SIZE		DIMENSIONS			TAP COVER P/N (REF)	PANDUIT CRIMP TOOL PART NUMBERS		WIRE STRIP LENGTH (+1/32/-0)
	MAIN	TAP	W	A	H		CT-920, CT-920CH, CT-2920, CT-930, CT-930CH, CT-940CH*, CT-2940*	CT-2001	
CTAP4-8-L	#6-#4 SOL OR STR	#8 SOL OR STR	0.63	0.46	0.73	CVR6-1	CD920-BG PBG (1)	CD-2001-BG PBG (1)	3/4
CTAP4-6-L	#6 STR, #4 SOL OR STR	#6 SOL OR STR	0.63	0.48	0.73	CVR6-1	CD920-BG PBG (1)	CD-2001-BG PBG (1)	3/4
CTAP4-4-L	#4 SOL OR STR	#4 STR	0.63	0.46	0.81	CVR6-1	CD920-BG PBG (1)	CD-2001-BG PBG (1)	3/4
CTAP2-4-Q	#2 SOL OR STR	#8-#4 SOL OR STR	0.76	0.60	0.96	CVR2-1	CD920-C PC (1)	CD-2001-C PC (2)	7/8
CTAP2-2-X	#2 SOL OR STR	#2 SOL OR STR	0.75	0.60	1.05	CVR2-1	CD920-C PC (1)	CD-2001-C PC (2)	7/8
CTAP2/0-2-X	#1/0 - #2/0 STR	#8 - #2 SOL OR STR	0.93	0.80	1.32	CVR2-1	CD920-O PO (1)	-----	1-1/16
CTAP2/0-2/0-X	#1/0 - #2/0 STR	#1/0 - #2/0 STR	0.93	0.80	1.37	CVR250-1	CD920-O PO (1)	-----	1-1/16
CTAP4/0-2-X	#3/0 - #4/0 STR	#6 - #2 SOL OR STR	1.08	0.94	1.66	CVR500-1	CD920-D3 PD3 (1)	-----	1-1/4
CTAP4/0-2/0-X	#3/0 - #4/0 STR	#1/0 - #2/0 STR	1.08	1.00	1.57	CVR500-1	CD920-D3 PD3 (1)	-----	1-1/4
CTAP4/0-4/0-X	#3/0 - #4/0 STR	#3/0 - #4/0 STR	1.08	1.00	1.57	CVR500-1	CD920-D3 PD3 (1)	-----	1-1/4

NOTES:

- FOR COPPER TO COPPER CONNECTIONS ONLY.
- UL LISTED PER UL 486A FOR POWER CONNECTOR APPLICATIONS UP TO 35KV.
- UL LISTED PER UL 467 FOR GROUNDING AND BONDING AND FOR SUITABLE DIRECT BURIAL IN EARTH OR CONCRETE.
- UL TEMPERATURE RATING 90 °C
- UL FLAMMABILITY RATING FOR DVR COVERS IS V-0.
- CVR COVERS ARE NOTE UL LISTED WITH CTAP CONNECTORS.
- MATERIAL: HIGH CONDUCTIVITY COPPER
- PACKAGING QTY CODES: -L = 50  
-Q=25  
-X=10
- CT-940CH AND CT-2940 REQUIRE CD-940-DA ADAPTER FOR CD-920 DIES



06	4/10	JHNU	JHNU	REVISED DWG NUMBER: 10N002BA-NC WAS C41220 CONVERTED DWG TO SOLIDWORKS REVISED UL LABEL	10N002BA-NC		FLD
05	10/09	JESH	JESH	UPDATED TABLE TAP COVER P/N REF. TAPC COVERS ARE REPLACED WITH CVR COVERS			
				ADDED NOTES			
04	2/02	SAB		ADDED DB TO THE STAMP, ADDED NOTES 6 & 7	09827	LM	JAC
03	1/02	SAB	JAC	ADDED WIRE CONNECTOR UNDER THE UL SYMBOL	09788	LM	JAC
02	11/01	BDK	RLS	REMOVED CTAP2-4-TL, CTAP2-2-TL, ADDED TOOLING INFORMATION AND UPDATED TABLE.	-----	----	----
--	-----	-----	-----	UPDATED THE NOTES, AND ADDED BLACK INK MARKINGS LEADER.	09328		JAC
01	5/01	ED	SKB	REVISED TABLE TO REFLECT PRODUCT EXPANSION	09354		JAC
00	9/97	TM	WJB	RELEASED	06270	DH	LA
REV	DATE	BY	CHK	DESCRIPTION	ECN	PM	CUST

**PANDUIT CORP. TINLEY PARK, ILLINOIS**

CTAP COPPER COMPRESSION TAPS  
CUSTOMER DRAWING

UNLESS OTHERWISE SPECIFIED  
DIMENSIONAL TOLERANCES ARE:  
(.X) ± (XXX) ±  
(.XX) ± ANGLES ±

UNLESS OTHERWISE SPECIFIED,  
ALL DIMENSIONS ARE GIVEN IN  
INCHES, THIRD ANGLE PROJECTION

DRAWN BY TSM

MAT'L:

SCALE NONE

DATE 9/97

DRAWING NO / CAD FILE

CHK'D WJB

10N002BA-NC

DWG B SIZE