



Chipsmall Limited consists of a professional team with an average of over 10 year of expertise in the distribution of electronic components. Based in Hongkong, we have already established firm and mutual-benefit business relationships with customers from,Europe,America and south Asia,supplying obsolete and hard-to-find components to meet their specific needs.

With the principle of “Quality Parts,Customers Priority,Honest Operation,and Considerate Service”,our business mainly focus on the distribution of electronic components. Line cards we deal with include Microchip,ALPS,ROHM,Xilinx,Pulse,ON,Everlight and Freescale. Main products comprise IC,Modules,Potentiometer,IC Socket,Relay,Connector.Our parts cover such applications as commercial,industrial, and automotives areas.

We are looking forward to setting up business relationship with you and hope to provide you with the best service and solution. Let us make a better world for our industry!



## Contact us

Tel: +86-755-8981 8866 Fax: +86-755-8427 6832

Email & Skype: info@chipsmall.com Web: www.chipsmall.com

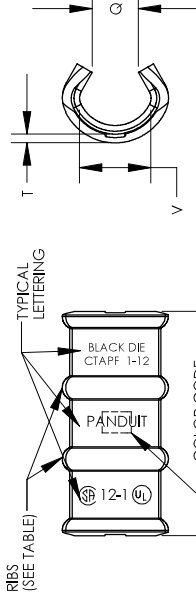
Address: A1208, Overseas Decoration Building, #122 Zhenhua RD., Futian, Shenzhen, China



THIS COPY IS PROVIDED ON A RESTRICTED BASIS AND IS NOT TO BE USED IN ANY WAY DETRIMENTAL TO THE INTERESTS OF PANDUIT CORP.

CATALOG NUMBER	STRANDED COPPER CONDUCTOR SIZE (AWG)		NO. RIBS	DIMENSIONS - IN (mm)				COLOR CODE	WIRE STRIP LENGTH	INSTALLATION TOOLING PANDUIT DIE PART NO. DIE SET COLOR & INDEX NO. NO. OF CRIMPS ( )	
	RUN	TAP		A	Q	T (MATERIAL THICKNESS)	V			CT-2001	CT-1700**
CTAPF10-16-C	14	16-14	0	.41	.13	.06	.19	RED	1/2	CT-920, CT-920CH, CT-2920, CT-930, CT-930CH, CT-940CH*, CT-2940*	
	12	16-12		[10.4]	[3.3]	[1.5]	[4.8]				
	10	14									
CTAPF8-12-C	10	10	0	.67	.19	.07	.26	BLUE	11/16	CT-920, CT-920CH, CT-2920, CT-930, CT-930CH, CT-940CH*, CT-2940*	
	8	12		[17.0]	[4.8]	[1.8]	[6.6]				
CTAPF6-12-C	8	10-8	0	.67	.24	.07	.32	GRAY	11/16	CT-920, CT-920CH, CT-2920, CT-930, CT-930CH, CT-940CH*, CT-2940*	
	6	12-10		[17.0]	[6.1]	[1.8]	[8.1]				
CTAPF4-12-C	6	8-6	1	1.25	.28	.07	.40	BROWN	1-5/16	CT-920, CT-920CH, CT-2920, CT-930, CT-930CH, CT-940CH*, CT-2940*	
	5,4	12-8		[31.8]	[7.1]	[1.8]	[10.2]				
CTAPF3-12-C	5,4	6-5	1	1.25	.31	.08	.46	GREEN	1-5/16	CT-920, CT-920CH, CT-2920, CT-930, CT-930CH, CT-940CH*, CT-2940*	
	3	12-6		[31.8]	[7.9]	[2.0]	[11.7]				
CTAPF2-12-C	4	4	1	1.25	.33	.08	.51	PINK	1-5/16	CT-920, CT-920CH, CT-2920, CT-930, CT-930CH, CT-940CH*, CT-2940*	
	3	5		[31.8]	[8.4]	[2.0]	[13.0]				
	2	12-6									
CTAPF1-12-C	3	4-3	2	1.82	.40	.08	.57	BLACK	1-7/8	CT-920, CT-920CH, CT-2920, CT-930, CT-930CH, CT-940CH*, CT-2940*	
	2	5-4		[46.2]	[10.2]	[2.0]	[14.5]				
	1	12-5									
CTAPF1/0-12-L	2	4-2	2	1.82	.42	.09	.63	ORANGE	1-7/8	CT-920, CT-920CH, CT-2920, CT-930, CT-930CH, CT-940CH*, CT-2940*	
	1	4-3		[46.2]	[10.7]	[2.3]	[16.0]				
	1/0	12-4									
CTAPF2/0-12-Q	1	2-1	2	1.82	.48	.09	.71	PURPLE	1-7/8	CT-920, CT-920CH, CT-2920, CT-930, CT-930CH, CT-940CH*, CT-2940*	
	1/0	3-2		[46.2]	[12.2]	[2.3]	[18.0]				
	2/0	12-3									
CTAPF3/0-12-Q	1/0	1-1/0	2	1.82	.55	.09	.81	YELLOW	1-7/8	CT-920, CT-920CH, CT-2920, CT-930, CT-930CH, CT-940CH*, CT-2940*	
	2/0	2-1		[46.2]	[14.0]	[2.3]	[20.6]				
	3/0	12-2									

\*CT-940CH AND CT-2940 REQUIRE CD-940-DA ADAPTER FOR CDM-920DIES  
 \*\*CT-1700 CRIMP DIE POCKETS ARE INTEGRATED INTO THE TOOL HEAD



**PANDUIT CORP. TINLEY PARK, ILLINOIS**  
 NON-INSULATED THIN-WALL C-TAP CONNECTORS  
 CUSTOMER DRAWING

UNLESS OTHERWISE SPECIFIED, DIMENSIONAL TOLERANCES ARE:  
 (X) ± — ANGLES ± —  
 (XX) ± —  
 (XXX) ± —  
 INCHES, THIRD ANGLE PROJECTION

SCALE NONE  
 DRAWING NO / CAD FILE C41172\_05  
 DWG SIZE B

REV	DATE	BY	CHK	DESCRIPTION	ECN	CUST'CH'D
05	11/09	JHNU	JHNU	CONVERTED DWG TO SOLIDWORKS		
04	10/02	SAB	SAB	REMOVED T&B TOOL INFORMATION & ADDED 2 COLUMNS OF PANDUIT TOOL INFORMATION		
03	6/02	SAB	JAC	REMOVED CT-740 & CT-2001 TOOL COLUMN & ADDED T&B COLUMN		
02	9/01	SAB	RJS	REVISED & REDRAWN, ADDED CTAPF10-I-6-C		
01	9/97	TIM	WJB	REVISED RIBS		

- NOTES:
- MATERIAL: COPPER
  - UL LISTED AND CSA CERTIFIED FOR APPLICATIONS UP TO 600 VOLTS, TEMPERATURE RATING 90 °C
  - PACKAGE QTY:  
 -L = 50  
 -C = 100  
 -Q = 25

UNLESS OTHERWISE SPECIFIED DIMENSIONAL TOLERANCES ARE:  
 (X) ± — ANGLES ± —  
 (XX) ± —  
 (XXX) ± —  
 INCHES, THIRD ANGLE PROJECTION

SCALE NONE  
 DRAWING NO / CAD FILE C41172\_05  
 DWG SIZE B

SEE NOTES