



Chipsmall Limited consists of a professional team with an average of over 10 year of expertise in the distribution of electronic components. Based in Hongkong, we have already established firm and mutual-benefit business relationships with customers from,Europe,America and south Asia,supplying obsolete and hard-to-find components to meet their specific needs.

With the principle of “Quality Parts,Customers Priority,Honest Operation,and Considerate Service”,our business mainly focus on the distribution of electronic components. Line cards we deal with include Microchip,ALPS,ROHM,Xilinx,Pulse,ON,Everlight and Freescale. Main products comprise IC,Modules,Potentiometer,IC Socket,Relay,Connector.Our parts cover such applications as commercial,industrial, and automotives areas.

We are looking forward to setting up business relationship with you and hope to provide you with the best service and solution. Let us make a better world for our industry!



## Contact us

Tel: +86-755-8981 8866 Fax: +86-755-8427 6832

Email & Skype: info@chipsmall.com Web: www.chipsmall.com

Address: A1208, Overseas Decoration Building, #122 Zhenhua RD., Futian, Shenzhen, China



- \* LVPECL Output
- \* Industry Standard Outline

- Applications**
- \* Serial Communications
  - \* Routers
  - \* Switches
  - \* WAN Interfaces
  - \* Test Equipment



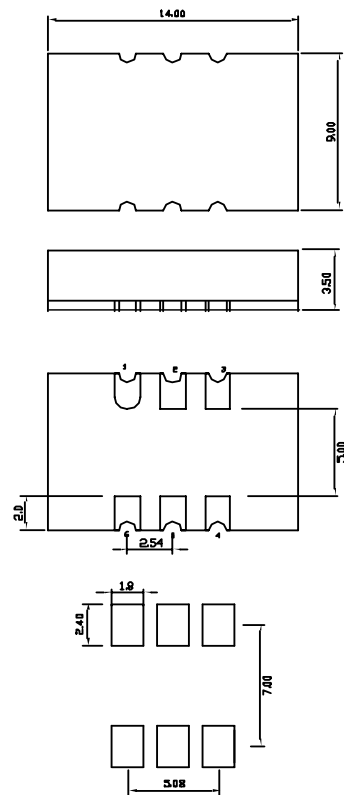
**Part Numbering Example: CTED Z - A5 B3 - 222.5792 TS**

<b>CTED</b>	<b>Z</b>	<b>A5</b>	<b>B3</b>	<b>222.5792</b>	<b>TS</b>
<b>SERIES</b>	<b>PACKAGING OPTIONS</b>	<b>OPERATING TEMP.</b>	<b>STABILITY</b>	<b>FREQUENCY</b>	<b>TRI-STATE</b>
CTED	Blank = Bulk Z = Tape and Reel	Blank = 0°C ~ +70°C A5 = -20°C ~ +70°C	B3 = ±2.5 ppm		TS = Tri-State

<b>Specifications:</b>	<b>Min</b>	<b>Typ</b>	<b>Max</b>	<b>Unit</b>
<b>Frequency Range:</b>	38		640	MHz
<b>Stability:</b>	- 2.5		+ 2.5	ppm
<b>Supply Voltage:</b>	3.135	3.3	3.465	V
<b>Operating Temperature:</b>	-30		+ 70	°C
<b>Storage Temperature:</b>	-40		+ 85	°C
<b>Duty Cycle:</b>	45		55	%
<b>Start-Up Time:</b>		3	10	mS
<b>Aging: (ppm/1st Year)</b> Ta=25C, Vdd=3.3V			1	ppm
<b>Supply Current:</b>			100	mA
<b>Short Circuit Current:</b>		± 50		mA
<b>RMS Period Jitter:</b>		5		pS
<b>RMS Integrated Jitter: 12kHz to 20MHz</b>		0.7		pS
<b>Phase Noise @ 10kHz:</b>			-120	dBc/Hz
<b>Output Voltage:</b> Voh Vol	Vdd - 1.025		Vdd - 1.62	V V
<b>Rise/Fall Time:</b>		0.4	0.8	nS
<b>Output Level:</b>	LVPECL			
<b>Packaging:</b>	Tape and Reel 1000 pcs per Reel			

**CTED**

Dimensions are in mm



- PIN Function**
- 1 DISABLE
  - 2 NO CONNECT
  - 3 Ground
  - 4 LVPECL +
  - 5 LVPECL -
  - 6 Vdd

**LVPECL Levels Test Circuit**

