



Chipsmall Limited consists of a professional team with an average of over 10 year of expertise in the distribution of electronic components. Based in Hongkong, we have already established firm and mutual-benefit business relationships with customers from,Europe,America and south Asia,supplying obsolete and hard-to-find components to meet their specific needs.

With the principle of "Quality Parts,Customers Priority,Honest Operation,and Considerate Service",our business mainly focus on the distribution of electronic components. Line cards we deal with include Microchip,ALPS,ROHM,Xilinx,Pulse,ON,Everlight and Freescale. Main products comprise IC,Modules,Potentiometer,IC Socket,Relay,Connector.Our parts cover such applications as commercial,industrial, and automotives areas.

We are looking forward to setting up business relationship with you and hope to provide you with the best service and solution. Let us make a better world for our industry!



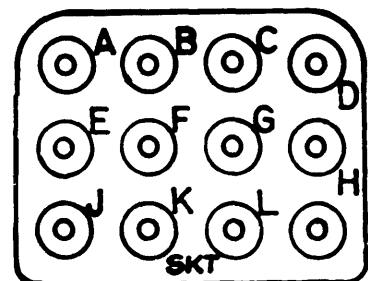
Contact us

Tel: +86-755-8981 8866 Fax: +86-755-8427 6832

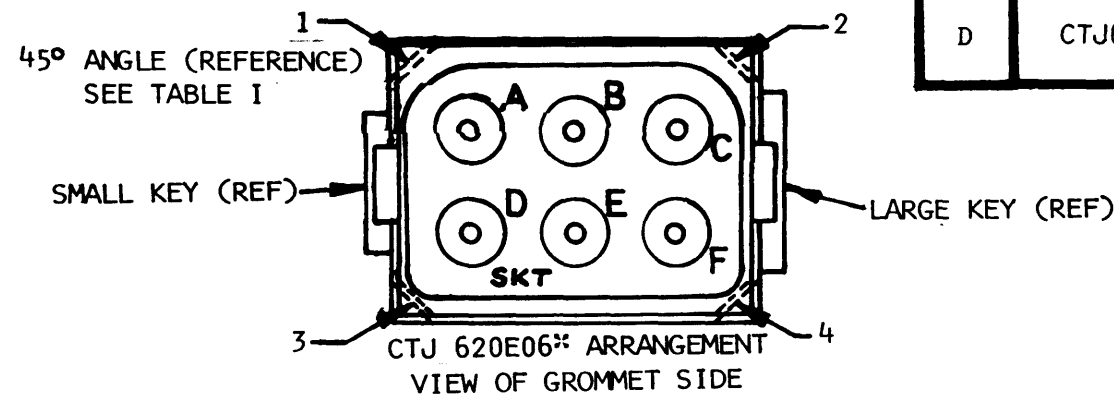
Email & Skype: info@chipsmall.com Web: www.chipsmall.com

Address: A1208, Overseas Decoration Building, #122 Zhenhua RD., Futian, Shenzhen, China

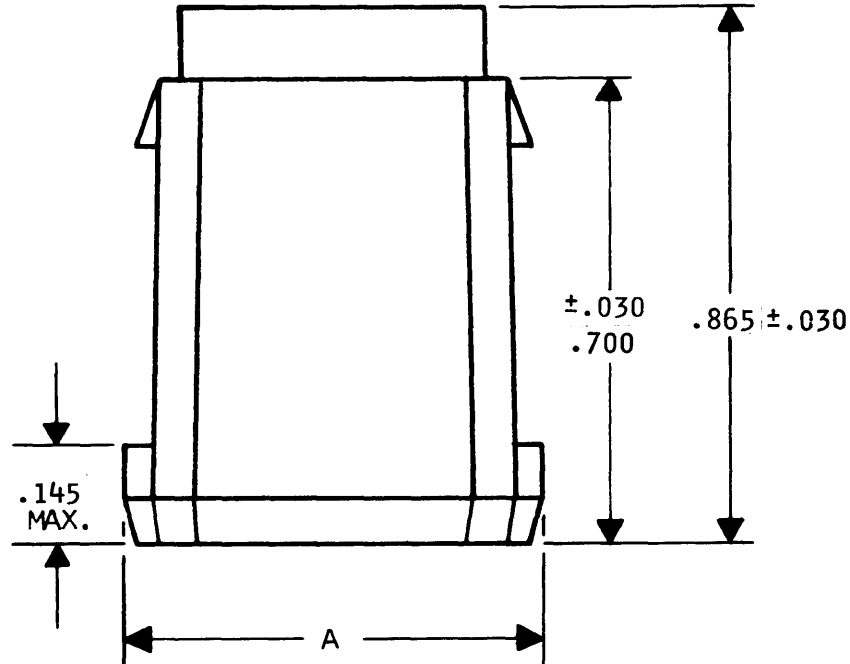
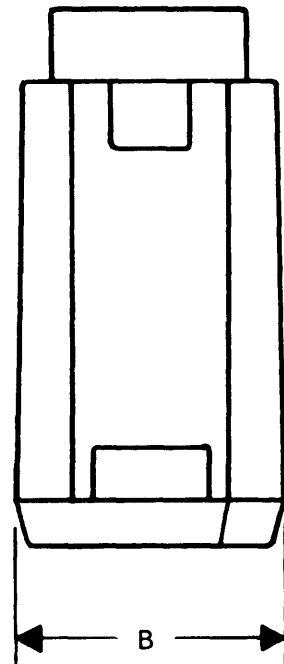




CTJ 620E12** ARRANGEMENT
GROMMET IDENTIFICATION



CTJ 620E06** ARRANGEMENT
VIEW OF GROMMET SIDE



D CTJ620E****

REVISIONS			
SYM	DESCRIPTION	DATE	APPROVED
N/C	NEW RELEASE PER E.O. 82018	1-24-76	
A	REVISED & REDRAWN PER E.O. 81099	2-4-76	JDM
B	REVISED PER E.O. 82118	5/11/76	Rev. H.
C	REVISED PER E.O. 88553	3-1-83	J.H.
D	REVISED PER E.O. A8935.	12-20-90	P

9. CAVITY IDENTIFICATION IS SHOWN FOR REFERENCE ONLY AND MAY NOT BE IN TRUE POSITION.
8. MODULE UNMATING TOOL, PART NUMBER CTJ-R00, TO BE ORDERED SEPARATELY.
7. CONTACT INSERTION/REMOVAL TOOL, DEUTSCH PART NUMBER M15570-20 (MS PART NUMBER M83723-31-20).
6. SOCKET CONTACTS, DEUTSCH PART NUMBER CTS-S20/20 (MS PART NUMBER M39029/22-192).
5. MODULES MEET APPLICABLE PERFORMANCE REQUIREMENTS OF MIL-C-83723, REV B, EXCEPT AS FOLLOWS:
CONTACT ENGAGING & SEPARATION FORCES (INITIAL):
18 OZ MAX/.7 OZ. MIN.

#20 SOCKET CONTACT RETENTION FORCES: 15 LBS. MIN. (AXIAL)
USABLE WIRE SIZE: AWG 20 THRU 24.
GROMMET WILL SEAL ON SMOOTH INSULATION FROM .040 TO .083" O.D.
MODULE MATING FORCE: 6 CONTACT - 19 LBS. MAX., 12 CONTACT
26 LBS. MAX.

4. MATERIAL: HOUSING: PLASTIC, GROMMET: SILICONE ELASTOMER, CONTACTS: COPPER ALLOY.
3. CONTACT CENTER TO CENTER SPACING .130
2. DIMENSIONS ARE SPECIFIED IN INCHES.
1. MATES WITH MODULE, RECEPTACLE, DEUTSCH PART NUMBER CTJ920E****.

NOTE:

KEYING POSITION	45°±1° ANGLE LOCATIONS
N	1 & 2
1	3 & 4
2	1 & 3
3	2 & 4

PART NUMBER	A±.010	B±.010	NO. OF CONTACTS
CTJ620E06**	.530	.360	6
CTJ620E12**	.652	.510	12

EXPLANATION OF PART NUMBER: CTJ 6 20 E ****

BASIC IDENTIFIER _____
PLUG MODULE _____
CONTACT SIZE (20) _____
ENVIRONMENTAL _____
NUMBER OF CONTACTS _____
06 = 6
12 = 12

KEYING POSITION. PROVIDED WITH 2 45° CORNERS (REF DASHED LINES) IN PLACE OF 90° CORNERS, AT INDICATED LOCATION ON GROMMET VIEW AND TABLE I.
N = STANDARD

(CONSULT FACTORY) 1 THRU 3, ALTERNATE.

SIGNATURE & DATE		MODULE ASSEMBLY, PLUG COMPLETE TERMINATION JUNCTION 6 & 12 CONTACTS ENVELOPE	CP	MATL CODE	
DR	<i>John Platt 2-4-76</i>		The Deutsch Company ELECTRONIC COMPONENTS DIVISION Municipal Airport Benning, California		
CHK	<i>Kenyon Harington 2-4-76</i>		B	CTJ620E****	
PE	<i>J. MACDONALD 2-4-76</i>			DWG SIZE	CODE 11139
APPD				SHEET 1 OF 1	
SCALE	NONE	WT			