



Chipsmall Limited consists of a professional team with an average of over 10 year of expertise in the distribution of electronic components. Based in Hongkong, we have already established firm and mutual-benefit business relationships with customers from,Europe,America and south Asia,supplying obsolete and hard-to-find components to meet their specific needs.

With the principle of "Quality Parts,Customers Priority,Honest Operation,and Considerate Service",our business mainly focus on the distribution of electronic components. Line cards we deal with include Microchip,ALPS,ROHM,Xilinx,Pulse,ON,Everlight and Freescale. Main products comprise IC,Modules,Potentiometer,IC Socket,Relay,Connector.Our parts cover such applications as commercial,industrial, and automotives areas.

We are looking forward to setting up business relationship with you and hope to provide you with the best service and solution. Let us make a better world for our industry!



## Contact us

Tel: +86-755-8981 8866 Fax: +86-755-8427 6832

Email & Skype: info@chipsmall.com Web: www.chipsmall.com

Address: A1208, Overseas Decoration Building, #122 Zhenhua RD., Futian, Shenzhen, China



PART NAME

UTILIBOX (STYLE D)

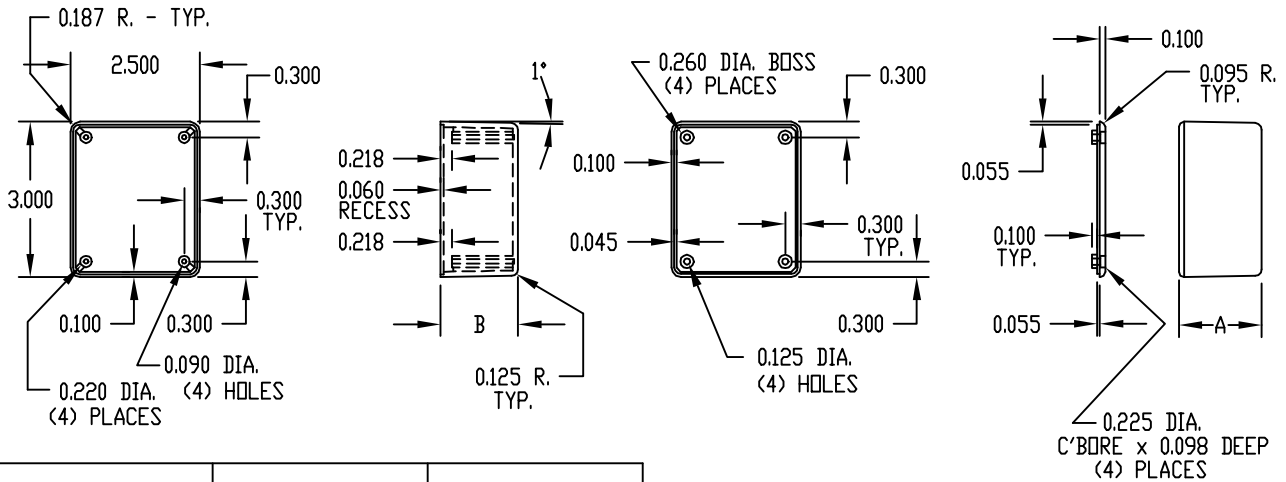
PART No.

CU-742 & CU-744

MATERIAL: HIGH-IMPACT POLYSTYRENE  
COLOR: BLACK  
FINISH: SMOOTH, MATTE

FOUR (4) #4 x 0.562" LG. SCREWS  
 SUPPLIED FOR ASSEMBLY.

NOTE: ALL DIMENSIONS HAVE ±0.010 TOLERANCE  
 UNLESS OTHERWISE SPECIFIED.



PART No.	A	B
CU-742	1.000	0.900
CU-744	1.600	1.500

PART NAME

PLASTIBOX (STYLE A)

PART No.

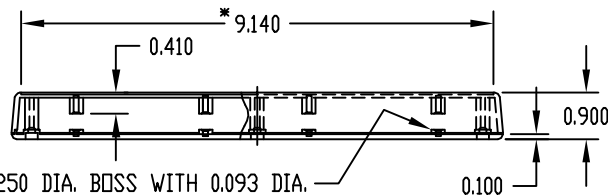
PT-11284 & PS-11285

MATERIAL: HIGH-IMPACT ABS  
COLOR: BLACK OR GRAY

FINISH: PREFIX PS- TEXTURED BODY WITH SMOOTH TOP INSERT.  
 PREFIX PT- TEXTURED BODY WITH TEXTURED TOP.

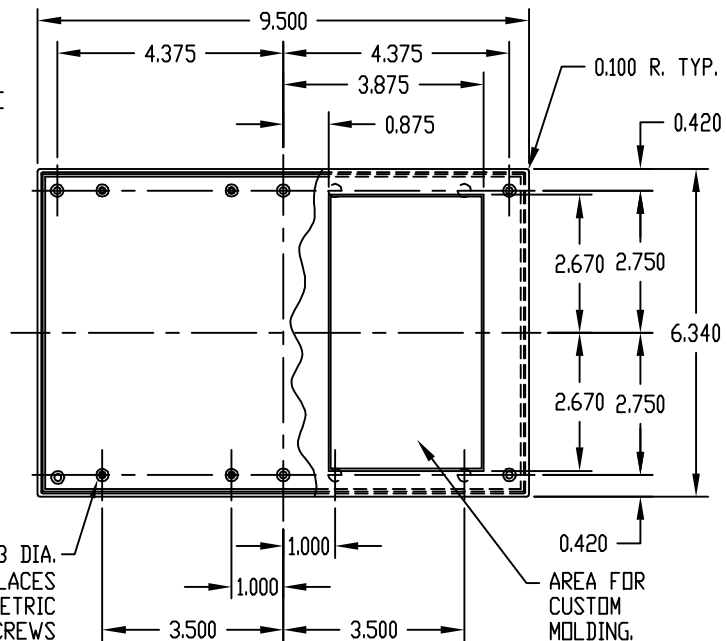
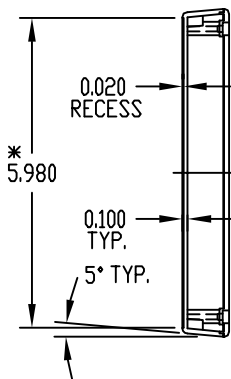
SIX (6) #4 x 0.375" LG. SCREWS  
 SUPPLIED FOR ASSEMBLING TOP.

FOUR (4) NON-SKID PUSH-ON FEET SUPPLIED.



\*-USABLE AREA ON COVER ALSO AVAILABLE FOR CUSTOM MOLDING.

NOTE: ALL DIMENSIONS HAVE ±0.015 TOLERANCE UNLESS OTHERWISE SPECIFIED.



0.250 DIA. BOSS WITH 0.093 DIA. HOLE x 0.310 DEEP (8) PLACES  
 MOUNTING BOSSES USE EITHER M2.5 METRIC OR #4 STD. SHEET METAL SCREWS x 0.250" LG. (NOT SUPPLIED)