



Chipsmall Limited consists of a professional team with an average of over 10 year of expertise in the distribution of electronic components. Based in Hongkong, we have already established firm and mutual-benefit business relationships with customers from,Europe,America and south Asia,supplying obsolete and hard-to-find components to meet their specific needs.

With the principle of “Quality Parts,Customers Priority,Honest Operation,and Considerate Service”,our business mainly focus on the distribution of electronic components. Line cards we deal with include Microchip,ALPS,ROHM,Xilinx,Pulse,ON,Everlight and Freescale. Main products comprise IC,Modules,Potentiometer,IC Socket,Relay,Connector.Our parts cover such applications as commercial,industrial, and automotives areas.

We are looking forward to setting up business relationship with you and hope to provide you with the best service and solution. Let us make a better world for our industry!



Contact us

Tel: +86-755-8981 8866 Fax: +86-755-8427 6832

Email & Skype: info@chipsmall.com Web: www.chipsmall.com

Address: A1208, Overseas Decoration Building, #122 Zhenhua RD., Futian, Shenzhen, China



Y SERIES

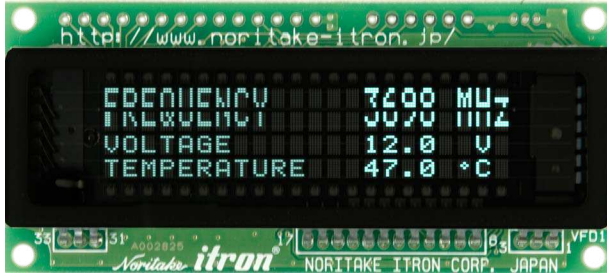
<http://www.noritake-elec.com/y-series.htm>



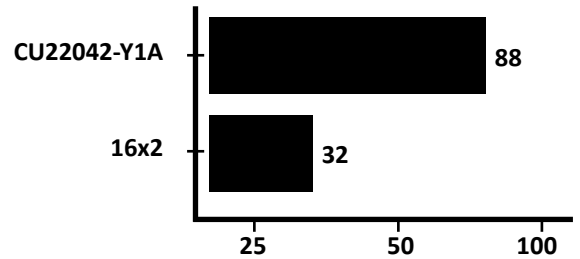
ISO 9001 and ISO 14000 Certified

16 x 2 LCD footprint

CU22042-Y1A / 100



Character number comparison



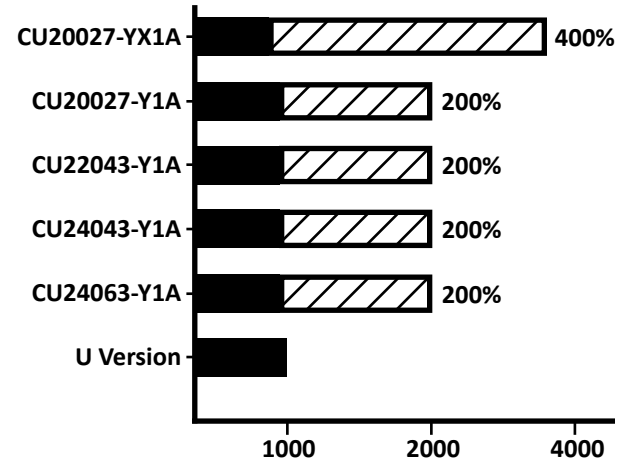
20 x 2 LCD footprint

CU20027-YX1A

CU20027-Y1A / Y100



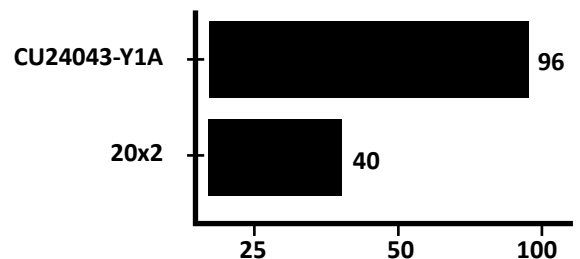
Brightness comparison (Cd/m²)



CU24043-Y1A / Y100

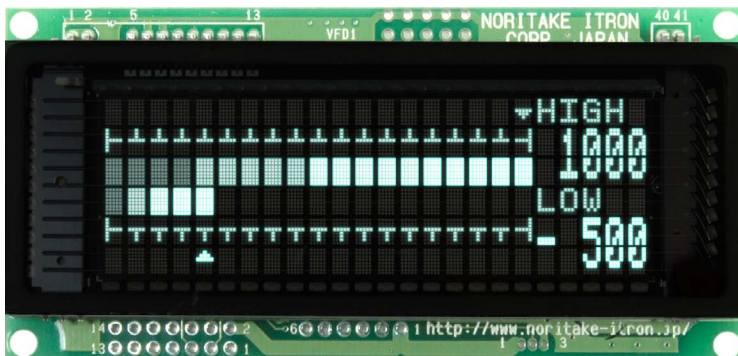


Character number comparison

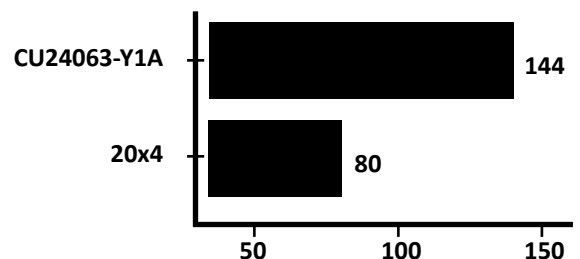


20 x 4 LCD footprint

CU24063-Y1A / Y100



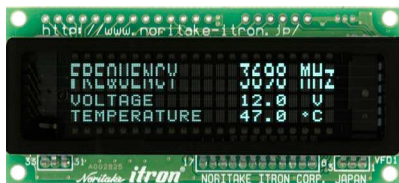
Character number comparison



New to the Y Series

CU22042-Y1A

22x4 characters in 16x2 LCD footprint.



CU20027-YX1A

20x2 LCD footprint and brightest Vacuum Fluorescent Display (VFD) module from Noritake Itron.



Features

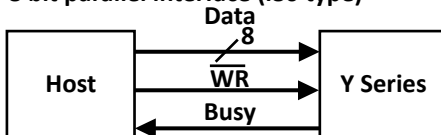
- Easy command set
- 2x the brightness with the brightness boost
- Highlight character
- 16 UDF and 1 custom font table
- 14 International font tables and 10 extended ASCII
- Select from 1x1, 1x2, and 2x2 character sizes
- More characters in compact display size
- 1U rack height models available
- Available in i80 8-bit parallel, asynchronous serial, synchronous serial, and async RS232 interfaces
- Reliability in all environmental conditions
- Wide temperature range of -40°C up to +85°C

Evaluation kits available

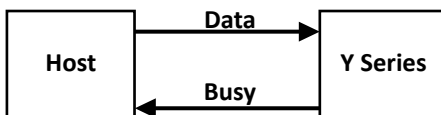
Visit our online shop for Y Series evaluation kits:
noritake-vfd.com/yseries.aspx

Available interfaces

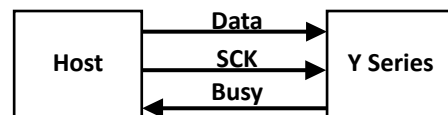
8 bit parallel interface (i80 type)



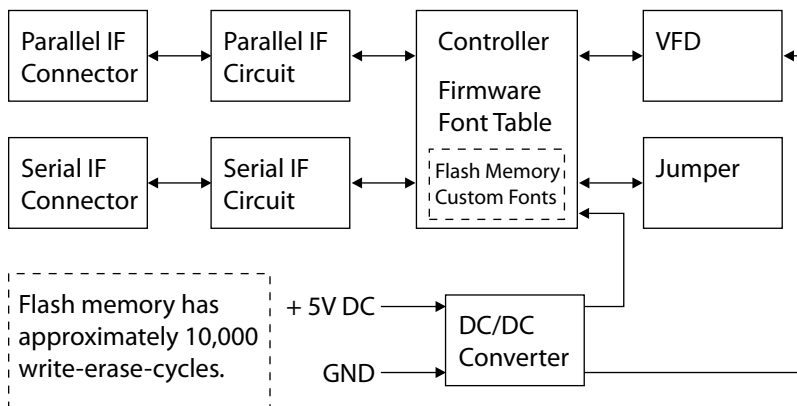
Async serial interface



Sync serial interface

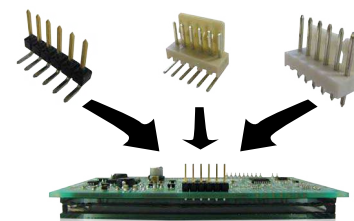
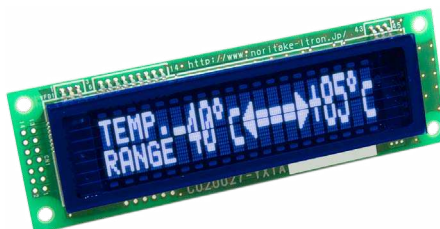


Block Diagram



Value Added Services

Let us pre-assemble the connectors, cables, color filter, and/or conformal coating with your VFD.



VFD module with color filter

Part Number	Number of Characters	Character Height (mm)	Display Size (mm)	PCB Size (mm)	Interface	Power Supply Typical
CU20027-Y1A	20 x 2	7	73.4 x 15.0	116.0 x 37.0	i80 8-bit Parallel (5V CMOS) Async Serial (5V CMOS) Sync Serial (5V CMOS)	5 V / 240 mA
New CU22042-Y1A	22 x 4	2	52.5 x 11.5	80.0 x 36.0		5 V / 180 mA
CU24043-Y1A	24 x 4	3	73.4 x 15.0	116.0 x 37.0		5 V / 220 mA
CU24063-Y1A	24 x 6	3	70.4 x 22.7	98.0 x 47.0		5 V / 320 mA
New CU20027-YX1A	20 x 2	7	73.4 x 15.0	116.0 x 37.0		5 V / 230 mA
New CU200211-Y1A	20 x 2	11	159.0 x 23.6	190.0 x 55.0		5 V / 720 mA
CU20027-Y100	20 x 2	7	73.4 x 15.0	116.0 x 37.0	i80 8-bit Parallel (5V CMOS) Async Serial (RS232)	5 V / 240 mA
New CU22042-Y100	22 x 4	2	52.5 x 11.5	80.0 x 36.0		5 V / 180 mA
CU24043-Y100	24 x 4	3	73.4 x 15.0	116.0 x 37.0		5 V / 220 mA
CU24063-Y100	24 x 6	3	70.4 x 22.7	98.0 x 47.0		5 V / 320 mA
New CU200211-Y100	20 x 2	11	159.0 x 23.6	190.0 x 55.0		5 v / 720 mA

Noritake Co., Inc.

Electronics Division Headquarter
2635 Clearbrook Drive
Arlington Heights, IL 60005
Toll free: (800) 779 - 5846
Phone: (847) 439 - 9020
support.ele@noritake.com
www.noritake-elec.com

East Coast

New Jersey Branch
15-22 Fair Lawn Ave.
Fair Lawn, NJ 07410
Toll free: (888) 296 - 3423
Phone: (201) 475 - 5200
Fax: (201) 796 - 2269

Midwest, Canada, and Mexico

Chicago Branch
2635 Clearbrook Dr.
Arlington Heights, IL 60005
Toll free: (800) 779 - 5846
Phone: (847) 439 - 9020
Fax: (847) 593 - 2285

West Coast

Los Angeles Branch
21081 S. Western Ave. Ste 180
Torrance, CA 90501
Toll free: (888) 795 - 3423
Phone: (310) 320 - 1700
Fax: (310) 320 - 2900

Noritake itron
The brighter side of electronics

E-M1-0001-09