



Chipsmall Limited consists of a professional team with an average of over 10 year of expertise in the distribution of electronic components. Based in Hongkong, we have already established firm and mutual-benefit business relationships with customers from,Europe,America and south Asia,supplying obsolete and hard-to-find components to meet their specific needs.

With the principle of “Quality Parts,Customers Priority,Honest Operation,and Considerate Service”,our business mainly focus on the distribution of electronic components. Line cards we deal with include Microchip,ALPS,ROHM,Xilinx,Pulse,ON,Everlight and Freescale. Main products comprise IC,Modules,Potentiometer,IC Socket,Relay,Connector.Our parts cover such applications as commercial,industrial, and automotives areas.

We are looking forward to setting up business relationship with you and hope to provide you with the best service and solution. Let us make a better world for our industry!



Contact us

Tel: +86-755-8981 8866 Fax: +86-755-8427 6832

Email & Skype: info@chipsmall.com Web: www.chipsmall.com

Address: A1208, Overseas Decoration Building, #122 Zhenhua RD., Futian, Shenzhen, China



250W Single Output Low Profile Power Supplies

Features

- ◆ High Efficiency, up to 90%
- ◆ 1.18" high
- ◆ Wide Range AC Input
- ◆ Convection Cooled
- ◆ Coated pcb as standard
- ◆ Three year warranty



Key Market Segments & Applications



Specifications		CUS250LD
Model		CUS250LD
AC Input Voltage (300VAC for 5s)	VAC	85 - 265VAC
Input Frequency	Hz	47 - 63Hz
DC Input Voltage	VDC	120 - 370VDC (No safety certification)
Inrush Current (cold start)	A	20A at 115VAC, 40A at 230VAC
Power Factor	-	Meets EN61000-3-2 (Typical PF 0.98/0.95)(1)
Input Current (115/230VAC)	A	2.8 / 1.4
Temperature Coefficient	-	<0.02%/°C (0 - 50°C)
Overcurrent Protection	-	> 105%
Overvoltage Protection (2)	V	3.3V: 4 - 5.25V, 4V: 5 - 6.5V, 5V: 5.75 - 7.5V, 12V: 13.8 - 16.2V, 24V: 27.6 - 32.4V
Hold Up Time	ms	20ms
Leakage Current (240VAC 60Hz)	mA	<0.75mA
Remote Sense	-	No
LED Indicator	-	Green LED = On
Operating Temperature (3)	°C	U Channel: -25 to +70°C. Full load at 40°C. Derate to 50% load at 70°C With Cover: -25 to +70°C. Full load at 40°C. Derate to 40% load at 70°C
Storage Temperature	°C	-30 to +75°C
Operating Humidity (non condensing)	%	30 - 90% RH
Storage Humidity (non condensing)	%	10 - 90% RH
Cooling	-	Convection
Withstand Voltage	-	Input to Ground 2kVAC, Input to Output 3kVAC, Output to Ground 500VAC for 1 min.
Isolation Resistance	MΩ	>100MΩ at 25°C & 70%RH, Output to Ground 500VDC
Vibration (non operating)	-	10 - 55Hz: 19.6m/s ² constant sweep 1 min X, Y, Z for 1 hour
Shock	-	< 196.1 m/s ² (20G)
Immunity	-	IEC61000-4-2 (lv 2, 3), -3 (lv3), -4 (lv 3), -5 (lv3, 4), -6 (lv 3), -8 (lv 4), -11
Safety Agency Certifications	-	UL60950-1, CSA60950-1-07 (cTUVus), EN60950-1, CE Mark
Conducted & Radiated EMI	-	EN55022-B, FCC-B
Weight (Typ)	g	700
Size (LxWxH)	in(mm)	U Channel: 7.8 x 4 x 1.18" (198 x 102 x 30) With Cover: 7.8 x 4 x 1.34" (198 x 102 x 34)
Warranty	yrs	Three Years

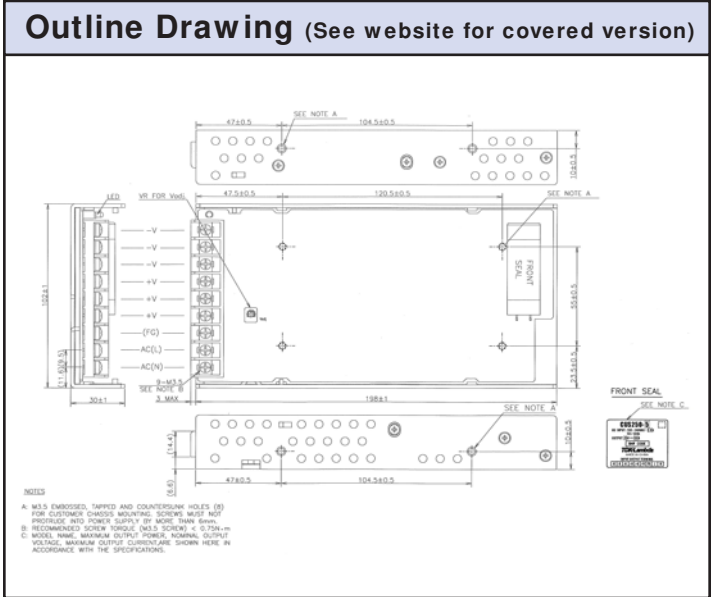
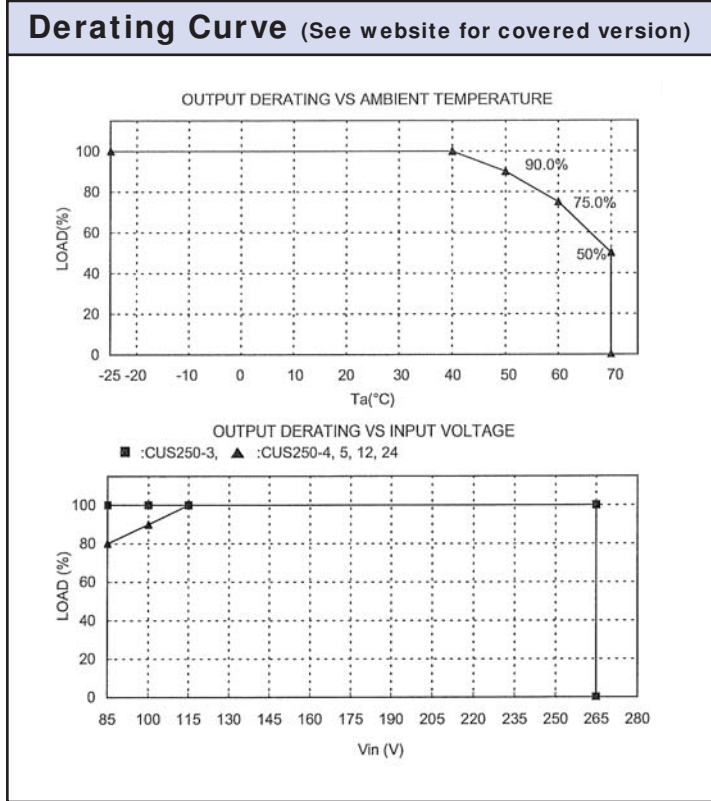
Notes:

(1) 115 / 230VAC input

(2) Cycle AC to reset

(3) See derating curves on page 2. Derates linearly to 80% load from 115VAC to 85VAC input (excluding 3.3V model). -40°C start up above 88VAC input.

Model Selector								
Model	Voltage	Adjust Range (V)	Max Current (A)	Max Power (W)	Load Reg (mV)	Line Reg (mV)	Ripple Noise (mV)	Efficiency (typ) % ⁽¹⁾
CUS250LD-3	3.3V	2.97 - 3.63	50	165	40	20	120	86 / 88
CUS250LD-4	4.2V	3.78 - 4.62	50	210	40	20	120	87 / 89
CUS250LD-5	5V	4.5 - 5.5	50	250	40	20	120	88 / 90
CUS250LD-12	12V	10.8 - 13.2	21	252	96	48	120	88 / 90
CUS250LD-24	24V	21.6 - 26.4	10.5	252	192	96	150	88 / 90



Options

Suffix	Description
Blank	No cover
/A	Cover

For Additional Information, please visit us.tdk-lambda.com/lp/products/cus-series.htm

