



Chipsmall Limited consists of a professional team with an average of over 10 year of expertise in the distribution of electronic components. Based in Hongkong, we have already established firm and mutual-benefit business relationships with customers from,Europe,America and south Asia,supplying obsolete and hard-to-find components to meet their specific needs.

With the principle of “Quality Parts,Customers Priority,Honest Operation,and Considerate Service”,our business mainly focus on the distribution of electronic components. Line cards we deal with include Microchip,ALPS,ROHM,Xilinx,Pulse,ON,Everlight and Freescale. Main products comprise IC,Modules,Potentiometer,IC Socket,Relay,Connector.Our parts cover such applications as commercial,industrial, and automotives areas.

We are looking forward to setting up business relationship with you and hope to provide you with the best service and solution. Let us make a better world for our industry!



## Contact us

Tel: +86-755-8981 8866 Fax: +86-755-8427 6832

Email & Skype: info@chipsmall.com Web: www.chipsmall.com

Address: A1208, Overseas Decoration Building, #122 Zhenhua RD., Futian, Shenzhen, China



# CMOS

## Voltage Controlled Crystal Oscillator

### CVHD-037X Model 5x7 mm SMD, 3.3V, CMOS

<b>Frequency Range:</b>	30.000 to 170.000 MHz
<b>Operating Temperature Range:</b>	-40°C to 85°C
<b>Storage Temperature Range:</b>	-45°C to 90°C
<b>Input Voltage:</b>	3.3V ± 5%
<b>Control Voltage:</b>	1.65V ± 1.5V
<b>Input Current:</b>	15mA Max
<b>Output:</b>	CMOS
Symmetry:	45/55% Max @ 50% Vdd
Rise/Fall Time:	3ns Max @ 10% to 90%
Pullability APR:	±50ppm Min
Linearity:	10%
Load:	15pF Max
Logic "1" Level:	0.9×Vdd Min
Logic "0" Level:	0.1×Vdd Max
<b>Input Impedance:</b>	5-10 MΩ
<b>Enable Delay Time:</b>	2ms Max
<b>Disable Delay Time:</b>	200ns Max
<b>Phase Noise (Typical):</b>	
10 Hz Offset:	-75 dBc/Hz
100 Hz Offset:	-100 dBc/Hz
1 kHz Offset:	-130 dBc/Hz
10 kHz Offset:	-145 dBc/Hz
100 kHz Offset:	-155 dBc/Hz
1 MHz Offset:	-160 dBc/Hz
10 MHz Offset:	-160 dBc/Hz



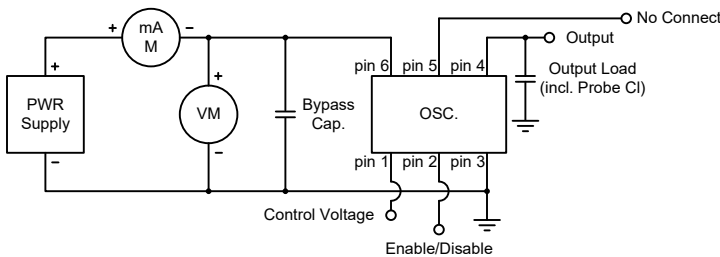
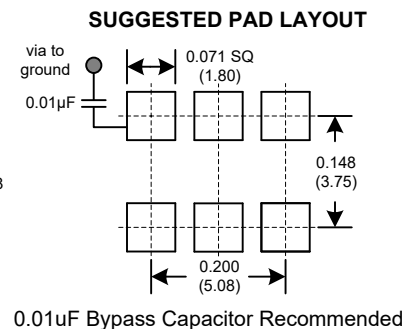
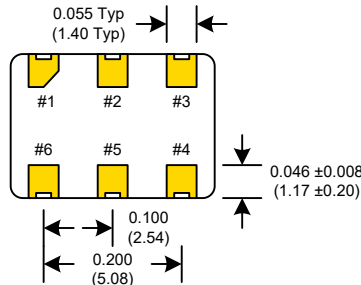
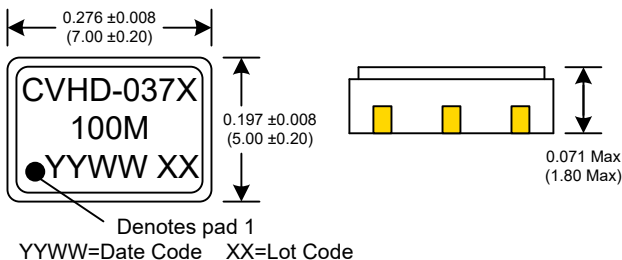
Standard Frequencies (MHz)
80.000
100.000
122.880
125.000

Mechanical:	
Shock:	MIL-STD-883, Method 2002, Condition B
Solderability:	MIL-STD-883, Method 2003
Vibration:	MIL-STD-883, Method 2007, Condition A
Solvent Resistance:	MIL-STD-202, Method 215
Resistance to Soldering Heat:	MIL-STD-202, Method 210, Condition I or J
Environmental:	
Thermal Shock:	MIL-STD-883, Method 1011, Condition A
Moisture Resistance:	MIL-STD-883, Method 1004

Part Number Example: CVHD-037X-100.000 = 3.3V, ±50ppm APR, 100 MHz

Dimensions inches (mm)

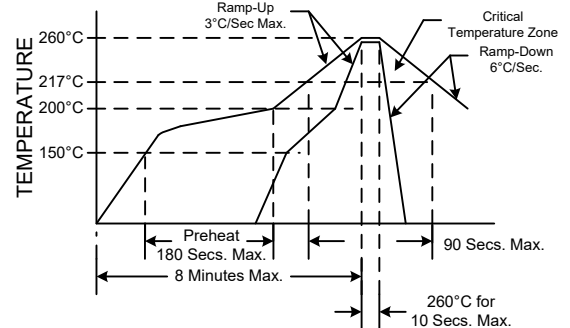
All dimensions are Max unless otherwise specified.



PIN	Connection
1	Cont. Volt
2	E/D
3	GND
4	Output
5	NC
6	Vcc

Enable/Disable	
Function pin 2	Output pin
Open	Active
"1" level 0.7×Vdd Min	Active
"0" level 0.3×Vdd Max	High Z

#### RECOMMENDED REFLOW SOLDERING PROFILE



Available on 16mm Tape and Reel in quantities of 1,000 pcs.

Rev: G  
Date: 19-Jan-2017  
Page 1 of 1

Specifications subject to change without notice.