



Chipsmall Limited consists of a professional team with an average of over 10 year of expertise in the distribution of electronic components. Based in Hongkong, we have already established firm and mutual-benefit business relationships with customers from,Europe,America and south Asia,supplying obsolete and hard-to-find components to meet their specific needs.

With the principle of "Quality Parts,Customers Priority,Honest Operation,and Considerate Service",our business mainly focus on the distribution of electronic components. Line cards we deal with include Microchip,ALPS,ROHM,Xilinx,Pulse,ON,Everlight and Freescale. Main products comprise IC,Modules,Potentiometer,IC Socket,Relay,Connector.Our parts cover such applications as commercial,industrial, and automotives areas.

We are looking forward to setting up business relationship with you and hope to provide you with the best service and solution. Let us make a better world for our industry!



Contact us

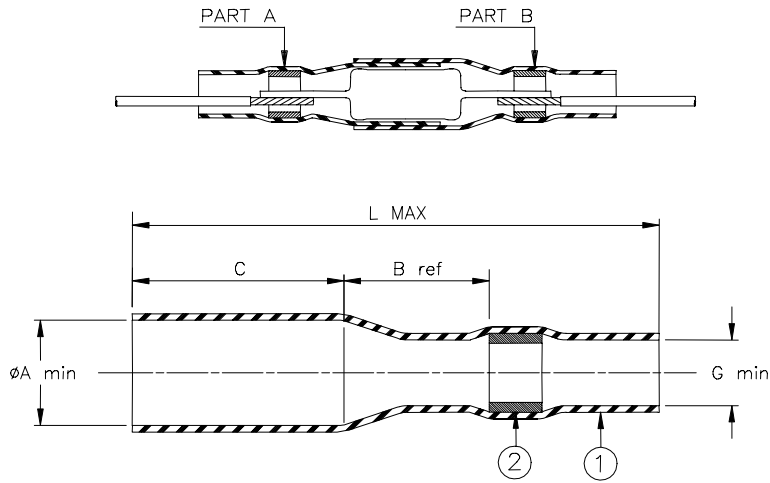
Tel: +86-755-8981 8866 Fax: +86-755-8427 6832

Email & Skype: info@chipsmall.com Web: www.chipsmall.com

Address: A1208, Overseas Decoration Building, #122 Zhenhua RD., Futian, Shenzhen, China



SPECIFICATION CONTROL DRAWING



Product Revision		Product Dimensions				Wire Dimensions			Component Information				
Product Name		ϕA min	B ref	C max	L max	D min	D max G min	AWG	Lr		Dr		
Kit	Subassemblies								max	min	max	min	
CWT-2001	CWT-2001-A	A	2.2 (0.085)	7.7 (0.300)	5.5 (0.215)	22.0 (0.865)	1.1 (0.045)	1.5 (0.060)	22/24	8.0 (0.315)	6.5 (0.255)	2.5 (0.100)	1.8 (0.070)
	CWT-2001-B	A	2.9 (0.114)	7.7 (0.300)	5.5 (0.215)	22.0 (0.865)	1.1 (0.045)	1.5 (0.060)					
CWT-2002	CWT-2002-A	A	3.2 (0.125)	7.7 (0.300)	7.5 (0.295)	27.0 (1.060)	1.1 (0.045)	2.3 (0.090)	20/24	11.0 (0.435)	9.0 (0.355)	3.5 (0.135)	2.5 (0.100)
	CWT-2002-B	A	3.7 (0.145)	7.7 (0.300)	7.5 (0.295)	27.0 (1.060)	1.1 (0.045)	2.3 (0.090)					
CWT-2003	CWT-2003-A	A	3.7 (0.145)	7.7 (0.300)	9.5 (0.375)	27.0 (1.060)	1.8 (0.070)	2.8 (0.110)	18/20	15.0 (0.590)	10.5 (0.415)	3.9 (0.150)	3.0 (0.120)
	CWT-2003-B	A	4.4 (0.175)	7.7 (0.300)	9.5 (0.375)	27.0 (1.060)	1.8 (0.070)	2.8 (0.110)					

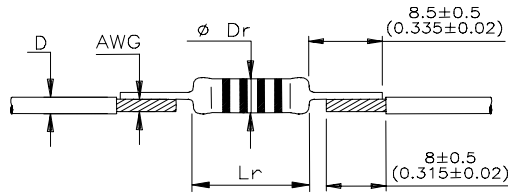
MATERIALS

- INSULATION SLEEVE: Heat-shrinkable, transparent clear, radiation cross-linked polyolefin.
- SOLDER PREFORM WITH FLUX:
 - SOLDER: TYPE Cd18 per ANSI/J-STD-006.
 - FLUX: TYPE ROM1 per ANSI/J-STD-004.

APPLICATION

- These parts are designed to provide an inline termination of a component, rated for +105°C minimum, and meeting the dimensional criteria listed.
- Temperature range: -55°C to +125°C.
- For installation procedure and application equipment, consult Tyco Electronics/Raychem RPIP 824-00.

For best results, prepare the wire and the component as shown:



tyco Electronics		Raychem Products 305 Constitution Drive, Menlo Park, CA. 94025, USA		TITLE: SOLDERSLEEVE DEVICE IN-LINE COMPONENT TERMINATION			
Unless otherwise specified dimensions are in millimeters. [Inches dimensions are shown in brackets]				DOCUMENT NO.: CWT-200X			
TOLERANCES: 0.00 N/A 0.0 N/A 0 N/A		ANGLES: N/A ROUGHNESS IN MICRON		Tyco Electronics reserves the right to amend this drawing at any time. Users should evaluate the suitability of the product for their application.		PROD. REV.: SEE TABLE	
PREPARED BY: mforonda		DCR NUMBER: D030069		REPLACES: D981254		SCALE: None	
						DOC. ISSUE: 4	
						DATE: 8-May-03	
						SIZE: A	
						SHEET: 1 of 1	

If this document is printed it becomes uncontrolled. Check for the latest revision.