



Chipsmall Limited consists of a professional team with an average of over 10 year of expertise in the distribution of electronic components. Based in Hongkong, we have already established firm and mutual-benefit business relationships with customers from,Europe,America and south Asia,supplying obsolete and hard-to-find components to meet their specific needs.

With the principle of “Quality Parts,Customers Priority,Honest Operation,and Considerate Service”,our business mainly focus on the distribution of electronic components. Line cards we deal with include Microchip,ALPS,ROHM,Xilinx,Pulse,ON,Everlight and Freescale. Main products comprise IC,Modules,Potentiometer,IC Socket,Relay,Connector.Our parts cover such applications as commercial,industrial, and automotives areas.

We are looking forward to setting up business relationship with you and hope to provide you with the best service and solution. Let us make a better world for our industry!



Contact us

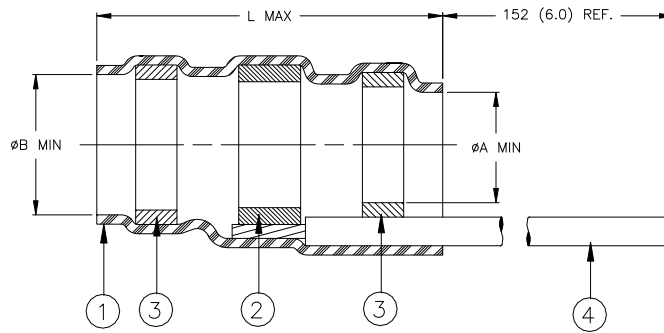
Tel: +86-755-8981 8866 Fax: +86-755-8427 6832

Email & Skype: info@chipsmall.com Web: www.chipsmall.com

Address: A1208, Overseas Decoration Building, #122 Zhenhua RD., Futian, Shenzhen, China



CUSTOMER DRAWING



Product Description	Product Dimensions			Cable Dimensions				
	øA MIN	øB MIN	L MAX	øD MAX	øE MIN	øF MIN	øG MAX	J
CWT-3-W122-5	2.50 (0.098)	3.00 (0.118)	24.50 (0.965)	3.00 (0.118)	1.50 (0.059)	1.00 (0.040)	2.50 (0.098)	7.00±0.50 (0.276±0.020)
CWT-5-W122-5	4.30 (0.169)	4.80 (0.189)	29.30 (1.154)	4.80 (0.189)	2.00 (0.079)	1.50 (0.059)	4.30 (0.169)	9.00±0.50 (0.354±0.020)
CWT-6-W122-5	6.00 (0.236)	6.70 (0.264)	32.00 (1.260)	6.70 (0.264)	3.30 (0.130)	2.80 (0.110)	6.00 (0.236)	10.00±0.50 (0.394±0.020)
CWT-7-W122-5	6.40 (0.252)	7.30 (0.287)	32.50 (1.280)	7.30 (0.287)	3.30 (0.130)	2.80 (0.110)	6.40 (0.252)	11.00±1.00 (0.433±0.040)
CWT-9-W122-5	8.70 (0.343)	9.20 (0.362)	35.50 (1.398)	9.20 (0.362)	4.50 (0.177)	4.00 (0.157)	8.70 (0.343)	12.00±1.00 (0.472±0.040)
CWT-11-W122-5	10.00 (0.394)	11.50 (0.453)	35.50 (1.398)	11.50 (0.453)	4.50 (0.177)	4.00 (0.157)	10.00 (0.394)	13.00±1.00 (0.512±0.040)
CWT-13-W122-5	13.00 (0.512)	15.00 (0.591)	45.50 (1.791)	15.10 (0.594)	7.00 (0.276)	6.50 (0.256)	13.00 (0.512)	17.00±1.00 (0.669±0.040)

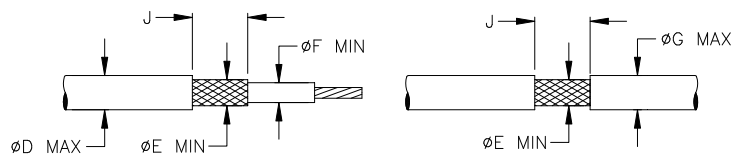
MATERIALS

- INSULATION SLEEVE: Transparent heat-shrinkable radiation cross-linked modified polyolefin.
- SOLDER PREFORM WITH FLUX:
SOLDER: TYPE Cd18 per ANSI/J-STD-006.
FLUX: TYPE ROM1 per ANSI/J-STD-004.
- MELTABLE SEALING RING: Thermally stabilized thermoplastic.
- GROUND LEAD: Raychem cross-linked polyethylene wire, AWG22, stranded tin plated copper. Color: green.

APPLICATION

- These controlled soldering devices are designed for termination of a bare or tin-plated copper shield on a cable having an insulation rated for at least +85°C, meeting the dimensional criteria listed in the table above.
- Temperature range: -55°C to +125°C.
- When installed properly, these devices will meet the requirements of TE Connectivity/Raychem Specification RT-1404.
- For installation procedure and application equipment, consult TE Connectivity /Raychem RPIP 824-00.

For best results, prepare the cable as shown:



TE TE Connectivity			TITLE: SOLDERSLEEVE TERMINATOR WITH PRE-INSTALLED LEAD		
Unless otherwise specified dimensions are in millimeters. [Inches dimensions are shown in brackets] DIMENSIONING AND TOLERANCING PER GPS (ISO STANDARDS)		Raychem Devices	DOCUMENT NO.: CWT-XX-W122-5		
TOLERANCES: 0.00 ± 0.02 MM 0.0 ± 0.2 MM 0 ± 0.5 MM	ANGLES: ± 0°30' ROUGHNESS IN MICRON	Tyco Electronics Corporation reserves the right to amend this drawing at any time. Users should evaluate the suitability of the product for their application.		REV: C	DATE: May 9, 2012
PREPARED BY: YNGUYEN	CAGE CODE: 06090	ECO NUMBER: ECO-12-008844		SCALE: NTS	SIZE: A
				SHEET: 1 of 1	

© 2003-2012 Tyco Electronics Corporation. All rights reserved.

If this document is printed it becomes uncontrolled. Check for the latest revision.