



Chipsmall Limited consists of a professional team with an average of over 10 year of expertise in the distribution of electronic components. Based in Hongkong, we have already established firm and mutual-benefit business relationships with customers from,Europe,America and south Asia,supplying obsolete and hard-to-find components to meet their specific needs.

With the principle of “Quality Parts,Customers Priority,Honest Operation,and Considerate Service”,our business mainly focus on the distribution of electronic components. Line cards we deal with include Microchip,ALPS,ROHM,Xilinx,Pulse,ON,Everlight and Freescale. Main products comprise IC,Modules,Potentiometer,IC Socket,Relay,Connector.Our parts cover such applications as commercial,industrial, and automotives areas.

We are looking forward to setting up business relationship with you and hope to provide you with the best service and solution. Let us make a better world for our industry!



Contact us

Tel: +86-755-8981 8866 Fax: +86-755-8427 6832

Email & Skype: info@chipsmall.com Web: www.chipsmall.com

Address: A1208, Overseas Decoration Building, #122 Zhenhua RD., Futian, Shenzhen, China





CX2041ANL

- BALUN TRANSFORMER
- IMPEDANCE = 75 OHMS
- 1:1CT TURN TATIO
- SURFACE MOUNT PACKAGE

ELECTRICAL SPECIFICATIONS: @ 25°C

INSERTION LOSS:

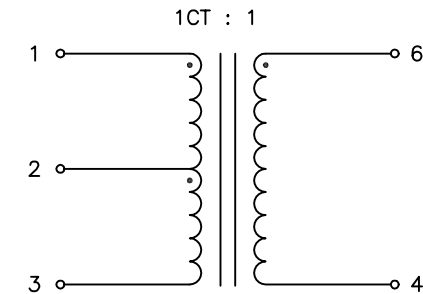
FREQUENCY	ATTENUATION(S21)
50 KHz	3.0 dB MAX
100 KHz	1.5 dB MAX
1 MHz	0.8 dB MAX
5 MHz	0.8 dB MAX
120 MHz	0.8 dB MAX
160 MHz	1.3 dB MAX
200 MHz	2.0 dB MAX
300 MHz	2.5 dB MAX
450 MHz	3.4 dB MAX

RETURN LOSS:

FREQUENCY	ATTENUATION(S11)
100 KHz	8.0 dB MIN
400 KHz	18.0 dB MIN
1 MHz	24.0 dB MIN
5 MHz	28.0 dB MIN
10 MHz	25.0 dB MIN
30 MHz	22.0 dB MIN
80 MHz	14.5 dB MIN
120 MHz	11.5 dB MIN
180 MHz	8.5 dB MIN
200 MHz	8.0 dB MIN

NOTES: UNLESS OTHERWISE SPECIFIED

1. OPERATING TEMPERATURE: -40°C TO +85°C
2. STORAGE TEMPERATURE: -50°C TO +125°C
3. COMPLIANCE TO J-STD:
 - J-STD-002: SOLDERABILITY AT REFLOW PEAK TEMPERATURE OF 245°C
 - J-STD-020: MSL 1, NO MOISTURE SENSITIVE
 - J-STD-075: R6, 250°C MAXIMUM THROUGH REFLOW SOLDER
4. DIMENSIONS ARE IN INCHES.
 - TOLERANCE:
 - .XX= ±.01
 - .XXX= ±.005
5. OPTIONAL TAPE & REEL PACKAGING CAN BE ORDERED BY ADDING A "T" SUFFIX TO THE PART NUMBER. ie: CX2041ANLT



SCHEMATIC

© Copyright, 2014. Pulse Electronics Corp. All rights reserved. Pulse confidential & proprietary. (06/19/2014)

PRODUCT DESCRIPTION:

XFMR, RF, SGL, RAC, 1:1CT, .05-450M, CAP

SHEET:

1 OF 2

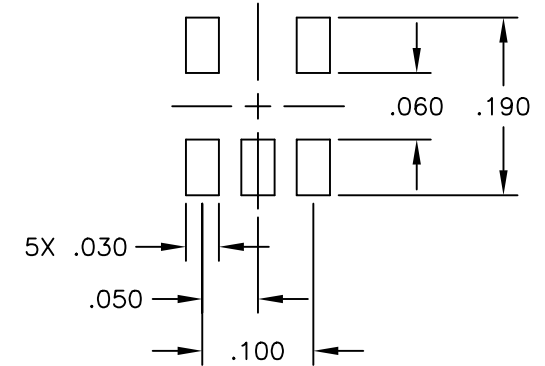
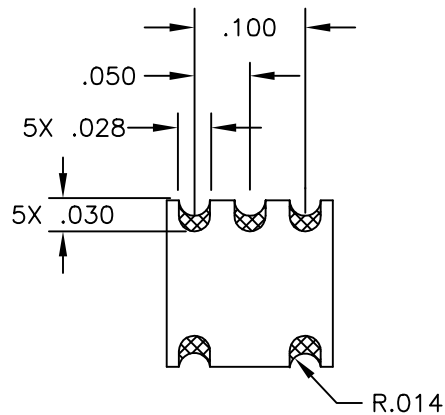
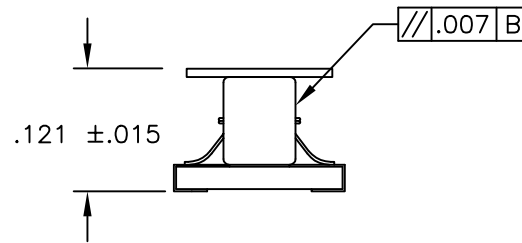
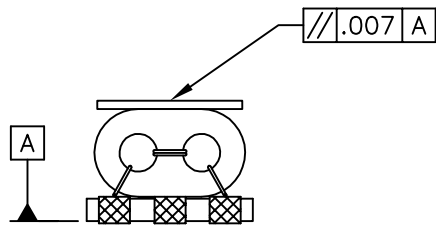
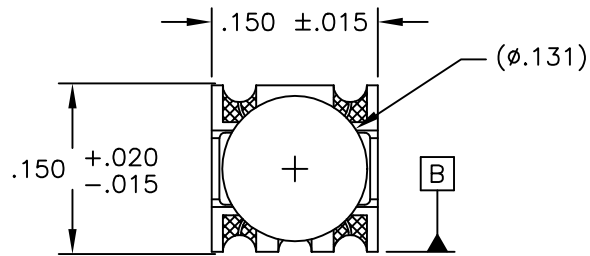
PART NO.

CX2041ANL

DATASHEET REV.

A

MECHANICAL SPECIFICATIONS:



SUGGESTED LAND PATTERN

© Copyright, 2014. Pulse Electronics Corp. All rights reserved. Pulse confidential & proprietary. (06/19/2014)

PRODUCT DESCRIPTION:

XFMR, RF, SGL, RAC, 1:1CT, .05-450M, CAP

SHEET:

2 OF 2

PART NO.

CX2041ANL

DATASHEET REV.

A