



Chipsmall Limited consists of a professional team with an average of over 10 year of expertise in the distribution of electronic components. Based in Hongkong, we have already established firm and mutual-benefit business relationships with customers from,Europe,America and south Asia,supplying obsolete and hard-to-find components to meet their specific needs.

With the principle of “Quality Parts,Customers Priority,Honest Operation,and Considerate Service”,our business mainly focus on the distribution of electronic components. Line cards we deal with include Microchip,ALPS,ROHM,Xilinx,Pulse,ON,Everlight and Freescale. Main products comprise IC,Modules,Potentiometer,IC Socket,Relay,Connector.Our parts cover such applications as commercial,industrial, and automotives areas.

We are looking forward to setting up business relationship with you and hope to provide you with the best service and solution. Let us make a better world for our industry!



Contact us

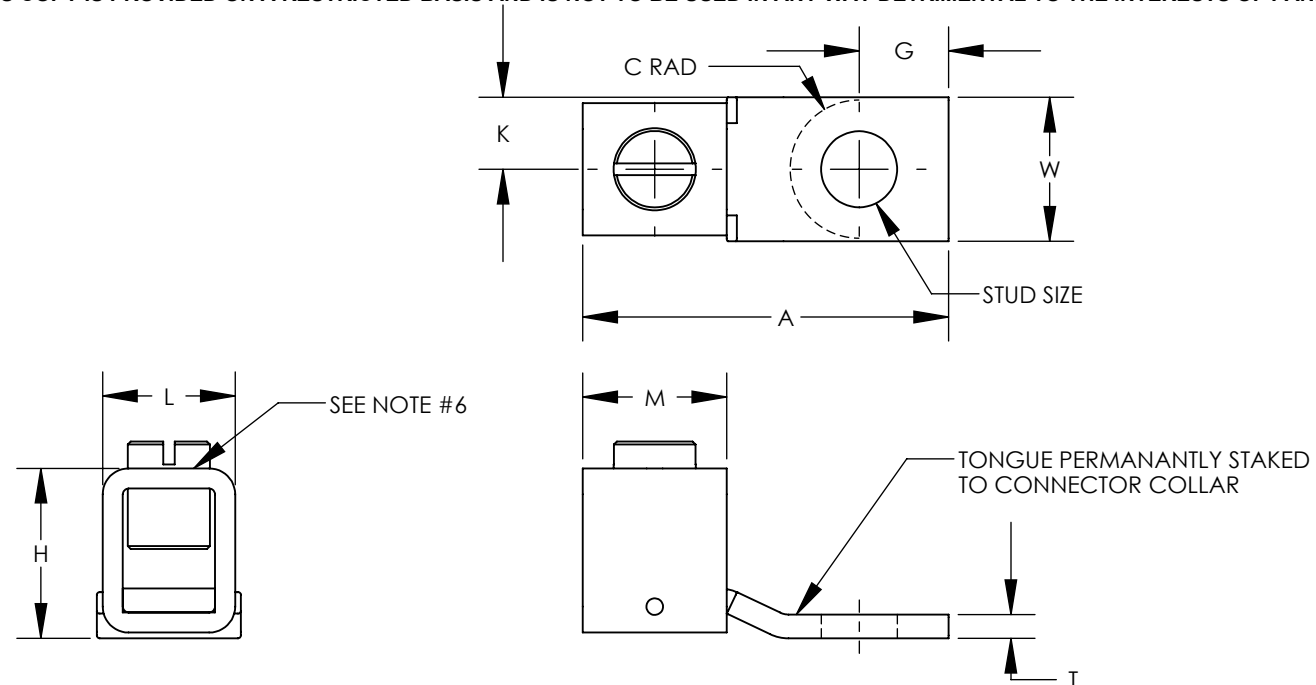
Tel: +86-755-8981 8866 Fax: +86-755-8427 6832

Email & Skype: info@chipsmall.com Web: www.chipsmall.com

Address: A1208, Overseas Decoration Building, #122 Zhenhua RD., Futian, Shenzhen, China



THIS COPY IS PROVIDED ON A RESTRICTED BASIS AND IS NOT TO BE USED IN ANY WAY DETRIMENTAL TO THE INTERESTS OF PANDUIT CORP.



NOTES:

- MATERIAL:
BODY - COPPER
◇ DENOTES BODY IS TIN PLATED COPPER
SCREW - STEEL, ZINC PLATED
- UL LISTED & CSA CERTIFIED FOR USE UP TO 600V & TEMPERATURE RATED 90°C. **CX125 & CX225 PARTS ARE cULus.**
- RATED FOR USE WITH COPPER STRANDED CODE CONDUCTOR ONLY
- THESE PARTS ARE RoHS COMPLIANT
- SEE PACKAGING LABEL FOR TIGHTENING TORQUE INFORMATION
- PROFILE OF COLLAR MAY VARY BETWEEN CURVED AND FLAT.
- PKG QTY:
C = 100
D = 250
Q = 25



PANDUIT PART NUMBER	WIRE RANGE COPPER	CURRENT RATING (AMPS)	STUD SIZE IN	DIMENSIONS - IN [mm] ± .02 [0.5]									HEX SIZE*
				G	W	K	A	M	T	H	L	C (MAX)	
CX125-14SL-QY	#4 AWG - #1/0 AWG	125	1/4"	0.43 [10.9]	0.62 [15.7]	0.31 [7.9]	1.53 [38.9]	0.62 [15.7]	0.13 [3.3]	0.77 [19.6]	0.57 [14.5]	0.41 [10.4]	SLOTTED
◇ CX125-56SLT-QY	#4 AWG - #1/0 AWG	125	5/16"	0.43 [10.9]	0.62 [15.7]	0.31 [7.9]	1.53 [38.9]	0.62 [15.7]	0.13 [3.3]	0.77 [19.6]	0.57 [14.5]	0.41 [10.4]	SLOTTED
CX225-56HKR-Q	#2 AWG - #4/0 AWG	225	5/16"	0.56 [14.2]	.99 [25.2]	0.50 [12.7]	2.19 [55.6]	1.00 [25.4]	0.13 [3.3]	1.13 [28.7]	0.85 [21.6]	0.50 [12.7]	7/32
◇ CX225-56HKRT-Q	#2 AWG - #4/0 AWG	225	5/16"	0.56 [14.2]	.99 [25.2]	0.50 [12.7]	2.19 [55.6]	1.00 [25.4]	0.13 [3.3]	1.13 [28.7]	0.85 [21.6]	0.50 [12.7]	7/32
◇ CX225-38HKRT-Q	#2 AWG - #4/0 AWG	225	3/8"	0.56 [14.2]	.99 [25.2]	0.50 [12.7]	2.19 [55.6]	1.00 [25.4]	0.13 [3.3]	1.13 [28.7]	0.85 [21.6]	0.50 [12.7]	7/32

* HEX STYLE & SIZE MAY DIFFER FROM CHART. DIFFERENCE IN SIZE WILL NOT AFFECT FIT, FORM, OR FUNCTION OF PART

REV	DATE	BY	CHK	APR	DESCRIPTION	ECN
19	7/17	JHNU	JHNU	RGB	REMOVED CX35, CX70 PART NUMBERS, REPLACED BY CXS35, CXS70 PART NUMBERS - DRAWING 12J038AQ-DC	N41664BA-C41664
18	6/17	JHNU	JHNU	RGB	REVISED T DIMENSION FOR CX225-56HKR/56HKRT: .13 WAS .11	N41664BA-C41664
17	3/17	JHNU	JHNU	RGB	REVISED T DIMENSION FOR CX225-38T: .13 WAS .12	N41664BA-C41664
16	8/16	JHNU	JHNU	RGB	ADDED CX225-56HKR-Q, CX225-56HKRT-Q, CX225-38HKRT-Q REMOVED CX225-56HK-QY, CX225-56HKT-QY, CX225-38HKT-QY	N41664BA-C41664
15	10/15	JHNU	JHNU	RGB	REVISED NOTES TO SPECIFY CX125/CX225 ARE cULus	N41664BA-C41664
14	11/13	JHNU	JHNU	RGB	REVISED "T" DIMENSION FOR CX125-14SL, CX125-56SLT: 0.13 [3.3] WAS 0.11 [2.7]	N41664BA-C41664
13	9/13	JHNU	JHNU	RGB	REVISED "L" DIMENSION FOR CX35-36: 0.34 [8.63] WAS 0.38 [9.7]	N41664BA-C41664
12	4/13	JHNU	JHNU	RGB	REPLACED MISSING "A" DIMENSION REVISED HEX SIZE FOR CX225: 3/16 WAS 9/16	N41664BA-C41664
11	2/13	JHNU	JHNU	RGB	REVISED TITLE BLOCK	N41664BA-C41664

TITLE CX SERIES COPPER MECHANICAL CONNECTORS CUSTOMER DRAWING	
ITEM REVISION NAME N41664BA-C41664/19	PANDUIT
DATASET FILE NAME C41664/19.SLDDRW	
UNLESS OTHERWISE SPECIFIED, DIMENSIONAL TOLERANCES ARE: IN [mm] .X ± .XXX ± .XX ± ANGLES ±	
THIRD ANGLE PROJECTION	MATERIAL SEE NOTES
DRAWN BY JHNU	DRAWING NUMBER C41664
DATE 3/06	SCALE NONE
CHK JHNU	SHEET 1 OF 1
SIZE B	