



Chipsmall Limited consists of a professional team with an average of over 10 year of expertise in the distribution of electronic components. Based in Hongkong, we have already established firm and mutual-benefit business relationships with customers from,Europe,America and south Asia,supplying obsolete and hard-to-find components to meet their specific needs.

With the principle of “Quality Parts,Customers Priority,Honest Operation,and Considerate Service”,our business mainly focus on the distribution of electronic components. Line cards we deal with include Microchip,ALPS,ROHM,Xilinx,Pulse,ON,Everlight and Freescale. Main products comprise IC,Modules,Potentiometer,IC Socket,Relay,Connector.Our parts cover such applications as commercial,industrial, and automotives areas.

We are looking forward to setting up business relationship with you and hope to provide you with the best service and solution. Let us make a better world for our industry!



Contact us

Tel: +86-755-8981 8866 Fax: +86-755-8427 6832

Email & Skype: info@chipsmall.com Web: www.chipsmall.com

Address: A1208, Overseas Decoration Building, #122 Zhenhua RD., Futian, Shenzhen, China



MESSRS :

Specification Comparison

CUSTOMER'S PRODUCT NAME:

TDK PRODUCT NAME: DC/AC INVERTER UNIT CXA-0547

TENTATIVE



TDK-Lambda Corporation

PREPARED BY	APPROVED BY	AUTHORIZED BY
<i>April 27th, 2010 K.Imai</i>	<i>April 27th, 2010 K.Yamaishi</i>	<i>April 27th, 2010 H.Masuoka</i>

DWG.No.

CTR-3911-X

The difference between CXA-0349 and CXA-0547.

*Product summary

CXA-0547 expands operating temperature range to $-20^{\circ}\text{C}\sim 70^{\circ}\text{C}$ compared with CXA-0349.

At the same time, all components is mounted by machine. So human error reduces and reliability is improved.

Input fuse rating is changed because the lamp impedance at low temperature is high.

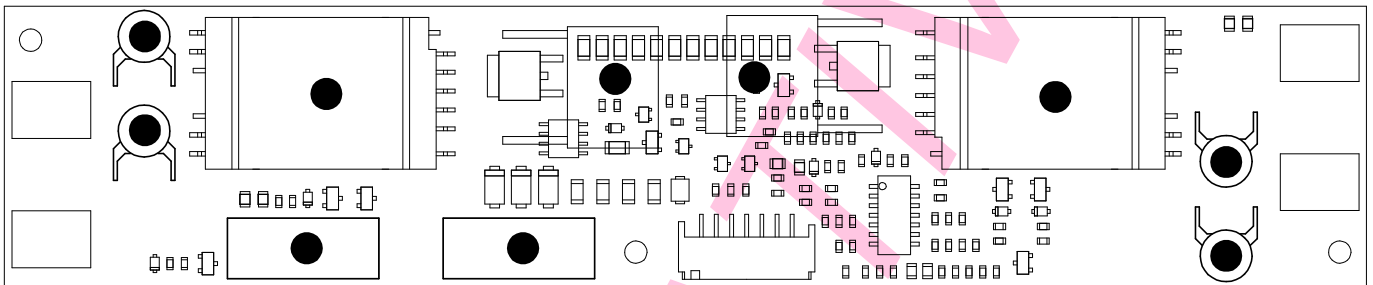
This product is expected stable supply to the customer by replacement of terminated components.

1.Appearance, dimension and pin configuration

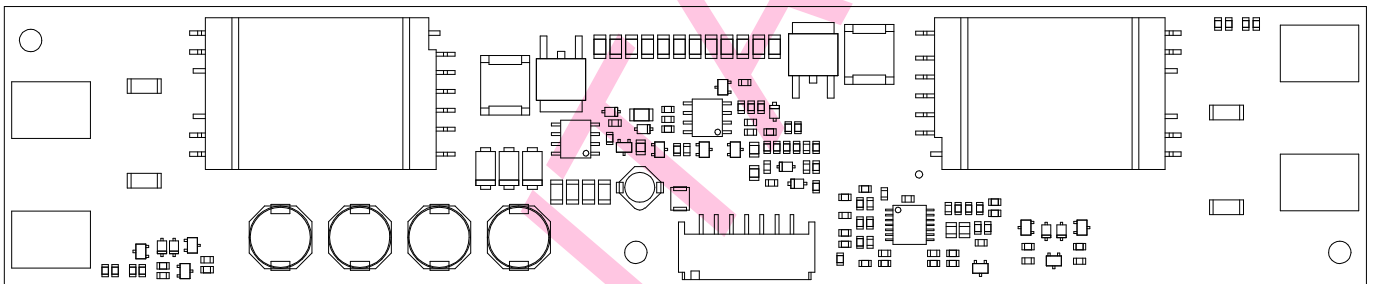
1-1.Appearance

The appearance of CXA-0547 is changed as follows because several component is changed from CXA-0349.

∴CXA-0349



∴CXA-0547



The CXA-0349 has several hand mount components indicated in ●.
All of components are mounted by machine in CXA-0547.

1-2.Dimension and Pin configuration

Dimension, Pin configuration, Mounting hole and Input Output connector are not changed.

P/N	X dimension	Y dimension	Z dimension	diameter of mounting hole	pitch of mounting hole
CXA-0349	180.0±0.5	37.0±0.5	12max	3.0±0.2	X: 80±0.3, 93±0.3 Y: 28±0.3
CXA-0547	↑	↑	↑	↑	↑

Unit in mm

P/N	Input Connector	Output Connector
CXA-0349	S7B-PH-SM4-TB(LF)(SN)	SM02B-BHSS-1-TB(LF)(SN)
CXA-0547	↑	↑

No.	MATERIALS NAME	QU	MATERIAL	REMARK
PRODUCT NAME or MODEL, TITLE				
DC-AC INVERTER UNIT CXA-0547				
NAME OF DRAWING		DRAWING No.		PAGE
Specification Comparison		CTR-3911-X		1

TDK-Lambda

2. Absolute Maximum Ratings

CXA-0547 expands operating temperature range to -20°C~70°C compared with CXA-0349.
 Except operating temperature range any specification is not changed.

Item	Symbol	CXA-0349	CXA-0547	Unit	Remark
Input Voltage	Vin	0~14.4	←	V	
	Vrmt	0~Vin	←	V	
	Vbr	0~Vin	←	V	
Load Resistance	RL	90	←	kΩ	
Operational Temperature range	Ta	-10~70	-20~70	°C	
Storage Temperature range	Ts	-30~85	←	°C	
Operational Humidity range	Ha	0~95	←	%RH.	Maximum wet bulb temperature is 38°C. No dew.

3. Electrical Characteristics

The maximum current specification changes to 2.2A from 2A because input current is increase in low temperature operation.

Item	Symbol	Condition					Specification						Unit
		Vin (V)	Vrmt (V)	Rbr(kΩ)/ Vbr(V)	Ta (°C)	RL1,2,3,4 (kΩ)	CXA-0349			CXA-0547			
							MIN.	TYP.	MAX.	MIN.	TYP.	MAX.	
Output Current (Maximum Brightness)	Iout	12±1.2	5±0.25	0 / 0	*1	80	6.2	6.9	7.6	←	←	←	mA rms
		12±0.05	5±0.25	0 / 0	23 ±5	80	6.4	6.9	7.4	←	←	←	
Output Current (Minimum Brightness)		12±1.2	5±0.25	50 / 2.5	*1	80	1.7	2.7	3.7	←	←	←	
Input Current1	Iin1	12±1.2	5±0.25	0 / 0	*1	80	-	1.6	2.0	←	←	2.2	A
Input Current2	Iin2	12±1.2	0±0.25	0 / 0	*1	80	-	0	1	←	←	←	mA
Oscillation Frequency	F1	12±1.2	5±0.25	0 / 0	*1	80	40	45	50	←	←	←	kHz
PWM Dimming Frequency	F2	12±1.2	5±0.25	50 / 2.5	*1	80	120	140	160	←	←	←	Hz
Open Output Voltage	Vopen	10.8±0.05	5±0.25	0 / 0	*1	∞	1800	2100	2400	←	←	←	Vrms
Warning Output	Vst	12±1.2	5±0.25	0 / 0	*1	RL1=∞ RL2,3,4=80	4.5	5.1	5.5	←	←	←	V
		12±1.2	5±0.25	0 / 0	*1	RL2=∞ RL1,3,4=80	4.5	5.1	5.5	←	←	←	
		12±1.2	5±0.25	0 / 0	*1	RL3=∞ RL1,2,4=80	4.5	5.1	5.5	←	←	←	
		12±1.2	5±0.25	0 / 0	*1	RL4=∞ RL1,2,3=80	4.5	5.1	5.5	←	←	←	
		12±1.2	5±0.25	0 / 0	*1	80	-	0.1	0.5	←	←	←	

*1 The ambient temperature of CXA-0349 is -10~70°C and CXA-0547 is -20~70°C.

No.	MATERIALS NAME	QU	MATERIAL	REMARK
PRODUCT NAME or MODEL, TITLE				
DC-AC INVERTER UNIT CXA-0547				
NAME OF DRAWING			DRAWING No.	
Specification Comparison			CTR-3911-X	
TDK-Lambda			PAGE	
			2	