



Chipsmall Limited consists of a professional team with an average of over 10 year of expertise in the distribution of electronic components. Based in Hongkong, we have already established firm and mutual-benefit business relationships with customers from,Europe,America and south Asia,supplying obsolete and hard-to-find components to meet their specific needs.

With the principle of “Quality Parts,Customers Priority,Honest Operation,and Considerate Service”,our business mainly focus on the distribution of electronic components. Line cards we deal with include Microchip,ALPS,ROHM,Xilinx,Pulse,ON,Everlight and Freescale. Main products comprise IC,Modules,Potentiometer,IC Socket,Relay,Connector.Our parts cover such applications as commercial,industrial, and automotives areas.

We are looking forward to setting up business relationship with you and hope to provide you with the best service and solution. Let us make a better world for our industry!



Contact us

Tel: +86-755-8981 8866 Fax: +86-755-8427 6832

Email & Skype: info@chipsmall.com Web: www.chipsmall.com

Address: A1208, Overseas Decoration Building, #122 Zhenhua RD., Futian, Shenzhen, China



Power Supplies

DC to AC Inverters

Connector type, Dimming, 2W, For 1 Bulb

CXA Series CXA-K0505-VJL

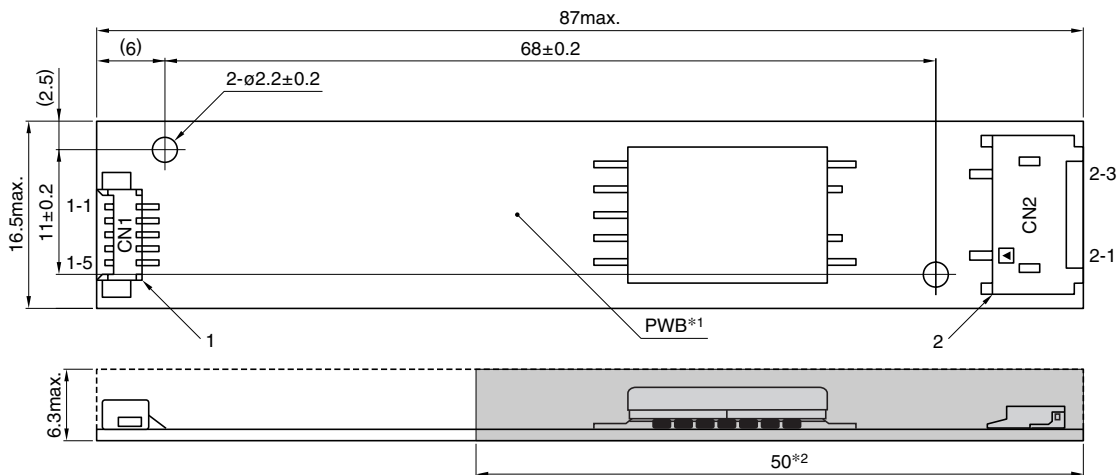
FEATURES

- The CXA-K0505-VJL is an inverter for cold cathode fluorescent lamps and features a built-in dimmer.
- Because they employ advanced output current control, fluctuations in input voltage, load, and distributed capacitance have virtually no effect on brightness.
- Output open and short circuit conditions result in no damage, heat generation, or other difficulties.
- The bottom of the board has a flat structure that facilitates insulation.
- These parts are ultra-thin with a maximum thickness of only 6.3mm.
- Safe design that includes a built-in overcurrent protection element.

TEMPERATURE AND HUMIDITY RANGES

Temperature range (°C)	Operating	0 to +60
	Storage	-30 to +85
Humidity range(%)RH		95max.
		[Maximum wet-bulb temperature 38°C]

SHAPES AND DIMENSIONS



*1 Substrate (PWB: Printed wiring board): Flame retardant material 94V-0 (FR-4 or CEM-3) t=0.8mm

*2 : High-voltage generator (The entire surface within a range of 50mm away from the end of the base in the output)

Weight: 9g typ.

Dimensions in mm

	Connector manufacturer's company and type			Symbol
1	Input connector	Morex Japan Co., Ltd.	53261-0590	CN1
2	Output connector	Japan Solderless Terminal Co., Ltd.	SM02(8.0)B-BHS-1	CN2

TERMINAL NUMBERS AND FUNCTIONS

CN1

Terminal No.	Functions	Symbol
CN1-1	Input voltage Edc: 5 to 12V 5V[nom.]	V _{in}
CN1-2	0V	GND
CN1-3	Remote voltage Edc 0V: off/5 to 12V:on	V _{rmt}
CN1-4	Brightness dimmer voltage* Edc: 0 to 3V(Maximum brightness on 0V)	V _{br}
CN1-5	Used in the internal circuits, do not connect.	N.C.

* Brightness can be controlled by adjusting V_{br} within a range of 0 to 3V.

CN2

Terminal No.	Functions	Symbol
CN2-1	Output[High voltage] I _{rms} 2 to 5mA	V _{HIGH}
CN2-2	—	N.C.
CN2-3	Output[Low voltage] (2V)	V _{LOW}

Power Supplies

CXA Series CXA-K0505-VJL

DC to AC Inverters

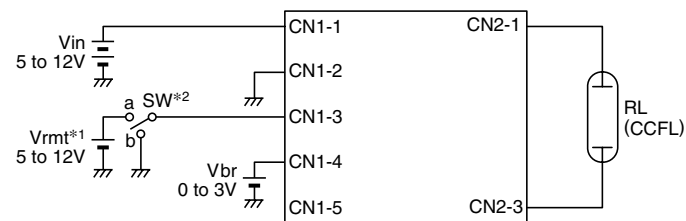
Connector type, Dimming, 2W, For 1 Bulb

ELECTRICAL CHARACTERISTICS

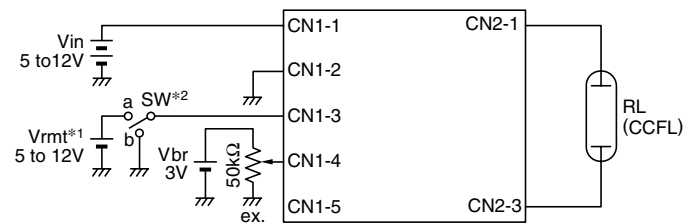
Items	Unit	Symbol	Specifications			Conditions		Ta(°C)	RL(kΩ)	Brightness
			min.	typ.	max.	Vin(V)	Vbr(V)			
Output current I _{rms}	mA	I _{out}	4.1	5	5.9	5 to 12	0	0 to +50	60 to 80	Maximum
			4.5	5	5.5	5	0	23±5	70	Maximum
			1.5	2	2.5	5	3	23±5	140	Minimum
Input current I _{dc}	A	I _{in}	—	0.5	0.66	5 to 12	0	0 to +50	60 to 80	
Oscillation frequency	kHz	FL	35	40	45	5 to 12	0	0 to +50	60 to 80	
Open circuit output voltage E _{rms}	V	V _{open}	900	1100	—	5 to 12	0	0 to +50	∞	

TYPICAL CONNECTIONS

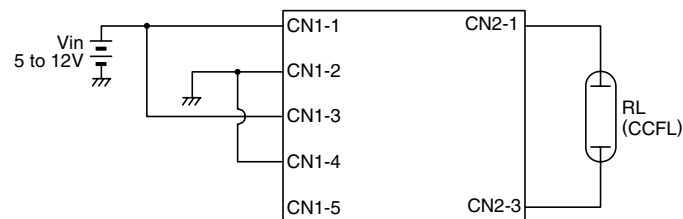
EXAMPLE OF VOLTAGE DIMMER CONTROL



EXAMPLE OF POTENTIOMETER DIMMER CONTROL



NO DIMMER CONTROL



*1 V_{rmt} (remote voltage) shall be ON after V_{in} was ON.

*2 SW a:on, b:off

BRIGHTNESS DIMMER VOLTAGE-OUTPUT CURRENT CHARACTERISTICS

