



Chipsmall Limited consists of a professional team with an average of over 10 year of expertise in the distribution of electronic components. Based in Hongkong, we have already established firm and mutual-benefit business relationships with customers from,Europe,America and south Asia,supplying obsolete and hard-to-find components to meet their specific needs.

With the principle of “Quality Parts,Customers Priority,Honest Operation,and Considerate Service”,our business mainly focus on the distribution of electronic components. Line cards we deal with include Microchip,ALPS,ROHM,Xilinx,Pulse,ON,Everlight and Freescale. Main products comprise IC,Modules,Potentiometer,IC Socket,Relay,Connector.Our parts cover such applications as commercial,industrial, and automotives areas.

We are looking forward to setting up business relationship with you and hope to provide you with the best service and solution. Let us make a better world for our industry!



## Contact us

Tel: +86-755-8981 8866 Fax: +86-755-8427 6832

Email & Skype: [info@chipsmall.com](mailto:info@chipsmall.com) Web: [www.chipsmall.com](http://www.chipsmall.com)

Address: A1208, Overseas Decoration Building, #122 Zhenhua RD., Futian, Shenzhen, China



# Power Supplies

## DC to AC Inverters

### Connector type, Dimming, 4W, For 1 Bulb

## CXA Series CXA-L0605-VJL

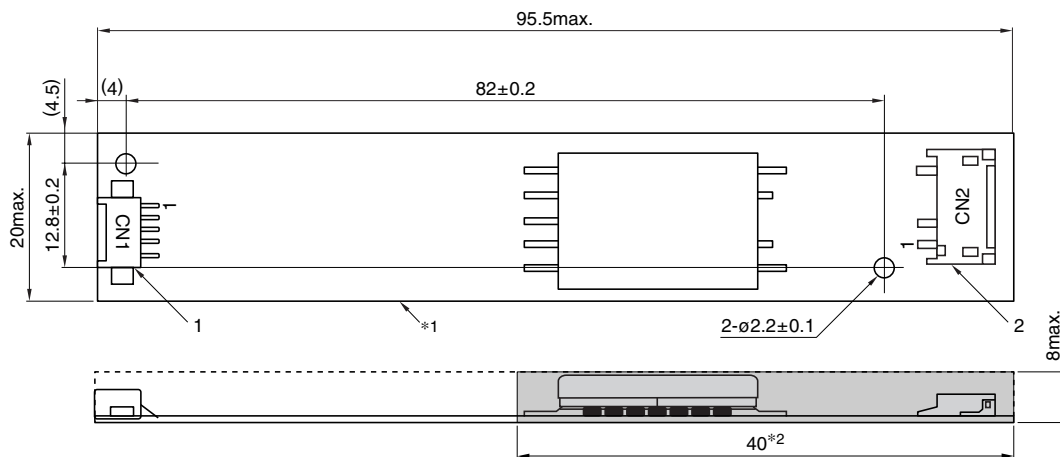
### FEATURES

- The CXA-L0605-VJL is an inverter for cold cathode fluorescent lamps and features a built-in dimmer.
- Because they employ advanced output current control, fluctuations in input voltage, load, and distributed capacitance have virtually no effect on brightness.
- Output open and short circuit conditions result in no damage, heat generation, or other difficulties.
- Safe design that includes a built-in overcurrent protection element.
- Insulation is simplified due to flat backside surface of board.

### TEMPERATURE AND HUMIDITY RANGES

Temperature range (°C)	Operating	0 to +60
	Storage	-20 to +85
Humidity range(%)RH		95max.
		[Maximum wet-bulb temperature 38°C]

### SHAPES AND DIMENSIONS



\*1 Substrate(PWB: Printed wiring board): Flame retardant material UL94V-0(FR-4 or CEM-3) t=1mm

\*2 : High-voltage generator (The entire surface within a range of 40mm away from the end of the base in the output)

Weight: 14.5g typ.

Dimensions in mm

Connector manufacturer's company and type				Symbol
1	Input connector	Morex Japan Co., Ltd.	53261-0590	CN1
2	Output connector	Japan Solderless Terminal Co., Ltd.	SM02(8.0)B-BHS-1	CN2

### TERMINAL NUMBERS AND FUNCTIONS

#### CN1

Terminal No.	Functions	Symbol
CN1-1	Input voltage Edc: 4.75 to 5.25V 5V[nom.]	Vin
CN1-2	0V	GND
CN1-3	Remote voltage Edc 0V: off/5 to 5.25V:on	Vrmt
CN1-4	Brightness dimmer voltage* Edc: 0 to 3V(Maximum brightness on 0V)	Vbr
CN1-5	Used in the internal circuits, do not connect.	N.C.

\* Brightness can be controlled by adjusting Vbr within a range of 0 to 3V.

#### CN2

Terminal No.	Functions	Symbol
CN2-1	Output[High voltage] Irms 3 to 6mA	VHIGH
CN2-2	—	N.C.
CN2-3	Output[Low voltage] (2V)	VLOW

# Power Supplies

## CXA Series CXA-L0605-VJL

DC to AC Inverters

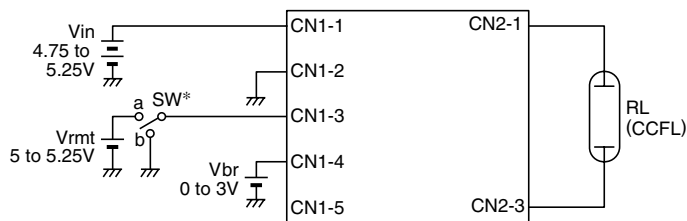
Connector type, Dimming, 4W, For 1 Bulb

### ELECTRICAL CHARACTERISTICS

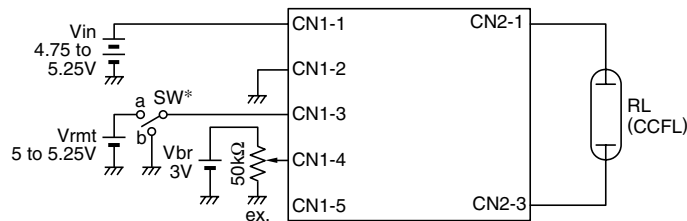
Items	Unit	Symbol	Specifications			Conditions		Ta(°C)	RL(kΩ)	Brightness
			min.	typ.	max.	Vin(V)	Vbr(V)			
Output current I <sub>rms</sub>	mA	I <sub>out</sub>	5.3	6	6.7	5±0.25	0	0 to 60	70 to 90	Maximum
			5.4	6	6.6	5±0.25	0	23±5	80	Maximum
			2.5	3	3.5	5±0.25	3	0 to 60	226	Minimum
Input current I <sub>dc</sub>	A	I <sub>in</sub>	—	0.7	0.8	5	0	23±5	80	
Oscillation frequency	kHz	FL	35	45	55	5±0.25	0	0 to 60	70 to 90	
Open circuit output voltage E <sub>rms</sub>	V	V <sub>open</sub>	1500	1700	—	5±0.25	0	0 to 60	∞	

### TYPICAL CONNECTIONS

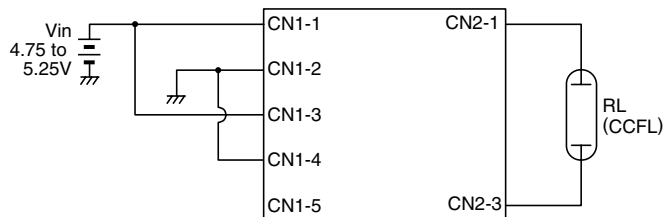
#### EXAMPLE OF VOLTAGE DIMMER CONTROL



#### EXAMPLE OF POTENTIOMETER DIMMER CONTROL



#### NO DIMMER CONTROL



\* SW a:on, b:off

### BRIGHTNESS DIMMER VOLTAGE-OUTPUT CURRENT CHARACTERISTICS

