



Chipsmall Limited consists of a professional team with an average of over 10 year of expertise in the distribution of electronic components. Based in Hongkong, we have already established firm and mutual-benefit business relationships with customers from,Europe,America and south Asia,supplying obsolete and hard-to-find components to meet their specific needs.

With the principle of “Quality Parts,Customers Priority,Honest Operation,and Considerate Service”,our business mainly focus on the distribution of electronic components. Line cards we deal with include Microchip,ALPS,ROHM,Xilinx,Pulse,ON,Everlight and Freescale. Main products comprise IC,Modules,Potentiometer,IC Socket,Relay,Connector.Our parts cover such applications as commercial,industrial, and automotives areas.

We are looking forward to setting up business relationship with you and hope to provide you with the best service and solution. Let us make a better world for our industry!



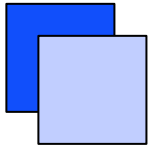
## Contact us

Tel: +86-755-8981 8866 Fax: +86-755-8427 6832

Email & Skype: info@chipsmall.com Web: www.chipsmall.com

Address: A1208, Overseas Decoration Building, #122 Zhenhua RD., Futian, Shenzhen, China





# DC-AC INVERTER UNIT

## CXA-L0712-VJL(5W SINGLE OUTPUT WITH DIMMING FUNCTION)

### DESCRIPTION :

This low profile DC to AC Inverter is developed for single lamp, low power LCD back-light. Application includes industrial PC and LCD monitor.

Applicable LCD; 5 to 15 inches single lamp type

- Lamp Voltage 600Vrms
- Lamp Current 7mArms
- Lamp Start Up Voltage 1600Vrms (Vin : 12V)

### FEATURES :

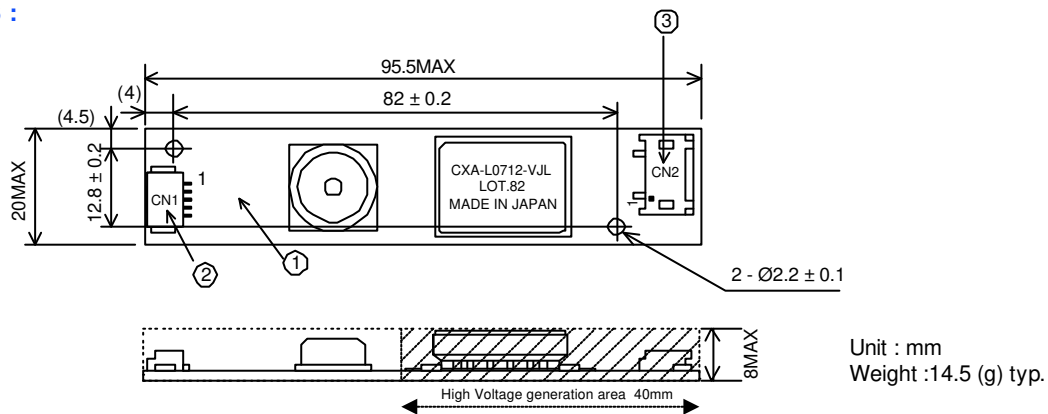
- Current feedback circuit
- High efficiency
- Low noise with voltage resonant circuit
- Regulated output current



### TEMPERATURE & HUMIDITY :

- Operating Temperature Range 0 °C ~ +60 °C
- Storage Temperature Range -30 °C ~ +85 °C
- Humidity 95 %RH max

### DIMENSIONS :



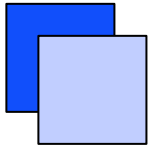
Note : Please use minimum of 2mm clearance (all directions) between inverter high voltage area (as marked above) and any conductors.

No.	Part Description	Qty.	Note	
1	PWB	1	UL94V-0	t=1.0mm
2	Connector CN1	1	53261-0590	(Molex)
3	Connector CN2	1	SM02(8.0)B-BHS-1	(JST)

CN1 : 53261-0590 (Molex)				CN2 : SM02(8.0)B-BHS-1 (JST)			
Pin	Symbol	Note		Pin	Symbol	Note	
CN1-1	Vin	9.6 ~ 15V		CN2-1	Vhigh	600Vrms (6mArms)	
CN1-2	GND	0 V		CN2-2	N.C.	-	
CN1-3	Vrmt	0V ~ 0.4 V : OFF 2.5V ~ 15V : ON		CN2-3	Vlow	(0.6V)	
CN1-4	Vbr	0 ~ 2V					
CN1-5	N.C.	For an internal circuit use. Don't connect.					

General Information Tel : +81-3-5201-7206 (Japan)  
Tel : +1-847-390-4439 (USA)  
Tel : +44-118-921-6206 (EU)

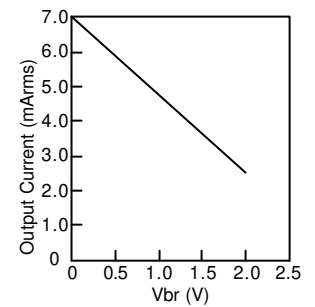
All specification are subject to change without notice.



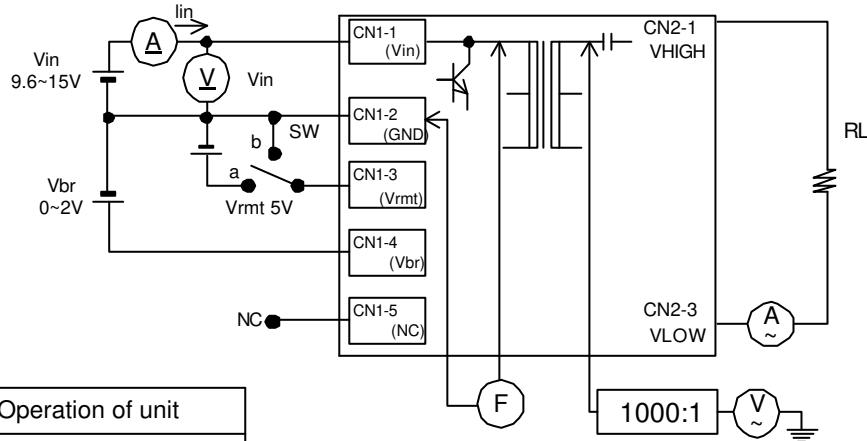
## CXA-L0712-VJL(5W SINGLE OUTPUT WITH DIMMING FUNCTION)

### ELECTRICAL CHARACTERISTICS :

Parameters	Symbol	Conditions					Specifications			Unit	Note
		Vin (V)	Vrmt(V)	Vbr (V)	Ta (°C)	RL (kΩ)	min.	typ.	max.		
Output Current	Iout	9.6 ~ 15	5	0	0 ~ +60	100 ± 2	6.5	7.0	7.5	mArms	Max Brightness.
		12	5	2	0 ~ +60	200 ± 2	2.0	2.5	3.0	mArms	Min Brightness.
Input Current	Iin	12	5	0	0 ~ +60	100 ± 2	-	0.52	0.6	Adc	
Frequency	FL	12	5	0	0 ~ +60	100 ± 2	50	55	60	kHz	
Open Voltage	Vopen	9.6	5	0	0 ~ +60	∞	1500	1600	-	Vrms	



### TEST CIRCUIT :



SW	Operation of unit
a	Operation
b	Non operation