



Chipsmall Limited consists of a professional team with an average of over 10 year of expertise in the distribution of electronic components. Based in Hongkong, we have already established firm and mutual-benefit business relationships with customers from,Europe,America and south Asia,supplying obsolete and hard-to-find components to meet their specific needs.

With the principle of “Quality Parts,Customers Priority,Honest Operation,and Considerate Service”,our business mainly focus on the distribution of electronic components. Line cards we deal with include Microchip,ALPS,ROHM,Xilinx,Pulse,ON,Everlight and Freescale. Main products comprise IC,Modules,Potentiometer,IC Socket,Relay,Connector.Our parts cover such applications as commercial,industrial, and automotives areas.

We are looking forward to setting up business relationship with you and hope to provide you with the best service and solution. Let us make a better world for our industry!



Contact us

Tel: +86-755-8981 8866 Fax: +86-755-8427 6832

Email & Skype: info@chipsmall.com Web: www.chipsmall.com

Address: A1208, Overseas Decoration Building, #122 Zhenhua RD., Futian, Shenzhen, China



Power Supplies

DC to AC Inverters

On-board type, Non-dimming, 4.5W, For 1 and 2 Bulbs

CXA Series CXA-L10A/L10L

FEATURES

- The CXA-L10 series inverters for 2-cold cathode fluorescent lamps support a wide range of CCFL devices and are characterized by highly stable output current.
- Employing a resonance-type push-pull circuit, these inverters deliver sine wave output with very low noise levels.
- Through the use of four different connection methods and combinations of 1 and 2 lamps, different output currents can be selected.
- Compact, lightweight printed circuit board design.
- High efficiency (typically 80%).

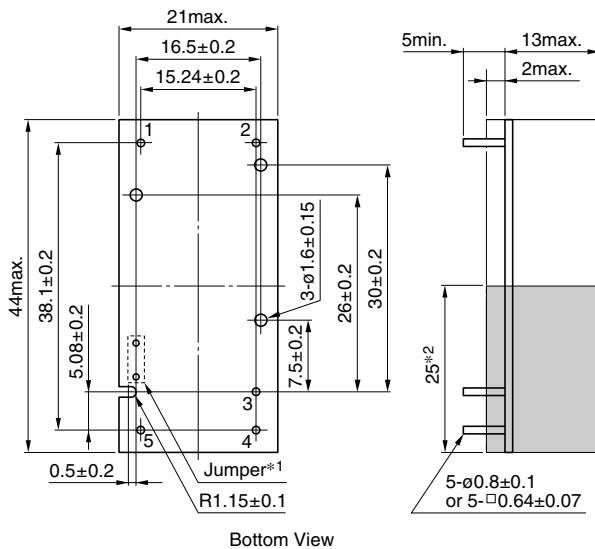
APPLICATIONS

Industrial and other equipment employing LCD panels, products employing small lamps, information terminal devices.

TEMPERATURE AND HUMIDITY RANGES

Temperature range (°C)	Operating	-10 to +60
	Storage	-20 to +85
Humidity range(%RH)		95max.
		[Maximum wet-bulb temperature 38°C]

SHAPES AND DIMENSIONS



Bottom View

*1 Terminal numbers 2 and 5 are connected by the jumper. Cut this jumper to let the secondary side float with respect to the primary side.

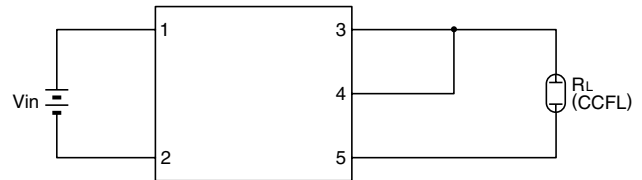
*2 : High-voltage generator (The entire surface within a range of 25mm away from the end of the base in the output)

Weight: 11g typ.

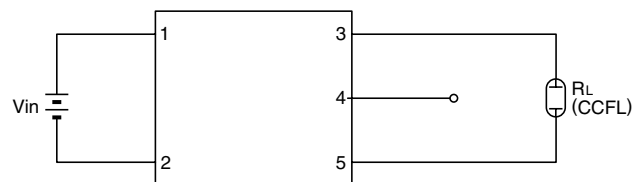
Dimensions in mm

CIRCUIT DIAGRAMS

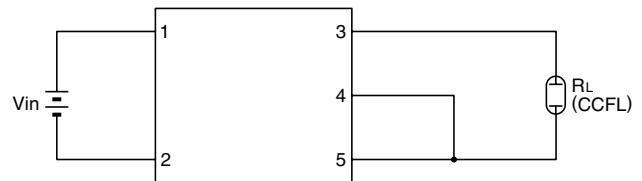
CONNECTION A



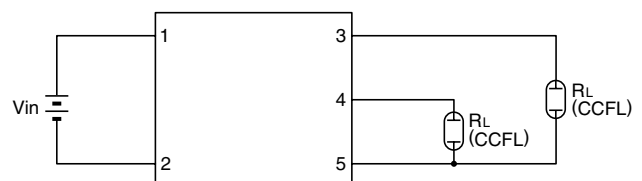
CONNECTION B



CONNECTION C



CONNECTION D



TERMINAL NUMBERS AND FUNCTIONS

Terminal No.	Functions	CXA-L10A	CXA-L10L	Symbol
1	Input voltage E _{dc}	0 to 6V	0 to 14.4V	V _{in}
2		5V[nom.]	12V[nom.]	GND
3	Output 1 [High voltage] I _{rms}	0V	0V	V _{HIGH1}
4	Output 2 [High voltage] I _{rms}	5mA	5mA	V _{HIGH2}
5	Output[Low voltage]	5mA	5mA	V _{LOW}

Power Supplies

CXA Series CXA-L10A/-L10L

DC to AC Inverters

On-board type, Non-dimming, 4.5W, For 1 and 2 Bulbs

ELECTRICAL CHARACTERISTICS

5V INPUT TYPE/CXA-L10A

Connections	Items	Unit	Symbol	Specifications			Conditions		
				min.	typ.	max.	Vin(V)	Ta(°C)	RL(kΩ)
A	Output current Irms	mA	Iout	9	10	11	5±1%	23±5	30
				8	10	12	5±5%	-10 to +60	23 to 37
	Input current Idc	A	Iin	—	0.8	1.2	5±5%	-10 to +60	23 to 37
	Oscillation frequency	kHz	FL	25	30	35	5±5%	-10 to +60	23 to 37
	Open circuit output voltage Erms	V	Vopen	800	900	—	5±5%	-10 to +60	∞
	Output power	W	Pout	—	—	4.5	5±5%	-10 to +60	—
B	Output current Irms	mA	Iout	5.2	6	6.6	5±1%	23±5	50
				4.6	6	7.2	5±5%	-10 to +60	38 to 62
	Input current Idc	A	Iin	—	0.51	0.77	5±5%	-10 to +60	38 to 62
	Oscillation frequency	kHz	FL	30	35	40	5±5%	-10 to +60	38 to 62
	Open circuit output voltage Erms	V	Vopen	800	900	—	5±5%	-10 to +60	∞
	Output power	W	Pout	—	—	2.7	5±5%	-10 to +60	—
C	Output current Irms	mA	Iout	4.5	5	5.6	5±1%	23±5	60
				4	5	6.1	5±5%	-10 to +60	45 to 75
	Input current Idc	A	Iin	—	0.45	0.68	5±5%	-10 to +60	45 to 75
	Oscillation frequency	kHz	FL	25	30	35	5±5%	-10 to +60	45 to 75
	Open circuit output voltage Erms	V	Vopen	800	900	—	5±5%	-10 to +60	∞
	Output power	W	Pout	—	—	2.25	5±5%	-10 to +60	—
D	Output current Irms	mA	Iout1	4.5	5	5.5	5±1%	23±5	60
			Iout2	4.5	5	5.5	5±1%	23±5	60
			Iout1	4	5	6	5±5%	-10 to +60	45 to 75
			Iout2	4	5	6	5±5%	-10 to +60	45 to 75
	Input current Idc	A	Iin	—	0.8	1.2	5±5%	-10 to +60	45 to 75
	Oscillation frequency	kHz	FL	25	30	35	5±5%	-10 to +60	45 to 75
	Open circuit output voltage Erms	V	Vopen	800	900	—	5±5%	-10 to +60	∞
	Output power	W	Pout	—	—	2.25×2	5±5%	-10 to +60	—

Power Supplies

CXA Series CXA-L10A/-L10L

DC to AC Inverters

On-board type, Non-dimming, 4.5W, For 1 and 2 Bulbs

ELECTRICAL CHARACTERISTICS

12V INPUT TYPE/CXA-L10L

Connections	Items	Unit	Symbol	Specifications			Conditions		
				min.	typ.	max.	Vin(V)	Ta(°C)	RL(kΩ)
A	Output current Irms	mA	Iout	9	10	11	12±1%	23±5	30
				8	10	12	12±5%	-10 to +60	23 to 37
	Input current Idc	A	Iin	—	0.32	0.48	12±5%	-10 to +60	23 to 37
	Oscillation frequency	kHz	FL	25	30	35	12±5%	-10 to +60	23 to 37
	Open circuit output voltage Erms	V	Vopen	800	900	—	12±5%	-10 to +60	∞
	Output power	W	Pout	—	—	4.5	12±5%	-10 to +60	—
B	Output current Irms	mA	Iout	5.3	6	6.7	12±1%	23±5	50
				4.7	6	7.3	12±5%	-10 to +60	38 to 62
	Input current Idc	A	Iin	—	0.2	0.3	12±5%	-10 to +60	38 to 62
	Oscillation frequency	kHz	FL	30	35	40	12±5%	-10 to +60	38 to 62
	Open circuit output voltage Erms	V	Vopen	800	900	—	12±5%	-10 to +60	∞
	Output power	W	Pout	—	—	2.7	12±5%	-10 to +60	—
C	Output current Irms	mA	Iout	4.5	5	5.6	12±1%	23±5	60
				4	5	6.1	12±5%	-10 to +60	45 to 75
	Input current Idc	A	Iin	—	0.18	0.27	12±5%	-10 to +60	45 to 75
	Oscillation frequency	kHz	FL	25	30	35	12±5%	-10 to +60	45 to 75
	Open circuit output voltage Erms	V	Vopen	800	900	—	12±5%	-10 to +60	∞
	Output power	W	Pout	—	—	2.25	12±5%	-10 to +60	—
D	Output current Irms	mA	Iout1	4.5	5	5.5	12±1%	23±5	60
			Iout2	4.5	5	5.5	12±1%	23±5	60
			Iout1	4	5	6	12±5%	-10 to +60	45 to 75
			Iout2	4	5	6	12±5%	-10 to +60	45 to 75
	Input current Idc	A	Iin	—	0.32	0.48	12±5%	-10 to +60	45 to 75
	Oscillation frequency	kHz	FL	25	30	35	12±5%	-10 to +60	45 to 75
	Open circuit output voltage Erms	V	Vopen	800	900	—	12±5%	-10 to +60	∞
	Output power	W	Pout	—	—	2.25×2	12±5%	-10 to +60	—

