



Chipsmall Limited consists of a professional team with an average of over 10 year of expertise in the distribution of electronic components. Based in Hongkong, we have already established firm and mutual-benefit business relationships with customers from,Europe,America and south Asia,supplying obsolete and hard-to-find components to meet their specific needs.

With the principle of “Quality Parts,Customers Priority,Honest Operation,and Considerate Service”,our business mainly focus on the distribution of electronic components. Line cards we deal with include Microchip,ALPS,ROHM,Xilinx,Pulse,ON,Everlight and Freescale. Main products comprise IC,Modules,Potentiometer,IC Socket,Relay,Connector.Our parts cover such applications as commercial,industrial, and automotives areas.

We are looking forward to setting up business relationship with you and hope to provide you with the best service and solution. Let us make a better world for our industry!



Contact us

Tel: +86-755-8981 8866 Fax: +86-755-8427 6832

Email & Skype: info@chipsmall.com Web: www.chipsmall.com

Address: A1208, Overseas Decoration Building, #122 Zhenhua RD., Futian, Shenzhen, China



Power Supplies

CXA Series CXA-M1212-RJL

DC to AC Inverters

Connector type, Dimming, 5W, For 2 Bulbs

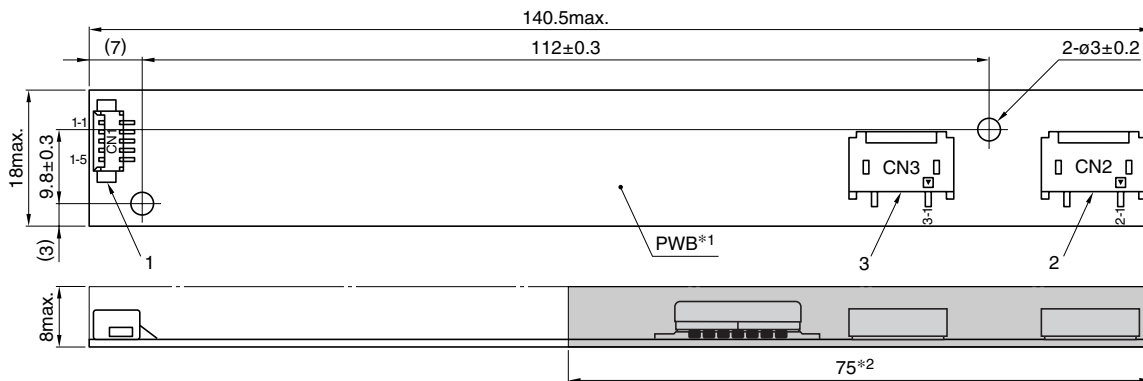
FEATURES

- The CXA-M1212-RJL is an inverter for cold cathode fluorescent lamps and features a built-in dimmer.
- Because they employ advanced output current control, fluctuations in input voltage, load, and distributed capacitance have virtually no effect on brightness.
- Output open and short circuit conditions result in no damage, heat generation, or other difficulties.
- Safe design that includes a built-in overcurrent protection element.
- Insulation is simplified due to flat backside surface of board.

TEMPERATURE AND HUMIDITY RANGES

Temperature range (°C)	Operating	0 to +60
	Storage	-30 to +85
Humidity range(%)RH	95max. [Maximum wet-bulb temperature 38°C]	

SHAPES AND DIMENSIONS



*1 Substrate (PWB: Printed wiring board): Flame retardant material UL94V-0 (FR-4 or CEM-3) $t=1\text{mm}$
 *2 : High-voltage generator (The entire surface within a range of 75mm away from the end of the base in the output)

Weight: 15.5g typ.

Dimensions in mm

	Connector manufacturer's company and type			Symbol
1	Input connector	Morex Japan Co., Ltd.	53261-0590	CN1
2	Output connector	Japan Solderless Terminal Co., Ltd.	SM02(8.0)B-BHS-1	CN2
3	Output connector	Japan Solderless Terminal Co., Ltd.	SM02(8.0)B-BHS-1	CN3

TERMINAL NUMBERS AND FUNCTIONS

No. CN1

Terminal No.	Functions	Symbol
CN1-1	Input voltage Edc: 9.6 to 14.4V 12V[nom.]	V _{in}
CN1-2	0V	GND
CN1-3	Remote voltage Edc 0V: off/5 to 14.4V: on	V _{rmt}
CN1-4	Brightness dimmer voltage* Edc: 0 to 50kΩ	VR
CN1-5	(Maximum brightness on 50kΩ)	

* Brightness can be controlled by adjusting VR within a range of 0 to 50kΩ.

CN2

Terminal No.	Functions	Symbol
CN3-1	Output 1[High voltage] I _{rms} 2 to 6mA	V _{HIGH1}
CN3-2	—	N.C.
CN3-3	Output 1[Low voltage] (2V)	V _{LOW1}

CN3

Terminal No.	Functions	Symbol
CN3-1	Output 2[High voltage] I _{rms} 2 to 6mA	V _{HIGH2}
CN3-2	—	N.C.
CN3-3	Output 2[Low voltage] (2V)	V _{LOW2}

• All specifications are subject to change without notice.

Power Supplies

CXA Series CXA-M1212-RJL

DC to AC Inverters

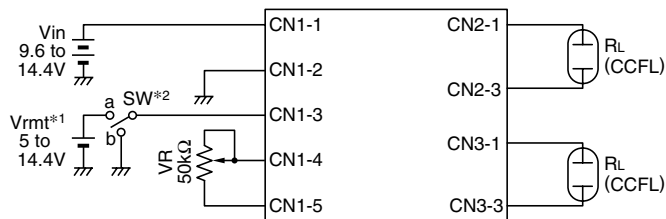
Connector type, Dimming, 5W, For 2 Bulbs

ELECTRICAL CHARACTERISTICS

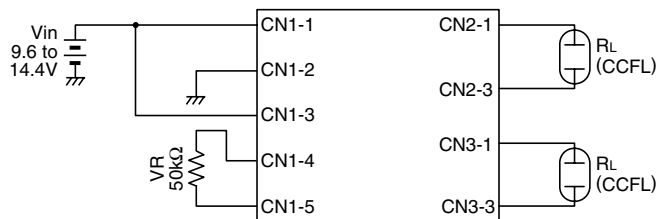
Items	Unit	Symbol	Specifications			Conditions				Brightness
			min.	typ.	max.	Vin(V)	VR(k Ω)	Ta($^{\circ}$ C)	RL(k Ω)	
Output current Irms	mA	lout1	5.3	6	6.7	9.6 to 14.4	50	0 to +60	50 to 70	Maximum
		lout2	5.3	6	6.7	9.6 to 14.4	50	0 to +60	50 to 70	Maximum
		lout1	5.5	6	6.5	12	50	23 \pm 5	60	Maximum
		lout2	5.5	6	6.5	12	50	23 \pm 5	60	Maximum
		lout1	1.7	2	2.3	12	0	23 \pm 5	180	Minimum
		lout2	1.7	2	2.3	12	0	23 \pm 5	180	Minimum
Input current Idc	A	lin	—	0.47	0.75	9.6 to 14.4	0 to 50	0 to +60	50 to 70	
Oscillation frequency	kHz	FL	33	39	45	9.6 to 14.4	50	0 to +60	50 to 70	
Open circuit output voltage Erms	V	Vopen	1400	1500	—	9.6 to 14.4	0 to 50	0 to +60	∞	

TYPICAL CONNECTIONS

EXAMPLE OF POTENTIOMETER DIMMER CONTROL



NO DIMMER CONTROL



*1 Vrm1 (remote voltage) shall be ON after Vin was ON.

*2 SW a: on, b:off

BRIGHTNESS DIMMER RESISTANCE-OUTPUT CURRENT CHARACTERISTICS

