



Chipsmall Limited consists of a professional team with an average of over 10 year of expertise in the distribution of electronic components. Based in Hongkong, we have already established firm and mutual-benefit business relationships with customers from,Europe,America and south Asia,supplying obsolete and hard-to-find components to meet their specific needs.

With the principle of “Quality Parts,Customers Priority,Honest Operation,and Considerate Service”,our business mainly focus on the distribution of electronic components. Line cards we deal with include Microchip,ALPS,ROHM,Xilinx,Pulse,ON,Everlight and Freescale. Main products comprise IC,Modules,Potentiometer,IC Socket,Relay,Connector.Our parts cover such applications as commercial,industrial, and automotives areas.

We are looking forward to setting up business relationship with you and hope to provide you with the best service and solution. Let us make a better world for our industry!



Contact us

Tel: +86-755-8981 8866 Fax: +86-755-8427 6832

Email & Skype: info@chipsmall.com Web: www.chipsmall.com

Address: A1208, Overseas Decoration Building, #122 Zhenhua RD., Futian, Shenzhen, China



Connector type, Dimming, 7W, For 2 bulbs

TDK DC-AC Inverter

CXA-P1212-VJL

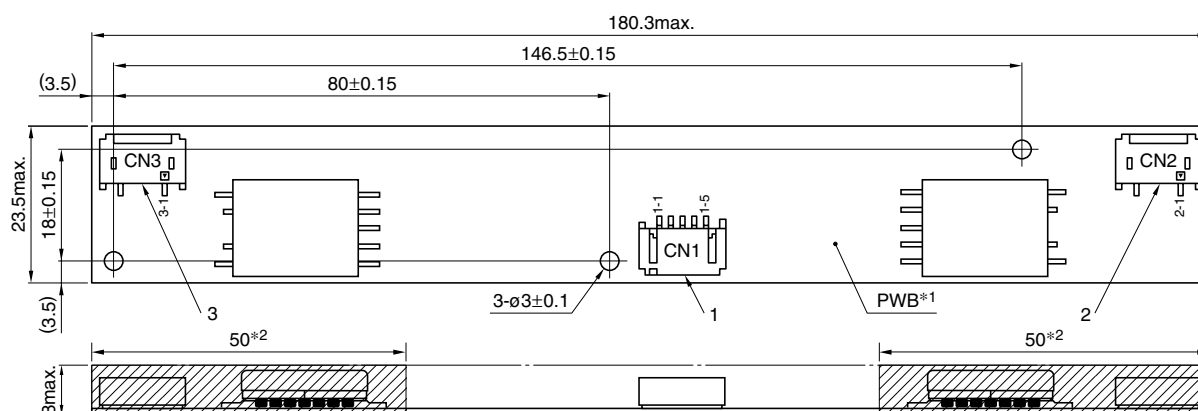
FEATURES

- The CXA-P1212-VJL is an inverter for cold cathode fluorescent lamps and features a built-in dimmer.
- Because they employ advanced output current control, fluctuations in input voltage, load, and distributed capacitance have virtually no effect on brightness.
- Output open and short circuit conditions result in no damage, heat generation, or other difficulties.
- Safe design that includes a built-in overcurrent protection element.
- Insulation is simplified due to flat backside surface of board.
- The high-voltage terminal is coated with silicone so as to reduce a possibility of an occurrence of a defect caused by dust.

TEMPERATURE AND HUMIDITY RANGES

Temperature range (°C)	Operating	0 to +70
	Storage	-30 to +85
Humidity range(%)RH	95max. [Maximum wet-bulb temperature 38°C]	

SHAPES AND DIMENSIONS



*1 Substrate (PWB: Printed wiring board): Noncombustible material UL94V-0 (FR-4 or CEM-3) t=1mm

*2 High-voltage generator (The entire surface within a range of 50mm away from the end of the base in the output)

Weight: 21g typ.

Dimensions in mm

	Connector manufacturer's company and type	Symbol
1 Input connector	Japan Solderless Terminal Co., Ltd. S5B-PH-SM3	CN1
2 Output connector	Japan Solderless Terminal Co., Ltd. SM02(8.0)B-BHS-1	CN2
3 Output connector	Japan Solderless Terminal Co., Ltd. SM02(8.0)B-BHS-1	CN3

TERMINAL NUMBERS AND FUNCTIONS

CN1

Terminal No.	Functions	Symbol
CN1-1	Input voltage Edc: 9.6 to 14.4V 12V[nom.]	Vin
CN1-2	0V	GND
CN1-3	Brightness dimmer voltage Edc: 0 to 3.4V (Maximum brightness on 0V)	Vbr
CN1-4	Used in the internal circuits, do not connect.	N.C.
CN1-5	Remote voltage Edc 0V: off/5 to 7V:on	Vrmt

CN2

Terminal No.	Functions	Symbol
CN2-1	Output 1[High voltage] Irms 2 to 6mA	V _{HIGH1}
CN2-2	—	N.C.
CN2-3	Output 1[Low voltage] (2V)	V _{LOW1}

CN3

Terminal No.	Functions	Symbol
CN3-1	Output 2[High voltage] Irms 2 to 6mA	V _{HIGH2}
CN3-2	—	N.C.
CN3-3	Output 2[Low voltage] (2V)	V _{LOW2}

All specifications are subject to change without notice.

Connector type, Dimming, 7W, For 2 bulbs

TDK DC-AC Inverter

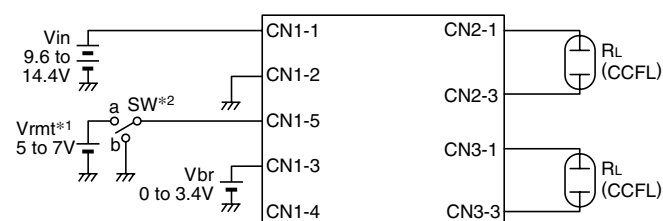
CXA-P1212-VJL

ELECTRICAL CHARACTERISTICS

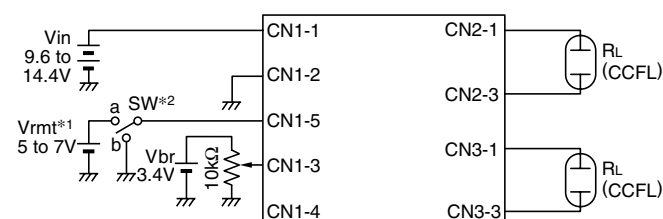
Items	Unit	Symbol	Specifications			Conditions				Brightness
			min.	typ.	max.	Vin(V)	Vbright(V)	Ta(°C)	RL(kΩ)	
Output current Irms	mA	lout1	5.3	6	6.7	12±2.4	0	0 to +70	76 to 114	Maximum
		lout2	5.3	6	6.7	12±2.4	0	0 to +70	76 to 114	Maximum
		lout1	5.5	6	6.5	12±1.2	0	0 to +70	95	Maximum
		lout2	5.5	6	6.5	12±1.2	0	0 to +70	95	Maximum
		lout1	1.7	2	2.4	12±1.2	3.4	0 to +70	250	Minimum
		lout2	1.7	2	2.4	12±1.2	3.4	0 to +70	250	Minimum
Input current Idc	A	Iin	—	0.76	1.3	12±2.4	0 to 3.4	0 to +70	76 to 114	
Oscillation frequency	kHz	FL	52	58	64	12±2.4	0	0 to +70	95	
Open circuit output voltage Erms	V	Vopen	1400	1500	2000	12±2.4	0 to 3.4	0 to +70	∞	

TYPICAL CONNECTIONS

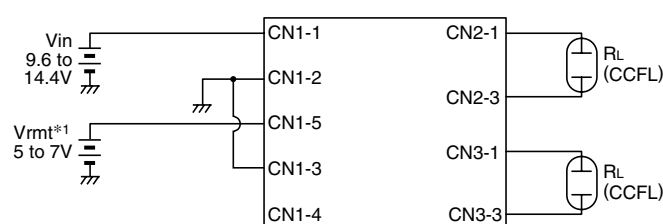
EXAMPLE OF VOLTAGE DIMMER CONTROL



EXAMPLE OF POTENTIOMETER DIMMER CONTROL



NO DIMMER CONTROL



*1 Vrm1 (remote voltage) shall be ON after Vin was ON.

*2 SW a: on, b:off

BRIGHTNESS DIMMER VOLTAGE - OUTPUT CURRENT CHARACTERISTICS

