



Chipsmall Limited consists of a professional team with an average of over 10 year of expertise in the distribution of electronic components. Based in Hongkong, we have already established firm and mutual-benefit business relationships with customers from,Europe,America and south Asia,supplying obsolete and hard-to-find components to meet their specific needs.

With the principle of “Quality Parts,Customers Priority,Honest Operation,and Considerate Service”,our business mainly focus on the distribution of electronic components. Line cards we deal with include Microchip,ALPS,ROHM,Xilinx,Pulse,ON,Everlight and Freescale. Main products comprise IC,Modules,Potentiometer,IC Socket,Relay,Connector.Our parts cover such applications as commercial,industrial, and automotives areas.

We are looking forward to setting up business relationship with you and hope to provide you with the best service and solution. Let us make a better world for our industry!



Contact us

Tel: +86-755-8981 8866 Fax: +86-755-8427 6832

Email & Skype: info@chipsmall.com Web: www.chipsmall.com

Address: A1208, Overseas Decoration Building, #122 Zhenhua RD., Futian, Shenzhen, China





CY3209-ExpressEVK Quick Start Guide

Spec. # 001-22859 Rev. **

Cypress Semiconductor
198 Champion Court
San Jose, CA 95134-1709
Phone (USA): 800.858.1810
Phone (Intl): 408.943.2600
<http://www.cypress.com>

Copyrights

© Cypress Semiconductor Corporation, 2007. The information contained herein is subject to change without notice. Cypress Semiconductor Corporation assumes no responsibility for the use of any circuitry other than circuitry embodied in a Cypress product. Nor does it convey or imply any license under patent or other rights. Cypress products are not warranted nor intended to be used for medical, life support, life saving, critical control or safety applications, unless pursuant to an express written agreement with Cypress. Furthermore, Cypress does not authorize its products for use as critical components in life-support systems where a malfunction or failure may reasonably be expected to result in significant injury to the user. The inclusion of Cypress products in life-support systems application implies that the manufacturer assumes all risk of such use and in doing so indemnifies Cypress against all charges.

Any Source Code (software and/or firmware) is owned by Cypress Semiconductor Corporation (Cypress) and is protected by and subject to worldwide patent protection (United States and foreign), United States copyright laws and international treaty provisions. Cypress hereby grants to licensee a personal, non-exclusive, non-transferable license to copy, use, modify, create derivative works of, and compile the Cypress Source Code and derivative works for the sole purpose of creating custom software and or firmware in support of licensee product to be used only in conjunction with a Cypress integrated circuit as specified in the applicable agreement. Any reproduction, modification, translation, compilation, or representation of this Source Code except as specified above is prohibited without the express written permission of Cypress.

Disclaimer: CYPRESS MAKES NO WARRANTY OF ANY KIND, EXPRESS OR IMPLIED, WITH REGARD TO THIS MATERIAL, INCLUDING, BUT NOT LIMITED TO, THE IMPLIED WARRANTIES OF MERCHANTABILITY AND FITNESS FOR A PARTICULAR PURPOSE. Cypress reserves the right to make changes without further notice to the materials described herein. Cypress does not assume any liability arising out of the application or use of any product or circuit described herein. Cypress does not authorize its products for use as critical components in life-support systems where a malfunction or failure may reasonably be expected to result in significant injury to the user. The inclusion of Cypress' product in a life-support systems application implies that the manufacturer assumes all risk of such use and in doing so indemnifies Cypress against all charges.

Use may be limited by and subject to the applicable Cypress software license agreement.

PSoC Designer™, Programmable System-on-Chip™, and PSoC Express™ are trademarks and PSoC® is a registered trademark of Cypress Semiconductor Corp. All other trademarks or registered trademarks referenced herein are property of the respective corporations.

Flash Code Protection

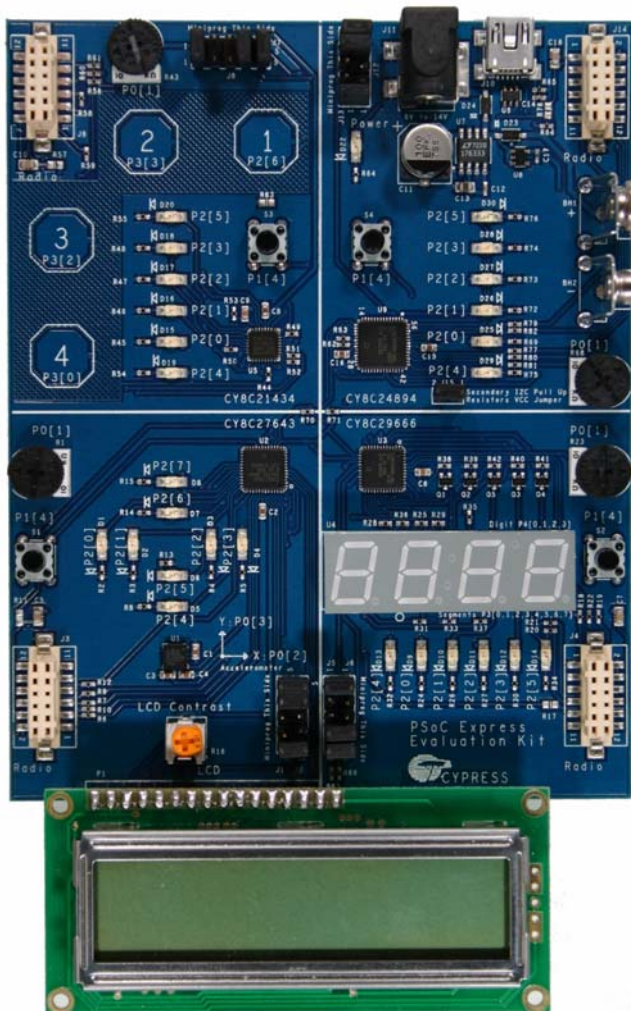
Cypress products meet the specifications contained in their particular Cypress PSoC Data Sheets. Cypress believes that its family of PSoC products is one of the most secure families of its kind on the market today, regardless of how they are used. There may be methods, unknown to Cypress, that can breach the code protection features. Any of these methods, to our knowledge, would be dishonest and possibly illegal. Neither Cypress nor any other semiconductor manufacturer can guarantee the security of their code. Code protection does not mean that we are guaranteeing the product as "unbreakable."

Cypress is willing to work with the customer who is concerned about the integrity of their code. Code protection is constantly evolving. We at Cypress are committed to continuously improving the code protection features of our products.

1. Getting Started



Getting Started



Kit Contents

- Express Evaluation Board
- 5V LCD Module

Not Pictured

- MiniProg Programming Unit
- USB Cable
- 2 Artaflex AWP24S 2.4 GHz Radios
- 9V Battery
- CY3209-ExpressEVK Kit CD

Install PSoC Development Software

1. Insert the PSoC Development Software Suite CD into your CD-ROM drive and install PSoC Express.
2. For all the latest service packs and information, visit www.cypress.com/psoc.



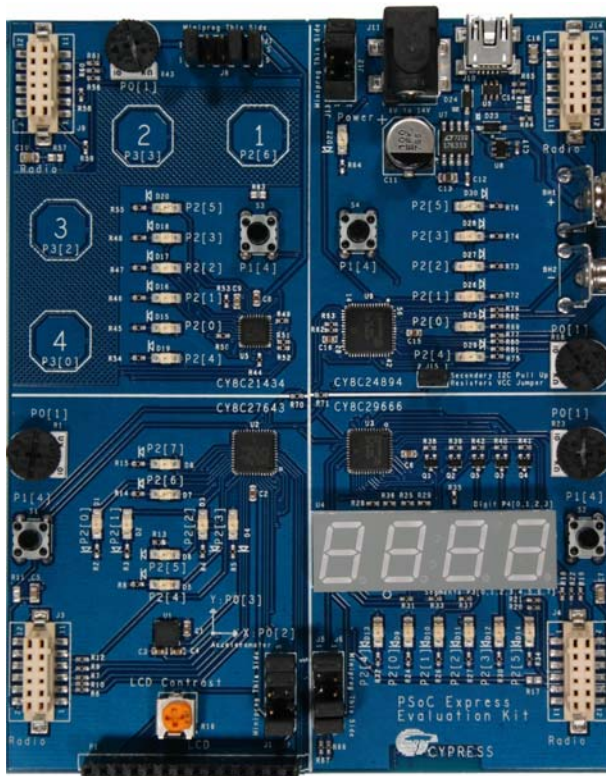
2. Explore Your Express Evaluation Board



CY3209-ExpressEVK Board

TL = Top Left

TR = Top Right



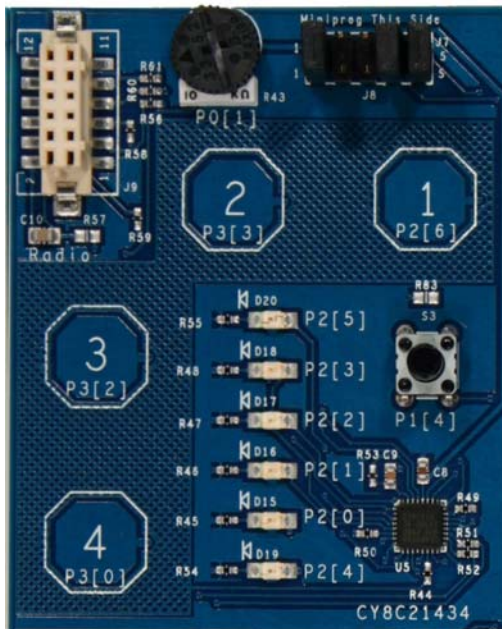
BL = Bottom Left

BR = Bottom Right

- Jumpers connect P1[0] and P1[1] of individual PSoC devices (P1[1] on pin 4 and P1[0] on pin 5 of J1, J6, J7, and J13) to a common I2C bus (clock on pin 4 and data on pin 5 of J2, J5, J8, and J12).
- Jumpers connect the PSoC devices (pin 1 of J1, J6, J7, and J13) to a common power bus (pin 1 of J2, J5, J8, and J12).
- Remove jumpers before programming PSoC devices with the MiniProg.

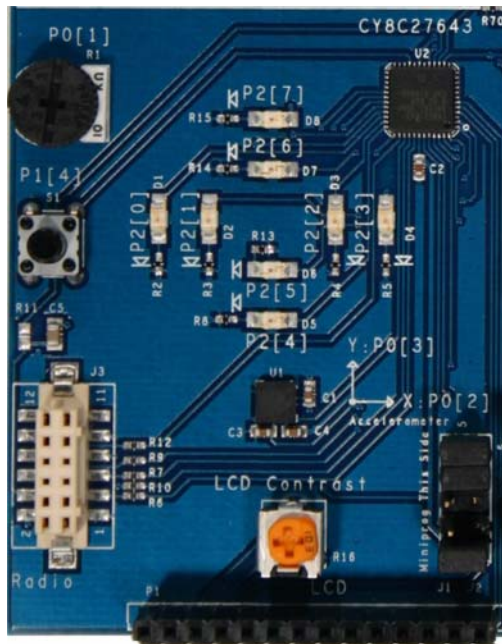
Schematics can be found on the Express Evaluation Kit CD in the folder /Documentation.

Top Left (TL) Quadrant



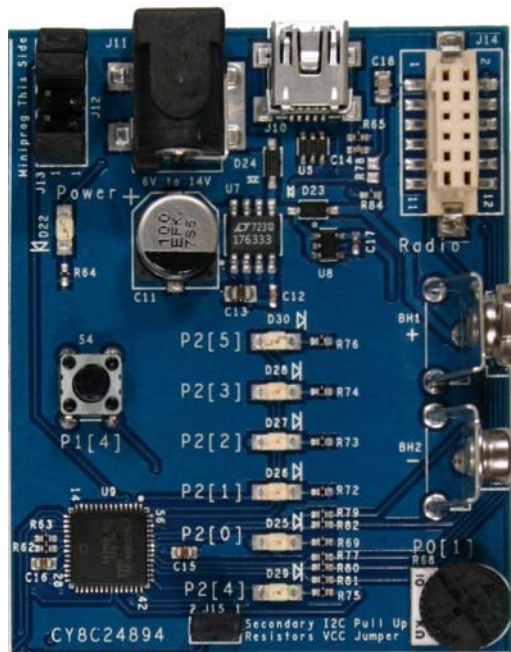
- CY8C21434-24LFX PSoC Device (U5)
- Four CapSense Buttons (octagons labeled 1 through 4)
- Potentiometer (R43)
- Four Green LEDs (D15 through D18)
- Two Red LEDs (D19 and D20)
- Pushbutton (Normally Open, Int. Pull Down, S3)
- Socket for Radio (J9)
- Programming Header (J7)

Bottom Left (BL) Quadrant



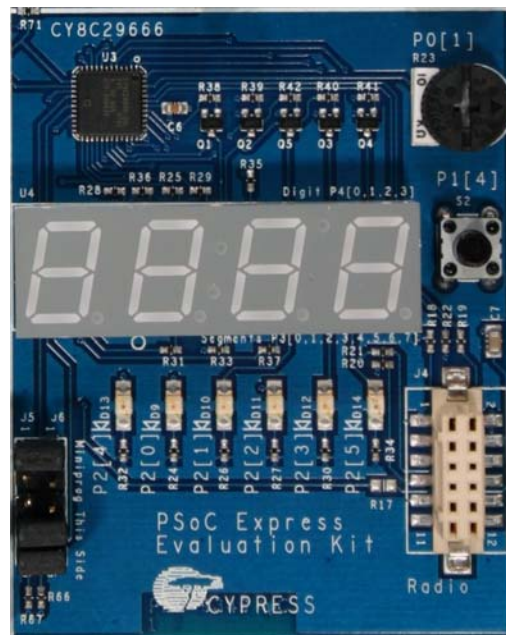
- CY8C27643-24LFXI PSoC Device (U2)
- ADI ADXL322 Dual-Axis Accelerometer (U1)
- Potentiometer (R1)
- Four Green LEDs (D1 through D4)
- Four Red LEDs (D5 through D8)
- Pushbutton (Normally Open, Int. Pull Down, S1)
- Socket for LP Radio (J3)
- Programming Header (J1)
- Receptacle for LCD (P1)

Top Right (TR) Quadrant



- CY8C24894-24LFXI PSoC Device (U9)
- USB Mini B Connector (J10)
- Potentiometer (R68)
- Four Green LEDs (D25 through D28)
- Two Red LEDs (D29 and D30)
- Pushbutton (Normally Open, Int. Pull Down, S4)
- Socket for Radio (J14)
- 6-14V Power Input Jack (J11)
- 9V Battery Clip (BH1 and BH2)
- Programming Header (J13)

Bottom Right (BR) Quadrant



- CY8C29666-24LFXI PSoC Device (U3)
- 4-Digit 7-Segment LED Display (Common Cathode, U4)
- Potentiometer (R23)
- Four Green LEDs (D9 through D12)
- Two Red LEDs (D13 and D14)
- Pushbutton (Normally Open, Int. Pull Down, S2)
- Socket for Radio (J4)
- Programming Header (J6)



3. CY3209-ExpressEVK Example Projects



PSoC Express

Chapter 1: Introduction

1. Open the CY3209-ExpressEVK Kit Guide on the CD's /Documentation folder.
2. Read Chapter 1 of the Kit Guide to learn the following subjects:
 - a. How to add drivers and valuator to a PSoC Express Design.
 - b. How to install your MiniProg programmer.
 - c. How to program the demonstration board.
 - d. Conventions used in the CY3209-ExpressEVK Kit Guide.

Explore the Hands-on Example Projects

Select other projects to build from the following chapters in the Kit Guide

Chapter 2: First Example

This example implements a pushbutton used to control a decaying LED.

Chapter 3: I2C Master/Slave Lab

This lab creates two projects: an I2C slave and an I2C master. The I2C master device reads a voltage value from the slave and displays the value on a four digit LED display. The master also writes a control value to the slave device to set an LED to Off, On, or Blinking, depending on the voltage level read from the slave.

Chapter 4: USB-UART Lab

This project uses the USB-UART driver to demonstrate the ability to monitor and control a PSoC device with a PC using a virtual COM port on a USB hardware connection. The project has a voltage input and an LED that supports three states: Off, On, and Blinking. The LED state is controlled by an Interface Valuator.

Chapter 5: CapSense Lab

This project creates four capacitance sensing buttons that individually control four LEDs.

Chapter 6: LCD Lab

This project displays a voltage input as a numeric value and as a bar graph on an LCD display.

Chapter 7: Cypress WirelessUSB™ Master/Slave Lab 1

This lab creates two projects: a WirelessUSB slave and a WirelessUSB master. The WirelessUSB master device reads a voltage value from the slave and displays the value on a four digit LED display. The master also writes a control value to the slave device to set an LED to Off, On, or Blinking depending on the voltage level read from the slave.

Chapter 8: Cypress WirelessUSB™ Master/Slave Lab 2

This lab implements a wireless tilt sensor. The lab creates two projects: a WirelessUSB slave and a WirelessUSB master. The slave device transmits information from a dual axis accelerometer to the master device. The master device uses this information to display the XY tilt on the 8 LEDs in the bottom left quadrant of the master demonstration board. The LED pattern is also transmitted back to the slave device for display on the slave demonstration board.

Note: This lab requires two CY3209-ExpressEVK kits.

4. Design Support and Resources



PSoC Development Software Online

All PSoC development software tools are available for download online. For PSoC Express, visit www.cypress.com/psocexpress. For PSoC Designer visit www.cypress.com/psocdesigner. For PSoC Programmer visit www.cypress.com/psocprogrammer.

PSoC Data Sheets and Application Notes

For all PSoC device data sheets and detailed application notes, many with complete starter projects, visit www.cypress.com/designresources. In the Products column, select “PSoC Mixed-Signal Controllers” and in the Resource Type column, select either “Application Notes” or “Datasheets.”

PSoC Device Selector Guide

In the PSoC Application Notes section, search for [AN2209](#), The Device Selection Guide for PSoC. It is a useful tool for determining exactly which PSoC device you should use for a specific design project.

PSoC Development Tools Selector Guide

In the PSoC Application Notes section, search for [AN2402](#), The PSoC Development Tools Selector Guide. This is a complete catalog and description of all the development tools that support PSoC devices and when to use them in your design cycle—from concept to production.

PSoC On-Demand Training

Visit www.cypress.com/psoctraining to engage in on-demand self-paced PSoC product and development software training. Learn to design PSoC like the pros, at the introductory, intermediate, and advanced knowledge levels!

PSoC On-Site Training

Email training@cypress.com to enquire about PSoC in-person training seminars at a location near you. Learn design basics, tips, and tricks from the pros to become a PSoC design expert!

Online Technical Support

For knowledge base articles, customer forums, and online application support, visit www.cypress.com/support.

Additional CapSense Resources

A wealth of information about PSoC Express and CapSense is available on the Cypress.com web site, and more is frequently added. The following list is just a sample of what is available.

CapSense DataSheets

- [CY8C20434 Mixed Signal Array](#)
- [CY8C20334 Mixed Signal Array](#)
- [CY8C20234 Mixed Signal Array](#)

CapSense Application Notes

- [AN2292, Layout Guidelines for PSoC™ CapSense](#)
- [AN2318, EMC Design Considerations for PSoC CapSense Applications](#)
- [AN2355, Calibrating CapSense with the CSR User Module](#)
- [AN2360, Power and Sleep Considerations](#)
- [AN2393, Migrating from CSR to CSA](#)
- [AN2394, CapSense Best Practices](#)
- [AN2397, CapSense Data Viewing Tool](#)
- [AN2398, Waterproof Capacitive Sensing](#)
- [AN2403, Signal-to-Noise Ratio Requirement for CapSense Applications](#)
- [AN2408, Migrating from CSR to CSD](#)
- [AN14459, CapSense Device and Method Selection Guide](#)

CapSense Technical Articles

- [TA1186, Designer's Guide to Rapid Prototyping of Capacitive Sensors on any Surface](#)
- [TA1179, Controls & Sensors Touch Sensors Spread Out](#)
- [TA1193, The Art of Capacitive Touch Sensing](#)
- [WP0004, White Paper: Cypress's CapSense Successive Approximation Algorithm](#)

CapSense Developer Kits

- [DK10068, CapSense Successive Approximation \(CSA\)](#)
- [DK10069, CapSense Sigma-Delta \(CSD\)](#)
- [DK10064, CapSense Proximity Detection Demonstration](#)
- [DK10059, CapSense Demo Board](#)