



Chipsmall Limited consists of a professional team with an average of over 10 year of expertise in the distribution of electronic components. Based in Hongkong, we have already established firm and mutual-benefit business relationships with customers from,Europe,America and south Asia,supplying obsolete and hard-to-find components to meet their specific needs.

With the principle of “Quality Parts,Customers Priority,Honest Operation,and Considerate Service”,our business mainly focus on the distribution of electronic components. Line cards we deal with include Microchip,ALPS,ROHM,Xilinx,Pulse,ON,Everlight and Freescale. Main products comprise IC,Modules,Potentiometer,IC Socket,Relay,Connector.Our parts cover such applications as commercial,industrial, and automotives areas.

We are looking forward to setting up business relationship with you and hope to provide you with the best service and solution. Let us make a better world for our industry!



Contact us

Tel: +86-755-8981 8866 Fax: +86-755-8427 6832

Email & Skype: info@chipsmall.com Web: www.chipsmall.com

Address: A1208, Overseas Decoration Building, #122 Zhenhua RD., Futian, Shenzhen, China





CY3215A-DK

PSoC[®] 1 In-Circuit Emulation (ICE) Lite Development Kit Guide

Doc. # 001-80377 Rev. *A

Cypress Semiconductor
198 Champion Court
San Jose, CA 95134-1709
Phone (USA): 800.858.1810
Phone (Intl): 408.943.2600
<http://www.cypress.com>

Copyrights

© Cypress Semiconductor Corporation, 2012. The information contained herein is subject to change without notice. Cypress Semiconductor Corporation assumes no responsibility for the use of any circuitry other than circuitry embodied in a Cypress product. Nor does it convey or imply any license under patent or other rights. Cypress products are not warranted nor intended to be used for medical, life support, life saving, critical control or safety applications, unless pursuant to an express written agreement with Cypress. Furthermore, Cypress does not authorize its products for use as critical components in life-support systems where a malfunction or failure may reasonably be expected to result in significant injury to the user. The inclusion of Cypress products in life-support systems application implies that the manufacturer assumes all risk of such use and in doing so indemnifies Cypress against all charges.

Any Source Code (software and/or firmware) is owned by Cypress Semiconductor Corporation (Cypress) and is protected by and subject to worldwide patent protection (United States and foreign), United States copyright laws and international treaty provisions. Cypress hereby grants to licensee a personal, non-exclusive, non-transferable license to copy, use, modify, create derivative works of, and compile the Cypress Source Code and derivative works for the sole purpose of creating custom software and or firmware in support of licensee product to be used only in conjunction with a Cypress integrated circuit as specified in the applicable agreement. Any reproduction, modification, translation, compilation, or representation of this Source Code except as specified above is prohibited without the express written permission of Cypress.

Disclaimer: CYPRESS MAKES NO WARRANTY OF ANY KIND, EXPRESS OR IMPLIED, WITH REGARD TO THIS MATERIAL, INCLUDING, BUT NOT LIMITED TO, THE IMPLIED WARRANTIES OF MERCHANTABILITY AND FITNESS FOR A PARTICULAR PURPOSE. Cypress reserves the right to make changes without further notice to the materials described herein. Cypress does not assume any liability arising out of the application or use of any product or circuit described herein. Cypress does not authorize its products for use as critical components in life-support systems where a malfunction or failure may reasonably be expected to result in significant injury to the user. The inclusion of Cypress' product in a life-support systems application implies that the manufacturer assumes all risk of such use and in doing so indemnifies Cypress against all charges.

Use may be limited by and subject to the applicable Cypress software license agreement.

PSoC[®] Designer[™] is a trademark and PSoC[®] is a registered trademark of Cypress Semiconductor Corp. All other trademarks or registered trademarks referenced herein are property of the respective corporations.

Flash Code Protection

Cypress products meet the specifications contained in their particular Cypress PSoC Data Sheets. Cypress believes that its family of PSoC products is one of the most secure families of its kind on the market today, regardless of how they are used. There may be methods, unknown to Cypress, that can breach the code protection features. Any of these methods, to our knowledge, would be dishonest and possibly illegal. Neither Cypress nor any other semiconductor manufacturer can guarantee the security of their code. Code protection does not mean that we are guaranteeing the product as 'unbreakable'.

Cypress is willing to work with the customer who is concerned about the integrity of their code. Code protection is constantly evolving. We at Cypress are committed to continuously improving the code protection features of our products.

Contents



1. Introduction	5
1.1 Kit Contents	5
1.2 Additional Learning Resources	7
1.3 Document History	7
1.4 Documentation Conventions	7
2. Getting Started	9
2.1 Kit Installation	9
2.2 PSoC Designer	13
2.3 PSoC Programmer	14
3. Using ICE-Cube Connector	15
3.1 Connecting the ICE-Cube	15
3.1.1 Connect using a USB Port	15
3.1.2 Connect using a Backward-Compatibility Adapter	16
3.1.2.1 Program Device	16
3.1.2.2 Debug Device	17
3.1.3 Connect using a Flex Cable	17
3.1.4 Software Installation	20
3.1.5 Debug a Project	21
3.1.5.1 Break Points.....	22
3.1.5.2 CPU and Register Views	22
3.1.5.3 Watch Variables.....	23
3.1.5.4 Trace.....	24
3.1.5.5 Locals.....	24
3.2 PSoC Programmer	25
4. Code Examples	27
4.1 My First Code Example	27
4.1.1 Project Objective	27
4.1.2 Creating My First PSoC 1 Project	27
4.1.3 Verify Output	35

1. Introduction



Thank you for your interest in the CY3215A-DK PSoC 1 In-Circuit Emulation (ICE) Lite Development Kit (DVK) guide. You can use this kit with PSoC Designer™ or PSoC Programmer. The CY3215A-DK provides debugging functionality for PSoC 1 and manages all the emulation communication between the debugger software running on the computer (PSoC Designer) and the target PSoC chip.

PSoC Designer is PSoC 1's GUI-based Integrated Design Environment (IDE), which includes a powerful set of tools for developing code, prototyping, and debugging. The document gives an overview of the hardware configurations that can be used to set up a debugging system for PSoC 1 using this kit. The [Code Examples chapter on page 27](#) demonstrates use of the critical software elements of the debugging system.

The CY3215A-DK kit supports the following PSoC 1 devices:

- CY8C20x34
- CY8C20xx6A
- CY8C21x23
- CY8C21x34
- CY8C22xxx/CY8C21x45
- CY8C23x33
- CY8C24x23A
- CY8C24x94
- CY8C27x43
- CY8C28xxx
- CY8C29x66
- CY8C95xx

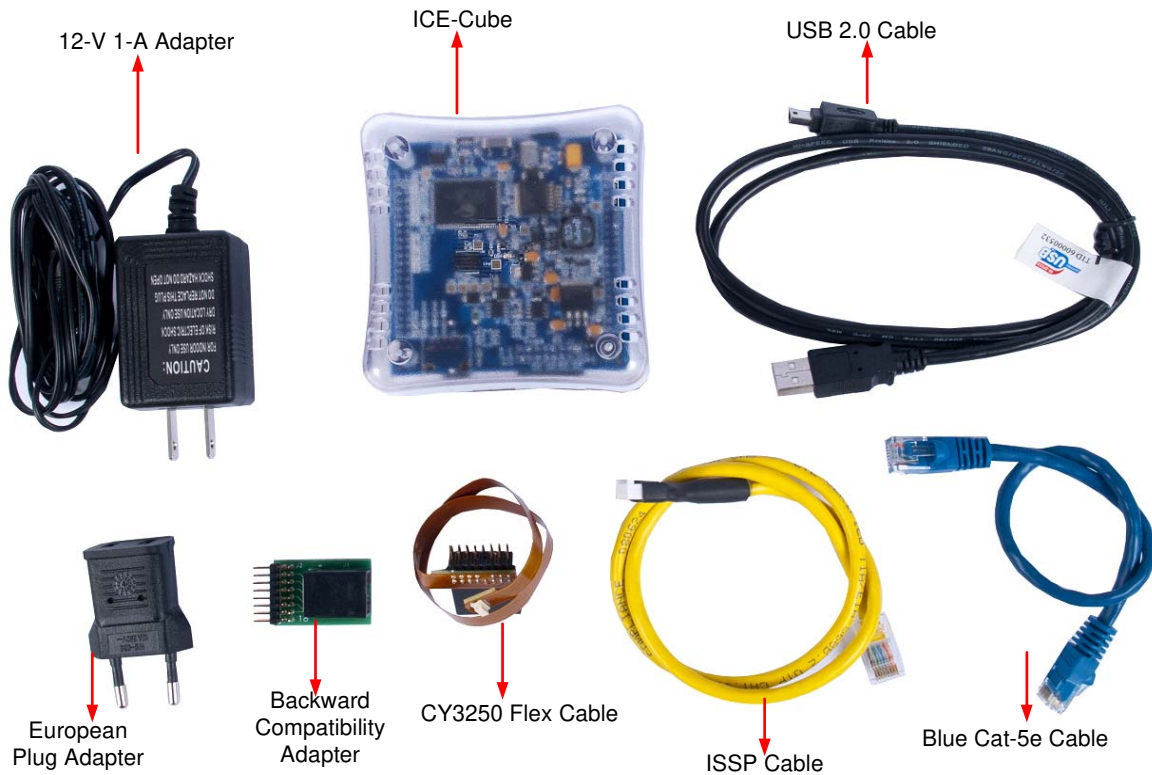
1.1 Kit Contents

The CY3215A-DK kit includes the following:

- ICE-Cube in-circuit emulator
- ISSP cable
- USB 2.0 cable
- Blue Cat-5e cable
- CY3250 flex cable
- Backward-compatibility adapter
- 12-V 1-A adapter
- CY3215A-DK kit CD
 - PSoC Designer installation file

- PSoC Programmer installation file
- Bridge Control Panel installation file (packaged along with PSoC Programmer)
- Kit guide
- Quick start guide
- Release notes

Figure 1-1. CY3215A-DK Kit Contents



Inspect the contents of the kit; if any parts are missing, contact your nearest Cypress sales office for further assistance.

Note The kit ships with only the base ICE debugger unit and its connectors. Pod kits and target boards need to be purchased separately. In-circuit emulation with the ICE is possible with target devices that have the on-chip debugger (OCD) function. Visit <http://www.cypress.com/go/shop> to find the latest list of pods and PSoC1 target boards.

1.2 Additional Learning Resources

Visit <http://www.cypress.com> for additional learning resources in the form of datasheets, technical reference manual, and application notes.

- For more information regarding PSoC Designer functionality and releases:
<http://www.cypress.com/go/psocdesigner>
- For more information regarding PSoC Programmer, supported hardware and COM layer:
<http://www.cypress.com/go/psocprogrammer>
- For a list of PSoC Designer-related trainings:
<http://www.cypress.com/go/psocdesignertraining>
- For more information on CY3250-29xxxQFN ICE Pod Schematic:
<http://www.cypress.com/go/CY3250-29xxxQFN>
- For more information on CY3250-FLEXCABLE Mechanical Layout Drawing:
<http://www.cypress.com/go/CY3250-29xxxQFN>
- For more information on CY3250-29xxxQFN ICE Pod Mechanical Layout Drawing:
<http://www.cypress.com/go/CY3250-29xxxQFN>

1.3 Document History

Table 1-1. Revision History

Revision	PDF Creation Date	Origin of Change	Description of Change
**	06/06/2012	RKPM	Initial version of kit guide
*A	10/22/2012	RKPM	Updated the Introduction chapter and added Figure 1-1. Reorganized chapter 3 and updated image. Added Figure 4-17.

1.4 Documentation Conventions

Table 1-2. Document Conventions for Guides

Convention	Usage
Courier New	Displays file locations, user entered text, and source code: C:\...cd\icc\
<i>Italics</i>	Displays file names and reference documentation: Read about the <i>sourcefile.hex</i> file in the <i>PSoC Designer User Guide</i> .
[Bracketed, Bold]	Displays keyboard commands in procedures: [Enter] or [Ctrl] [C]
File >> Open	Represents menu paths: File >> Open >> New Project
Bold	Displays commands, menu paths, and icon names in procedures: Click the File icon and then click Open .
Times New Roman	Displays an equation: $2 + 2 = 4$
Text in gray boxes	Describes cautions or unique functionality of the product.



2. Getting Started



This chapter describes how to install the CY3215A-DK PSoC 1 In-Circuit Emulation (ICE) Lite Development Kit.

2.1 Kit Installation

To install the CY3215A-DK kit, follow these steps:

1. Insert the kit CD/DVD into the CD/DVD drive of your computer. The CD/DVD is designed to auto-run and the kit installer startup screen appears.

Note You can also download the latest kit installer from <http://www.cypress.com/go/CY3215A-DK>. Three different types of installers are available for download.

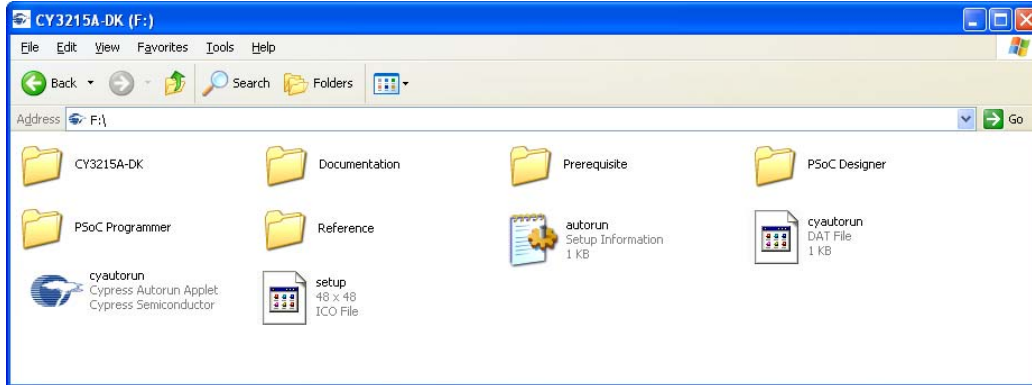
- a. CY3215A-DK_ISO: This file (ISO image) is an archive file of the optical disc provided with the kit. You can use this to create an installer CD/DVD or extract information using WinRar or similar tools.
 - b. CY3215A-DK_Single Package: This executable file installs the contents of the kit CD/DVD, which includes PSoC Programmer, PSoC Designer, and user documents.
 - c. CY3215A-DK_Single Package (without prerequisites): This executable file installs only the kit contents, which includes kit user documents.
2. Click **Install CY3215A-DK** to start the installation, as shown in [Figure 2-1](#).

Figure 2-1. Kit Installer Startup Screen



Note If auto-run does not execute, double-click the *cyautorun.exe* file on the root directory of the CD/DVD, as shown in [Figure 2-2](#). To access the root directory, click **Start > My Computer > CY3215A-DK <drive>**.

Figure 2-2. CD/DVD Root Directory



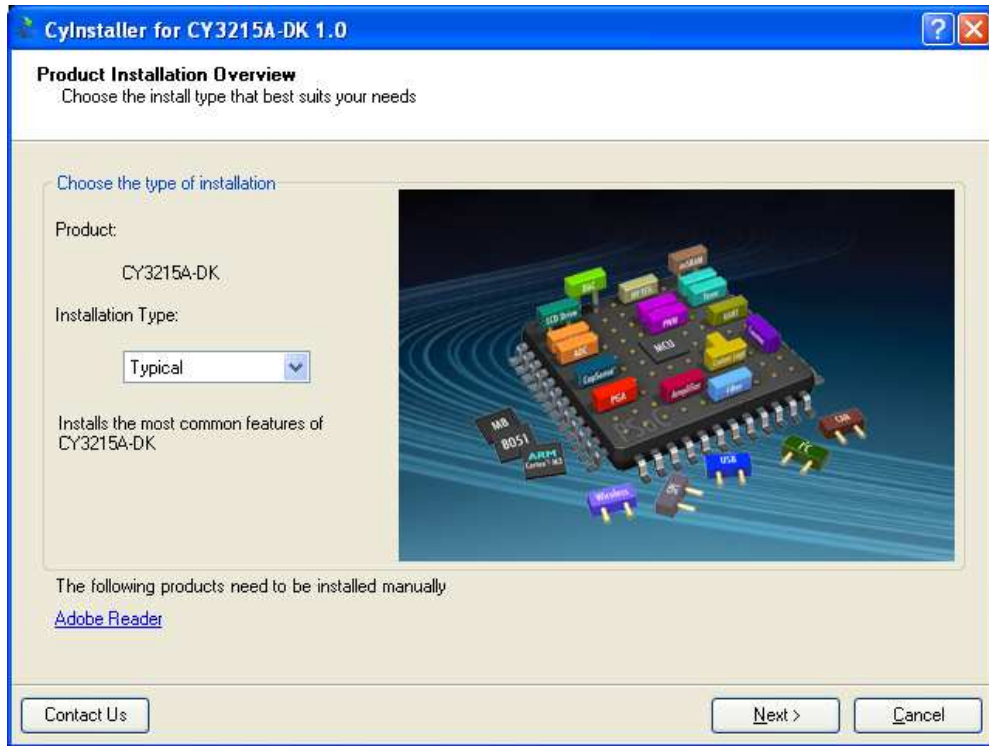
3. In the **InstallShield Wizard**, choose the folder location to install the setup files. You can change the location of the folder for the setup files using **Change**, as shown in [Figure 2-3](#).
4. Click **Next** to launch the kit installer.

Figure 2-3. InstallShield Wizard



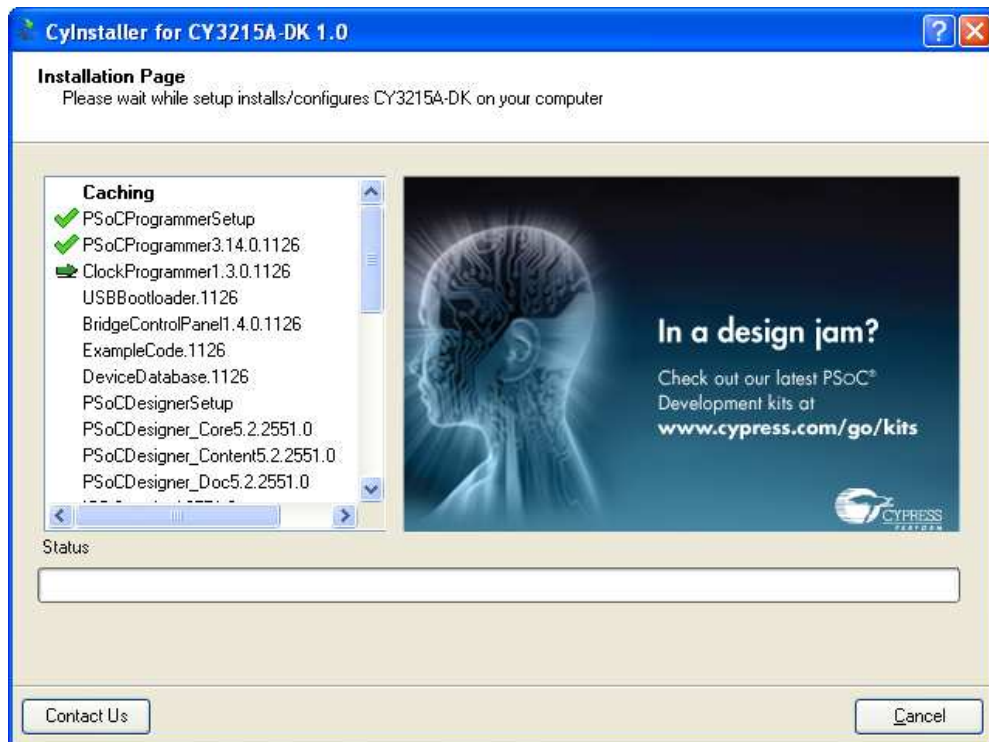
5. On the **Product Installation Overview** screen, select the installation type that best suits your requirement. The drop-down menu has three options: **Typical**, **Complete**, and **Custom**, as shown in [Figure 2-4](#).
6. Click **Next** to start the installation.

Figure 2-4. Installation Type Options



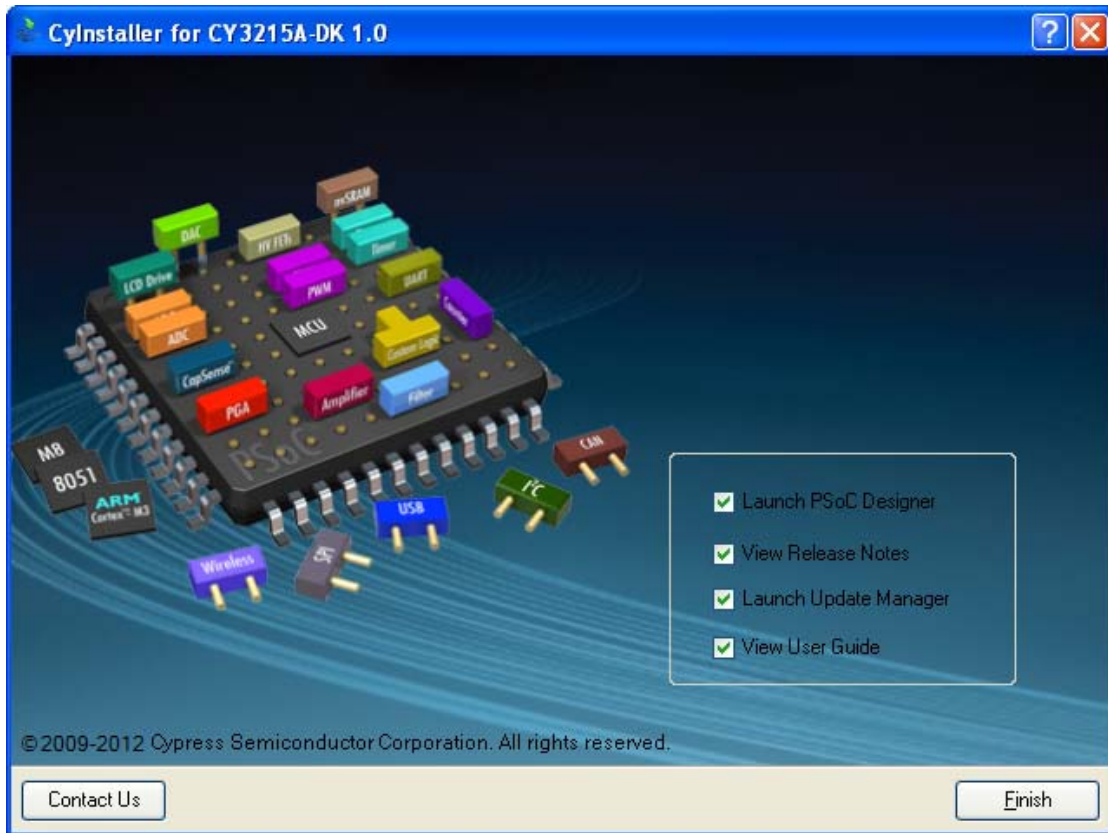
7. When the installation begins, a list of packages appears on the **Installation Page**. A green check mark appears adjacent to every package that is downloaded and installed; see Figure 2-5.

Figure 2-5. Installation Page



8. Wait until all the packages are downloaded and installed successfully.
9. Click **Finish** to complete the kit installation, as shown in [Figure 2-6](#).

Figure 2-6. Installation Complete Page



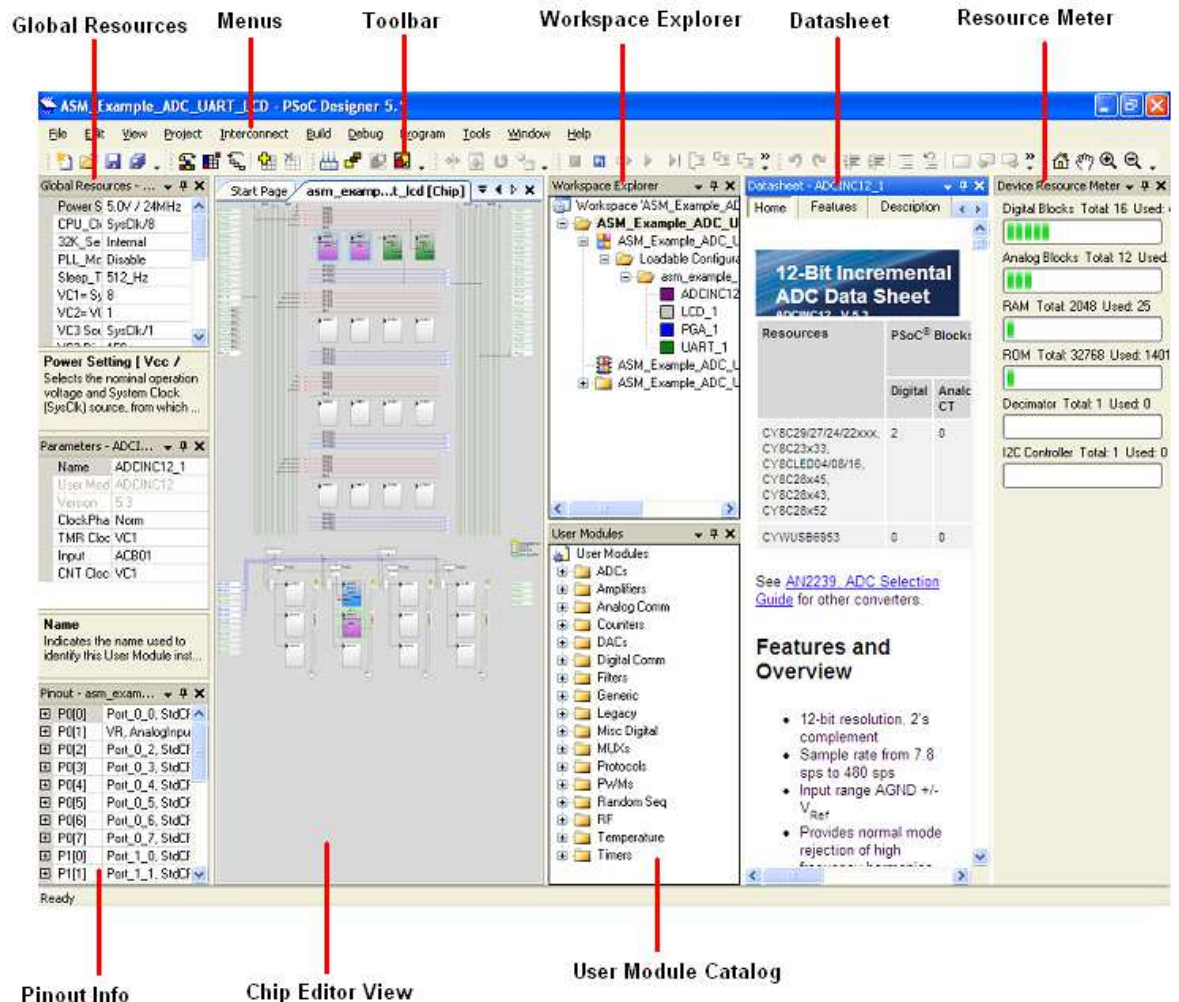
After software installation, verify that you have all hardware and drivers set up for the CY3215A-DK kit by connecting the kit to your computer via its USB interface. Because this is the first time you have connected this board to this computer, initial drivers are installed. If you encounter any prompt related to Windows Logo Testing, click the **Continue Anyway** button to allow the driver installation to finish. Follow the instructions to complete the installation process.

2.2 PSoC Designer

PSoC Designer is the revolutionary integrated design environment (IDE) that helps to customize PSoC 1 to meet specific application requirements.

1. To open PSoC Designer, click **Start > All Programs > Cypress > PSoC Designer <version> > PSoC Designer <version>**.
2. To create a new project in PSoC Designer, click **File > New Project**.
3. To open an existing project in PSoC Designer, click **File > Open**.

Figure 2-7. PSoC Designer Interconnect View



To experiment with the code examples, go to [Code Examples on page 27](#).

Note For more details on PSoC Designer, see the PSoC Designer IDE Guide located at: `<Install_directory>\PSoC Designer\<version>\Documentation`.

See [Additional Learning Resources on page 7](#) for links to PSoC Designer training. The PSoC Designer quick start guide is available at: <http://www.cypress.com/?rID=47954>.

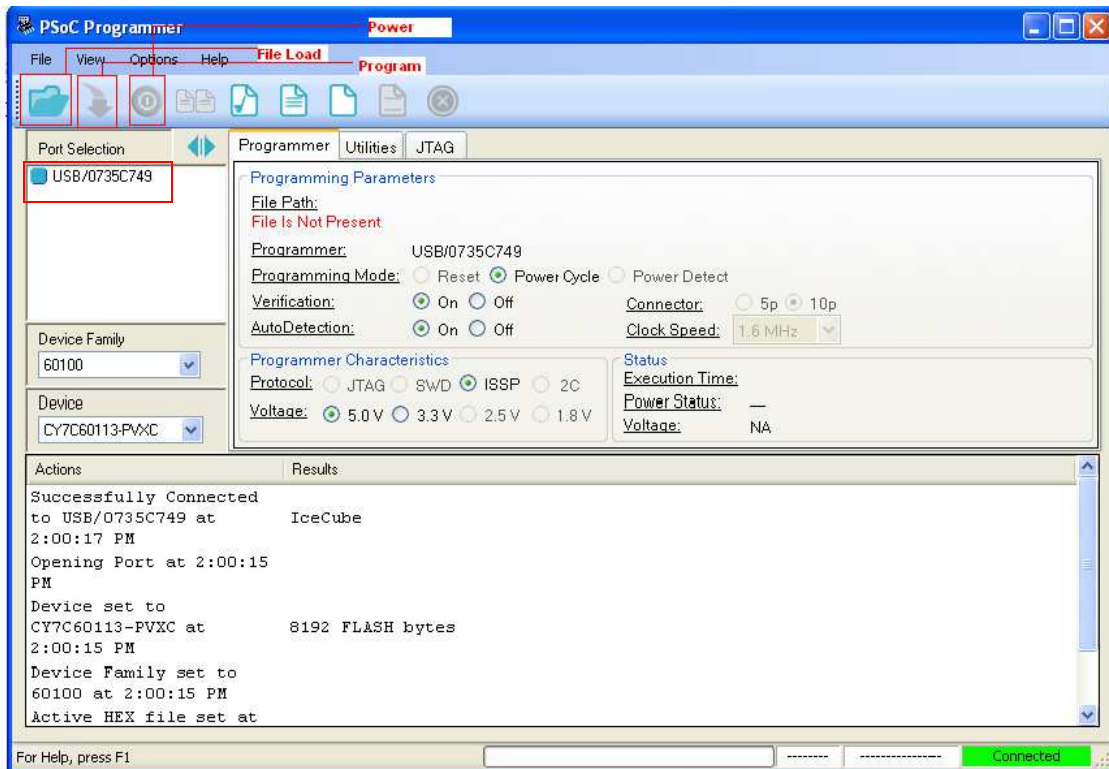
2.3 PSoC Programmer

To open PSoC Programmer, click **Start > All Programs > Cypress > PSoC Programmer <version> > PSoC Programmer <version>**.

To successfully program the device, follow these steps:

1. Select the ICE-Cube connectivity in **Port Selection**, as shown in [Figure 2-8](#).

Figure 2-8. PSoC Programmer Window



2. Click the **File Load** button to load the hex file.
3. Select the device and device family from the list.
4. Click the **Program** button to program the selected PSoC 1 device.
5. Close PSoC Programmer.

Note For more details on PSoC Programmer, see the user guide at the following location:
 <Install_directory>\Cypress\Programmer\<version>\Documents

3. Using ICE-Cube Connector

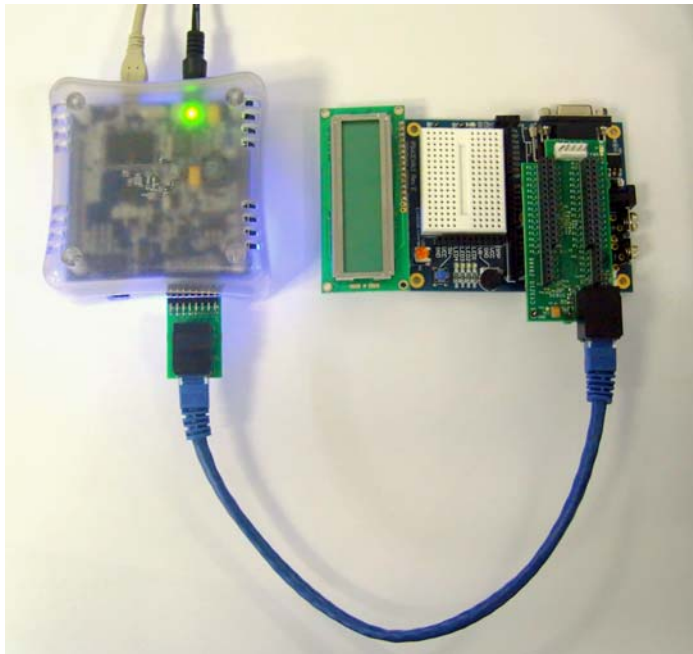


The CY3215A-DK is used to prototype and develop applications with PSoC Designer IDE. This kit supports in-circuit emulation and the software interface allows access to the contents of specific memory locations.

3.1 Connecting the ICE-Cube

The new in-circuit emulator replaces the legacy ICE-4000 and USB adapter to allow seamless USB connection, debugging, and programming. CY3215A-DK is supported by the latest version of PSoC Designer, which is included with the kit.

Figure 3-1. ICE-Cube



3.1.1 Connect using a USB Port

The ICE-Cube connects to any computer using a standard USB 2.0 cable, included in Cypress development kits. To connect the ICE-Cube to your computer, power it first by connecting the wall adapter to the 12-V DC port, plug the USB cable into your computer, and attach the other end to the ICE-Cube.

The ICE-Cube is a plug-and-play device and it should be recognized automatically by any computer with PSoC Designer and PSoC Programmer installed. If USB connection problems occur, refer to Microsoft Windows Help for troubleshooting Windows connectivity issues.

Figure 3-2. USB Port in ICE-Cube



3.1.2 Connect using a Backward-Compatibility Adapter

A backward-compatibility adapter can be used to debug and program PSoC 1 devices.

Figure 3-3. Backward-Compatibility Adapter

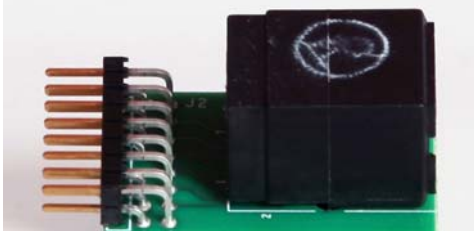


Figure 3-4. Connector in ICE-Cube



3.1.2.1 Program Device

To program the device using the backward-compatibility adapter, follow these steps:

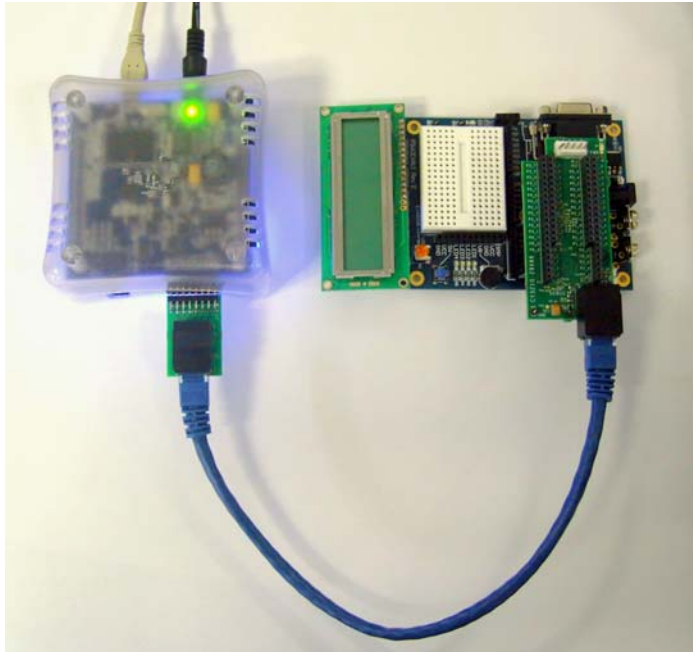
1. Power on the ICE using the 12-V adapter and connect it to your computer using the USB cable.
2. Connect the backward-compatibility adapter to the ICE using the port labelled "POD".
3. Connect the yellow ISSP cable to the ICE-Cube through the backward-compatibility adapter.
4. Place the 5-pin end of the ISSP cable on the 5-pin programming header of the target board.
5. Launch PSoC Programmer.
6. Load the hex file using the **File Load** button.
7. Program it successfully.

3.1.2.2 Debug Device

To debug the device using the backward-compatibility adapter, follow these steps:

1. Power on the ICE using the 12-V adapter and connect it to your computer using the USB cable.
2. Connect the backward-compatibility adapter to the ICE using the port labelled "POD".
3. Connect the blue CAT 5e cable to the ICE-Cube through the backward-compatibility adapter.
4. Connect the other end of the CAT cable to the RJ45 port on the target board.
5. Launch PSoC Designer and create a project for the target device to start a debugging session. The device can also be programmed in this hardware configuration.
6. Launch PSoC Programmer, load a hex file, and click on **Program** to program the device.

Figure 3-5. Backward-Compatibility Adapter Connected to ICE-Cube Pod



3.1.3 Connect using a Flex Cable

A flex cable is used to connect the ICE-Cube to the pod main board.

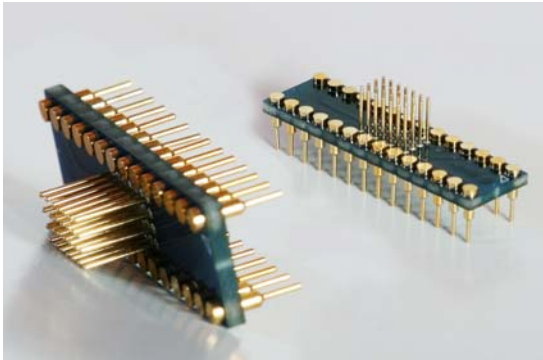
- **Pod:** Pods connect to target circuits via foot. As each pod contains a fully functional PSoC bond-out device, pods may be used instead of devices for test purposes. Simply plug a pod into the circuit without connecting it to an ICE base station. The pod power LED lights up when it is powered and operational.

Figure 3-6. Flex Cable and 29000-28 DIP



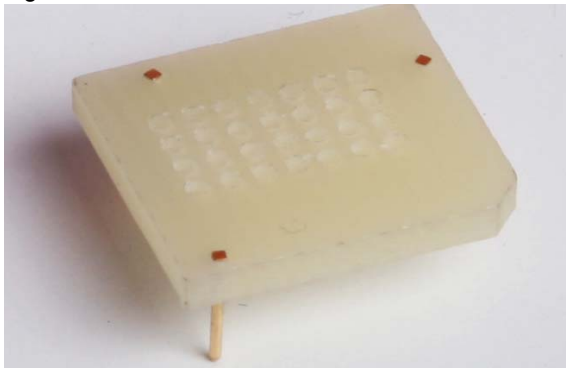
- **Foot:** A foot is used to connect the pod to the MiniEval board. Each foot has a pinout that models a PSoC – for example, a 28-pin DIP. A foot that emulates surface-mount components must be soldered to target circuits. The main board of the pod can then be attached or removed, as desired.

Figure 3-7. 28-Pin DIP Feet



- **Plastic Mask:** The plastic mask is used to orient the foot. Plastic masks are provided to expose only the pins that connect to the foot.

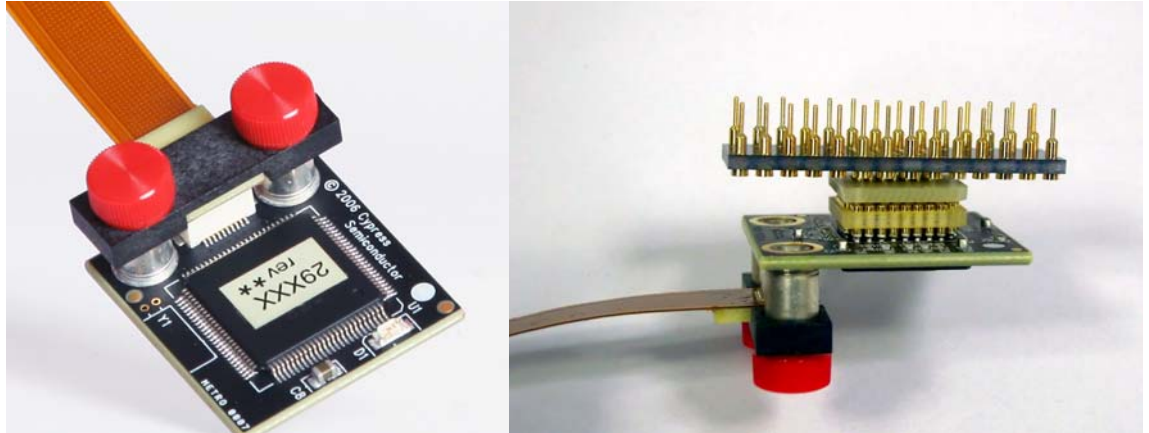
Figure 3-8. Plastic Mask



Before connecting the flex cable to the ICE-Cube, assemble the three pieces (pod, plastic mask, and foot), as shown in [Figure 3-7](#).

1. Select a foot. The foot should match the pinout of the PSoC 1 device used in the target circuit.
2. Next, select the mask that matches the desired foot.
3. Insert the mask into the bottom of the pod, aligning the chamfered corners of the mask to the pin-1 triangle on the pod.
4. Insert the foot through the plastic mask. Use the alignment triangles to orient the foot to the pod.
5. Plug/assemble the pod onto the target board using the relevant feet.

Figure 3-9. Assembled Pod with Flex Cable



6. Connect the other end of the flex cable to the ICE-Cube pod connector, as shown in [Figure 3-7](#).
7. Start debugging the project, as explained in [Debug a Project on page 21](#).

Figure 3-10. Flex Pod Connected to ICE-Cube Pod



Table 3-1. Pin Description of Pod Connector

Pin No.	Pin Name	Pin Description
1	POD EXTRA3	Future use
2	GND	Ground
3	—	—
4	POD_OCDDE	POD_OCD even data I/O
5	GND	Ground
6	POD_OCDD)	POD_OCD odd data output
7	POD EXTRA1	Future use

Table 3-1. Pin Description of Pod Connector

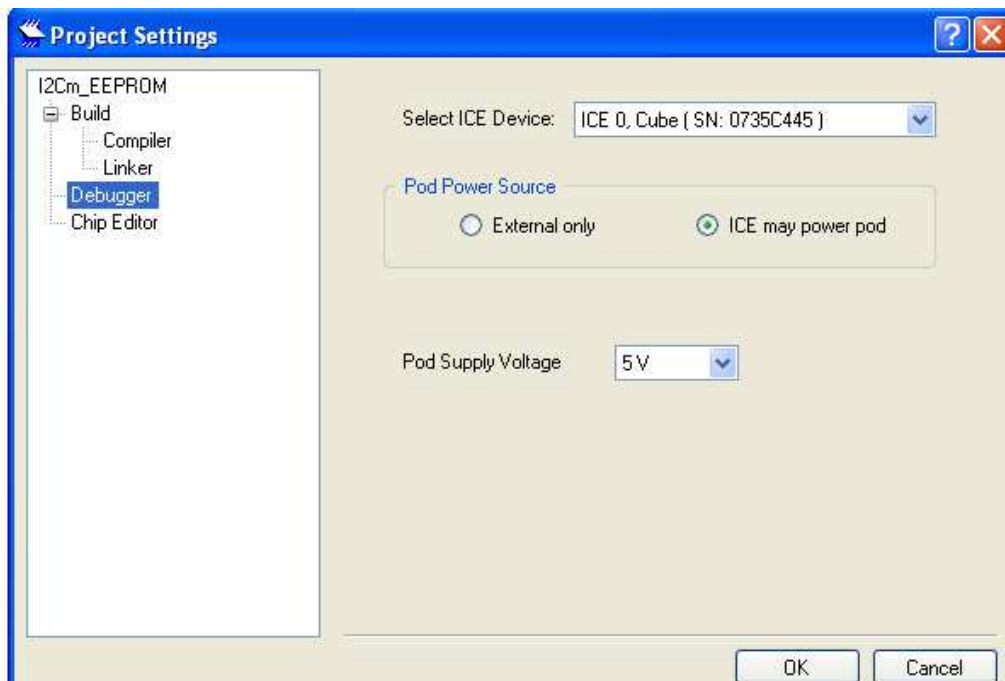
Pin No.	Pin Name	Pin Description
8	POD_XRES	Reset signal (required only for Reset programming mode)
9	GND	Ground
10	POD_OCDHC	POD_OCD high speed clock output
11	GND	Ground
12	POD_OCDCC	POD_OCD CPU clock output
13	POD EXTRA4	Future use
14	PODVCC	Supply voltage
15	–	–
16	PODVCC	Supply voltage

3.1.4 Software Installation

After the physical connection is made, you are ready to configure the internal connection from the computer to the ICE. The ICE enables communication and debugging between PSoC Designer and the pod. To connect the ICE from within PSoC Designer, perform the following steps:

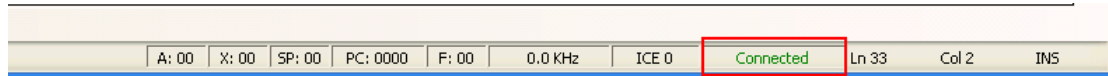
1. Confirm that the flex cable and pod are attached to the ICE-Cube.
2. Confirm that the ICE is powered from the power adapter.
3. Confirm that the USB cable is connected from the ICE-Cube to the computer.
4. Create a project using PSoC Designer. For more information, see [My First Code Example on page 27](#).
5. To access the debugger subsystem, go to **Project > Settings > Debugger**.
6. Select the correct port from the drop-down window. The target board may either be powered by ICE-Cube or an external source. Select **5 V** as **Pod Supply Voltage** to power the board using the ICE-Cube.
7. Click **OK**.

Figure 3-11. Debugger Project Setting



- Click **Debug > Connect/Disconnect [F9]**. On successful connection, you will receive a notification in the Output tab of the Status window; a green indicator displays **Connected** in the lower-right corner of the program.

Figure 3-12. PSoC Designer Connected with ICE-Cube

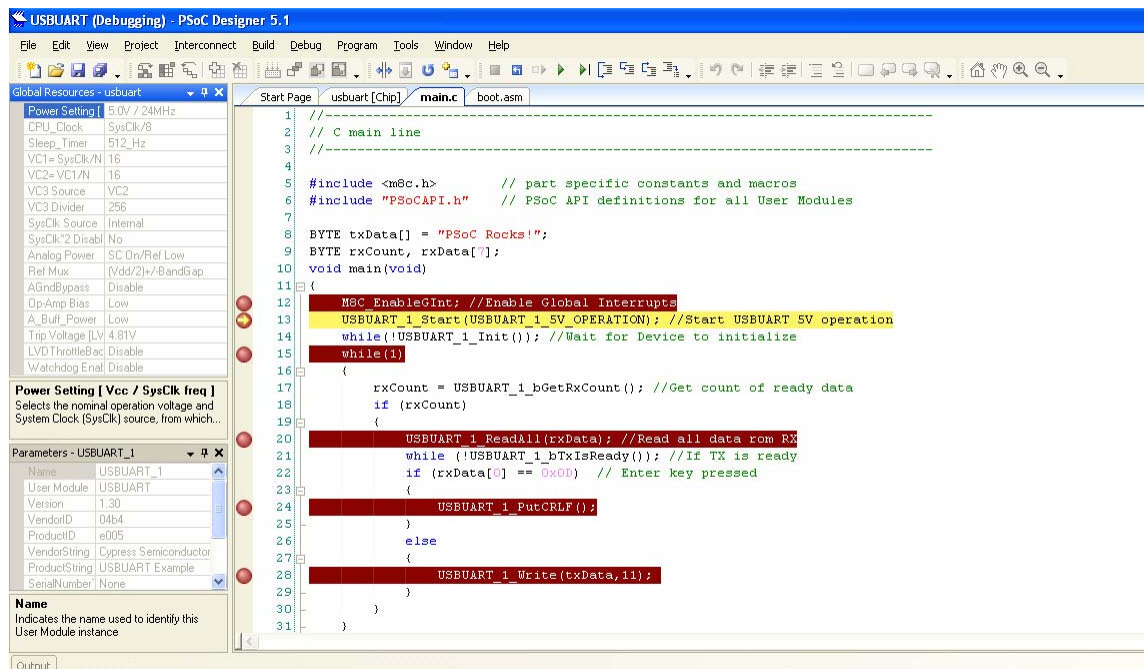


3.1.5 Debug a Project

The following section gives a brief overview of the debugging features in PSoC Designer. For more details, see [Code Examples chapter on page 27](#). To successfully debug a project, follow these steps:

- Connect the ICE-Cube to the PSoC 1 development board.
- Click **Start > All Programs > Cypress > PSoC Designer <version> > PSoC Designer <version>**.
- Create a new project in PSoC Designer by clicking **File > New Project**.
Note To open an existing project, click **File > Open**.
- To connect the ICE-Cube and PSoC 1 development board, go to **PSoC Designer > Debug**.
- Click on **Connect/Disconnect** or press **F9**.
- Right-click on a line in the project from where the debugging process should start. The **Insert/Delete Break Point** option appears.

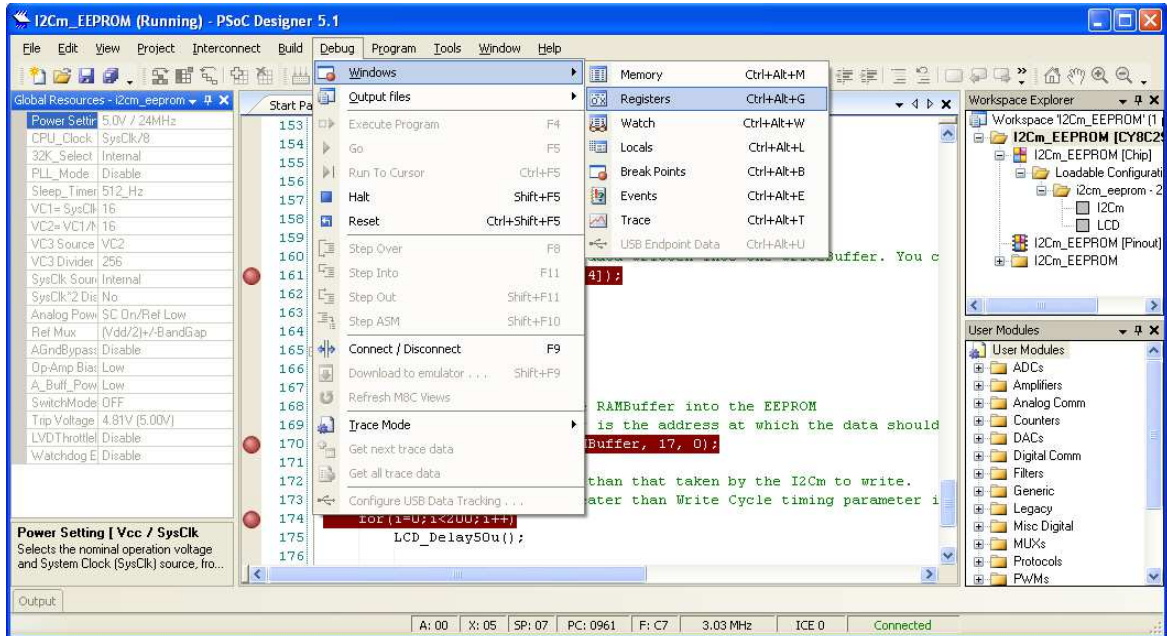
Figure 3-13. Break Points in main.c



- To view memory, registers, and watch variables at a particular location, go to **Debug > Windows**.
- To start the debugging process, go to **Debug > Go** or press **F5**.
Use one of the following options for the debugging process:
 - Debug > Step Over** (or press **F8**): Steps over next statement

- b. **Debug > Step Into** (or press **F9**): Steps into next statement
- c. **Debug > Step Out** (or press **Shift + F11**): Steps out of current function
- d. **Debug > Step ASM** (or press **Shift + F10**): If the current line is C code, the line is located in the first file and that line is executed

Figure 3-14. Debug Options

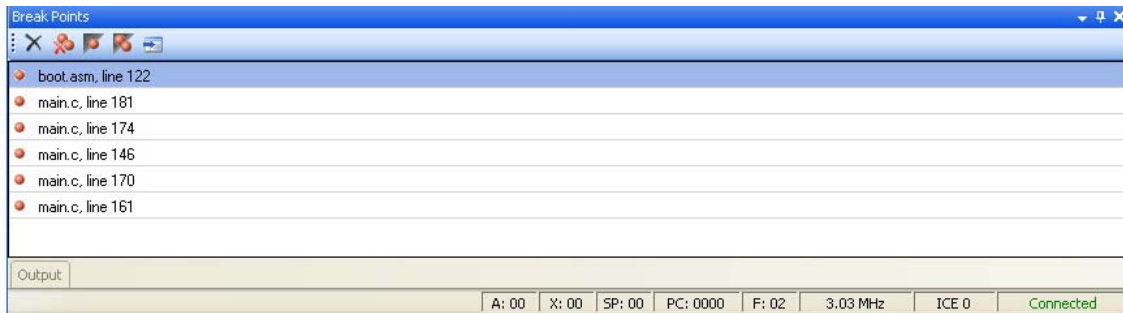


3.1.5.1 Break Points

The break point feature allows you to stop program execution at predetermined address locations. When a break point is encountered, the program stops at the address of the break point, without executing the address code. The program can be restarted using the available menu or icon options.

To set break points, first open the file to debug. Right-click the mouse at specific points and select **Insert Break Point**. You can view and remove active break points in the Break Points window. To open the Break Points window, select **Debug > Windows > Break Points**.

Figure 3-15. Break Points Window



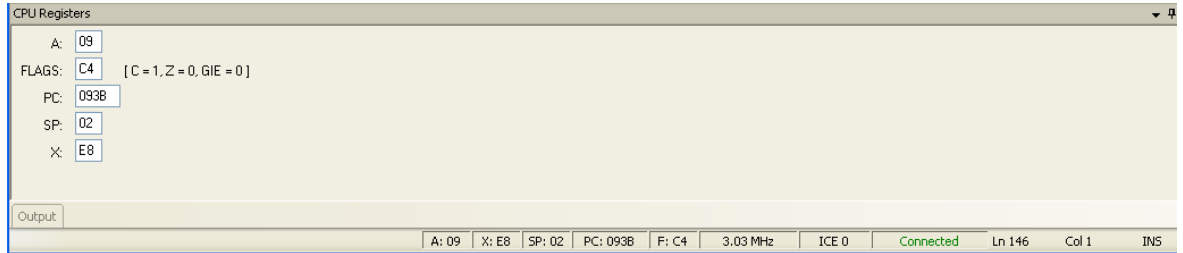
3.1.5.2 CPU and Register Views

During debugging, you can read and write in five areas: CPU registers, bank registers 0, bank registers 1, RAM, and flash. The CPU registers are shown in their own window (**Debug > Windows >**

Registers) and in the notification area at the bottom of PSoC Designer. The other four areas can be viewed in the Memory Window (**Debug > Windows > Memory**). Select one of the four memory areas from the **Address Space** box.

CPU Registers: This window allows you to examine and change the contents of the CPU registers. Data is entered in hexadecimal notation. CPU register values can be viewed across the bottom of PSoC Designer.

Figure 3-16. CPU Register in Memory Window

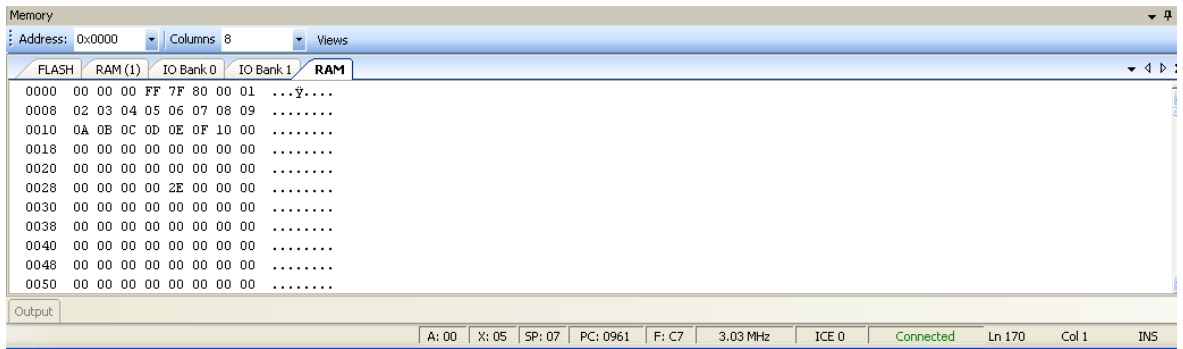


RAM: RAM locations can be modified by clicking the data at the specific location and typing in the new value. Data is entered in hexadecimal notation.

Flash: The flash window displays the data stored in flash. This is the program memory; it is read-only.

Bank Registers 0 and 1: You can scroll through the register bank to view the values in the register bank. Type a new value into the **Offset** to scroll directly to that offset. Click next to a value and type a new value for the register.

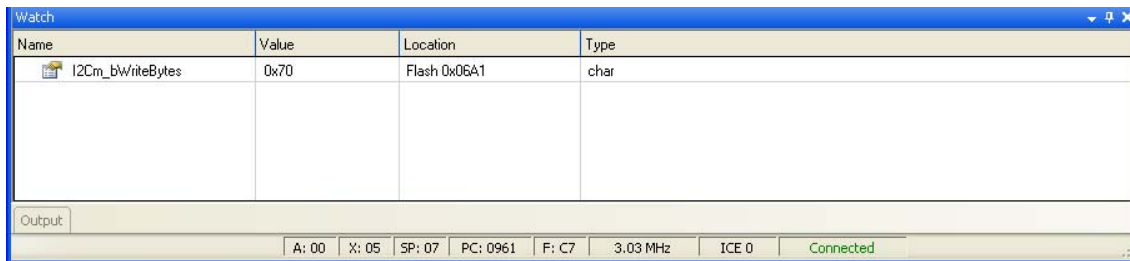
Figure 3-17. Memory Window



3.1.5.3 Watch Variables

To set watch variables, right-click a variable in a source file and select **Add Watch**. You can also select **Global Variables**. Right-click **Add**, **Delete**, or **Properties** in the Watch/Global Name window to add, delete, or modify values.

Figure 3-18. Watch Variables Window

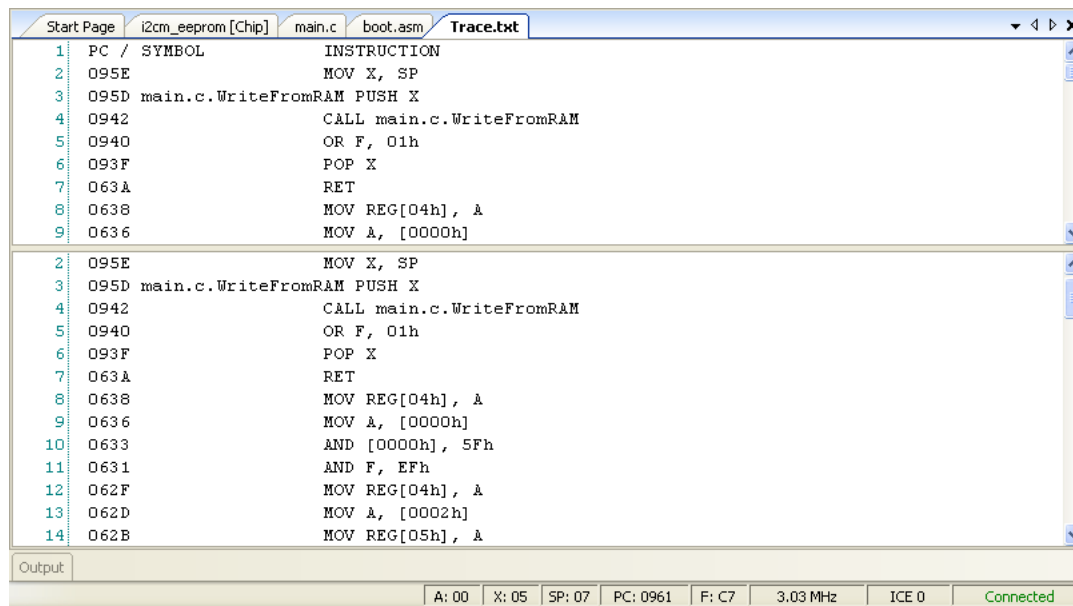


3.1.5.4 Trace

The Trace window is displayed when **Debug > Windows > Trace** is chosen. It displays a continuous, configurable listing of project symbols and operations from the last break point. The trace shows symbolic, rather than address data, to enhance readability.

Each time the program executes, the trace buffer is cleared. When the trace buffer becomes full, it continues to operate and overwrite old data.

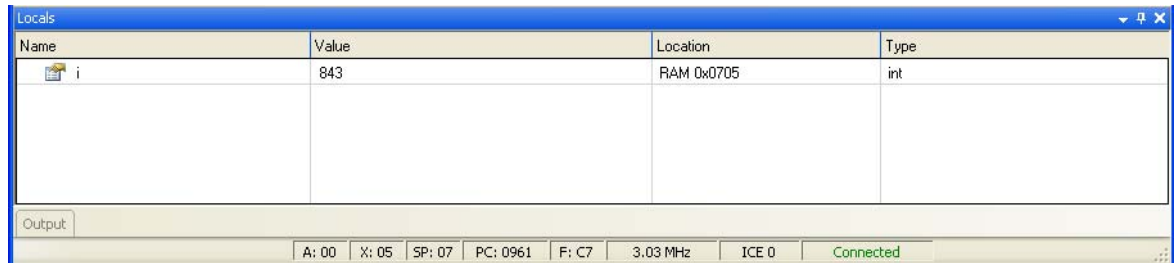
Figure 3-19. Trace Window



3.1.5.5 Locals

A separate window is available for local variables. Whenever execution halts, the local variables are updated to the current value.

Figure 3-20. Locals Window

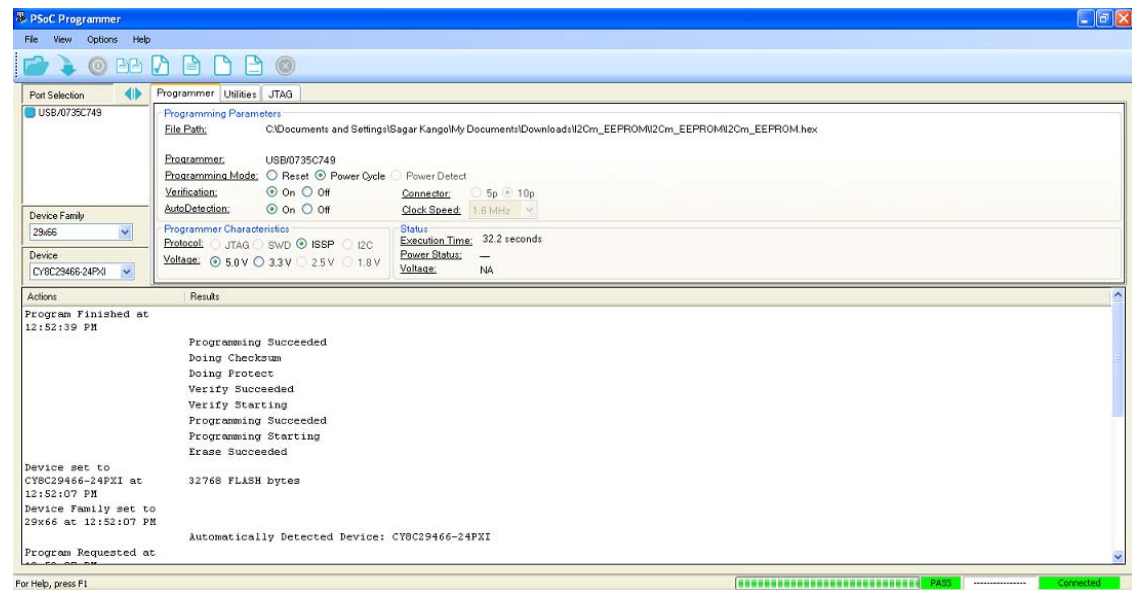


WARNING The time taken to execute a system supervisory call (SSC) such as FlashRead/Write, Table Read, and Erase Block is significantly more while emulating a code through ICE-Cube when compared to the time taken when running the code on chip.

3.2 PSoC Programmer

PSoC Programmer is used as a standalone application to program PSoC devices. It can be launched within PSoC Designer or accessed from the desktop as a standalone program.

Figure 3-21. PSoC Programmer Interface



To program a target board using PSoC Programmer via ICE-Cube pod connector, follow these steps:

1. Set up all hardware, including the device to be programmed.
2. Disconnect power from the target board.
3. Launch PSoC Programmer:
 - a. From the desktop, click **Start > All Programs > Cypress > PSoC Programmer**.
 - b. From within PSoC Designer, click **Program > Program Part**.
4. Click **File Load** to select a file for programming.
5. Select the port used to connect the programmer.
6. Select the device family and device used to generate the hex file.
7. Select **Reset** under programming mode.