



Chipsmall Limited consists of a professional team with an average of over 10 year of expertise in the distribution of electronic components. Based in Hongkong, we have already established firm and mutual-benefit business relationships with customers from,Europe,America and south Asia,supplying obsolete and hard-to-find components to meet their specific needs.

With the principle of “Quality Parts,Customers Priority,Honest Operation,and Considerate Service”,our business mainly focus on the distribution of electronic components. Line cards we deal with include Microchip,ALPS,ROHM,Xilinx,Pulse,ON,Everlight and Freescale. Main products comprise IC,Modules,Potentiometer,IC Socket,Relay,Connector.Our parts cover such applications as commercial,industrial, and automotives areas.

We are looking forward to setting up business relationship with you and hope to provide you with the best service and solution. Let us make a better world for our industry!



## Contact us

Tel: +86-755-8981 8866 Fax: +86-755-8427 6832

Email & Skype: info@chipsmall.com Web: www.chipsmall.com

Address: A1208, Overseas Decoration Building, #122 Zhenhua RD., Futian, Shenzhen, China



The Environmental Sensing Kit requires the CY3271 Kit for operation. This quick start guide assumes you are familiar with the CY3271, its operation, and programming of PSoC devices. If not, refer to the users guide on the CD.

1



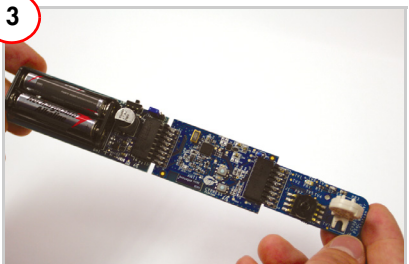
Install all software in the CY3271 kit.

2



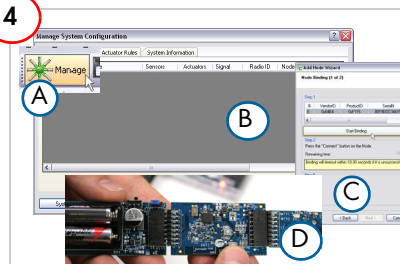
Program the RF Expansion board with *RF\_I2C\_Bridge.hex* from the CD.

3



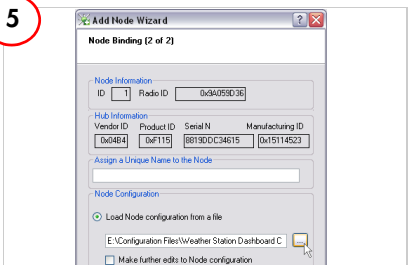
Connect the battery board, RF Expansion board, and the Weather Station board.

4



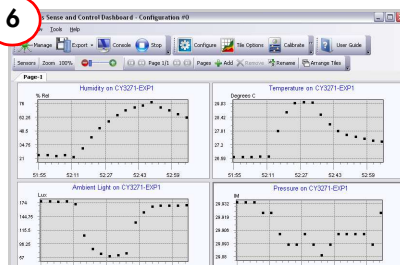
Launch Sense and Control Dashboard and 'bind' the RF Expansion board.

5



Click 'Load Node configuration from a file' and select *Weather\_Station\_Dashboard\_Configuration.xml* from the CD.

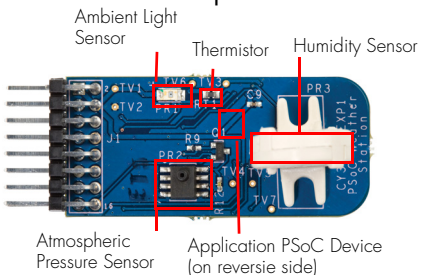
6



Monitor, chart, and record data from all sensors. See the user guide for other CY3271 projects.

# CY3271-EXP1-EX1 ENVIRONMENTAL MONITORING KIT QUICK START GUIDE

## Weather Station Expansion Board

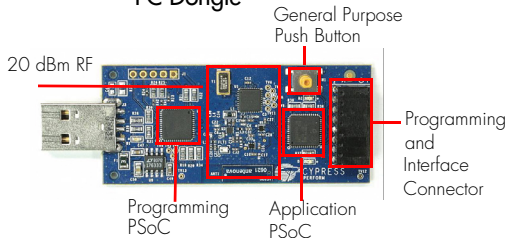


## Pigtail Thermistor Expansion Board

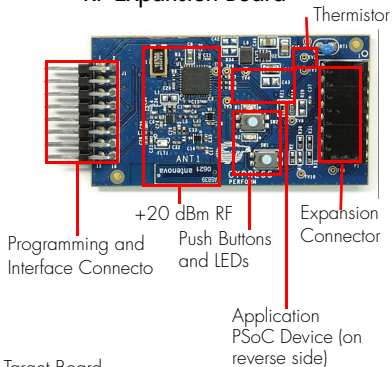


## CY3271 Hardware (Required for Operation)

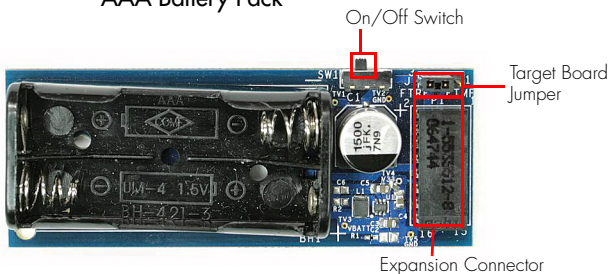
### PC Dongle



### RF Expansion Board



### AAA Battery Pack



For the latest information about this kit, visit  
[www.cypress.com/go/CY3271-EXP1](http://www.cypress.com/go/CY3271-EXP1)

