



Chipsmall Limited consists of a professional team with an average of over 10 year of expertise in the distribution of electronic components. Based in Hongkong, we have already established firm and mutual-benefit business relationships with customers from,Europe,America and south Asia,supplying obsolete and hard-to-find components to meet their specific needs.

With the principle of "Quality Parts,Customers Priority,Honest Operation,and Considerate Service",our business mainly focus on the distribution of electronic components. Line cards we deal with include Microchip,ALPS,ROHM,Xilinx,Pulse,ON,Everlight and Freescale. Main products comprise IC,Modules,Potentiometer,IC Socket,Relay,Connector.Our parts cover such applications as commercial,industrial, and automotives areas.

We are looking forward to setting up business relationship with you and hope to provide you with the best service and solution. Let us make a better world for our industry!



## Contact us

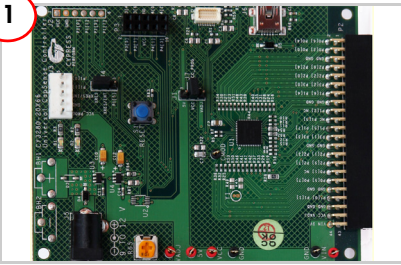
Tel: +86-755-8981 8866 Fax: +86-755-8427 6832

Email & Skype: info@chipsmall.com Web: www.chipsmall.com

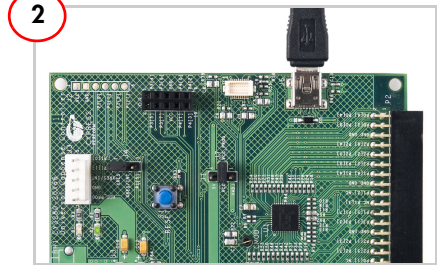
Address: A1208, Overseas Decoration Building, #122 Zhenhua RD., Futian, Shenzhen, China



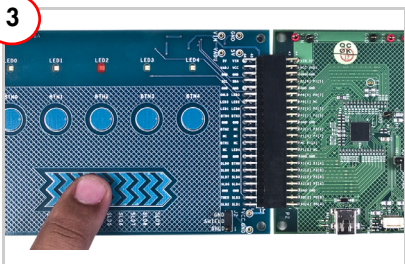
# CY3280-20x66 UNIVERSAL CAPSENSE CONTROLLER KIT QUICK START GUIDE



Remove CY3280-20x66 Universal CapSense Controller Board from package. Connect the CY3280-SLM board (to be purchased separately) to the P2 connector.



Ensure that shunt is placed between 5 V and VCC of jumper J1. Plug in the USB cable to the CY3280-20x66 Universal CapSense Controller Board.



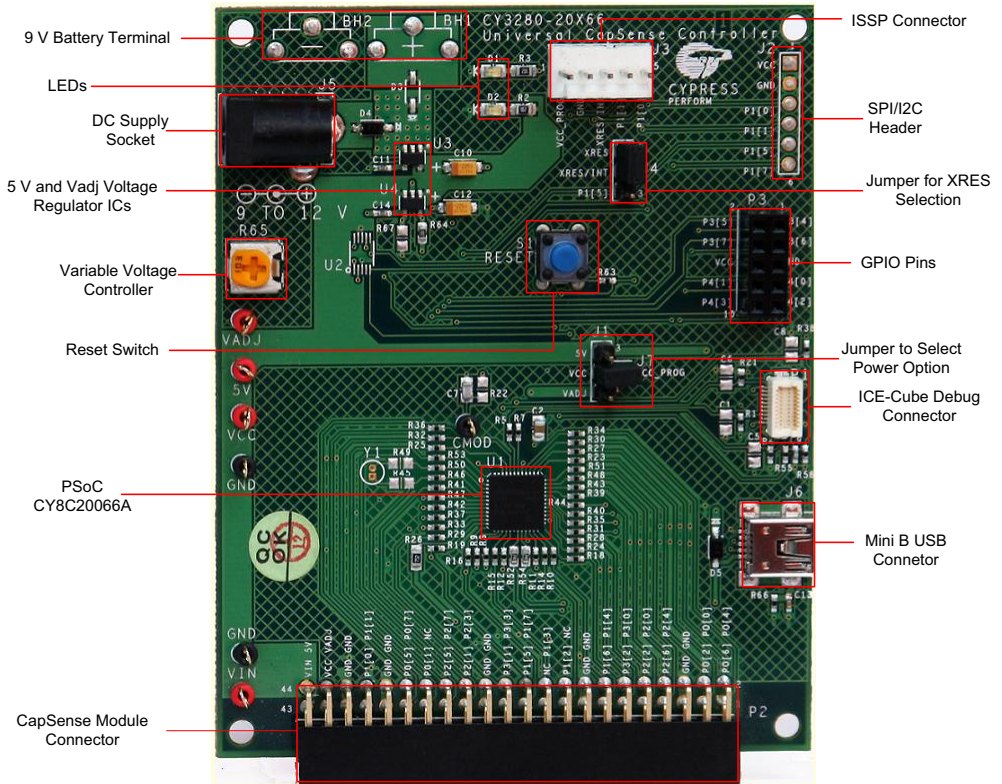
Touch the CapSense button or slider. The respective LEDs lights up.



Insert the kit CD into the CD drive of your PC. Install the kit contents, PSoC Designer, PSoC Programmer, and Bridge Control Panel. After the kit contents and software are installed, PSoC Designer can be used to customize existing example projects or create new ones.



## CY3280-20x66 Universal CapSense Controller Board Details



For the latest information about this kit visit  
[www.cypress.com/go/CY3280-20x66](http://www.cypress.com/go/CY3280-20x66)

