



Chipsmall Limited consists of a professional team with an average of over 10 year of expertise in the distribution of electronic components. Based in Hongkong, we have already established firm and mutual-benefit business relationships with customers from,Europe,America and south Asia,supplying obsolete and hard-to-find components to meet their specific needs.

With the principle of “Quality Parts,Customers Priority,Honest Operation,and Considerate Service”,our business mainly focus on the distribution of electronic components. Line cards we deal with include Microchip,ALPS,ROHM,Xilinx,Pulse,ON,Everlight and Freescale. Main products comprise IC,Modules,Potentiometer,IC Socket,Relay,Connector.Our parts cover such applications as commercial,industrial, and automotives areas.

We are looking forward to setting up business relationship with you and hope to provide you with the best service and solution. Let us make a better world for our industry!



Contact us

Tel: +86-755-8981 8866 Fax: +86-755-8427 6832

Email & Skype: info@chipsmall.com Web: www.chipsmall.com

Address: A1208, Overseas Decoration Building, #122 Zhenhua RD., Futian, Shenzhen, China



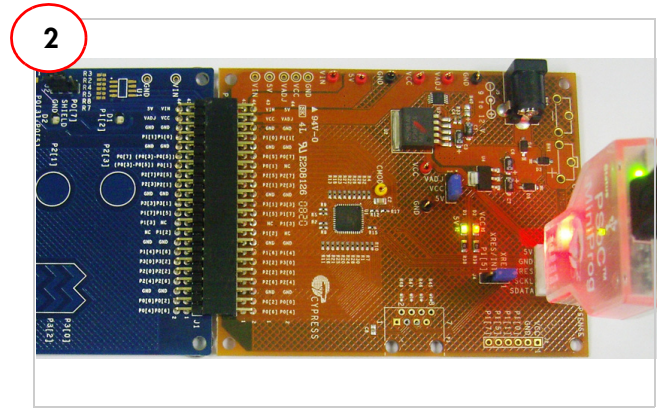
CY3280-BK1 UNIVERSAL CAPSENSE® CONTROLLER BASIC KIT 1

QUICK START GUIDE

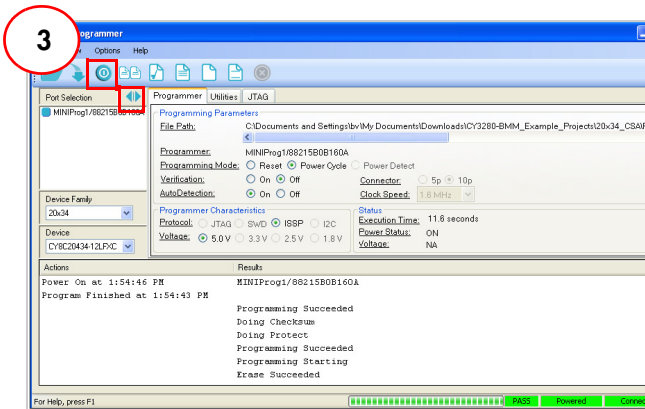


1. Insert the kit CD/DVD into the CD/DVD drive of your PC.
2. Install the kit contents, PSoC Designer, and PSoC Programmer, by clicking on the **Install CY3280-BK1...** button.

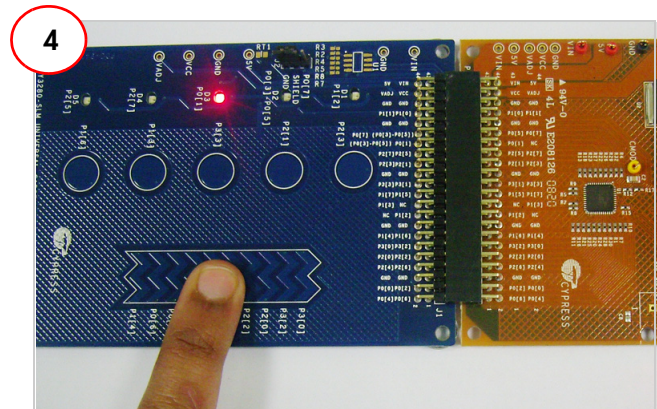
After installation, the kit contents are available at
 <Install_Directory>\Cypress\CY3280-BK1\<version>



1. Connect the CY3280-SLM board to the CY3280-20x34 UCC board's P2 connector.
2. In the CY3280-20x34 board, ensure that the jumper is placed on header J1 to short pins 2 and 3 (Vcc and 5V).
3. In the CY3280-SLM board, ensure that the jumper is placed on header J2 to short pins 2 and 3 (Shield and Ground pins).



1. Connect the MiniProg1 to the CY3280-20x34 UCC board's ISSP connector (J3). Connect it to your PC using an USB A to mini-B cable.
2. Open PSoC Programmer.
3. Click **Connect**; connect MiniProg1 to your PC.
4. Click the **Toggle** button to power the board.



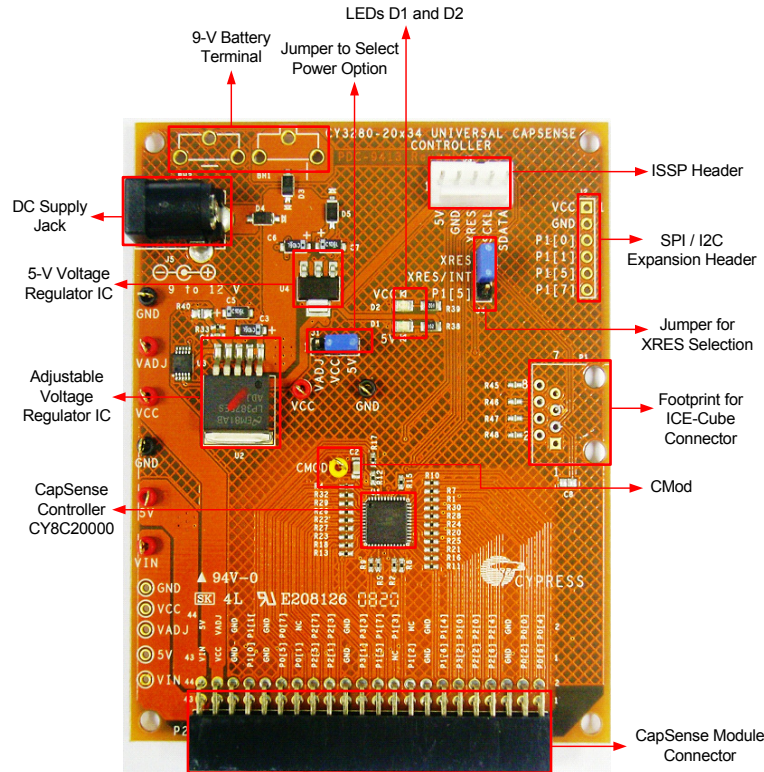
1. Touch and move your finger over the linear slider on the CY3280-SLM module board. The corresponding LEDs on the CY3280-SLM board light up.
2. Touch a button. The corresponding LED on the CY3280-SLM module board lights up.
3. You can touch multiple buttons simultaneously. The linear slider and buttons can be used at the same time.

Repeat steps 2, 3, and 4 to test the CY3280-21x34 CapSense Controller.

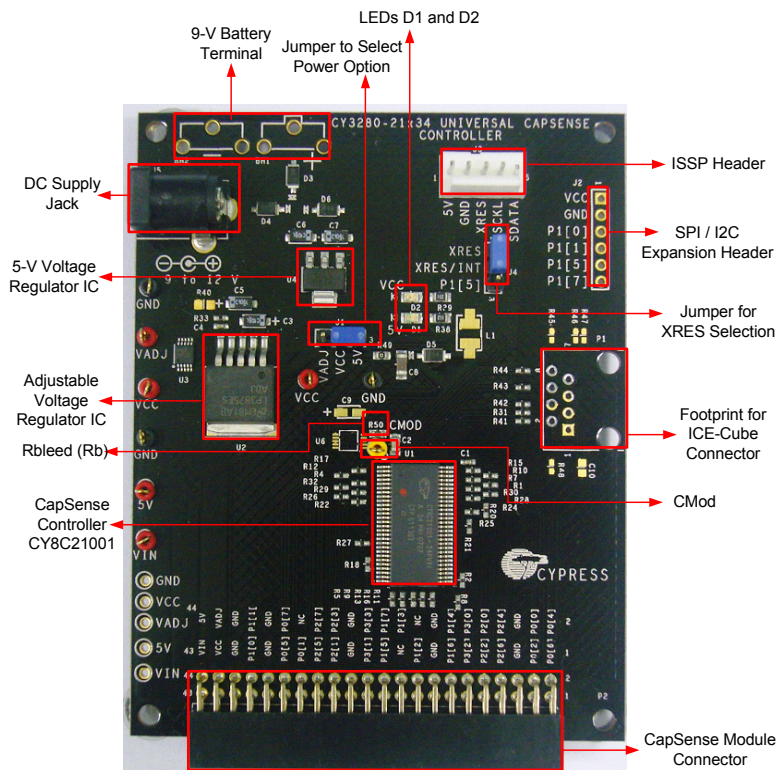
CY3280-BK1 UNIVERSAL CAPSENSE® CONTROLLER BASIC KIT 1

QUICK START GUIDE

CY3280-20x34 Board Details



CY3280-21x34 Board Details



For the latest information about this kit, visit <http://www.cypress.com/go/CY3280-BK1>

