



Chipsmall Limited consists of a professional team with an average of over 10 year of expertise in the distribution of electronic components. Based in Hongkong, we have already established firm and mutual-benefit business relationships with customers from,Europe,America and south Asia,supplying obsolete and hard-to-find components to meet their specific needs.

With the principle of "Quality Parts,Customers Priority,Honest Operation,and Considerate Service",our business mainly focus on the distribution of electronic components. Line cards we deal with include Microchip,ALPS,ROHM,Xilinx,Pulse,ON,Everlight and Freescale. Main products comprise IC,Modules,Potentiometer,IC Socket,Relay,Connector.Our parts cover such applications as commercial,industrial, and automotives areas.

We are looking forward to setting up business relationship with you and hope to provide you with the best service and solution. Let us make a better world for our industry!



Contact us

Tel: +86-755-8981 8866 Fax: +86-755-8427 6832

Email & Skype: info@chipsmall.com Web: www.chipsmall.com

Address: A1208, Overseas Decoration Building, #122 Zhenhua RD., Futian, Shenzhen, China



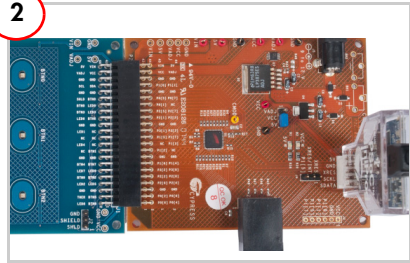
1



1. Insert the kit DVD in the DVD drive.
2. Install PSoC Designer and PSoC Programmer.

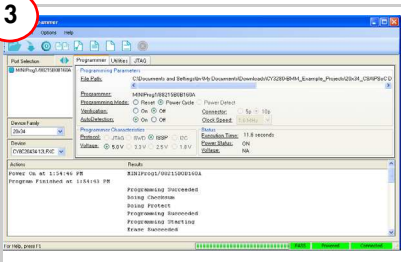
Note The hardware prerequisites for this kit are CY3280-20x34 Universal CapSense Controller (UCC) board and MiniProg1.

2



1. Connect the CY3280-BSM board to the CY3280-20x34 UCC board's P2 connector.
2. In the CY3280-20x34 board, place the jumper on header J1 to short pins 2 and 3. In the CY3280-BSM board, place the jumper on header J2 to short pins 2 and 3.
3. Connect MiniProg1 to the CY3280-20x34 UCC board's ISSP connector (J3). Connect it to your PC using a USB cable.

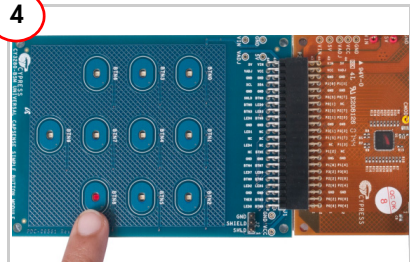
3



1. In PSoC Programmer, click File > File Load. Browse and load *CY3280_BSM_20x34.hex*.
2. Click the Connect button. Select Power Cycle mode
3. Click the Program button.
4. Click the Toggle power button.

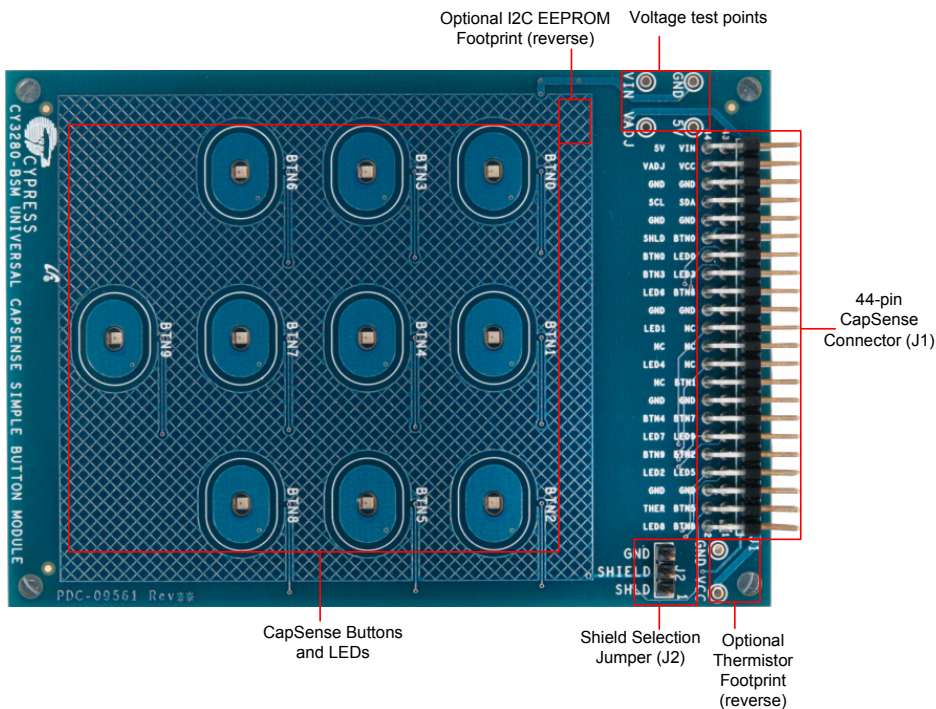
Note The hex file is located at:
<Install_directory>\Cypress\
CY3280-BSM\<version>\Firmware\
20x34_CSA\CY3280_BSM_20x34\
CY3280_BSM_20x34\

4



1. When you touch a button, the corresponding LED on the module board lights up, indicating the button you touched.
2. Touch the same button to turn off the LED. You can touch multiple buttons simultaneously.

CY3280-BSM Kit Details



Note For more details on code examples, see the PDF accompanying the project in the Firmware folder (for example, Readme_BSM_20x34.pdf) in the directory: <Install directory>\Cypress\CY3280-BSM\<version>\Firmware\20X30_CSA\
CY3280-BSM can be used with any of the following UCCs: CY3280-20x66, CY3280-24x94, or CY3280-21x34 (ordering part number is CY3280-BK1).

For the latest information about this kit, visit
www.cypress.com/go/CY3280-BSM

