



Chipsmall Limited consists of a professional team with an average of over 10 year of expertise in the distribution of electronic components. Based in Hongkong, we have already established firm and mutual-benefit business relationships with customers from,Europe,America and south Asia,supplying obsolete and hard-to-find components to meet their specific needs.

With the principle of “Quality Parts,Customers Priority,Honest Operation,and Considerate Service”,our business mainly focus on the distribution of electronic components. Line cards we deal with include Microchip,ALPS,ROHM,Xilinx,Pulse,ON,Everlight and Freescale. Main products comprise IC,Modules,Potentiometer,IC Socket,Relay,Connector.Our parts cover such applications as commercial,industrial, and automotives areas.

We are looking forward to setting up business relationship with you and hope to provide you with the best service and solution. Let us make a better world for our industry!



## Contact us

Tel: +86-755-8981 8866 Fax: +86-755-8427 6832

Email & Skype: info@chipsmall.com Web: www.chipsmall.com

Address: A1208, Overseas Decoration Building, #122 Zhenhua RD., Futian, Shenzhen, China





## **CY3280-CPM1 CapSense<sup>®</sup> Plus Module Development Kit Quick Start Guide**

Doc. # 001-51974 Rev. \*A

Cypress Semiconductor  
198 Champion Court  
San Jose, CA 95134-1709  
Phone (USA): 800.858.1810  
Phone (Intl): 408.943.2600  
<http://www.cypress.com>



# 1. Kit Contents

Each CY3280-CPM1 CapSense® Plus Module Development Kit contains:

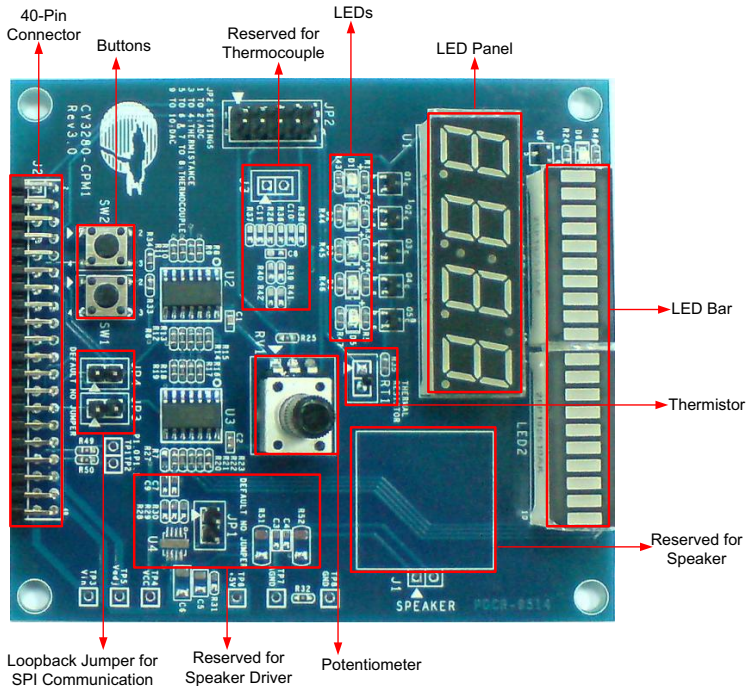
- CY3280-CPM1 CapSense Plus Module Board
- CY3280-CPM1 Kit CD
- Quick Start Guide

Universal CapSense Module boards are available for purchase separately. For more information, visit <http://www.cypress.com/shop>.

Prerequisites:

- CY3280-22x45/CY3280-28xxx Universal CapSense Controller Board
- PSoC MiniProg
- USB Mini-B Cable

# 2. Module Hardware



The module board consists of an LED panel, a potentiometer, an LED bar, six LEDs, a thermistor, and two buttons. These are interfaced to the CapSense Controller board via a 40-pin receptacle connector (J2). The board also consists of two loop-back connection jumpers (JP3 and JP4) to demonstrate the variable length SPI master-slave communication.

## 3. Getting Started

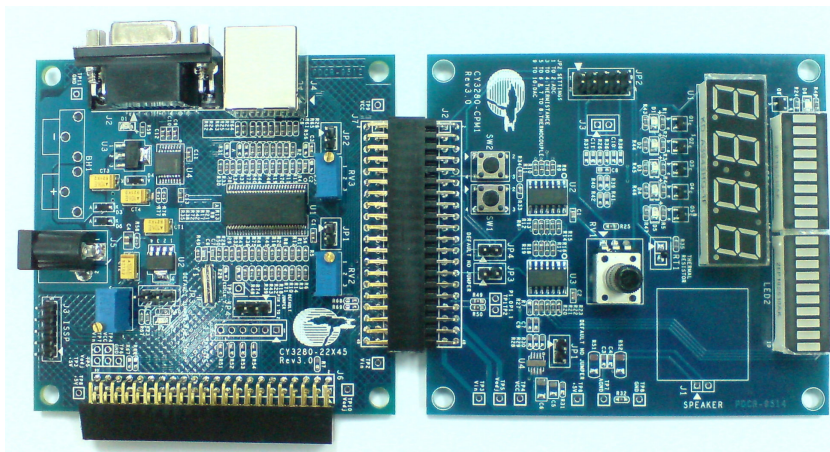
CY3280-CPM1 kit can be connected to the CY3280-22x45 or CY3280-28xxx Universal CapSense Controller boards. Insert the kit CD into the CD/DVD drive of your PC and follow the instructions to complete the installation.

## 4. Board Setup

This section uses one example firmware to demonstrate the setup of CY3280-CPM1 with CY3280-20x45 Universal CapSense Controller board. Similar procedure is followed for the CY3280-28xxx board. Refer to the CY3280-CPM1 kit guide for more examples.

### 4.1 Real Time Clock (RTC) Setup

1. Connect the CY3280-CPM1 board to the CY3280-22x45 Universal CapSense Controller board's P2 receptacle connector.



2. Connect your PC to the CY3280-22x45 Universal CapSense Controller board's ISSP connector (J3) using a PSoC MiniProg and an USB cable.

3. Program the RTC lab hex file to the CY3280-22x45 board. Refer to the quick start guide of CY3280-22x45 UCC board for detailed program procedure.
4. Unplug the MiniProg from the CY3280-22x45 board.
5. Disconnect JP3 and JP4 of CY3280-CPM1 board.
6. Power the CY3280-22x45 board.

## 5. Test the Board

The elapsed time is displayed on the LED panel in real time. You can also test the board with the other code examples available on the CD.

## 6. Design Support and Resources

A wealth of information about PSoC Designer™ and CapSense are available on [www.cypress.com](http://www.cypress.com). For knowledge base articles, customer forums, and online application support, visit [www.cypress.com/support](http://www.cypress.com/support).

©2009-2011 Cypress Semiconductor Corporation. PSoC and CapSense are registered trademarks of Cypress Semiconductor Corp. All other trademarks or registered trademarks referenced herein are property of the respective corporations.



Cypress Semiconductor Corporation  
198 Champion Ct., San Jose, CA 95134 USA  
[www.cypress.com](http://www.cypress.com)



If you have questions, call  
**Cypress Customer Support**  
+1 (800) 541-4736 Ext. 8 (in the USA),  
+1 (408) 943-2600 Ext. 8 (International),  
or visit [www.cypress.com/go/support](http://www.cypress.com/go/support)  
Doc. # 001-51974 Rev. \*A