



Chipsmall Limited consists of a professional team with an average of over 10 year of expertise in the distribution of electronic components. Based in Hongkong, we have already established firm and mutual-benefit business relationships with customers from,Europe,America and south Asia,supplying obsolete and hard-to-find components to meet their specific needs.

With the principle of "Quality Parts,Customers Priority,Honest Operation,and Considerate Service",our business mainly focus on the distribution of electronic components. Line cards we deal with include Microchip,ALPS,ROHM,Xilinx,Pulse,ON,Everlight and Freescale. Main products comprise IC,Modules,Potentiometer,IC Socket,Relay,Connector.Our parts cover such applications as commercial,industrial, and automotives areas.

We are looking forward to setting up business relationship with you and hope to provide you with the best service and solution. Let us make a better world for our industry!



Contact us

Tel: +86-755-8981 8866 Fax: +86-755-8427 6832

Email & Skype: info@chipsmall.com Web: www.chipsmall.com

Address: A1208, Overseas Decoration Building, #122 Zhenhua RD., Futian, Shenzhen, China



CY3280-SLM UNIVERSAL CAPSENSE™ LINEAR SLIDER MODULE KIT QUICK START GUIDE

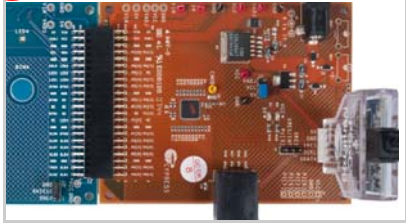
1



1. Insert the kit CD in the CD drive.
2. Install the kit contents, PSoC Designer, and PSoC Programmer.
3. The hardware prerequisites for this kit are the CY3280-20x34* Universal CapSense Controller (UCC) board and MiniProg 1.

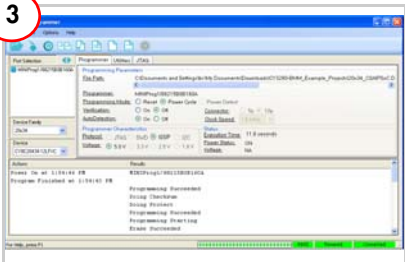
* **Note** The ordering part number for CY3280-20x34 UCC is CY3280 - BK1.

2



1. Connect the CY3280-SLM board to the CY3280-20x34 UCC board's P2 connector.
2. In the CY3280-20x34 board, place the jumper on header J1 to short pins 2 and 3.
3. In the CY3280-SLM board, place the jumper on header J2 to short pins 2 and 3.

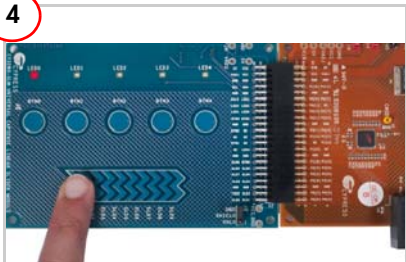
3



1. Connect MiniProg 1 to the CY3280-20x34 UCC Board's ISSP connector (J3). Connect it to your PC using a USB cable.
2. Open PSoC Programmer and click File>File Load. Browse and load the *CY3280_20x34_PD_Project1.hex* file*.
3. Click Connect; connect MiniProg 1 to PC.
4. Click Program button to program the device.
5. Click Toggle button to power the board.

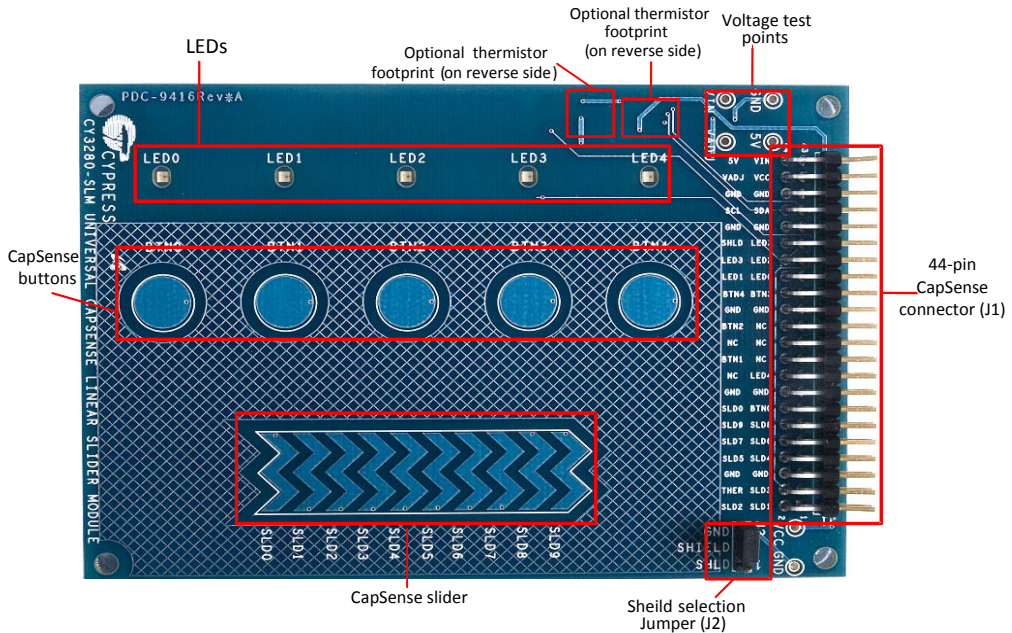
* **Note** These files are located at: <Install directory>\Cypress\CY3280-SLM\<version>\Firmware

4



1. Touch and move the linear slider on the CY3280-SLM module board. The corresponding LEDs on the CY3280-SLM board light up.
2. Touch a button. The corresponding LED on the CY3280-SLM module board lights up.
3. You can touch multiple buttons at the same time. The linear slider and buttons can be used at the same time.

CY3280-SLM Kit Details



Notes

- For more details on code examples, refer to the PDF file along with the project in the Firmware folder (for example, *21x34_CSD PD project 1.pdf*) in the following directory:
 <Install directory> \Cypress\CY3280-SLM\<version>\Firmware\21x34_CSD\PD project 1.
- CY3280-SLM can be used with any of the following UCCs:
 - CY3280- 20x66
 - CY3280- 24x94
 - CY3280- 21x34 (ordering part number is CY3280-BK1)

For the latest information about this kit visit
www.cypress.com/go/CY3280-SLM

