



Chipsmall Limited consists of a professional team with an average of over 10 year of expertise in the distribution of electronic components. Based in Hongkong, we have already established firm and mutual-benefit business relationships with customers from,Europe,America and south Asia,supplying obsolete and hard-to-find components to meet their specific needs.

With the principle of “Quality Parts,Customers Priority,Honest Operation,and Considerate Service”,our business mainly focus on the distribution of electronic components. Line cards we deal with include Microchip,ALPS,ROHM,Xilinx,Pulse,ON,Everlight and Freescale. Main products comprise IC,Modules,Potentiometer,IC Socket,Relay,Connector.Our parts cover such applications as commercial,industrial, and automotives areas.

We are looking forward to setting up business relationship with you and hope to provide you with the best service and solution. Let us make a better world for our industry!



Contact us

Tel: +86-755-8981 8866 Fax: +86-755-8427 6832

Email & Skype: info@chipsmall.com Web: www.chipsmall.com

Address: A1208, Overseas Decoration Building, #122 Zhenhua RD., Futian, Shenzhen, China



Features

- Supports these field-programmable clock generators: CY2077FS, CY2077FZ, CY22050KF, CY22150KF, CY22381F, CY22392F, CY22393F, CY22394F, CY22395F, CY23FP12, CY25100XCF/IF, CY25100SXC/IF, CY25200KF, CY25701FLX
- Allows quick and easy prototyping
- Easy to use Microsoft® Windows® 95, 98, NT, 2K, ME, XP-compatible interface
- User-friendly CyClockWizard™ software for JEDEC file development

CY3672-USB Kit Contents

- CY3672 programmer base unit
- CD ROM with CY3672 software and USB driver
- USB cable
- AC/DC power adapter
- User's manual

Functional Description

The CY3672-USB programming kit enables any user with a PC to quickly and easily program Field-programmable Clock Generators. The only setup requirements are a power connection and a USB port connection with the PC, as shown in Figure 2 on page 2.

Using CyClockWizard software, users can configure their parts to a given specification and generate the corresponding JEDEC file.

The JEDEC file is then loaded into CY3672-USB software that communicates with the programmer. The CY3672-USB software has the ability to read and view the EPROM table from a programmed device. The programming flow is outlined in Figure 1.

Setup

Hardware

The CY3672-USB programming kit has a simple setup procedure. A socket adapter must be inserted into the CY3672 base unit. Available socket adapters are listed in Table 1, and are ordered separately. No socket adapters are included in the CY3672-USB Clock Programming Kit. As shown in Figure 2 on page 2, only two connections are required. The programmer connects to a PC through a USB cable, and receives power through the AC/DC adapter that connects to a standard 110 V/220 V wall outlet.

Figure 1. Programming Procedure

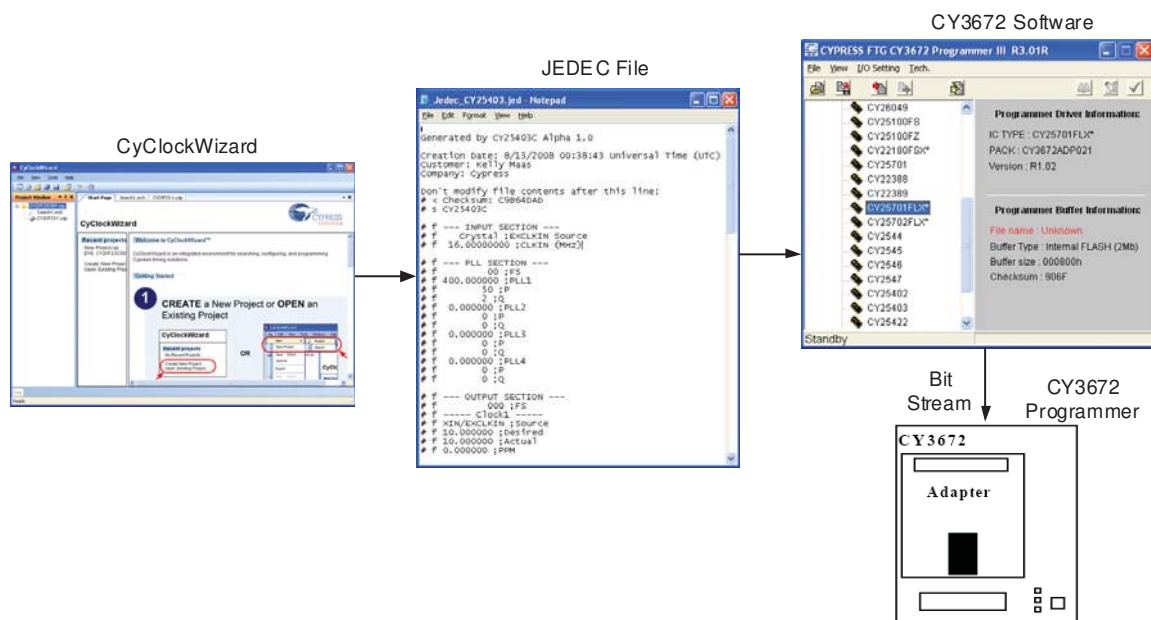


Figure 2. CY3672 Programming Kit Setup

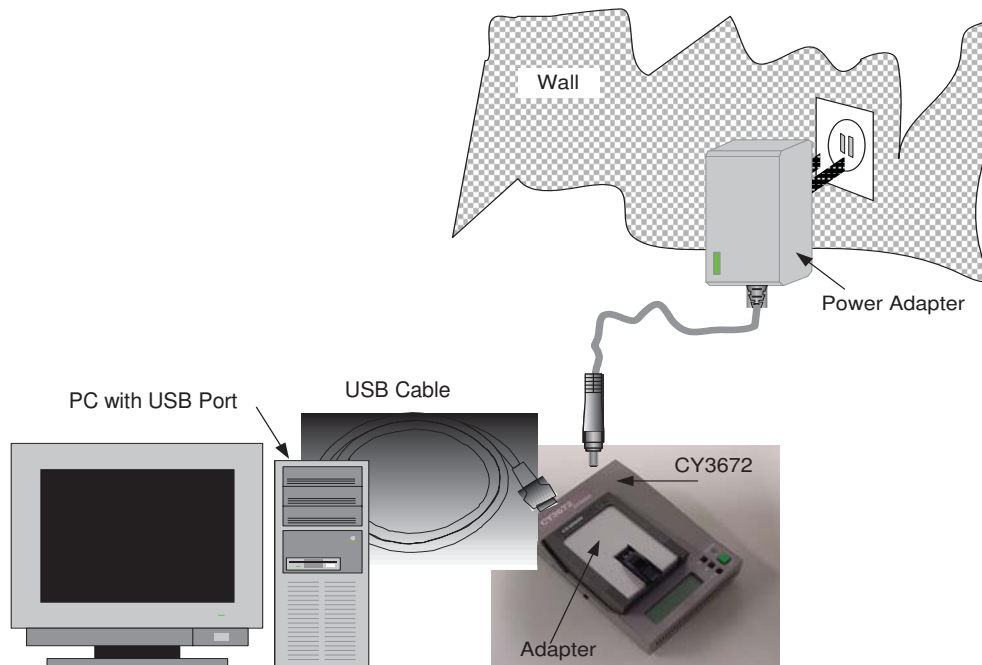


Figure 3 is a close-up of the socket adapter and illustrates the correct orientation for placing the device into the socket. Pin1 must always be in the lower left corner, as shown in Figure 3.

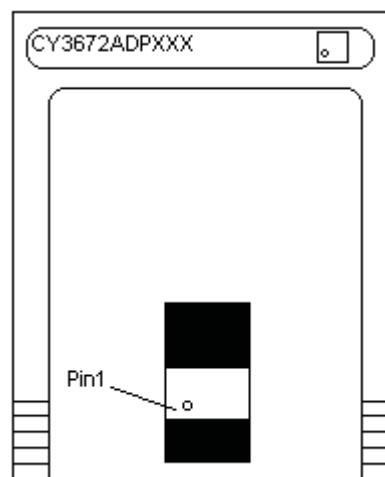
Software

Setting up the software is just as easy as setting up the hardware. It is important to note that the CY3672 programmer software is separate and distinct from the software used to configure devices and generate the JEDEC format programming file.

The CY3672 programmer software is included on the CD that ships with the programmer. The latest revision can also be downloaded from the Cypress web site www.cypress.com. A USB driver is included as part of the installation package. See the next section for setup details.

CyClockWizard configuration software is also downloadable from the Cypress web site.

Figure 3. Device Orientation



Quick Start Guide

Go through the following steps to properly configure and use the CY3672.

1.
 - Insert the CY3672 software CD, or download and unzip the CY3672 from the website. Connect the CY3672 power supply, connect the USB cable to the programmer and PC, and turn on the power switch. When the PC detects the new hardware, follow the wizard and search for the suitable driver either from the CD-ROM or from the USB unzipped CY3672 software folder.
 - Use the programmer arrow buttons to set the programmer LCD display to "TYPE"
2.
 - Install CyClockWizard configuration software, available at www.cypress.com
 - Install the CY3672 software onto your computer by running SETUP.EXE.
3. Use CyClockWizard to generate a JEDEC file for the device you wish to program.
4. Open up the CY3672 software: go to Start Menu > Programs > Cypress > CY3672 or the location where the software was installed.
5. Double click on the device that you wish to program under the menu on the left side of the screen, see [Figure 4](#).
6. Click on the "Start" button at the bottom of the popup window, see [Figure 5](#).
7. Browse to and select the JEDEC file which you created earlier in step 4 and click on "Open".
8. Click "Yes" when the Upload Message screen pops up.
9. Once you see "Complete..." on the status bar at the bottom of the window click on the "Program IC" icon at the top right of the window (see [Figure 4](#)).
10. When you see a window with "Socket 1... Program OK." pop up you have successfully programmed a device.^[1]

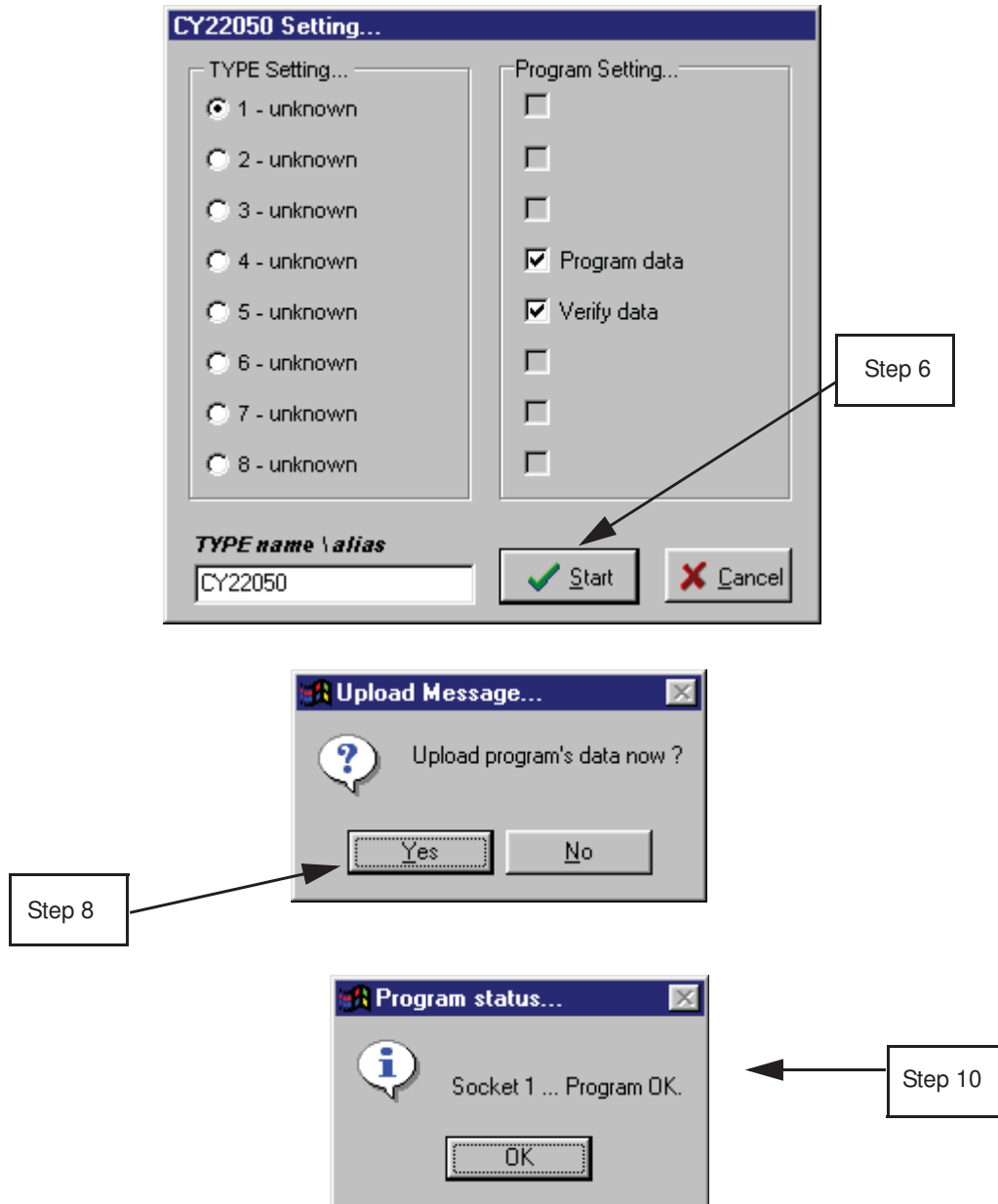
Figure 4. CY3672 Software, Device Selection Page



Note

1. For more detailed information on all the functions of the software and programmer, please see the user manual.

Figure 5. CY3672 Software, Programming Sequence



Socket Adapters

Socket adapters and the CY3672-USB Programming Kit can be ordered at <http://www.cypress.com>, where they are categorized as development kits. [Table 1](#) lists the available socket adapters and their corresponding devices and configuration software.

Table 1. Available Socket Adapters

| Adapter Part Number | Adapter Label | Programmable Device | Configuration Software |
|---------------------|---------------|--|------------------------------|
| CY3690 | CY3672ADP009 | CY25100ZXCF / ZXIF (TSSOP) | CyClockWizard ^[2] |
| CY3691 | CY3672ADP008 | CY25100SXCF / SXIF (SOIC) | CyClockWizard ^[2] |
| CY3692 | CY3672ADP006 | CY23FP12 | CyClockWizard ^[3] |
| CY3695 | CY3672ADP000 | CY22050KF, CY22150KF | CyClockWizard ^[3] |
| | | CY25200KF | CyClockWizard ^[2] |
| CY3696 | CY3672ADP001 | CY2077FS (SOIC) | CyClockWizard ^[4] |
| CY3697 | CY3672ADP002 | CY2077FZ (TSSOP) | CyClockWizard ^[4] |
| CY3698 | CY3672ADP003 | CY22392F, CY22393F, CY22394F, CY22395F | CyClockWizard ^[3] |
| CY3699 | CY3672ADP004 | CY22381F | CyClockWizard ^[3] |
| CY3724 | CY3672ADP021 | CY25701FLX | CyClockWizard ^[2] |

Ordering Information

| Ordering Code | Description | Operating Voltage |
|---------------|---|-------------------|
| CY3672-USB | Clock programming kit with base unit | 110 V/220 V |
| CY3690 | Socket adapter for CY25100ZXCF / ZXIF (TSSOP) | N/A |
| CY3691 | Socket adapter for CY25100SXCF / SXIF (SOIC) | N/A |
| CY3692 | Socket adapter for CY23FP12 | N/A |
| CY3695 | Socket adapter for CY22050KF, CY25150KF, CY25200KF | N/A |
| CY3696 | Socket adapter for CY2077FS (SOIC) | N/A |
| CY3697 | Socket adapter for CY2077FZ (TSSOP) | N/A |
| CY3698 | Socket adapter for CY22392F, CY22393F, CY22394F, CY22395F | N/A |
| CY3699 | Socket adapter for CY22381F | N/A |
| CY3724 | Socket adapter for CY25701FLX | N/A |

Notes

2. The legacy configuration software for this device is CyberClocks Online.
3. The legacy configuration software for this device is CyClocksRT, which is an application embedded within CyberClocks software.
4. The legacy configuration software for this device is CyClocks, which is an application embedded within CyberClocks software.

Document History Page

| Document Title: CY3672-USB, Clock Programming Kit Document Number: 38-07409 | | | | |
|--|---------|-----------------|-----------------|--|
| Rev. | ECN | Orig. of Change | Submission Date | Description of Change |
| ** | 114456 | CKN | 07/24/02 | New data sheet |
| *A | 118435 | CKN | 12/05/02 | Updated CY3672-USB Kit Contents (Removed CD containing CyClocksRT software, CY3672 programmer interface software, data sheets and added Quick Start Guide). Updated Functional Description (To include information on new software CyberClocks). |
| *B | 127454 | RGL | 09/05/03 | Added Quick Start Guide . Updated Socket Adapters (Added adapter part numbers CY3690, CY3691, CY3692, CY3693 and CY3694 and its details in Table 1). |
| *C | 223822 | RGL | 05/11/04 | Updated Quick Start Guide (Added a Note containing registration process for the CyberClocks Online). Updated Ordering Information (Fixed to match the DevMaster). |
| *D | 270030 | RGL | 10/11/04 | Updated Features Updated Socket Adapters (Updated the details of adapter part number CY3695 and added adapter part number CY3713 and its details in Table 1). Updated Ordering Information . |
| *E | 390555 | RGL | 08/25/05 | Updated Socket Adapters (Added adapter part numbers CY3617, CY3618 and their details in Table 1). Updated Ordering Information (Added the ordering code CY3672-USB and its details). |
| *F | 404668 | KVM | 11/03/05 | Updated Socket Adapters (Added adapter part number CY3724 and its details in Table 1). |
| *G | 2897245 | KVM | 03/22/10 | Updated title to read "Clock Programming Kit". Removed references of parallel port interface and cable across the document. Updated Ordering Information (Removed the ordering code CY3672 and CY3672-PRG and their details). Updated Socket Adapters (Updated Adapter Label column for the adapter part numbers CY3690 and CY3691 (swapped Adapter Labels CY3672ADP008 and CY3672ADP009), removed adapter part numbers CY3693, CY3694, CY3613, CY3617, CY3618 and their details, updated Configuration Software column as CyClockWizard for all adapter part numbers in Table 1). |
| *H | 3287649 | BASH | 06/20/11 | Updated Ordering Information (Updated Description column for the ordering codes CY3690 and CY3691). |
| *I | 3532571 | PURU | 02/22/2012 | Updated Socket Adapters (Updated Programmable Device column in Table 1 for the adapter part numbers CY3690 and CY3691). Updated Ordering Information (Updated Description column for the ordering codes CY3690 and CY3691). Updated in new template. |

Sales, Solutions, and Legal Information

Worldwide Sales and Design Support

Cypress maintains a worldwide network of offices, solution centers, manufacturer's representatives, and distributors. To find the office closest to you, visit us at [Cypress Locations](#).

Products

| | |
|--|--|
| Automotive | cypress.com/go/automotive |
| Clocks & Buffers | cypress.com/go/clocks |
| Interface | cypress.com/go/interface |
| Lighting & Power Control | cypress.com/go/powerpsoc cypress.com/go/plc |
| Memory | cypress.com/go/memory |
| Optical & Image Sensing | cypress.com/go/image |
| PSoC | cypress.com/go/psoc |
| Touch Sensing | cypress.com/go/touch |
| USB Controllers | cypress.com/go/USB |
| Wireless/RF | cypress.com/go/wireless |

PSoC Solutions

psoc.cypress.com/solutions
PSoC 1 | PSoC 3 | PSoC 5

© Cypress Semiconductor Corporation, 2002-2012. The information contained herein is subject to change without notice. Cypress Semiconductor Corporation assumes no responsibility for the use of any circuitry other than circuitry embodied in a Cypress product. Nor does it convey or imply any license under patent or other rights. Cypress products are not warranted nor intended to be used for medical, life support, life saving, critical control or safety applications, unless pursuant to an express written agreement with Cypress. Furthermore, Cypress does not authorize its products for use as critical components in life-support systems where a malfunction or failure may reasonably be expected to result in significant injury to the user. The inclusion of Cypress products in life-support systems application implies that the manufacturer assumes all risk of such use and in doing so indemnifies Cypress against all charges.

Any Source Code (software and/or firmware) is owned by Cypress Semiconductor Corporation (Cypress) and is protected by and subject to worldwide patent protection (United States and foreign), United States copyright laws and international treaty provisions. Cypress hereby grants to licensee a personal, non-exclusive, non-transferable license to copy, use, modify, create derivative works of, and compile the Cypress Source Code and derivative works for the sole purpose of creating custom software and or firmware in support of licensee product to be used only in conjunction with a Cypress integrated circuit as specified in the applicable agreement. Any reproduction, modification, translation, compilation, or representation of this Source Code except as specified above is prohibited without the express written permission of Cypress.

Disclaimer: CYPRESS MAKES NO WARRANTY OF ANY KIND, EXPRESS OR IMPLIED, WITH REGARD TO THIS MATERIAL, INCLUDING, BUT NOT LIMITED TO, THE IMPLIED WARRANTIES OF MERCHANTABILITY AND FITNESS FOR A PARTICULAR PURPOSE. Cypress reserves the right to make changes without further notice to the materials described herein. Cypress does not assume any liability arising out of the application or use of any product or circuit described herein. Cypress does not authorize its products for use as critical components in life-support systems where a malfunction or failure may reasonably be expected to result in significant injury to the user. The inclusion of Cypress' product in a life-support systems application implies that the manufacturer assumes all risk of such use and in doing so indemnifies Cypress against all charges.

Use may be limited by and subject to the applicable Cypress software license agreement.