



Chipsmall Limited consists of a professional team with an average of over 10 year of expertise in the distribution of electronic components. Based in Hongkong, we have already established firm and mutual-benefit business relationships with customers from,Europe,America and south Asia,supplying obsolete and hard-to-find components to meet their specific needs.

With the principle of “Quality Parts,Customers Priority,Honest Operation,and Considerate Service”,our business mainly focus on the distribution of electronic components. Line cards we deal with include Microchip,ALPS,ROHM,Xilinx,Pulse,ON,Everlight and Freescale. Main products comprise IC,Modules,Potentiometer,IC Socket,Relay,Connector.Our parts cover such applications as commercial,industrial, and automotives areas.

We are looking forward to setting up business relationship with you and hope to provide you with the best service and solution. Let us make a better world for our industry!



Contact us

Tel: +86-755-8981 8866 Fax: +86-755-8427 6832

Email & Skype: info@chipsmall.com Web: www.chipsmall.com

Address: A1208, Overseas Decoration Building, #122 Zhenhua RD., Futian, Shenzhen, China



1



Remove the CY4672 PRO LP Reference Design Kit bridge dongle, keyboard, and mouse from the package.

2



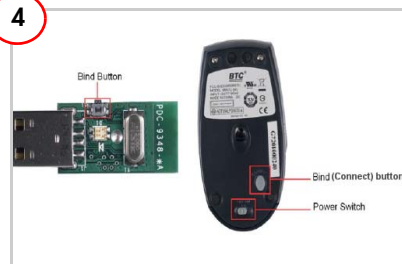
Connect the bridge dongle to the PC. The bridge enumerates as a human interface device (HID).

3



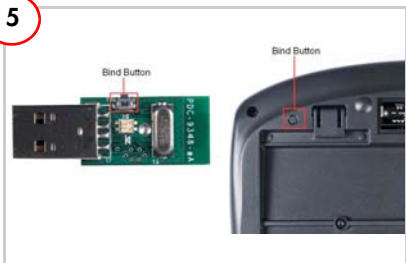
Power the mouse and keyboard with two AA batteries each.

4



Turn on the mouse. Press the bind button on the bridge; the red LED blinks. Press the bind button on the mouse to bind it with the bridge.

5



Press the bind button on the bridge; the red LED blinks. Press the bind button on the keyboard to bind it with the bridge. The mouse and keyboard work smoothly with the PC.

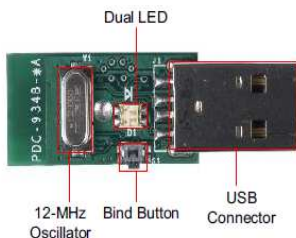
6



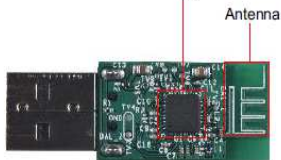
Insert the CY4672 kit CD. Install PSoC Designer and PSoC Programmer.

CY4672 ProC LP Reference Design Kit Details

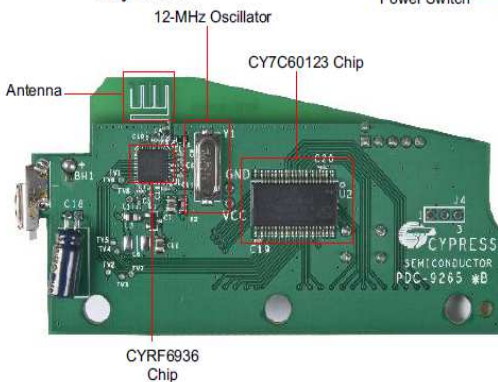
Bridge Dongle



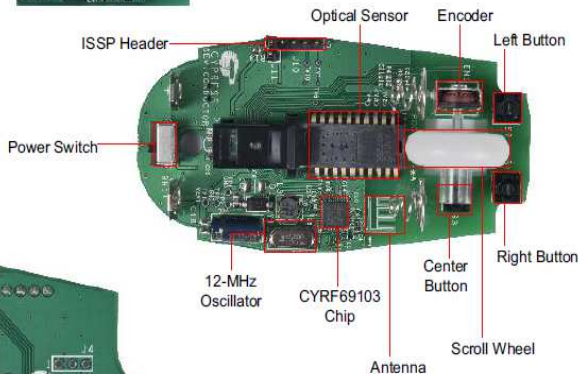
CYRF69213 Chip



Keyboard



Mouse



For the latest information about this kit, visit
<http://www.cypress.com/go/CY4672>

