



Chipsmall Limited consists of a professional team with an average of over 10 year of expertise in the distribution of electronic components. Based in Hongkong, we have already established firm and mutual-benefit business relationships with customers from,Europe,America and south Asia,supplying obsolete and hard-to-find components to meet their specific needs.

With the principle of "Quality Parts,Customers Priority,Honest Operation,and Considerate Service",our business mainly focus on the distribution of electronic components. Line cards we deal with include Microchip,ALPS,ROHM,Xilinx,Pulse,ON,Everlight and Freescale. Main products comprise IC,Modules,Potentiometer,IC Socket,Relay,Connector.Our parts cover such applications as commercial,industrial, and automotives areas.

We are looking forward to setting up business relationship with you and hope to provide you with the best service and solution. Let us make a better world for our industry!



## Contact us

Tel: +86-755-8981 8866 Fax: +86-755-8427 6832

Email & Skype: info@chipsmall.com Web: www.chipsmall.com

Address: A1208, Overseas Decoration Building, #122 Zhenhua RD., Futian, Shenzhen, China

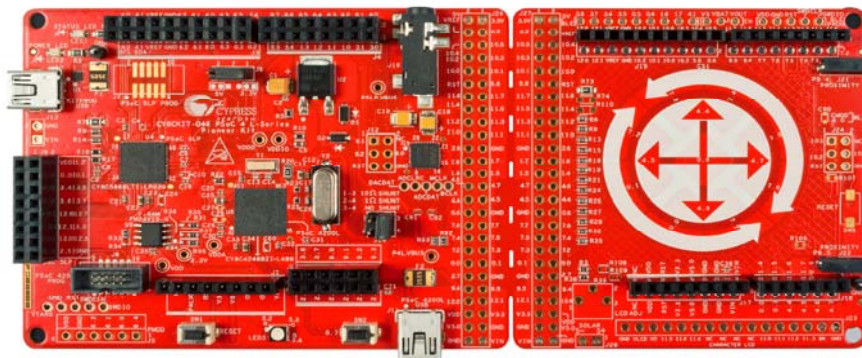




## CY8CKIT-046 PSoC® 4 L-Series Pioneer Kit

Last Updated: Jan 12, 2016

Version: \*\*



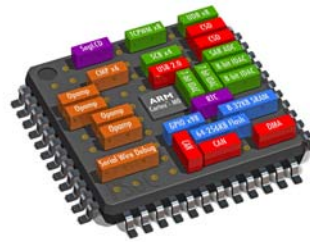
The PSoC® 4 L-Series Pioneer Kit is a low-cost hardware and software platform to enable design and debug of the PSoC 4200L device.

Coming soon!

### Featuring PSoC 4200L Device

The PSoC 4 L-Series Pioneer Kit features the PSoC 4200L device - industry's most flexible 32-bit ARM® Cortex®-M0 solution.

The PSoC 4200L device is a member of the PSoC 4 L-Series device family with up to 256KB flash, 98 GPIOs, 13 programmable analog blocks, 20 programmable digital blocks, dual CapSense® hardware blocks, full-speed USB, DMA and CAN.



### Industry's Best and Simplest CapSense

The PSoC 4 L-Series Pioneer Kit features a 13-element CapSense Gesture Pad and two CapSense proximity headers that allows you to quickly implement and evaluate touch-based and proximity gestures.

The dual CapSense hardware blocks inside the PSoC 4200L device enables you to scan the CapSense Gesture Pad and the proximity sensors simultaneously.



### Industry's First Dual-Arduino Compatible Development Platform

The PSoC 4 L-Series Pioneer Kit is the industry's first development platform that features footprint to connect two Arduino Uno compatible shields side-by-side.

This hardware flexibility allows you to use two user interface shields or two shields sharing the same communication protocols in the same design.





## Snap-away Arduino Shield

The PSoC 4 L-Series Pioneer Kit lets you snap-off the extended shield board and use it as an Arduino Shield with any Arduino Uno compatible development kit. The snapped-off shield features a 13-element CapSense Gesture Pad, two proximity headers, footprint for EZ-BLE™ PRoC™ module, Energy Harvesting Power Management IC (PMIC), Serial NOR flash and  $\mu$ SD card socket.

If you want to use the snapped-off shield back with the PSoC 4 L-Series Pioneer Kit, you can plug it into the Arduino header on the main board or into the 52-pin header on the edge of the main board, enabling you to use the kit with full features, yet again.



## Flexible Prototyping

The PSoC 4 L-Series Pioneer Kit features a wide variety of peripherals such as full-speed USB device, stereo codec, 1Mb F-RAM, an RGB LED and footprints for EZ-BLE PRoC module, Energy Harvesting Power Management IC (PMIC), Serial NOR flash,  $\mu$ SD card socket and a coin cell battery.

Additionally, the kit also includes the Cypress KitProg, an on-board programmer and debugger for the PSoC devices.



### Kit Contents:

PSoC 4 L-Series pioneer board

USB standard-A to Mini-B cable

Four jumper wires (4 inches each)

Two proximity sensor wires (5 inches each)

Stereo audio earphone with microphone

Quick Start Guide