



Chipsmall Limited consists of a professional team with an average of over 10 year of expertise in the distribution of electronic components. Based in Hongkong, we have already established firm and mutual-benefit business relationships with customers from,Europe,America and south Asia,supplying obsolete and hard-to-find components to meet their specific needs.

With the principle of "Quality Parts,Customers Priority,Honest Operation,and Considerate Service",our business mainly focus on the distribution of electronic components. Line cards we deal with include Microchip,ALPS,ROHM,Xilinx,Pulse,ON,Everlight and Freescale. Main products comprise IC,Modules,Potentiometer,IC Socket,Relay,Connector.Our parts cover such applications as commercial,industrial, and automotives areas.

We are looking forward to setting up business relationship with you and hope to provide you with the best service and solution. Let us make a better world for our industry!



Contact us

Tel: +86-755-8981 8866 Fax: +86-755-8427 6832

Email & Skype: info@chipsmall.com Web: www.chipsmall.com

Address: A1208, Overseas Decoration Building, #122 Zhenhua RD., Futian, Shenzhen, China



EZ-BLE™ MODULE ARDUINO EVALUATION BOARD CYBLE-013025-EVAL



The EZ-BLE Module Arduino Evaluation Board (CYBLE-013025-EVAL) enables you to evaluate and develop applications on the CYBLE-0130XX-00 WICED Modules (CYBLE-013025-00 and CYBLE-013030-00). CYBLE-013025-EVAL can be used as a standalone evaluation kit or can be combined with Arduino compatible shields.

The CYBLE-0130XX-00 WICED Modules are fully integrated, fully certified, 14.5 mm x 19.2 mm x 2.25 mm, programmable, Bluetooth® Smart modules designed to reduce your time-to-market.

For more information, visit:

www.cypress.com/EZ-BLEModule - EZ-BLE Module home pages

www.cypress.com/EZ-Serial - EZ-Serial BLE Firmware Platform page

www.cypress.com/WICED - WICED Platform page

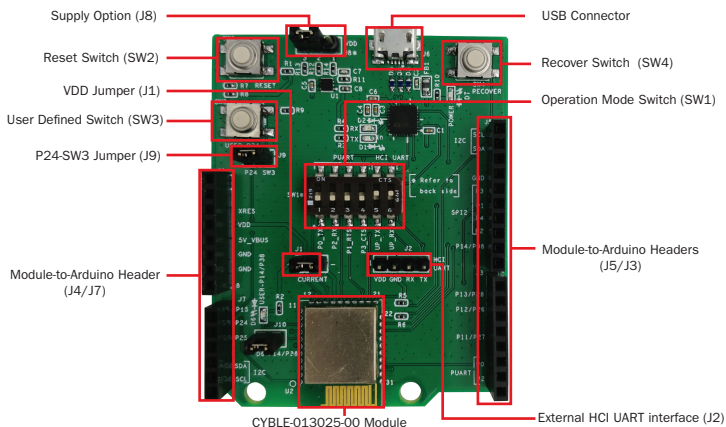


Figure 1: CYBLE-013025-EVAL Top View

To use the CYBLE-013025-EVAL,

- 1) Configure the evaluation board headers/switches to the desired settings
- 2) Connect the evaluation board to a PC via a USB cable
- 3) Open the WICED Smart SDK, develop your application, program and test

The Arduino compatible headers (J3/J4/J5/J7) are optional connections, which provide additional I/O connections to the module, and allows for Arduino Compatible shields to be used during development.

EZ-BLE™ MODULE ARDUINO EVALUATION BOARD

CYBLE-013025-EVAL

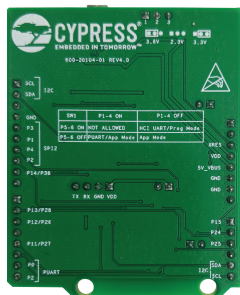


Figure 2: CYBLE-013025-EVAL Bottom View

SW1: Jumper configuration for UART connections as shown in the below table:

SW1 Position	Position 1/2/3/4 = ON	Position 1/2/3/4 = OFF
Position 5 and 6 = ON	Do Not Use (HCI and PUART compete)	HCI mode Reprogramming or testing
Position 5 and 6 = OFF	PUART Application Mode PUART connected to host	General Application Mode PUART disconnected from host

SW2: Reset Switch routed to the XRES connection on the module.

SW3: User-defined Switch routed to the P24 connection on the module.

SW4: Recover Switch routed to the SDA connection on the module.

J1: Used for power supply current measurement.

J2: Connection for external interface for direct HCI UART communication.

J3/J4/J5/J7: Arduino-compatible headers used with an Arduino-compatible shield.

J8: Configures the VDD voltage input to the module as shown in the below table:

J8 Jumper Configuration	VDD Voltage Level
Short 1 & 2	3.6V
Short 2 & 3	3.3V
No Jumper	2.3V

J9: Connects the P24 pad on the module to SW3.

J10: Connects the P14/38 pad on the module to LED D6.

The CYBLE-0130XX-00 WICED Modules are qualified for the Bluetooth 4.1 specification and are certified for the 2.4 GHz unlicensed frequency range in USA (FCC), Canada (ISED), Europe (CE) and Japan (MIC).

Visit www.cypress.com/support for technical support.