



Chipsmall Limited consists of a professional team with an average of over 10 year of expertise in the distribution of electronic components. Based in Hongkong, we have already established firm and mutual-benefit business relationships with customers from,Europe,America and south Asia,supplying obsolete and hard-to-find components to meet their specific needs.

With the principle of “Quality Parts,Customers Priority,Honest Operation,and Considerate Service”,our business mainly focus on the distribution of electronic components. Line cards we deal with include Microchip,ALPS,ROHM,Xilinx,Pulse,ON,Everlight and Freescale. Main products comprise IC,Modules,Potentiometer,IC Socket,Relay,Connector.Our parts cover such applications as commercial,industrial, and automotives areas.

We are looking forward to setting up business relationship with you and hope to provide you with the best service and solution. Let us make a better world for our industry!



## Contact us

Tel: +86-755-8981 8866 Fax: +86-755-8427 6832

Email & Skype: info@chipsmall.com Web: www.chipsmall.com

Address: A1208, Overseas Decoration Building, #122 Zhenhua RD., Futian, Shenzhen, China





CYUSBS234

# USB-Serial Development Kit Guide

Doc. # 001-86632 Rev. \*\*

Cypress Semiconductor  
198 Champion Court  
San Jose, CA 95134-1709  
Phone (USA): 800.858.1810  
Phone (Intl): +1.408.943.2600  
<http://www.cypress.com>



## Copyrights

© Cypress Semiconductor Corporation, 2013. The information contained herein is subject to change without notice. Cypress Semiconductor Corporation assumes no responsibility for the use of any circuitry other than circuitry embodied in a Cypress product. Nor does it convey or imply any license under patent or other rights. Cypress products are not warranted nor intended to be used for medical, life support, life saving, critical control or safety applications, unless pursuant to an express written agreement with Cypress. Furthermore, Cypress does not authorize its products for use as critical components in life-support systems where a malfunction or failure may reasonably be expected to result in significant injury to the user. The inclusion of Cypress products in life-support systems application implies that the manufacturer assumes all risk of such use and in doing so indemnifies Cypress against all charges.

Any Source Code (software and/or firmware) is owned by Cypress Semiconductor Corporation (Cypress) and is protected by and subject to worldwide patent protection (United States and foreign), United States copyright laws and international treaty provisions. Cypress hereby grants to licensee a personal, non-exclusive, non-transferable license to copy, use, modify, create derivative works of, and compile the Cypress Source Code and derivative works for the sole purpose of creating custom software and or firmware in support of licensee product to be used only in conjunction with a Cypress integrated circuit as specified in the applicable agreement. Any reproduction, modification, translation, compilation, or representation of this Source Code except as specified above is prohibited without the express written permission of Cypress.

Disclaimer: CYPRESS MAKES NO WARRANTY OF ANY KIND, EXPRESS OR IMPLIED, WITH REGARD TO THIS MATERIAL, INCLUDING, BUT NOT LIMITED TO, THE IMPLIED WARRANTIES OF MERCHANTABILITY AND FITNESS FOR A PARTICULAR PURPOSE. Cypress reserves the right to make changes without further notice to the materials described herein. Cypress does not assume any liability arising out of the application or use of any product or circuit described herein. Cypress does not authorize its products for use as critical components in life-support systems where a malfunction or failure may reasonably be expected to result in significant injury to the user. The inclusion of Cypress' product in a life-support systems application implies that the manufacturer assumes all risk of such use and in doing so indemnifies Cypress against all charges.

Use may be limited by and subject to the applicable Cypress software license agreement.

CapSense<sup>®</sup> is a registered trademark of Cypress Semiconductor Corp. All other trademarks or registered trademarks referenced herein are property of the respective corporations.

## Flash Code Protection

Cypress products meet the specifications contained in their particular Cypress PSoC Data Sheets. Cypress believes that its family of PSoC products is one of the most secure families of its kind on the market today, regardless of how they are used. There may be methods, unknown to Cypress, that can breach the code protection features. Any of these methods, to our knowledge, would be dishonest and possibly illegal. Neither Cypress nor any other semiconductor manufacturer can guarantee the security of their code. Code protection does not mean that we are guaranteeing the product as 'unbreakable'.

Cypress is willing to work with the customer who is concerned about the integrity of their code. Code protection is constantly evolving. We at Cypress are committed to continuously improving the code protection features of our products.

# Contents



<b>Safety Information</b>	<b>5</b>
<b>1. Introduction</b>	<b>7</b>
1.1 Kit Contents .....	7
1.2 Getting Started.....	8
1.3 Additional Learning Resources .....	8
1.4 Technical Support.....	8
1.5 Document History .....	9
1.6 Documentation Conventions .....	9
1.7 Abbreviations .....	10
<b>2. Software Installation</b>	<b>11</b>
2.1 CYUSBS234 DVK Software .....	11
2.2 Install Hardware.....	14
2.3 Uninstall Software .....	14
<b>3. Kit Operation</b>	<b>15</b>
3.1 Default Switch and Jumper Settings .....	16
3.2 USB-Serial Enumeration.....	17
3.3 USB-Serial Configuration on Windows OS.....	19
3.3.1 Connecting CYUSBS234 DVK to Cypress USB-Serial Configuration Utility..	19
3.3.2 USB Configuration .....	21
3.3.3 UART Configuration .....	25
3.3.3.1 Test Procedure for CYUSBS234 DVK Configured as UART .....	28
3.3.3.2 Throughput Determination .....	30
3.3.4 I2C Configuration .....	32
3.3.4.1 Test Procedure for CYUSBS234 DVK Configured as I2C .....	35
3.3.5 SPI Configuration .....	38
3.3.5.1 Test Procedure for CYUSBS234 DVK Configured as SPI.....	42
3.3.6 CapSense Configuration .....	45
3.3.6.1 Test Procedure for CYUSBS234 DVK Configured for CapSense ...	49
3.3.7 Battery Charger Detection (BCD) Configuration .....	52
3.3.7.1 Test Procedure for CYUSBS234 DVK Configured for BCD.....	54
3.3.8 CYUSBS234 DVK Restore Default Configuration Settings.....	56
<b>4. Hardware</b>	<b>59</b>
4.1 Board Details .....	59
4.2 Theory of Operation.....	61
4.3 Functional Description .....	62
4.3.1 Features .....	62
4.3.2 Power-Supply System.....	63
4.3.3 LEDs .....	64

4.3.4	USB Connector .....	65
4.3.5	Serial Communication Block (SCB) .....	66
4.3.5.1	SCB Jumpers.....	66
4.3.5.2	RS-232 Interface.....	67
4.3.5.3	I2C Interface .....	69
4.3.5.4	SPI Interface .....	69
4.3.5.5	GPIO Header .....	70
4.3.6	CapSense Button .....	70
4.3.7	Battery Charger Detection.....	71
4.3.8	Reset Switch .....	72
<b>5.</b>	<b>Additional Information</b> .....	<b>74</b>
5.1	Using USB-Serial on a Mac OS.....	74
5.1.1	Using CYUSBS234 DVK in Communications Device Class (CDC) Mode .....	74
5.1.2	Using the CYUSBS234 DVK board in Vendor Mode .....	75
<b>A.</b>	<b>Appendix</b> .....	<b>76</b>
A.1	Schematic .....	76
A.2	CY7C65211 USB-Serial Design Guidelines .....	81
A.3	Troubleshooting Guide .....	84
A.4	Bill of Materials (BoM) .....	86

# Safety Information



## Regulatory Compliance

The CYUSBS234 USB-Serial Development kit is intended for use as a development platform for hardware or software in a laboratory environment. The board is an open-system design, which does not include a shielded enclosure. This kit may cause interference to other electrical or electronic devices in close proximity. In a domestic environment, this product may cause radio interference. In such cases, take adequate preventive measures. Also, do not use this board near any medical equipment or RF devices.

Attaching additional wiring to this product or modifying the product operation from the factory default may affect its performance and cause interference with other apparatus in the immediate vicinity. If such interference is detected, suitable mitigating measures must be taken.



The CYUSBS234 contains electrostatic discharge (ESD) sensitive devices. Electrostatic charges readily accumulate on the human body and any equipment, and can discharge without detection. Permanent damage may occur on devices subjected to high-energy discharges. Cypress recommends proper ESD precautions to avoid performance degradation or loss of functionality. Store unused CYUSBS234 boards in the protective shipping package.



### End-of-Life / Product Recycling

This kit has an end-of-life cycle after five years from the year of manufacturing mentioned on the back of the box. Contact your nearest recycler for discarding the kit.

## General Safety Instructions

### ESD Protection

ESD can damage boards and associated components. Cypress recommends that you perform procedures only at an ESD workstation. If an ESD workstation is not available, use appropriate ESD protection by wearing an antistatic wrist strap attached to the chassis ground (any unpainted metal surface) on the board when handling parts.

### Handling Boards

CYUSBS234 boards are sensitive to ESD. Hold the board only by its edges. After removing the board from its box, place it on a grounded, static-free surface. Use a conductive foam pad if available. Do not slide the board over any surface.



### Using Batteries

Use only the recommended rechargeable Li-ion battery. Check the polarity of the battery connector before connecting to the board.

# 1. Introduction



Thank you for your interest in the CYUSBS234 USB-Serial Development Kit (DVK). This DVK is designed as an easy-to-use kit, showcasing the unique features of Cypress's CY7C65211 USB-Serial bridge controller. This device includes CapSense<sup>®</sup>, Cypress's leading capacitive touch-sensing technology, and the Battery Charger Detection (BCD) feature, which is compliant with the USB Implementers Forum (USB-IF) Battery Charging Specification. This kit includes EEPROMs to demonstrate I2C and SPI, an RS-232 line-driver for UART, a CapSense touch button, and a Lithium ion (Li+) battery charger circuit.

CY7C65211 is the first full-speed USB-Serial bridge controller that offers a single-channel configurable serial interface (UART/I2C/SPI). The controller also features BCD and capacitive touch sensing at low suspend-state currents of 5  $\mu$ A. The controller is offered in a 4x4-mm, 24-pin QFN package to meet the dimensional requirements of portable devices.

## 1.1 Kit Contents

The CYUSBS234 kit contains the following items:

- CYUSBS234 DVK board
- Quick start guide
- USB standard-A to micro-B cable
- Jumper wires
- Extra jumpers
- 5-V power supply adapter
- CY7C65211-24LTXI sample silicon chips



Figure 1-1. Kit Contents



Inspect the contents of the kit; if you find any part missing, contact your nearest Cypress sales office for assistance or go to [www.cypress.com/go/support](http://www.cypress.com/go/support).

## 1.2 Getting Started

This kit guide helps you get acquainted with the CYUSBS234 DVK. The [Software Installation chapter on page 11](#) provides step-by-step instructions to install the CYUSBS234 DVK software. The [Kit Operation chapter on page 15](#) describes how the kit operates, and explains how to configure the CY7C65211 USB-Serial bridge controller using the Cypress USB-Serial Configuration Utility. The [Hardware chapter on page 59](#) discusses the kit hardware. The [Additional Information chapter on page 74](#) explains how to run the CYUSBS234 kit on a Mac OS. The [Appendix chapter on page 76](#) provides the schematics, layout, bill of materials (BoM), troubleshooting guidelines, and board layout design guidelines for the CY7C65211 USB-Serial bridge controller.

## 1.3 Additional Learning Resources

Visit the USB-Serial web page, [www.cypress.com/go/usbserial](http://www.cypress.com/go/usbserial) for additional learning resources in the form of datasheets and application notes.

## 1.4 Technical Support

For assistance, go to [www.cypress.com/go/support](http://www.cypress.com/go/support) or contact our customer support at +1 (800) 541-4736 Ext. 8 (in the USA) or +1 (408) 943-2600 Ext. 8 (International).

## 1.5 Document History

Revision	PDF Creation Date	Origin of Change	Description of Change
**	09/12/2013	MVTA	Initial version of kit guide.

## 1.6 Documentation Conventions

Table 1-1. Document Conventions for Guides

Convention	Usage
Courier New	Displays file locations, user entered text, and source code: C:\...cd\icc\
<i>Italics</i>	Displays file names and reference documentation: For example, <i>CYUSBS234 USB DVK.cysusb</i>
[ <b>Bracketed, Bold</b> ]	Displays keyboard commands in procedures: [ <b>Enter</b> ] or [ <b>Ctrl</b> ] [ <b>C</b> ]
File > Open	Represents menu paths: File > Open > New Project
<b>Bold</b>	Displays commands, menu paths, and icon names in procedures: Click the <b>File</b> icon and then click <b>Open</b> .
Times New Roman	Displays an equation: $2 + 2 = 4$
Text in gray boxes	Describes cautions or unique functionality of the product.

## 1.7 Abbreviations

The following table lists the abbreviations used in this kit guide.

Abbreviation	Definition
BCD	battery charger detection
CDC	communications device class
CDP	charging downstream port
CPHA	clock phase
CPOL	clock polarity
CTS	clear to send
DCD	data carrier detect
DCP	dedicated charging port
DSR	data set ready
DTR	data terminal ready
DVK	development kit
ESD	electrostatic discharge
I2C	Inter Integrated Circuit
LDO	low drop-out
PC	personal computer
PID	product ID
RI	ring indicator
RTS	request to send
SCB	serial communication block
SDP	standard downstream port
SPI	serial peripheral interface
SSN	slave select n
UART	universal asynchronous receiver transmitter
USB	universal serial bus
VID	vendor ID

## 2. Software Installation



### 2.1 CYUSBS234 DVK Software

Follow these steps to install the CYUSBS234 DVK software:

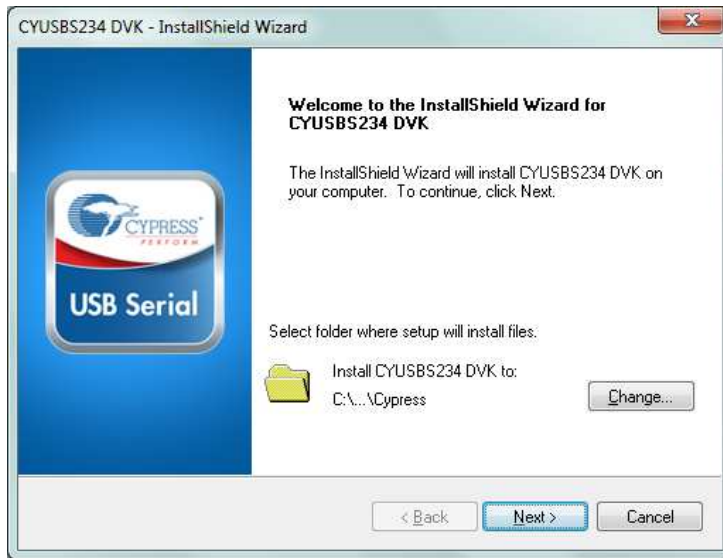
1. Download and install the CYUSBS234 DVK software from [www.cypress.com/go/CYUSBS234](http://www.cypress.com/go/CYUSBS234).  
The CYUSBS234 DVK software is available in two different installer formats for download:
  - a. **CYUSBS234 Kit ISO:** This file is a complete package, stored in a CD-ROM image format that can be used to create a CD, or extract using ISO extraction programs, such as WinZip or WinRAR. This file includes all the required software, utilities, drivers, hardware files, and user documents.
  - b. **CYUSBS234 Kit Setup:** This installation package contains the files related to the kit. It does not include the Windows installer, Microsoft .NET Framework, and Visual C++ redistributable packages. If these packages are not on your computer, the installer automatically downloads and installs them from the Internet.
2. Run **cyautorun.exe** to start the installation process.
3. Click **Install CYUSBS234 DVK** to start the installation, as shown in [Figure 2-1](#).

Figure 2-1. Kit Installer Startup Screen



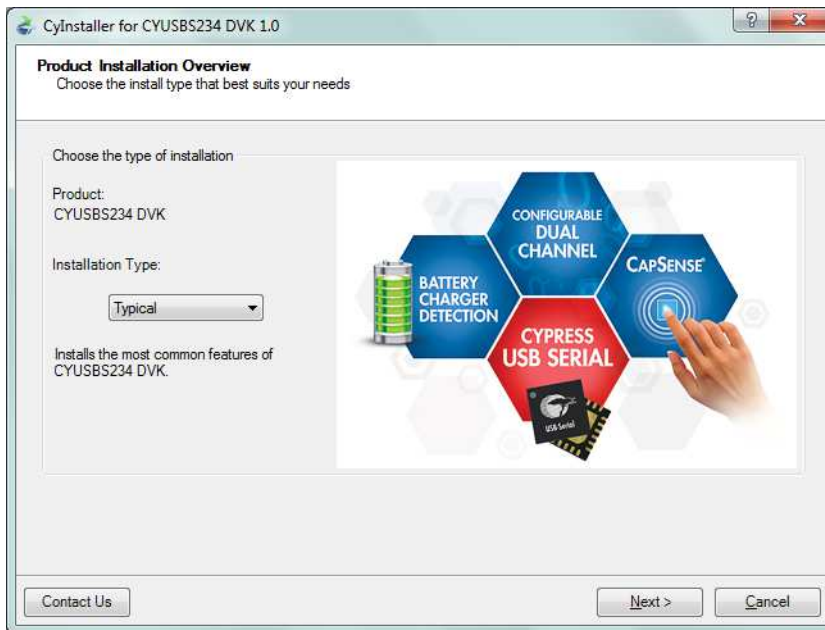
- Select the folder to install the CYUSBS234 DVK-related files. Choose the directory and click **Next**.

Figure 2-2. Default Path for DVK Installation



- The CYUSBS234 Kit ISO installer automatically installs the required software, if it is not present on your computer. The CYUSBS234 Kit Setup installer directs you to download the required software from the Internet.
- Select the installation type. The drop-down menu has two options: **Typical** (installs all the required features) and **Custom**. Click **Next** after you select the installation type.

Figure 2-3. Installation Type Options



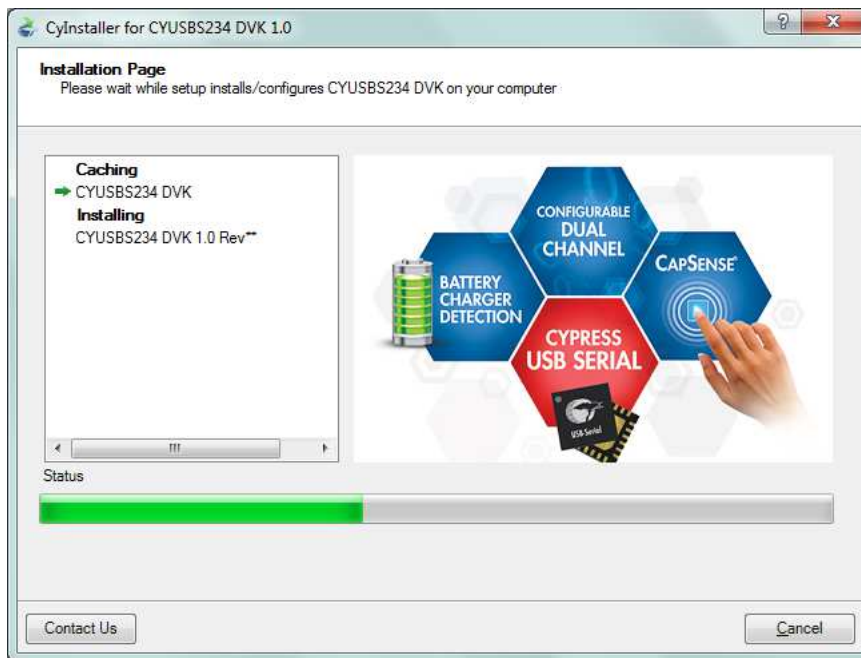
7. Read the Cypress License Agreement and make a selection based on the terms of the license agreement. Click **Next** to continue the installation.

Figure 2-4. Cypress License Agreement



8. When the installation begins, a list of packages appears on the installation page. A green check mark appears adjacent to every package after successful installation. If a message from Windows Security appears, accept the **Always trust software from Cypress Semiconductor** option and click **Install**.

Figure 2-5. Installation Page



9. Enter your contact information or select the **Continue Without Contact Information** check box. Click **Finish** to complete the CYUSBS234 DVK installation.

Figure 2-6. CYUSBS234 DVK Installation Complete



10. After the installation is complete, the kit contents are available at the following location:

<Install directory>\Cypress\CYUSBS234 DVK\1.0\

## 2.2 Install Hardware

This kit does not require any additional hardware installation.

## 2.3 Uninstall Software

You can uninstall the CYUSBS234 DVK software using one of the following methods:

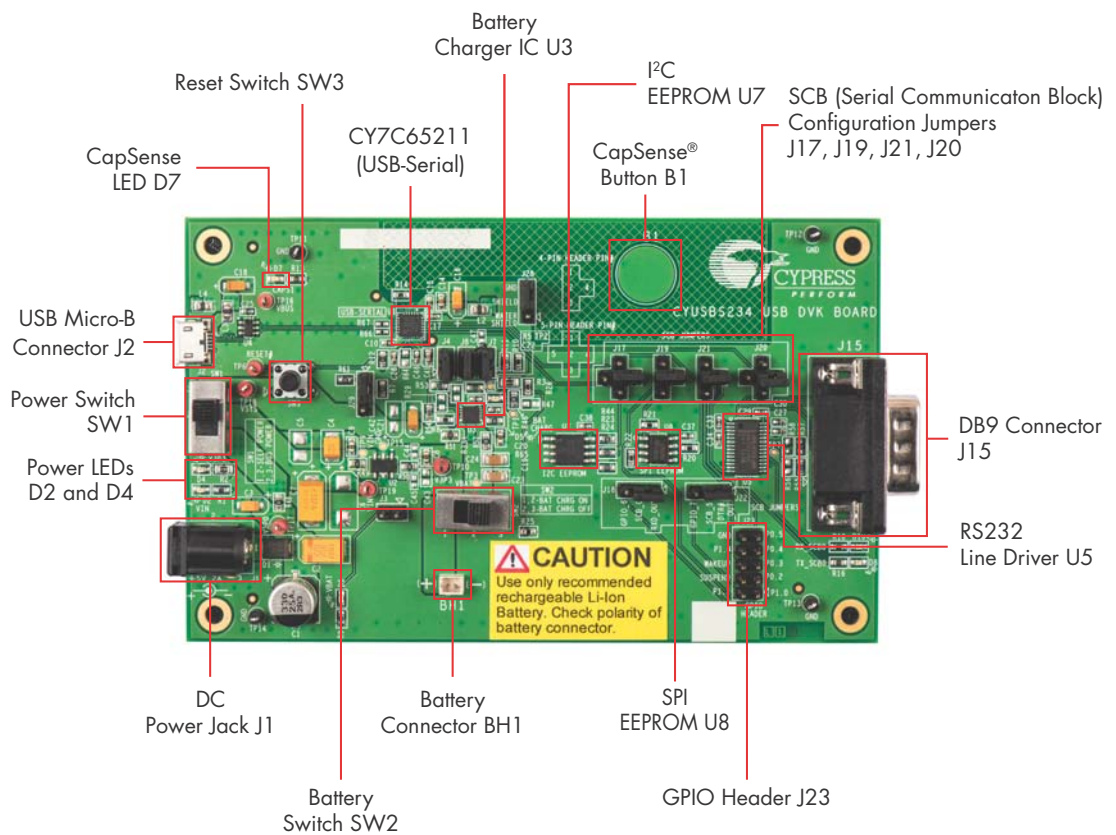
1. Go to **Start > All Programs > Cypress > Cypress Update Manager**; click the **Uninstall** button.
2. Go to **Start > Control Panel > Programs and Features**; select the program **CYUSBS234 DVK 1.0 Rev\*\*** from the list and click the **Uninstall/Change** button.

# 3. Kit Operation



The CYUSBS234 kit demonstrates the features of the CY7C65211 USB-Serial bridge controller. The CYUSBS234 DVK board is designed to work at 5 V. Figure 3-1 shows an image of the board with references to the onboard components.

Figure 3-1. CYUSBS234 DVK Board





### 3.1 Default Switch and Jumper Settings

The switches and jumpers on the CYUSBS234 DVK board are shipped with default settings for the USB bus-powered mode, serial interface in the UART mode, and CapSense functionality. The board is powered by the PC or the hub when it is connected by a USB standard-A to micro-B cable. [Figure 3-2](#) and [Table 3-1](#) provide the default configuration settings for the switches and jumpers.

Figure 3-2. Default Jumper and Switch Settings

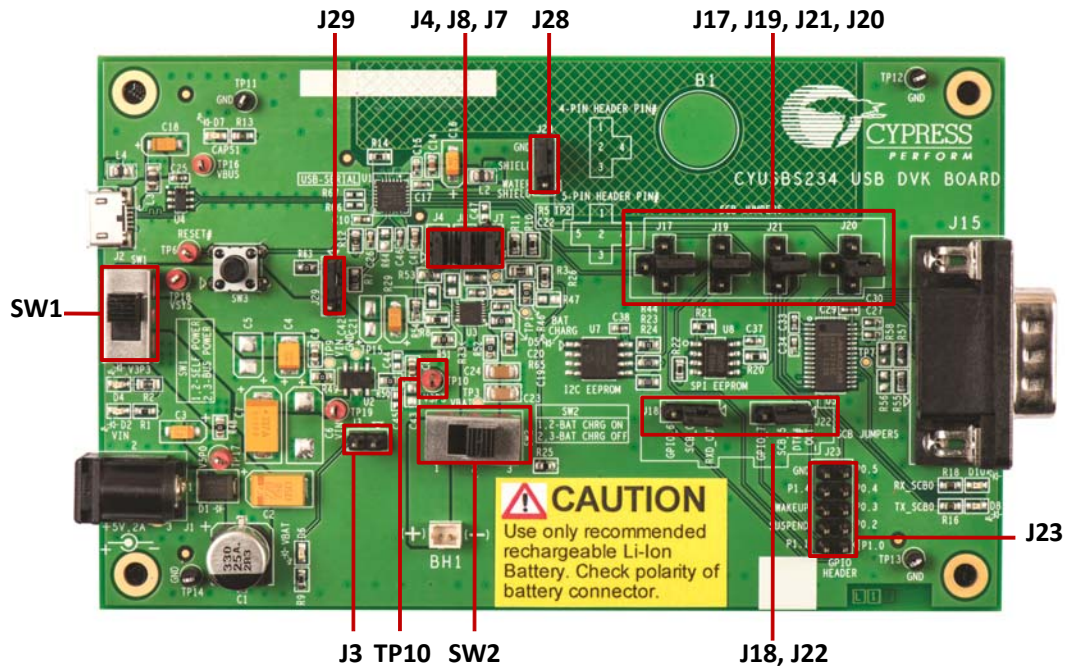


Table 3-1. Default Settings

Switch/Jumper	Position/Pins to be Shorted	Function
SW1	Position 2-3	Power supply selection switch set to bus-powered operation
SW2	Position 2-3	Battery power cut-off
J3	OPEN	VBAT LED
J4	1 and 2	Battery charge enable control pin #0 (BCD0)
J7	1 and 2	Bus detect
J8	1 and 2	Battery charge enable control pin #1 (BCD1)
J17	2 and 4	SCB configured for UART
J18	1 and 2	SCB configured for UART
J19	2 and 4	SCB configured for UART
J20	2 and 4	SCB configured for UART
J21	2 and 4	SCB configured for UART
J22	1 and 2	SCB configured for UART
J23	Open	GPIO header
J28	2 and 3	CapSense watershield feature disabled
J29	1 and 2	VBUS detection

### 3.2 USB-Serial Enumeration

The CYUSBS234 DVK board connects to the PC by a USB standard-A to micro-B cable. The board enumerates as a composite USB device.

Follow these steps for device enumeration:

1. To power up the board:
  - a. **Self-powered mode** - Set SW1 to position 1-2 and connect the 5-V power-supply adapter to J1 on the board.
  - b. **Bus-powered mode** - Set the switch SW1 to position 2-3.
2. Connect the USB standard-A to micro-B cable to the PC and J2 on the board.
3. The PC detects the board and the software driver is automatically bound to the USB device.

**Note** If the driver installation is unsuccessful, run *setup.exe* from the following folders with administrative privileges:

```
<Install directory>\Cypress\CYUSBS234 DVK\1.0\driver\cyusb3
```

```
<Install directory>\Cypress\CYUSBS234 DVK\1.0\driver\cyusbserial
```

For more information, refer to the Cypress USB-Serial Driver Installation Guide at the following location: <Install directory>\Cypress\CYUSBS234 DVK\1.0\documentation\

Figure 3-3. Install Location of cyusb3 Driver

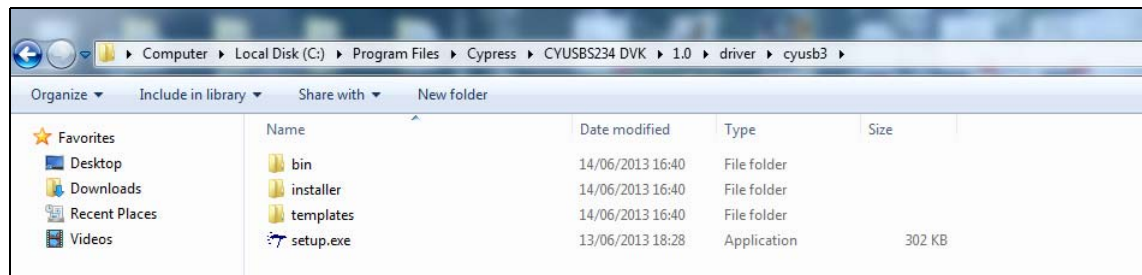
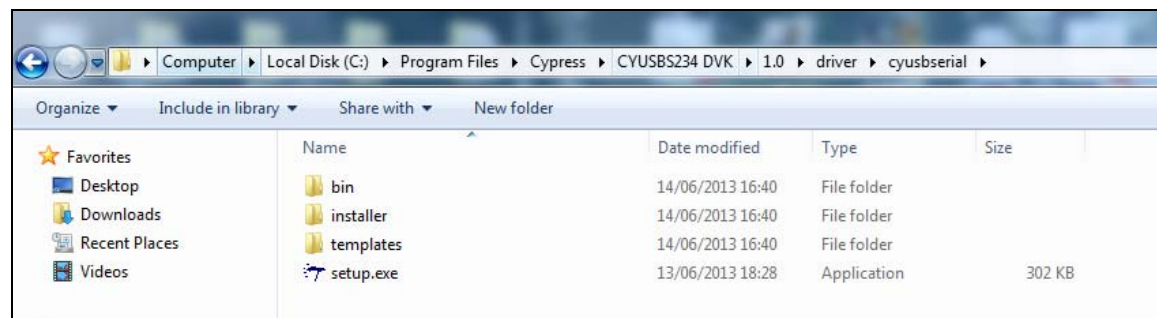


Figure 3-4. Install Location of cyusbserial Driver

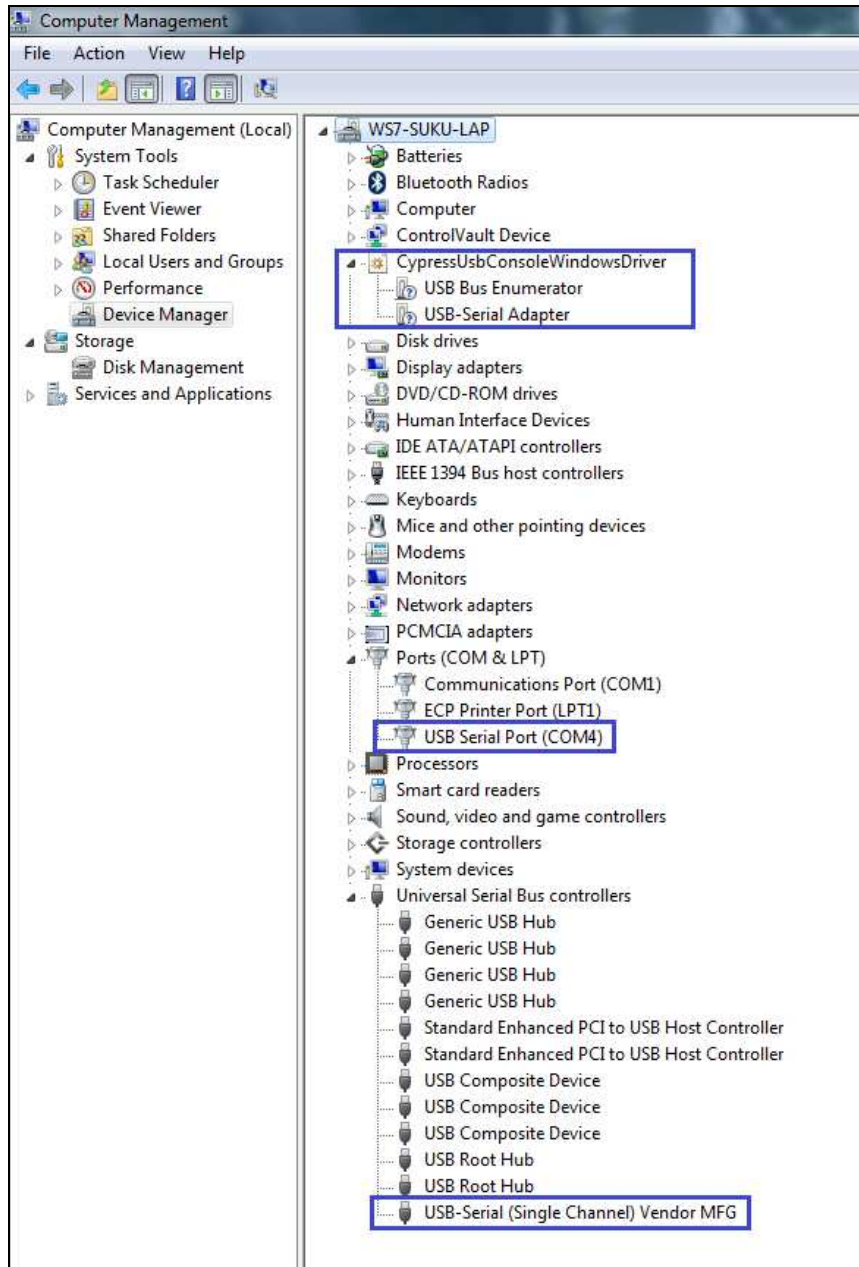


**Note** If a "Welcome to the Found New Hardware Wizard" message appears, select the **Yes, this time only** option and click **Next** to continue the installation.

4. When the software drivers are successfully bound, the board enumeration is complete. The board appears as a composite device in the device manager of the Windows OS (to launch the device manager in Windows 7, go to **Start > Control Panel > Device Manager**), as shown in [Figure 3-5](#).
  - USB-Serial Adapter under CypressUSBConsoleWindowsDriver

- USB Serial Port (COM#) under Ports (COM & LPT)
- USB-Serial (Single Channel) Vendor MFG under Universal Serial Bus controllers

Figure 3-5. CYUSBS234 DVK Enumeration as Single UART in Device Manager



### 3.3 USB-Serial Configuration on Windows OS

Using the Cypress USB-Serial Configuration Utility, you can configure the onboard CY7C65211 USB-Serial bridge controller as a USB-UART bridge, a USB-I2C bridge, or a USB-SPI bridge. You can also use this utility to configure the CY7C65211 device for CapSense and BCD functionality according to your requirements. The following sections provide detailed descriptions about the device features and configurations.

By default, the CYUSBS234 DVK board is configured for the USB-UART bridge and CapSense functionality.

#### 3.3.1 Connecting CYUSBS234 DVK to Cypress USB-Serial Configuration Utility

Follow these steps to connect the device using the Cypress USB-Serial Configuration Utility:

1. Connect the USB standard-A to micro-B cable to your PC and the J2 connector on the board.
2. Set switch SW1 to position 2-3 for bus-powered operation.
3. Run the configuration utility from **Start > All Programs > Cypress > CYUSBS234 DVK > USB Serial Configuration Utility**.

For a detailed description about the configuration utility, refer to the *USB-Serial Configuration Utility User Guide* at the following location:

<Install directory>\Cypress\CYUSBS234 DVK\1.0\documentation

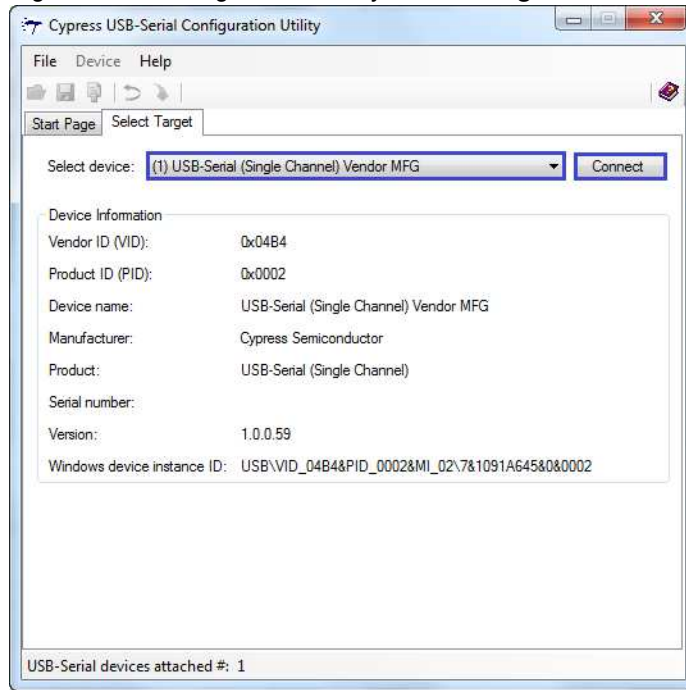
4. The following figure shows the startup screen of the Cypress USB-Serial Configuration Utility.

Figure 3-6. Configuration Utility Startup Screen



- Click the **Select Target** tab. Select the device from the drop-down menu and click **Connect**.

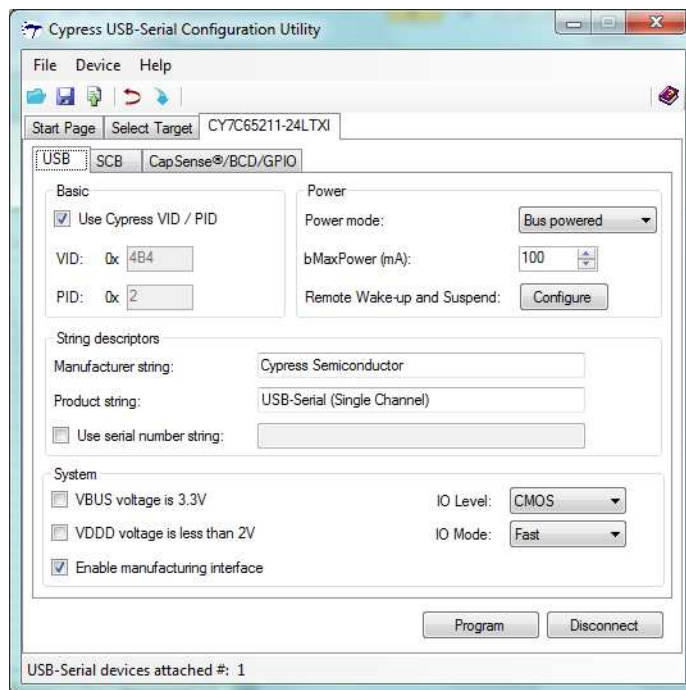
Figure 3-7. Configuration Utility **Select Target** Tab



**Note** The “version” number shown in [Figure 3-7](#) may vary depending upon the latest firmware version on the USB-Serial bridge controller.

- A new tab with the connected device's default settings appears, as shown in [Figure 3-8](#). This tab allows you to modify the device configuration settings, which you can program into the device.

Figure 3-8. Configuration Utility **USB** Tab

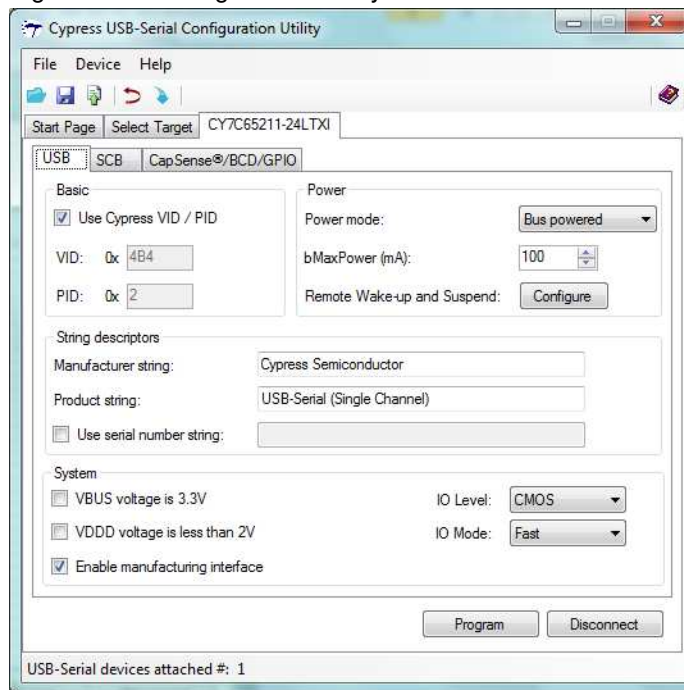


### 3.3.2 USB Configuration

The USB tab shows the current values of the board's configurable USB and system parameters. Follow these steps to view and modify the parameters for the USB configuration:

1. Follow steps 1 to 6 in the section [Connecting CYUSBS234 DVK to Cypress USB-Serial Configuration Utility on page 19](#) to connect the board to the Cypress USB-Serial Configuration Utility.
2. Click the **USB** tab.

Figure 3-9. Configuration Utility **USB** Tab



3. You can configure the following USB parameters using the Cypress USB-Serial Configuration Utility:
  - a. Vendor ID (VID)
  - b. Product ID (PID)
  - c. Power Mode (bus-powered or self-powered)
  - d. bMaxPower
  - e. Remote wake-up and Suspend
  - f. Manufacturer string
  - g. Product string
  - h. Serial number

■ **Vendor ID (VID) and Product ID (PID)**

Default value: 0x04B4 and 0x0002

A 2-byte vendor ID and product ID must be set in hexadecimal format. The VID and PID options cannot be zero or empty. The Cypress VID/PID is programmed by default. To change this, uncheck the **Use Cypress VID/PID** option. Enter the VID and press the **[Tab]** or **[Enter]** key to enable and enter the PID.

- **Power Mode**

Default value: Bus powered

The USB power mode can be set to either self-powered or bus-powered mode.

- **bMaXPower**

Default Value: 100 mA

The USB device current requirement value can be set in the range 1 to 500 mA in steps of 2 mA units in bus-powered mode and 0 mA to 500 mA in steps of 2 mA units in self-powered mode.

- **Remote Wake-up and Suspend**

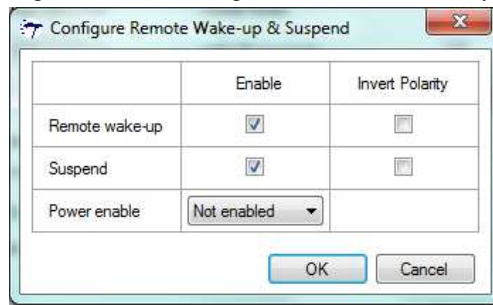
Default value for Remote wake-up: Enabled

Default value for Suspend: Enabled

Default value for Power Enable: Not enabled (for this board)

Click the **Configure** button (next to **Remote Wake-up and Suspend** in the USB tab) to enable or disable Remote wake-up and Suspend.

Figure 3-10. Configure Remote Wake-up and Suspend Window



**Configurable options:**

- Remote wake-up: When enabled, this option can be used to wake up the USB host from suspend state remotely from the attached device. By checking the **Invert Polarity** box, polarity of the wake-up pin can be inverted. J23.6 (GPIO header) on this board is a wake-up pin. To test the Remote wake-up functionality, follow this procedure:
  - a. Connect the Remote wake-up pin (J23.6) to GND (J23.10) using the provided jumper wire.
  - b. Connect the CYUSBS234 DVK board to a PC using USB standard A to micro-B cable.
  - c. Set the PC into sleep mode. When the PC enters sleep mode, the USB host on the PC side suspends the connected CYUSBS234 DVK board.
  - d. By default, the Remote wake-up pin is active high. Disconnect the Remote wake-up pin (J23.6) from GND (J23.10) and touch TP10 (V3P3), as shown in [Figure 3-2](#). If the **Invert Polarity** option is selected, then connect the pin to GND to wake up the USB host from the Suspend state.
- Suspend: By checking this box, the Suspend option is enabled. When the USB bus enters the Suspend state, the suspend pin is asserted. By checking the **Invert Polarity** box, polarity of the Suspend pin can be inverted. J23.4 (GPIO header) on this board is a suspend pin.
- Power enable: The Power enable function is enabled by assigning a GPIO from the drop-down menu. When the USB-Serial bridge is configured by the host, this GPIO is asserted. In bus-powered embedded systems, to meet the USB 2.0 Specification requirements during Unconfigured and Suspend states, this pin can be used as a notification to control the power to the system. Refer to the *Configuration Utility User Guide* for more details about these options.

**Test Procedure for Suspend and Power Enable Pin.**

- a. Connect the CYUSBS234 DVK board to a PC using USB standard A to micro-B cable.
- b. Set the PC into sleep mode.
- c. Check the Suspend pin (J23.4) and Power Enable pin (selected GPIO which comes on external header J23) using a digital multimeter or digital storage oscilloscope. The Suspend pin goes low and Power enable pin goes high during sleep mode. (By default, the invert polarity is disabled. If the invert polarity is enabled, the Suspend pin goes high during sleep mode.)
- d. Wake up the PC using the Remote wake-up feature described in page 22, or using any other device such as a mouse or keyboard connected to the PC. When the PC becomes active, the Suspend pin goes high and power enable pin goes low.

**■ Manufacturer string**

Default value: Cypress Semiconductor

The Manufacturer string can be a value of up to 32 characters.

**■ Product string**

Default value: USB-Serial (Single Channel)

The Product string can be a value of up to 32 characters.

**■ Serial number string**

Default value: NULL (No serial number)

Select the check box to enter the serial number, which can be a value of up to 32 characters. If you do not require the serial number, deselect the check box.

**System**

The Configurable options are:

- a. VBUS voltage is 3.3 V
- b. VDDD voltage is less than 2 V
- c. Enable manufacturing interface
- d. I/O Level
- e. I/O Mode
- f. Program button
- g. Disconnect button

**■ VBUS voltage is 3.3 V**

Default value: Unchecked

This option must be checked if the VBUS pin is supplied with 3.3 V, and unchecked if the VBUS pin is supplied with 5 V. The board is designed only for 5-V VBUS operation. This option must always be unchecked for the board. The CY7C65211 device supports VBUS voltage range from 3.15 V to 5.25 V.

**■ VDDD voltage is less than 2 V**

Default value: Unchecked

The board is designed only for 5-V operation. This option must always be unchecked for the board. The CY7C65211 device supports VDDD voltage range from 1.71 V to 5.5 V.

**■ Enable manufacturing interface**

Default value: Checked

This option enables an additional vendor class manufacturing mode interface for reprogramming the device. For more information, refer to the Enable Manufacturing Interface section in the *Cypress USB-Serial Configuration Utility User Guide*.



- **I/O level**

Default value: CMOS

You can set the device's GPIO logic levels to either CMOS or LVTTL.

- **I/O Mode**

Default value: Fast

You can set the device's GPIO edge transitions to either fast or slow for EMI considerations. For more information, refer to the GPIO AC Specifications table in the datasheet.

- **Program button**

After configuring all the device settings, the updated configuration settings must be programmed to the device. To program the device, click the **Program** button.

- **Disconnect button**

Click this button to disconnect the DVK from the configuration utility.

4. After configuring the USB and system parameters, click the **Program** button to save the changed USB parameters. On successful programming, the "Program Succeeded" message appears. Click **OK** to continue.
5. Click the **Disconnect** button to disconnect the board from the configuration utility.
6. Press the reset switch **SW3** on the board. The controller is reinitialized with the new parameters and the board re-enumerates, as shown in [Figure 3-5 on page 18](#).

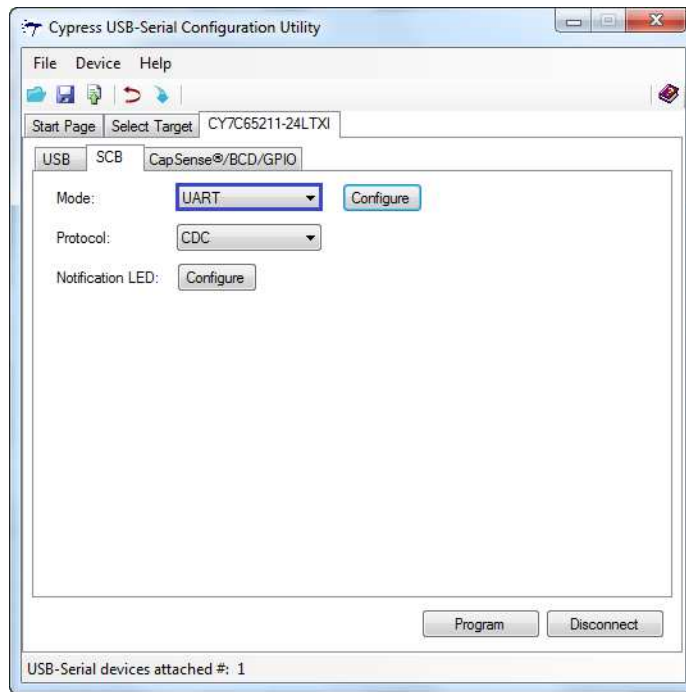
### 3.3.3 UART Configuration

The CYUSBS234 DVK board is configured for the UART interface by default. The board can act as a USB-UART bridge to transfer and receive data between the device and the PC via terminal communication software, such as Hyperterminal or Tera Term.

Follow these steps to view and modify the parameters for the UART configuration:

1. Follow steps 1 to 6 of the section [Connecting CYUSBS234 DVK to Cypress USB-Serial Configuration Utility on page 19](#) to connect the board to the Cypress USB-Serial Configuration Utility.
2. Click the **SCB** tab. Select **UART** as the SCB mode from the drop-down menu.

Figure 3-11. Configuration Utility **SCB** Configuration Tab



3. Click the **Configure** button, as shown in [Figure 3-11](#), to configure the UART parameters.

Figure 3-12. **UART** Configuration parameters

