



Chipsmall Limited consists of a professional team with an average of over 10 year of expertise in the distribution of electronic components. Based in Hongkong, we have already established firm and mutual-benefit business relationships with customers from,Europe,America and south Asia,supplying obsolete and hard-to-find components to meet their specific needs.

With the principle of “Quality Parts,Customers Priority,Honest Operation,and Considerate Service”,our business mainly focus on the distribution of electronic components. Line cards we deal with include Microchip,ALPS,ROHM,Xilinx,Pulse,ON,Everlight and Freescale. Main products comprise IC,Modules,Potentiometer,IC Socket,Relay,Connector.Our parts cover such applications as commercial,industrial, and automotives areas.

We are looking forward to setting up business relationship with you and hope to provide you with the best service and solution. Let us make a better world for our industry!



Contact us

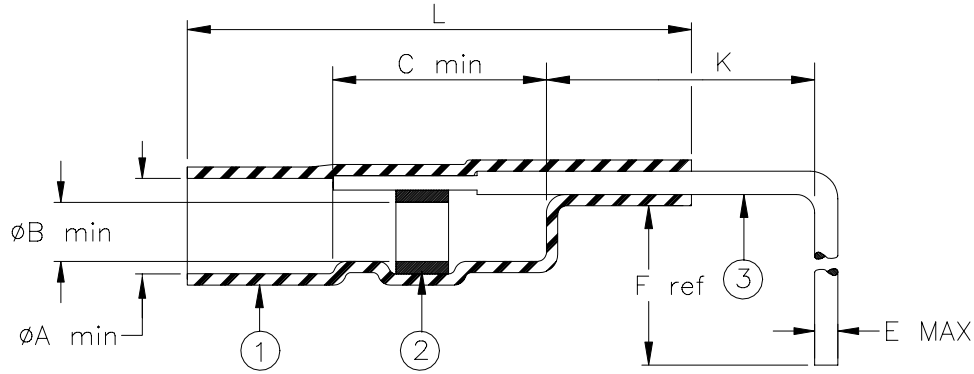
Tel: +86-755-8981 8866 Fax: +86-755-8427 6832

Email & Skype: info@chipsmall.com Web: www.chipsmall.com

Address: A1208, Overseas Decoration Building, #122 Zhenhua RD., Futian, Shenzhen, China



SPECIFICATION CONTROL DRAWING



Product Revision		Product Dimensions						
Product Name		$L \pm 1.5$ ($L \pm 0.06$)	ϕA min	ϕB min	C min	$K \pm 0.65$ ($K \pm 0.025$)	E max	F ref
D-141-0091	G	15.0 (0.600)	1.65 (0.065)	1.15 (0.045)	5.10 (0.200)	4.45 (0.175)	0.68 (0.027)	8.9 (0.350)

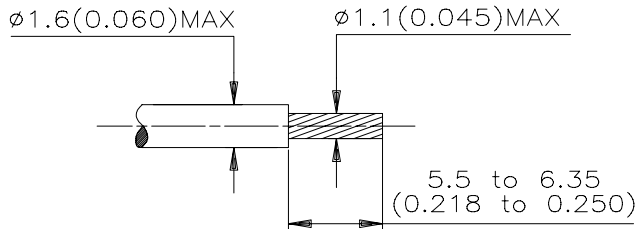
MATERIALS

- INSULATION SLEEVE: Heat-shrinkable, transparent blue, radiation cross-linked modified polyvinylidene fluoride.
- SOLDER PREFORM WITH FLUX:
 - SOLDER: TYPE Sn63 per ANSI-J-STD-006.
 - FLUX: TYPE ROL1 per ANSI-J-STD-004.
- PREINSTALLED LEAD: 22AWG 0.68 (.027) max dia., solder plated phosphor bronze.

APPLICATION

- This part is designed to attach a 28 to 22 gauge stranded wire to a printed circuit board. Hole dia.: .032.
- Temperature range: -55°C to +150°C. Parts may be installed by convection or infrared heating.

For best results, prepare the cable as shown:



* A trademark of Raychem Corporation.

Raychem		THERMOFIT DEVICES		Raychem Corporation 300 Constitution Drive Menlo Park, CA 94025 USA		TITLE: SOLDERSLEEVE* WITH PRE-INSTALLED LEAD	
UNLESS OTHERWISE SPECIFIED DIMENSIONS ARE IN MILLIMETERS. INCHES DIMENSIONS ARE BETWEEN BRACKETS.						DOCUMENT NO: D-141-0091	
TOLERANCES: 0.00 N/A 0.0 N/A 0 N/A		ANGLES: N/A		Raychem reserves the right to amend this drawing at any time. Users should evaluate the suitability of the product for their application.		DCR NUMBER: D990178	
		ROUGHNESS IN MICRON				REPLACES: D980911	
DRAWN BY: M. FORONDA		DATE: 03/22/99		PROD. REV. SEE TABLE		DOC ISSUE: 4	
				SCALE: None		SIZE: A	
						SHEET: 1 of 1	

If this document is printed it becomes uncontrolled. Check for the latest revision