



Chipsmall Limited consists of a professional team with an average of over 10 year of expertise in the distribution of electronic components. Based in Hongkong, we have already established firm and mutual-benefit business relationships with customers from,Europe,America and south Asia,supplying obsolete and hard-to-find components to meet their specific needs.

With the principle of “Quality Parts,Customers Priority,Honest Operation,and Considerate Service”,our business mainly focus on the distribution of electronic components. Line cards we deal with include Microchip,ALPS,ROHM,Xilinx,Pulse,ON,Everlight and Freescale. Main products comprise IC,Modules,Potentiometer,IC Socket,Relay,Connector.Our parts cover such applications as commercial,industrial, and automotives areas.

We are looking forward to setting up business relationship with you and hope to provide you with the best service and solution. Let us make a better world for our industry!



Contact us

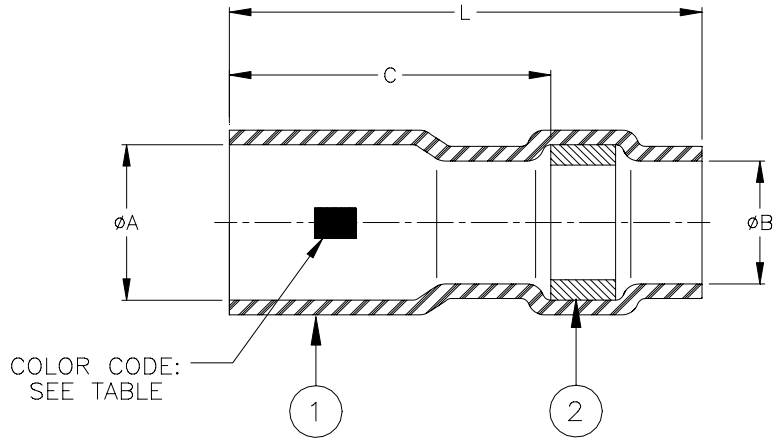
Tel: +86-755-8981 8866 Fax: +86-755-8427 6832

Email & Skype: info@chipsmall.com Web: www.chipsmall.com

Address: A1208, Overseas Decoration Building, #122 Zhenhua RD., Futian, Shenzhen, China



SPECIFICATION CONTROL DRAWING



Product Revision		Product Dimensions				Wire Accomodation*		Color Code
Product Name		L ± 0.50 (L ± 0.020)	C min	ϕA max	ϕB min	One Wire (AWG)	Two Wires (AWG)	
D-141-0211	D	5.10 (0.200)	2.30 (0.090)	1.90 (0.075)	0.89 (0.035)	26, 28, 30	30	Red
D-141-0212	D	5.10 (0.200)	2.30 (0.090)	2.10 (0.083)	1.07 (0.042)	22, 24	26, 28	Blue

* Variations in pin/wire geometry may require use of a different size sleeve in some instances. Consult Raychem for specific recommendations.

MATERIALS

1. INSULATION SLEEVE: Heat shrinkable, transparent blue, radiation cross-linked polyvinylidene fluoride.
2. SOLDER PREFORM WITH FLUX:
SOLDER: TYPE Sn63 per ANSI J-STD-006.
FLUX: TYPE ROL1 per ANSI J-STD-004.

APPLICATION

1. These parts are designed to attach wires having tin or silver plated stranded conductors to 0.60 (0.025) square wire wrapping posts.
*Wire Accomodation: See table.
2. Sleeve is to applied using the following Raychem tools:
AD-1549 Installation tool and the RH-3900 Resistance Heater
3. For installation instructions, see Raychem Procedure RCPS-200-32.

 307 Constitution Drive Menlo Park, CA 94025, USA		Wire and Harnessing Products		TITLE : SOLDERSLEEVE TERMINATOR FOR 0.60 x 0.60 (0.025 x 0.025) WIRE WRAPPING POSTS			
UNLESS OTHERWISE SPECIFIED DIMENSIONS ARE IN MILLIMETERS. INCHES DIMENSIONS ARE BETWEEN BRACKETS.				DOCUMENT NO.: D-141-0211/-0212			
TOLERANCES: 0.00 N/A 0.0 N/A 0 N/A	ANGLES: N/A ROUGHNESS IN MICRON	Tyco Electronics reserves the right to amend this drawing at any time. Users should evaluate the suitability of the product for their application.		DCR NUMBER: D010074		REPLACES: N/A	
DRAWN BY: M. FORONDA	DATE: 04-Apr.-01	PROD. REV. SEE TABLE	DOC ISSUE: 1	SCALE: None	SIZE: A	SHEET: 1 of 1	

If this document is printed it becomes uncontrolled. Check for the latest revision.